

Coeur CST High-Current Interconnect System

molex

Coeur CST High-Current Interconnect System delivers current ratings between 30.0 and 200.0A and offers a wide range of configurations, connecting PCBs, bus bars and cables

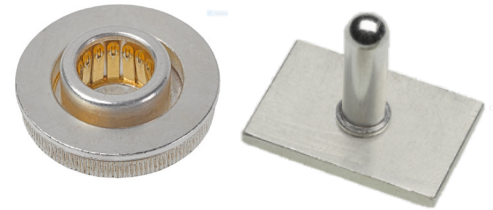
Features and Advantages

Capable of 30.0 to above 200.0A current rating

Offers a scalable design to meet a wide range of high-current applications

Termination methods include bus bars, PCBs and wire

Provides design flexibility for a range of high-current applications



Coeur CST High-Current 8.00mm Socket and Male Pin

Sockets without Float Feature

Series 204316

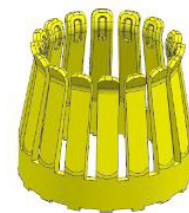


Series 204318



Coeur CST Socket Features

Multiple contact beams
Provide optimized electrical performance



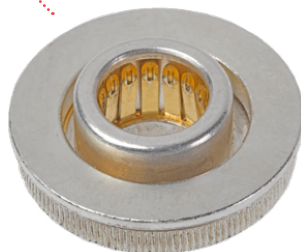
One common contact design in all CST sockets regardless of form factor sizes

Provides the same profile height even when the number of contacts varies

Press-Fit

Sockets with Float Feature

SMT



Series 204313



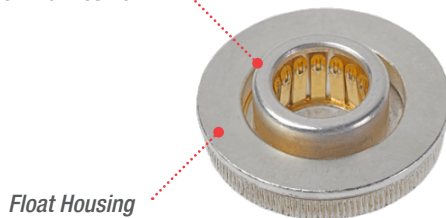
Series 204365

Unique Float Feature

8.00mm SMT Socket (Series 204313)

Core Socket with Contacts Fully Floated 1.00mm

Core Socket with Contacts in Nominal Position



8.00mm Press-Fit Socket

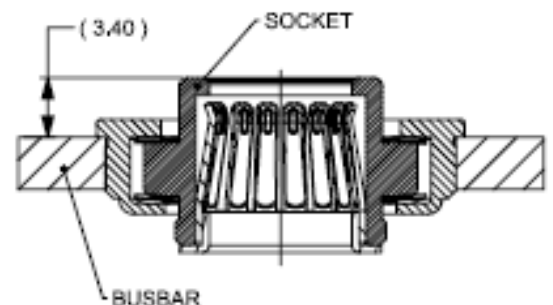
Float Housing

Wave springs provide float mechanism so entire core socket assembly moves within the float housing

No added stress on contacts in float position

Low mating forces

No risk of resistance increase due to high contact beam deflection



Coeur CST High-Current Interconnect System

molex



Terminal retention housings
Locks in contacts

1/0 AWG crimp contacts
For 8.0mm form factor
Makes smaller AWG possible

Fully shrouded female and male contacts
Touch safe. 600V rating in configuration show above



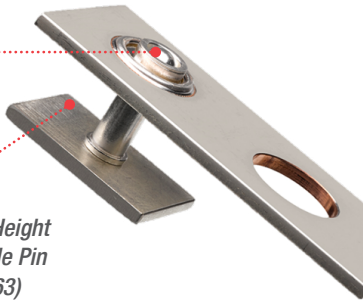
Premium housing features available

- Touch-safe feature
- Mate-first-last-break option
- Positive latching
- Panel-mount options available
- Vertical, right-angle, PCB, bus bar-mounting header options

2-circuit, 8.00mm version is currently available. Additional circuit sizes and configurations planned

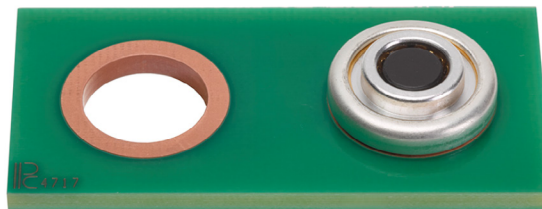
Plan is for a broad W-to-W/W-to-B product portfolio

Male pin does not protrude above the socket housing when mated by a top entry
Saves space above the PCB or bus bar



Board-to-Board Mated Height Changes by Varying Male Pin Length (Series 203263)

8.0mm Coeur CST Interconnector System, 2-Circuit, Wire-to-Board (Female Housing: Series 204601, 204603; Male Header: Series 204600; Male Pin: Series 203263)



Pick-and-place cap available

Enables automated SMT socket placement to PCB

Coeur CST Connector Embedded in a Bus Bar

Coeur CST Connector Mounted to a PCB

Applications

Telecommunications/Networking

- Servers
- Storage

Industrial

- Power Supply

Data Centers

- Servers
- Data Storage

PDU

- UPS/Battery Storage

Switches

- Circuit Breakers
- Instrumentation



Data Center Servers

Specifications

REFERENCE INFORMATION

Packaging: Partitioned Box/Bulk; Tape and Reel, Tray
Coming in Q4 2018
UL File No.: TBD
CSA File No.: 70184994
Use With: Triton Bus Bars
Designed In: Millimeters
RoHS: Yes
Halogen Free: Yes

ELECTRICAL

Voltage: 600V (2-Circuit W-to-B)
Current (max.): 200.0A
Contact Resistance: .20 milliohms

MECHANICAL

Contact Mating Force (max.): 40N
Contact Unmating Force (min.): 10N
Float Displacement Force (max.): 15N

PHYSICAL

Plastic Housing: 30% Glass-Filled PBT
Contact: High-Performance Copper Alloy
Metal Housings/Caps: Copper Alloy
Plating:
Contact Beams — Gold (Au) over Nickel (Ni)
Wave Springs (Float Versions) — Gold (Au) over Nickel (Ni)
Male Pin — Silver (Ag) over Nickel (Ni)
Metal Housings / Caps — Silver (Ag) over Nickel (Ni)
PCB Thickness (min.): 1.60mm
Bus Bar Thickness (min.): 1.50mm
Operating Temperature: -40 to +105°C

Coeur CST High-Current Interconnect System



Ordering Information

| Series No. | Component | Termination Method | Float Feature | Diameter (mm) |
|-----------------------------|-----------------------------------|--------------------|---------------|---------------|
| 204365-0010 | Female Socket | SMT | Yes | 8 |
| 204318-0001 | | | No | |
| 204313-0010 | | Press-Fit | Yes | |
| 204316-0001 | | | No | |
| 204608-0001 | Female Socket for 1/0 AWG | Crimp | No | |
| 203263-0001 | Male Pin | Press-Fit | N/A | |
| 204600-0001 | Male Header | Screw Attach | | |
| 204601-0001 | Female Housing | Crimp | | |
| 204603-0001 | Female Terminal Retention Housing | | | |

| Custom Product | Description |
|-------------------------------|------------------------------------|
| Contact Molex | Coeur CST Custom Pins and Housings |

www.molex.com/link/coeur.html

Molex is a registered trademark of Molex, LLC in the United States of America and may be registered in other countries; all other trademarks listed herein belong to their respective owners.