

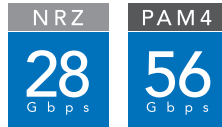


# GENERATE™ HIGH-SPEED EDGE CARD SYSTEM

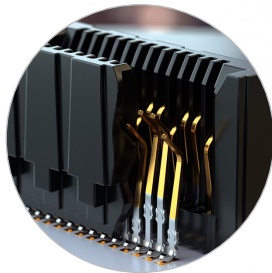
0.80 mm Pitch • Rugged Edge Rate® Contact System • Wide Variety of Designs

## HIGH-SPEED PERFORMANCE

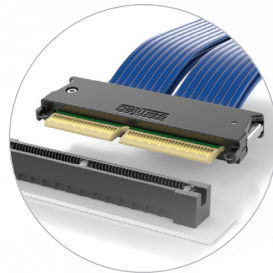
- High-Speed Edge Card Connectors (HSEC8 Series)
- Up to 200 Edge Rate® contacts on 0.80 mm pitch
- Mates with .062" (1.60 mm) and .093" (2.36 mm) thick cards
- 28 Gbps PAM4 performance; 56 Gbps PAM4 with HSEC8-DP Series
- Choice of orientations and designs support a variety of applications, including Differential Pair, Surface Mount, Right-Angle, Edge Mount, Pass-Through and Power/Signal Combos (see reverse for details)
- Mating twinax cable assembly (ECDP Series) available
- Optional weld tabs, board locks and cable latching



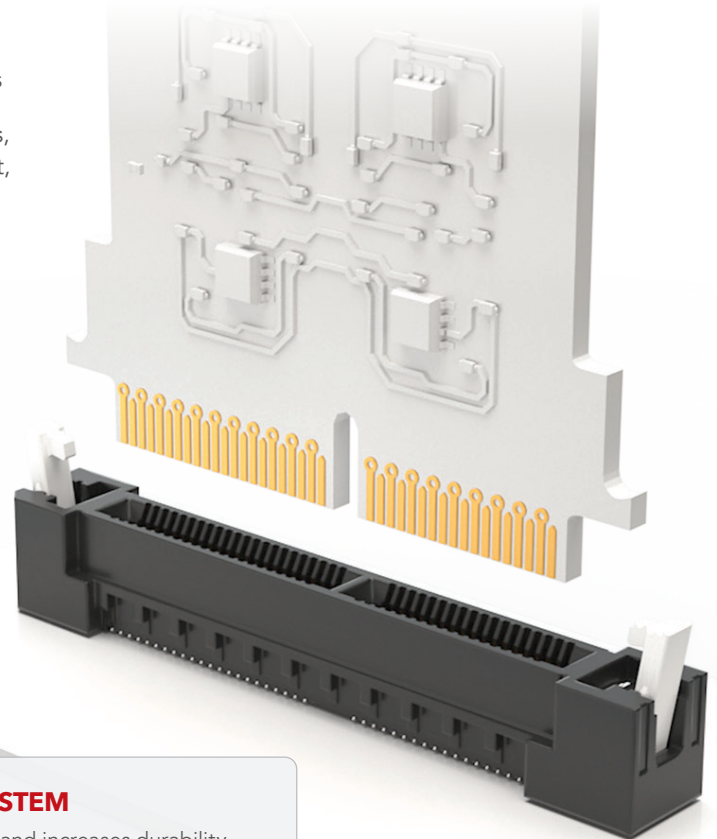
# GENERATE™



Precision Stamped  
Differential Pair Technology  
Enables Greater Speeds



Mating High-Speed Cable  
Assembly with 30 AWG  
Eye Speed® Twinax Cable



**EDGE  
RATE**  
CONTACT



## RUGGED EDGE RATE® CONTACT SYSTEM

- Smooth milled mating surface reduces wear and increases durability
- Lower insertion and withdrawal forces
- Robust when "zippered" during unmating
- Minimized parallel surface area reduces broadside coupling & crosstalk
- Designed, simulated and optimized for 50 Ω & 100 Ω systems

## SYSTEM

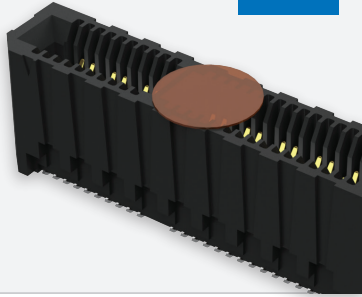
- HSEC8-DP - 0.80 mm Pitch Differential Pair, Vertical
- HSEC8-DV - 0.80 mm Pitch, Surface Mount, Vertical
- HSEC8-RA - 0.80 mm Pitch, Right-Angle
- HSEC8-EM - 0.80 mm Pitch, Edge Mount
- HSEC8-PE - 0.80 mm Pitch, Pass-Through
- HSEC8-PV - 0.80 mm Pitch, Power/Signal Combo

For more Edge Card solutions, please visit [samtec.com/edgecard](http://samtec.com/edgecard).

# GENERATE™ HSEC8 SERIES OPTIONS

## HSEC8-DP Series

- 0.80 mm Pitch Vertical
- Up to 56 Differential Pairs
- High Speed Performance to 56 Gbps PAM4
- Optional Weld Tabs
- PCI Express® 4.0 & 5.0 Capable



PAM4

56  
Gbps

## HSEC8-DV Series

- 0.80 mm Pitch Vertical, Surface Mount
- Single-Ended or Differential Pair
- Optional Board Locks, Weld Tabs, Cable Latching
- PCI Express® 3.0 & 4.0 Capable
- High-Speed Twinax Cable Mate: ECDP Series

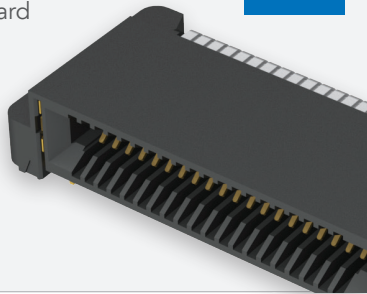


NRZ

28  
Gbps

## HSEC8-RA Series

- 0.80 mm Pitch Right-Angle
- Optional Solder Tabs, Board Locks, Cable Latching
- PCI Express® 3.0 & 4.0 Capable
- High-Speed Twinax Cable Mate: ECDP Series

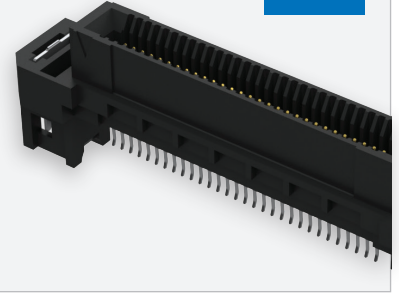


NRZ

28  
Gbps

## HSEC8-EM Series

- 0.80 mm Pitch Edge Mount
- Optional Solder Tabs
- PCI Express® 3.0 & 4.0 Capable
- High-Speed Twinax Cable Mate: ECDP Series

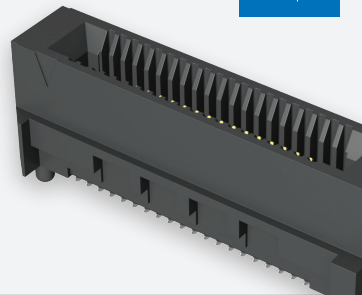


NRZ

28  
Gbps

## HSEC8-PE Series

- 0.80 mm Pitch Pass-Through
- Single-Ended or Differential Pair
- PCI Express® 3.0 & 4.0 Capable

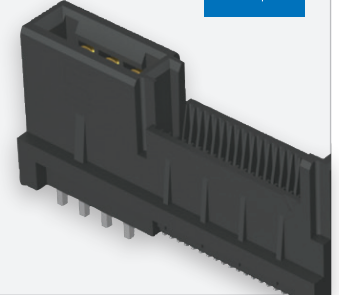


NRZ

28  
Gbps

## HSEC8-PV Series

- 0.80 mm Pitch Power / Signal Combo
- Single-Ended or Differential Pair with 2 or 4 Power Banks
- Optional Weld Tabs
- PCI Express® 3.0 & 4.0 Capable



NRZ

28  
Gbps

\* PCI Express® and the PCIe® design marks are registered trademarks and/or service marks of PCI-SIG.

\*\* Samtec **Extended Life Products™ (E.L.P.™)** have been tested to rigorous standards which evaluate contact resistance in simulated storage and field conditions.



For more information about Samtec's Full Line of Edge Card Solutions, please visit [samtec.com/edgecard](http://samtec.com/edgecard).