



Medical Power Supply

From The World's No.1 Power Supply Company

October 2018



www.DeltaPSU.com



Medical Power Supply

Product Introduction

Open Frame and Enclosed

MDS



- IT & Medical safety Approvals
- Over-Voltage/Load/Temperature & Short Circuit Protections
- Low leakage current (<0.1mA Normal & <0.3mA single fault)
- Compliant with IEC 60601-1-2 4th Ed. Requirements
- Power Good Signal, Remote Sense, Remote inhibit
- 2 x MOPP isolation

MDS



- Compliant with IEC 60601-1-2 4th Ed. requirements
- Suitable for type BF medical product
- IT & Medical safety Approvals
- Remote on/off control
- Power Good signal
- High MTBF > 500,000 hrs as per Telcordia SR-332

MEU



- Up to 600W convection cooled
- Full power from 90V to 264V, up to 50°C ambient
- Up to 500K hours MTBF
- 2 x MOPP isolation, Suitable for type BF medical products
- 5V/1A standby output and 12V/0.6A fan output for system
- IEC 60601-1-2 4th Edition Immunity Compliance
- PMBus Ver 1.3 supported

MEB



- Full power from 90Vac to 264Vac, up to 50°C ambient
- Up to 500K hours MTBF
- 2 x MOPP isolation, Suitable for type BF medical products
- Current sharing and 5V/2A standby output
- IEC 60601-1-2 4th Edition Immunity Compliance
- PMBus Ver 1.3 supported
- Intelligent fan speed control

MEP



- Safety Approvals to IEC 60601-1 3.1Ed. & IEC 60950-1
- Compliant with IEC 60601-1-2 4th Ed. Requirements
- Low touch current (<70uA Normal & 210uA single fault)
- Over-Voltage/Load/Temperature & Short Circuit protections
- 3 Million Hours MTBF
- 2 x MOPP (means of patient protection)

MEG



- Compact size and High Power Density
- 2 x MOPP isolation for Medical Application
- Output selectable from 2Vdc to 60Vdc
- Optional CV/CC Version on demand
- Normal and Reversed Option for Global Remote On/Off
- Analog and Digital Voltage Trimming
- PMBus Ver 1.3 Supported

ATX

MDS



- Universal AC input voltage range
- Safety Approvals for medical and IT applications
- Compliant with IEC 60601-1-2 4th Ed. Requirements
- Suitable for type BF patient access applications
- ATX 12V standard function & form factor
- Maximum output power of 350 watts
- Built-in active PFC

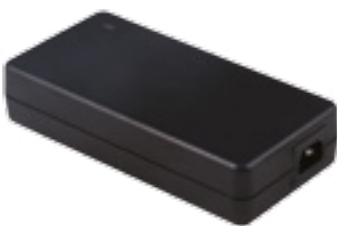
Adapter

MDS



- Over-Voltage/Load/Temperature & Short Circuit Protections
- Compliant with IEC 60601-1-2 4th Ed. Requirements
- Safety approvals for medical and IT applications
- 2 × MOPP isolation

MEA



- Universal AC input voltage range
- Safety Approvals for medical and IT applications
- High Efficiency meet DoE VI
- 2 × MOPP isolation
- High MTBF

MEF



- Safety Approvals for medical and IT applications
- Compliant with IEC 60601-1-2 4th Ed. Requirements
- Meets Limited Power Source (LPS) requirements
- IP22 ingress protection rating
- 2 × MOPP isolation
- 500K hours MTBF

Medical Power Supply

Product List

New products are frequently introduced. Please visit www.DeltaPSU.com for latest product updates.

Product Type	Series	Model Name	CC Code	Input Terminal	Output Voltage	Output Current	Output Power	Dimensions (L x W xH)
Enclosed Power Supply	MDS	MDS-200ADB12	AA	Molex 2-pin	12V	16.67A	200W	64.7 × 113.9 × 44.7 mm (2.5" × 4.5" × 1.8")
		MDS-250ADB12	AA	Molex 2-pin		20.84A	250W	88.9 × 140 × 44.4 mm (3.5" × 5.5" × 1.75")
		MDS-300ADB12	AA	Molex 2-pin		25.0A	300W	88.9 × 140 × 44.4 mm (3.5" × 5.5" × 1.75")
		MDS-400ADB12	AA	Molex 2-pin	33.33A	400W	88.9 × 140 × 44.4 mm (3.5" × 5.5" × 1.75")	
		MDS-300ADB18	AA	Molex 2-pin	18V	16.66A	300W	88.9 × 140 × 44.4 mm (3.5" × 5.5" × 1.75")
		MDS-200ADB24	A	Molex 2-pin	24V	8.33A	200W	64.7 × 113.9 × 44.7 mm (2.5" × 4.5" × 1.8")
		MDS-250ADB24	AA	Molex 2-pin		10.41A	250W	88.9 × 140 × 44.4 mm (3.5" × 5.5" × 1.75")
		MDS-300ADB24	AA	Molex 2-pin		12.5A	300W	88.9 × 140 × 44.4 mm (3.5" × 5.5" × 1.75")
		MDS-400ADB24	AA	Molex 2-pin		16.67A	400W	88.9 × 140 × 44.4 mm (3.5" × 5.5" × 1.75")
	MDS-300ADB48	AA	Molex 2-pin	48V	6.25A	300W	88.9 × 140 × 44.4 mm (3.5" × 5.5" × 1.75")	
MEB • Intelligent Fan Speed Control • PMBus Ver 1.3 Supported	MEB-1K2A24T	AAA	DINKLE 3-pin	24V	50.0A	1200W	127 × 204 × 40.5 mm (5.0" × 8.03" × 1.59")	
	MEB-1K2A48T	AAA	DINKLE 3-pin	48V	25.0A	1200W	127 × 204 × 40.5 mm (5.0" × 8.03" × 1.59")	
Open Frame Power Supply	MDS	MDS-040APS12 B	A	JST 2-pin	12V	3.33A	40W	50.8 × 76.2 × 23 mm (2.0" × 3.0" × 0.9")
		MDS-065APS12 B	A	JST 2-pin		5.42A	65W	50.8 × 101.6 × 30 mm (2.0" × 4.0" × 1.2")
		MDS-100APS12 B	A	JST 2-pin		8.33A	100W	76.2 × 127 × 31 mm (3.0" × 5.0" × 1.2")
		MDS-100BPS12 B	A	JST 2-pin		8.33A	100W	50.8 × 101.6 × 31.8 mm (2.0" × 4.0" × 1.25")
		MDS-200APB12*	AA	Molex 2-pin		16.67A	200W	50.8 × 101.6 × 35.6 mm (2.0" × 4.0" × 1.4")
		MDS-250APB12*	AA	Molex 2-pin		20.84A	250W	76.2 × 127 × 36.1 mm (3.0" × 5.0" × 1.4")
		MDS-300APB12*	AA	Molex 2-pin		25.0A	300W	76.2 × 127 × 35.6 mm (3.0" × 5.0" × 1.4")
		MDS-400APB12*	AA	Molex 2-pin		33.33A	400W	76.2 × 127 × 35.6 mm (3.0" × 5.0" × 1.4")

*Product with options for enclosed or U-Frame

Model Numbering

MDS –	XXX	□	□	□	□	□□	
Delta Medical Power Supply MDS-200A series MDS-250A series MDS-300A series MDS-400A series	Max power wattage in the product series. May be lower at some voltages. 200 - 200W 250 - 250W	Family Code A	Product Type D - Enclosed P - Open Frame	Input Type Class II 2-pin connector: A, C, E, G... Class I 3-pin connector: B, D, F, H...	Output Voltage 12 - 12V 24 - 24V	CC Code For DC connector, label, etc. A - DC connector type ¹⁾	
ME	B –	XXX	□	□□	□	□□□	
Delta Medical Power Supply	B - Enclosed	Max power wattage in the product series. May be lower at some voltages. 1K2 - 1,200W	Family Code A	Output Voltage 24 - 24V	Inlet Type T - Terminal	CC Code	
MDS –	XXX	□	□	□	□	□	
Delta Medical Power Supply MDS-040APS series MDS-065APS series MDS-100APS series MDS-100BPS series MDS-400AUS series	Max power wattage in the product series. May be lower at some voltages. 040 - 40W 065 - 65W	Family Code A - Family A B - Family B	Product Type P - Open Frame U - U Frame	Input Type Code S - Single Output	Output Voltage 12 - 12V 24 - 24V	Input Configuration B - Class I 3-pin connector A - Class II 2-pin connector	CC Code For DC connector, label, etc. A - DC connector ¹⁾

1) Refer to technical datasheet or product catalog

Product Type	Series	Model Name	CC Code	Input Terminal	Output Voltage	Output Current	Output Power	Dimensions (L x W xH)		
Open Frame Power Supply	MDS	MDS-040APS15 B	A	JST 2-pin	15V	2.67A	40W	50.8 × 76.2 × 23 mm	(2.0" × 3.0" × 0.9")	
		MDS-065APS15 B	A	JST 2-pin		4.2A	65W	50.8 × 101.6 × 30 mm	(2.0" × 4.0" × 1.2")	
		MDS-100APS15 B	A	JST 2-pin		6.67A	100W	76.2 × 127 × 31 mm	(3.0" × 5.0" × 1.2")	
		MDS-100BPS15 B	A	JST 2-pin		6.7A	100W	50.8 × 101.6 × 31.8 mm	(2.0" × 4.0" × 1.25")	
		MDS-040APS18 B	A	JST 2-pin	18V	2.22A	40W	50.8 × 76.2 × 23 mm	(2.0" × 3.0" × 0.9")	
		MDS-065APS18 B	A	JST 2-pin		3.61A	65W	50.8 × 101.6 × 30 mm	(2.0" × 4.0" × 1.2")	
		MDS-100APS18 B	A	JST 2-pin		5.55A	100W	76.2 × 127 × 31 mm	(3.0" × 5.0" × 1.2")	
		MDS-100BPS18 B	A	JST 2-pin		5.5A	100W	50.8 × 101.6 × 31.8 mm	(2.0" × 4.0" × 1.25")	
		MDS-300APB18*	AA	Molex 2-pin	16.66A	300W	76.2 × 127 × 35.6 mm	(3.0" × 5.0" × 1.4")		
		MDS-400AUS19 B	A	DECA 3-pin	19V	21.1A	400W	97 × 198 × 41.50 mm	(3.8" × 7.8" × 1.6")	
		MDS-400AUS24 B	A	DECA 3-pin	24V	16.67A	400W	97 × 198 × 41.50 mm	(3.8" × 7.8" × 1.6")	
		MDS-040APS24 B	A	JST 2-pin	24V	1.67A	40W	50.8 × 76.2 × 23 mm	(2.0" × 3.0" × 0.9")	
		MDS-065APS24 B	A	JST 2-pin		2.71A	65W	50.8 × 101.6 × 30 mm	(2.0" × 4.0" × 1.2")	
		MDS-100APS24 B	A	JST 2-pin		4.17A	100W	76.2 × 127 × 31 mm	(3.0" × 5.0" × 1.2")	
		MDS-100BPS24 B	A	JST 2-pin		4.2A	100W	50.8 × 101.6 × 31.8 mm	(2.0" × 4.0" × 1.25")	
		MDS-200APB24*	AA	Molex 2-pin		8.33A	200W	50.8 × 101.6 × 35.6 mm	(2.0" × 4.0" × 1.4")	
		MDS-250APB24*	AA	Molex 2-pin		10.41A	250W	76.2 × 127 × 36.1 mm	(3.0" × 5.0" × 1.4")	
		MDS-300APB24*	AA	Molex 2-pin		12.5A	300W	76.2 × 127 × 35.6 mm	(3.0" × 5.0" × 1.4")	
		MDS-400APB24*	AA	Molex 2-pin		16.66A	400W	76.2 × 127 × 35.6 mm	(3.0" × 5.0" × 1.4")	
		MDS-300APB48*	AA	Molex 2-pin		48V	6.25A	300W	76.2 × 127 × 35.6 mm	(3.0" × 5.0" × 1.4")
	MDS-100AP401 B	A	Molex 2-pin	5.1V/12V/ -15V/15V		8A/3A/ 0.8A/0.8A	100W	76.2 × 127 × 30.5 mm	(3.0" × 5.0" × 1.2")	
	MEP	<ul style="list-style-type: none"> High MTBF Low touch current 	MEP-25A15J	BNA	JWT 2-pin	15V	1.67A	25W	50.8 × 76.2 × 23 mm	(2.0" × 3.0" × 0.9")
	MEU	<ul style="list-style-type: none"> PMBus Ver 1.3 Supported 	MEU-260A12T	AAA	DECA 3-pin	12V	21.66A	260W	198 × 97 × 41.5 mm	(7.8" × 3.8" × 1.6")
			MEU-600C24T	AAA	DINKLE 3-pin	24V	25.0A	600W	127 × 203.2 × 40 mm	(5.0" × 8.0" × 1.57")
			MEU-600D24T	AAA	DINKLE 3-pin		25.0A	600W	127 × 203.2 × 40 mm	(5.0" × 8.0" × 1.57")
			MEU-600C48T	AAA	DINKLE 3-pin	48V	12.5A	600W	127 × 203.2 × 40 mm	(5.0" × 8.0" × 1.57")
			MEU-600D48T	AAA	DINKLE 3-pin		12.5A	600W	127 × 203.2 × 40 mm	(5.0" × 8.0" × 1.57")

*Product with options for enclosed or U-Frame

Model Numbering

MDS –	XXX	□	□	□	□	□	□
Delta Medical Power Supply MDS-100AP401	Max power wattage in the product series. May be lower at some voltages. 100 - 100W	Family Code A	Product Type P - Open Frame	Output Voltage 401 - 5.1V, 12V, -15V, 15V	Input Configuration B - Class I with PE connection	CC Code For DC connector, label, etc. A - DC connector ¹⁾	
ME	P –	XX	□	□	□	□□□	
Delta Medical Power Supply	P - Open Frame	Max power wattage in the product series. May be lower at some voltages. 25 - 25W	Family Code A	Output Voltage 15 - 15V	Input Connector J - Harness	CC Code	
ME	U –	XXX	□	□	□	□□□	
Delta Medical Power Supply	U - U Frame	Max power wattage in the product series. May be lower at some voltages. 260 - 260W 600 - 600W	Family Code A - Family A C - Family C D - Family D	Output Voltage 12 - 12V 24 - 24V 48 - 48V	Inlet Type T - Terminal	CC Code	

1) Refer to technical datasheet or product catalog

Product Type	Series	Model Name	Output Slots	Output Voltage	Output Power	Dimensions (L x W xH)
Configurable Power Supply	MEG • PMBus Ver 1.3 Supported • IT & Medical safety approvals	MEG-1K2A4	4 Slots	Single Output: 2V-60V	1,200W	254 x 88.9 x 40.5 mm (10" x 3.5" x 1.59")
		MEG-2K1A6	6 Slots		2,100W	254 x 127 x 40.5 mm (10" x 5" x 1.59")

Product Type	Series	Model Name	CC Code	AC Inlet	Output Voltage	Output Current	Output Power	Dimensions (L x W xH)
ATX Power Supply	MDS	MDS-350AD701	AA	C14	+3.3V, +5V, +5V _{SB} , +12V ₁ , +12V ₂ , -12V, -5V	8A, 9A, 1.25A, 8A, 8A, 0.25A, 0.1A	350W	100 x 194 x 40.5 mm (3.9" x 7.6" x 1.6")

Product Type	Series	Model Name	CC Code	AC Inlet	Output Voltage	Output Current	Output Power	Dimensions (L x W xH)
Adapter	MDS	MDS-005AAS05 A	R	Wall mount-China type	5V	1.00A	5W	39.5 x 56.5 x 28 mm (1.6" x 2.2" x 1.1")
		MDS-005AAS05 B	R	Wall mount-Japan, USA type		1.00A	5W	39.5 x 56.5 x 28 mm (1.6" x 2.2" x 1.1")
		MDS-005AAS05 C	R	Wall mount-EU type		1.00A	5W	39.5 x 56.5 x 28 mm (1.6" x 2.2" x 1.1")
		MDS-030AAC05*		Duck Head		3.00A	15W	53.5 x 88 x 27.5 mm (2.1" x 3.5" x 1.1")
		MDS-005AAS06 A	R	Wall mount-China type	6V	0.83A	5W	39.5 x 55.8 x 28 mm (1.6" x 2.2" x 1.1")
		MDS-005AAS06 B	R	Wall mount-Japan, USA type		0.83A	5W	39.5 x 55.8 x 28 mm (1.6" x 2.2" x 1.1")
		MDS-005AAS06 C	R	Wall mount-EU type		0.83A	5W	39.5 x 55.8 x 28 mm (1.6" x 2.2" x 1.1")
		MDS-030AAC07*		Duck Head		3.00A	21W	53.5 x 88 x 27.5 mm (2.1" x 3.5" x 1.1")
		MDS-030AAC12*		Duck Head		2.00A	24W	53.5 x 88 x 27.5 mm (2.1" x 3.5" x 1.1")
		MDS-060AAS12 B	A	C14	12V	5.00A	60W	62 x 135 x 34.1 mm (2.4" x 5.3" x 1.3")
		MDS-060BAS12 A	B	C8		5.00A	60W	62 x 135 x 34.1 mm (2.4" x 5.3" x 1.3")
		MDS-080AAS12 A		C8		6.66A	80W	75 x 150 x 40 mm (3.0" x 5.9" x 1.6")
		MDS-150AAS12 B	A	C14		10.00A	120W	85 x 170 x 40 mm (3.4" x 6.7" x 1.6")

*Please refer to technical datasheet to get detailed information

Model Numbering

ME	G –	XXX	A	□
Delta Medical Power Supply	G - Configurable	Max power wattage in the product series. May be lower at some voltages. 1K2 - 1,200W 2K1 - 2,100W	Family Code A	Slot Number 4 - 4 Slots 6 - 6 Slots

MDS –	XXX	□	□	□	□□
Delta Medical Power Supply MDS-350AD701	Max power wattage in the product series. May be lower at some voltages. 350 - 350W	Family Code A	Product Type D - Enclosed	Output Voltage 701 - +3.3V, +5V, +5V _{SB} , +12V ₁ , +12V ₂ , -12V, -5V	CC Code

MDS –	XXX	□	□	□	□	□	□□
Delta Medical Power Supply MDS-005AAS series MDS-060AAS series MDS-060BAS series MDS-080AAS series MDS-090AAS series MDS-090BAS series MDS-150AAS series	Max power wattage in the product series. May be lower at some voltages. 005 - 5W 060 - 60W	Family Code A - Family A B - Family B	Product Type A - Adapter	# of Output S - Single Output	Output Voltage 12 - 12V 24 - 24V	Input Configuration A - C8 B - C14 C - NA A - CN B - US C - EU for 005AAS	CC Code For DC plug, cable length, label, etc.

Product Type	Series	Model Name	CC Code	AC Inlet	Output Voltage	Output Current	Output Power	Dimensions (L x W xH)	
Adapter	MDS	MDS-030AAC15*		Duck Head	15V	2.00A	30W	39.5 × 56.5 × 28 mm	(2.1" × 3.5" × 1.1")
		MDS-060AAS15 B	A	C14		4.00A	60W	62 × 135 × 34.1 mm	(2.4" × 5.3" × 1.3")
		MDS-090AAS15 B	A	C14		6.00A	90W	60 × 150 × 35 mm	(2.4" × 5.9" × 1.4")
		MDS-060AAS19 B	A	C14	19V	3.20A	60W	62 × 135 × 34.1 mm	(2.4" × 5.3" × 1.3")
		MDS-060BAS19 A	A	C8		3.15A	60W	62 × 135 × 34.1 mm	(2.4" × 5.3" × 1.3")
		MDS-090AAS19 B	A	C14		4.74A	90W	60 × 150 × 35 mm	(2.4" × 5.9" × 1.4")
		MDS-150AAS19 B	A	C14		7.89A	150W	86.3 × 170.1 × 40.6 mm	(3.4" × 6.7" × 1.6")
		MDS-150CAB19	AA	C6	7.90A	150W	60 × 150 × 35 mm	(2.6" × 5.9" × 1.3")	
		MDS-030AAC24*		Duck Head	24V	1.25A	30W	39.5 × 56.5 × 28 mm	(2.1" × 3.5" × 1.1")
		MDS-060AAS24 B	A	C14		2.50A	60W	62 × 135 × 34.1 mm	(2.4" × 5.3" × 1.3")
		MDS-060BAS24 A	A	C8		2.50A	60W	62 × 135 × 34.1 mm	(2.4" × 5.3" × 1.3")
		MDS-090AAS24 B	A	C14		3.75A	90W	60 × 150 × 35 mm	(2.4" × 5.9" × 1.4")
		MDS-090BAS24 A	B	C8		3.75A	90W	75 × 150 × 40 mm	(3.0" × 5.9" × 1.6")
	MDS-150AAS24 B	A	C14	6.25A	150W	86.3 × 170.1 × 40.6 mm	(3.4" × 6.7" × 1.6")		
	MEA • Efficiency Level VI • 2 × MOPP isolation	MEA-120A15B	G-A	C8	15V	8.0A	120W	167.6 × 83.8 × 38.1 mm	(6.6" × 3.3" × 1.5")
		MEA-250A24C	H-A	C14	24V	10.42A	250W	200 × 100 × 43 mm	(7.8" × 3.9" × 1.7")
	MEF • IP22 ingress protection rating • 2 × MOPP isolation	MEF-010A05B	J-A	Wall mount-US type	5V	2.0A	5W	43 × 70 × 27.5 mm	(1.7" × 2.8" × 1.1")

*Please refer to technical datasheet to get detailed information

Model Numbering

MDS –	XXX	AAC	□	□	□	□
Delta Medical Power Supply MDS-030 series	Max power wattage in the product series. May be lower at some voltages. 030 - 30W	Family Code	Output Voltage (Single Output) 05 - 5V 07 - 7V 12 - 12V 15 - 15V ¹⁾ 24 - 24V	CC Code DC plug type and output cable length A - 2.1 × 5.5 × 10 mm DC plug, and 1200 mm cable length B - 2.1 × 5.5 × 12 mm DC plug, and 1200 mm cable length ²⁾	CC Code Country Duck Head Type A - China B - United States ²⁾ C - European ²⁾ D - United Kingdom ²⁾ E - Australia ²⁾	G - Korea ²⁾ H - India ²⁾ J - Argentina ²⁾ K - Brazil ²⁾ M - South Africa ²⁾

MDS –	XXX	□	□	□	□□	□□
Delta Medical Power Supply MDS-150CAB19A	Max power wattage in the product series. May be lower at some voltages. 150 - 150W	Family Code C	Product Type A: Adapter	Input Connector Type A, C, E, G - Class II C8/C18 B, D, F, H - Class I C6/C14	Output Voltage 19 - 19V	CC Code AA-ZX Power cord length, plug, label, etc.

1) MDS-030AAC15 BB is not available

2) Options

ME	A –	XXX	□	□□	□	□□
Delta Medical Power Supply	A - Desktop Adapter	Max power wattage in the product series. May be lower at some voltages. 120 - 120W 250 - 250W	Family Code A	Output Voltage 15 - 15V 24 - 24V	Input Connector Type B - Class II C8 C - Class I C14	CC Code For DC plug, cable length, label, etc.

ME	F –	XXX	□	□□	B	□□
Delta Medical Power Supply	F - Fixed	Max power wattage in the product series. May be lower at some voltages. 010 - 10W	Family Code A	Output Voltage 05 - 5V	Country Duck Head Type B - United States (2-pin)	CC Code For DC plug, cable length, label, etc.



To learn more about medical power supply, please visit our website.





ASIA

Delta Electronics, Inc.

3 Tungyuan Road, Chungli Industrial Zone,
Taoyuan County 32063, Taiwan, R.O.C

Tel: +886 3 452 6107
Fax: +886 3 434 3617

Delta Electronics (Shanghai) Co., Ltd. Headquarters

No. 182 Minyu Road, Pudong,
Shanghai, P.R.C. 201209

Tel: +86 21 68723988
Fax: +86 21 68723996

Delta Electronics (Shanghai) Co., Ltd. Beijing Branch

No. 7 Building, 6th Courtyard, Beichen East Rd.,
Chaoyang Dist., Beijing, P.R.C. 100105

Tel: +86 10 82253225
Fax: +86 10 82251360

Delta Electronics (Thailand) PCL.

909 Soi 9, Moo 4, Bangpoo Industrial Estate
(E.P.Z.), Pattana 1 Rd., T. Phrakasa, A. Muang,
Samutprakarn 10280, Thailand

Tel: +662 709 2800
Fax: +662 709 2827

Delta India Electronics Pvt. Ltd.

Plot No. 43, Sector - 35, HSIIDC,
Gurgaon, Haryana 122001

Tel: +91 124 4874900
+91 124 4169040
Fax: +91 124 4874945

Delta Electronics (Japan), Inc.

2-1-14 Shibadaimon, Minato-Ku,
Tokyo, 105-0012, Japan

Tel: +81 3 5733 1155
Fax: +81 3 5733 1255

Delta Electronics (Korea), Inc.

1511, Byucksan Digital Valley 6-Cha,
Gasam-dong, Geumcheon-gu,
Seoul, 153-704, Korea

Tel: +82 2 515 5303
+82 2 515 5305
Fax: +82 2 515 5302

NORTH AMERICA

Delta Products Corporation North American Headquarters

46101 Fremont Blvd.
Fremont, CA 94538, U.S.A.
Tel: +1 510 668 5100

CENTRAL AND SOUTH AMERICA

Delta Greentech (Brasil) S.A.

Rua Itapeva, 26 - 3º, andar Edifício Itapeva,
One - Bela Vista 01332-000 - São Paulo - SP -
Brasil

Tel: +55 11 3568 3850
Fax: +55 11 3568 3865

Delta Electronics International Mexico, S.A. de C.V.

Via Dr. Gustavo Baz No. 2160,
Fracc. Ind. La Loma, Tlalnepantla de Baz,
Estado de México, 54060, Mexico
Tel: +52 55 2628 3015

EUROPE

Delta Electronics (Netherlands) B.V. EMEA Headquarters

Zandsteen 15
2132 MZ Hoofddorp, The Netherlands
Tel: +31 20 655 0975
Fax: +31 20 655 0999

De Witbogt 20

5652 AG Eindhoven, The Netherlands
Tel: +31 40 800 3878
Fax: +31 40 800 3898

Authorized Distributor:

www.DeltaPSU.com | info@deltapsu.com

October 2018 - All information and specifications are subjected to change without prior notice.