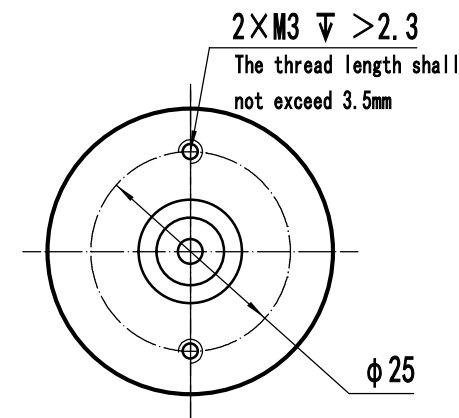
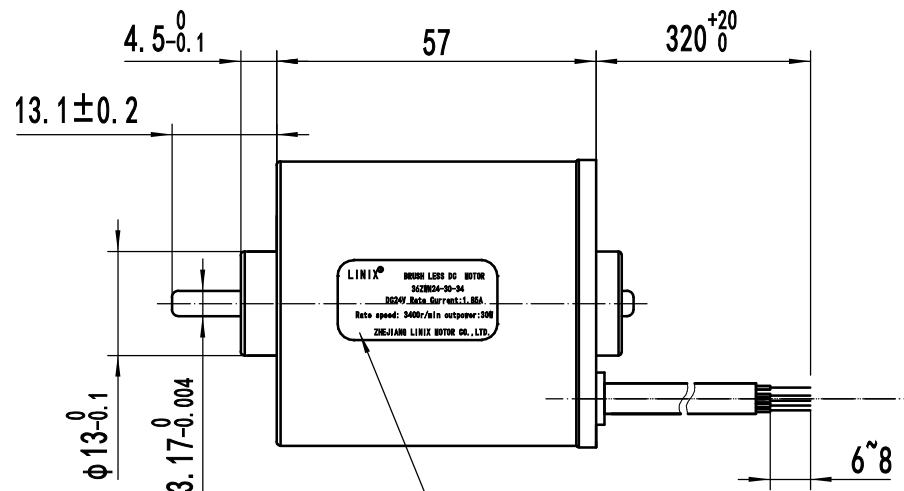
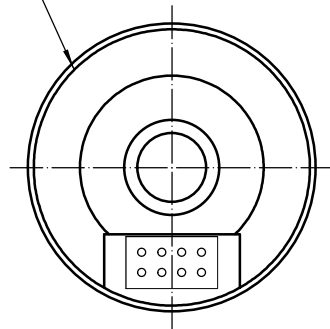


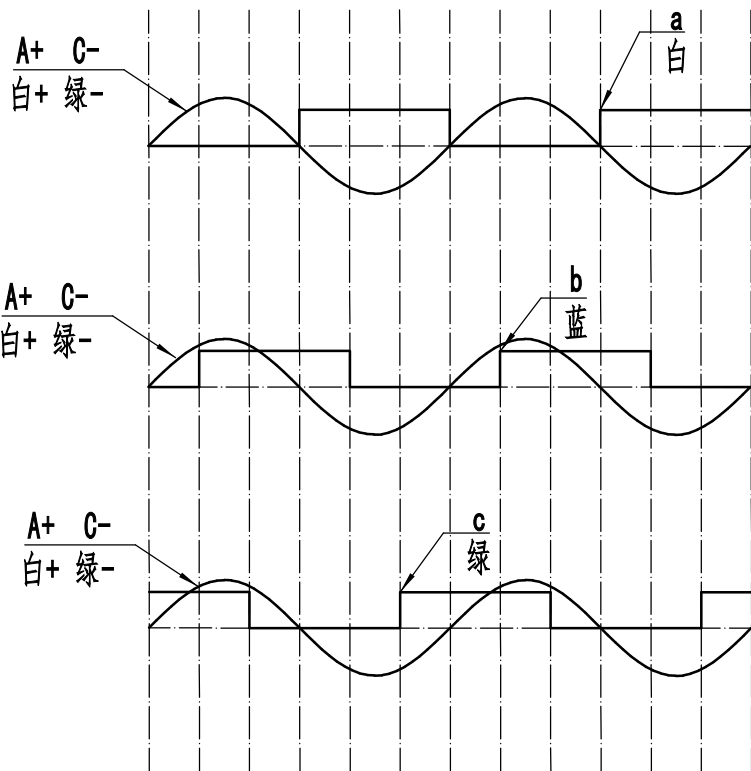
标记	更改文件号	更改日期	姓名	月、日
○				
○				
○				

锚点×8



Nameplate position

When the shaft end of the motor rotates counterclockwise, the signal is as follows:



序号	COLOUR	信号 (SIGNAL)
1	白 (WHITE)	HS1
2	蓝 (BLUE)	HS2
3	绿 (GREEN)	HS3
4	红 (RED)	+VC
5	黑 (BLACK)	GND
6	白 (粗) WHITE (thick)	A
7	蓝 (粗) BLUE (thick)	B
8	绿 (粗) GERRN (thick)	C

Notes:

Rated Voltage: 24VDC

No Load Speed: 4700±15%

Rated Speed: 3400±10%

I Rated: 1.85±10%A

Rated Torque: 0.082 N.m

未注公差	尺寸分段	0.5-3	>3-6	>6-30	>30-120	>120-400	>400-1000
线性尺寸	±0.1	±0.1	±0.2	±0.3	±0.5	±0.8	
角度尺寸	±0.2	±0.3	±1	±2	±2	±2	
尺寸分段	0.5-10	>10-50	>50-120	>120-400	>400		
极限偏差	±1°	±30'	±20'	±10'	±5'		
设计			标准化				
审核							
工艺			批准				

浙江联宜电机有限公司

36ZWN24-30-34

外形图

阶段 标记 数量 比例

1 1.5:1

共 1 张 第 1 张

0Linix.300.F772

借(通)用件登记

版本号 220915

年 月 日启用

MOTOR PARAMETERS

Manufacturer: [Zhejiang LINIX Motor Co., Ltd](#)

Model Number: 36ZWN24-30-34

Parameter	Value	Unit
Number of Poles (P)	4	
Stator Resistance (R_s)	2.641	Ω line to line
Stator Inductance (L_s)	2.785	mH line to line
Stator d-axis Inductance (L_d)	2.170	mH line to line
Stator q-axis Inductance (L_q)	3.400	mH line to line
Back-EMF Constant (K_e)	3.445	V _{rms} /kRPM (line to line)
Viscous damping factor (B)	2.645 x 10 ⁻⁶	N-m/(rad/s)
Static friction torque (T_f)	2.194 x 10 ⁻³	N-m
Rotor inertia (J)	1.479 x 10 ⁻⁶	N-m/(rad/s ²)
Ambient Temperature during measurement	24	°C

Note:

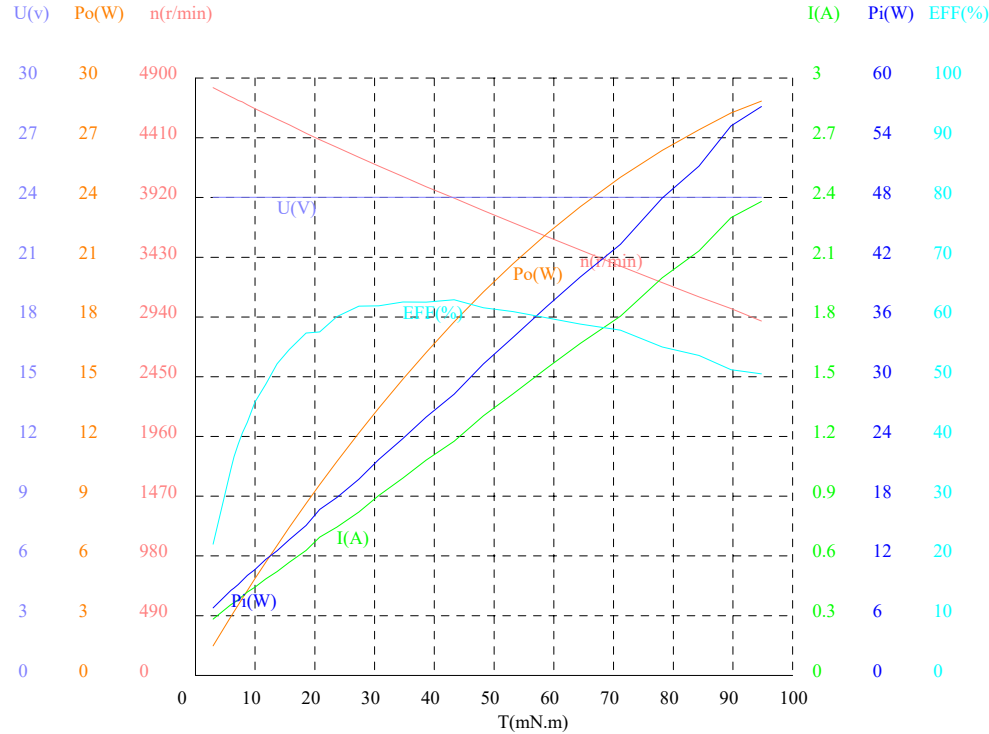
Motor Parameters are measured using [motorBench® Development Suite](#) (GUI-based software development tool) from Microchip Technology Inc.

Test Report

Sample Name: BLDC. MOTOR
 Sample Model: 36ZWN24-30-34
 Room Temp: 20.7°C - 20.9°C
 Report No.: M21110790B2

Manufacturer: LINIX
 Other:
 Tester: 磁滞测功机HD-5KB/F
 Test Voltage: 24V

Sample No.: M21110790
 Direction: 顺时针 (CW)
 Tester: QE008
 Auditor: QE018



NO.	n(r/min)	T(mN.m)	Po(W)	U(V)	I(A)	Pi(W)	EFF
1	4821.6	2.9507	1.4898	24.008	0.2826	6.7835	21.96%
2	4746.6	5.9639	2.9642	24.007	0.3564	8.5568	34.64%
3	4733.7	6.4791	3.2115	24.006	0.3653	8.7696	36.62%
4	4716.4	7.1660	3.5390	24.007	0.3808	9.1416	38.71%
5	4704.7	7.8685	3.8764	24.007	0.3978	9.5505	40.59%
6	4680.4	8.6960	4.2619	24.007	0.4187	10.053	42.40%
7	4648.7	9.9762	4.8561	24.006	0.4425	10.622	45.72%
8	4606.9	11.772	5.6786	24.007	0.4852	11.649	48.75%
9	4562.6	13.676	6.5340	24.007	0.5219	12.529	52.15%
10	4516.1	15.721	7.4345	24.006	0.5679	13.632	54.54%
11	4447.1	18.547	8.6369	24.007	0.6277	15.069	57.32%
12	4394.6	20.827	9.5837	24.007	0.6943	16.668	57.50%
13	4330.8	23.699	10.747	24.007	0.7451	17.887	60.08%
14	4249.7	27.368	12.179	24.007	0.8206	19.701	61.82%
15	4177.8	30.678	13.421	24.006	0.9036	21.693	61.87%
16	4091.3	34.722	14.875	24.007	0.9912	23.796	62.51%
17	4008.3	38.640	16.218	24.008	1.0810	25.953	62.49%
18	3914.2	43.324	17.757	24.007	1.1761	28.234	62.89%
19	3812.9	48.226	19.255	24.007	1.3033	31.288	61.54%
20	3713.7	53.175	20.678	24.007	1.4141	33.949	60.91%
21	3600.7	58.827	22.180	24.008	1.5433	37.051	59.86%
22	3489.9	64.416	23.540	24.006	1.6671	40.021	58.82%
23	3358.1	71.145	25.017	24.006	1.8037	43.300	57.78%
24	3222.2	78.139	26.364	24.007	1.9966	47.932	55.00%
25	3104.6	84.290	27.402	24.008	2.1312	51.166	53.56%
26	3009.3	89.645	28.248	24.007	2.2992	55.196	51.18%
27	2906.5	94.766	28.842	24.007	2.3801	57.140	50.48%

Feature	n(r/min)	T(mN.m)	Po(W)	U(V)	I(A)	Pi(W)	EFF
No-Load	4821.6	2.9507	1.4898	24.008	0.2826	6.7835	21.96%
Max-EFF	3914.2	43.324	17.757	24.007	1.1761	28.234	62.89%
Max-Po	2906.5	94.766	28.842	24.007	2.3801	57.140	50.48%
Max-T	2906.5	94.766	28.842	24.007	2.3801	57.140	50.48%
Locked							
Rating1	3148.4	82.000	27.033	24.008	2.0811	49.962	54.11%
Rating2							
Rating3							
Rating4							
Rating5							

PS. 20211125163118