

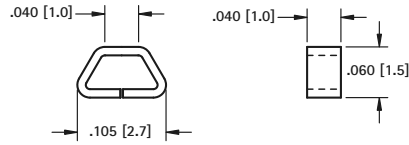
# (SMT) SURFACE MOUNT TEST POINTS ON TAPE & REEL

AVAILABLE ON TAPE AND REEL

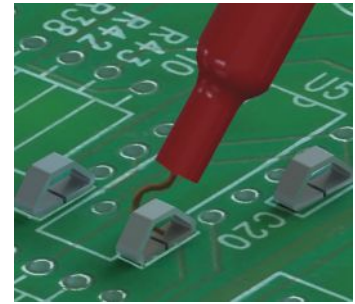
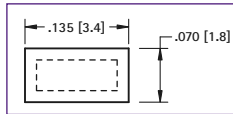
- Manufactured using flat wire to provide a large mounting surface area
- Efficient, safe, board level testing
- Simplifies testing on dense circuit boards
- Compatible with vacuum and mechanical pick & place assembly systems
- All conductive polystyrene carrier tape meets ANSA/EIA-481 standards

- Ideal for use with miniature probes, clips and hooks
- Ultra low profile, ideal for advanced surface mount PCB applications

## MICRO MINIATURE



Pad Layout



### SPECIFICATIONS

#### Material:

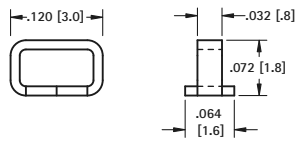
.010 (.25) Phosphor Bronze, Silver Plate

**CAT. NO. 5015** - 1000 pieces per reel    **CAT. NO. 5017** - 5000 pieces per reel

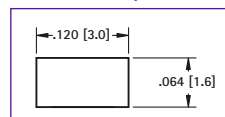
**Tape & Reel Spec's:** 8mm Wide, 4mm Pitch

- Ideal for use with most standard probes, clips and hooks
- Unique design provides exceptional strength and durability

## MINIATURE



Pad Layout



### SPECIFICATIONS

#### Material:

.015 (.38) Phosphor Bronze, Silver Plate

**CAT. NO. 5019** - 1000 pieces per reel    **CAT. NO. 5029** - 5000 pieces per reel

**Tape & Reel Spec's:** 12mm Wide, 4mm Pitch

- Ideal for use with most standard probes, clips and hooks
- Color keyed for visibility and quick identification

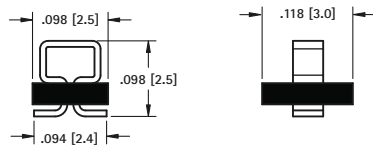
## COLOR KEYED

### MATERIAL

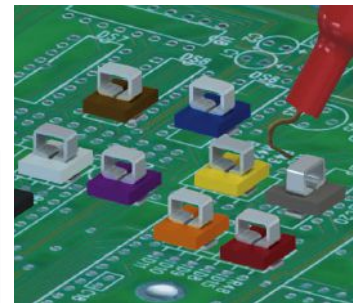
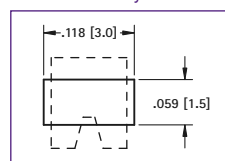
**Terminal:** .008 (.20) Phosphor Bronze, Silver Plate

**Base:** LCP UL Rated 94V-0

| CAT. NO. | Base Color | CAT. NO. | Base Color |
|----------|------------|----------|------------|
| 5190TR   | RED        | 5195TR   | BROWN      |
| 5191TR   | BLACK      | 5196TR   | GREEN      |
| 5192TR   | WHITE      | 5197TR   | BLUE       |
| 5193TR   | ORANGE     | 5198TR   | GREY       |
| 5194TR   | YELLOW     | 5199TR   | PURPLE     |



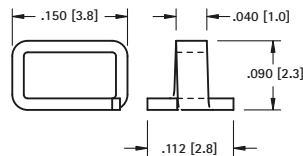
Pad Layout



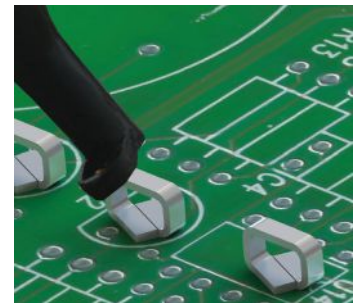
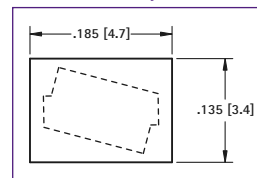
**Tape & Reel Spec's:** 12mm Wide, 4mm Pitch, 1,000 pieces per 7" reel

- Ideal for use with standard probes, clips and hooks
- Unique design provides exceptional strength and durability

## COMPACT



Pad Layout



### SPECIFICATIONS

#### Material:

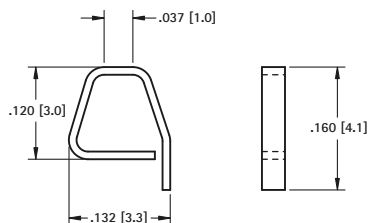
.015 (.38) Phosphor Bronze, Silver Plate

**CAT. NO. 5016** - 1000 pieces per reel    **CAT. NO. 5018** - 5000 pieces per reel

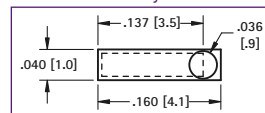
**Tape & Reel Spec's:** 12mm Wide, 4mm Pitch

- Locating Pin provides positive location during assembly process
- Increased solder strength
- Can be used as a SMT test point or when used with a .032 [.81] board, as a THM test point

## HYBRID MOUNT



Pad Layout



### SPECIFICATIONS

#### Material:

.010 (.25) Phosphor Bronze, Silver Plate

**CAT. NO. 5027** - 800 pieces per reel

**Tape & Reel Spec's:** 12mm Wide, 4mm Pitch