

# Assembly instructions for the HybridPACK™ Drive

## About this document

### About this document

This application note describes the recommended process for mounting the HybridPACK™ Drive power module. The document is applicable to HybridPACK™ Drive power module products, listed in the [Chapter 1.1](#).

### Scope and purpose

The HybridPACK™ Drive module has new assembly guiding elements which simplify positioning and alignment during the mounting process. In order to ensure a robust design meeting the high quality demands of the automotive industry, it is also important to use the right mounting order and to use appropriate printed circuit boards (PCB) material, screw types, sealing rings, etc.. The application note gives further hints and alternative screw types for high volume production.

### Intended audience

Engineers and operators involved in the assembly of the HybridPACK™ Drive power module into power electronics systems.

## Table of contents

---

### Table of contents

	<b>About this document</b> .....	1
	<b>Table of contents</b> .....	2
<b>1</b>	<b>General Information</b> .....	4
1.1	HybridPACK™ Drive product list in scope of this application note .....	5
<b>2</b>	<b>Recommended Mounting Order</b> .....	6
<b>3</b>	<b>PressFit Assembly</b> .....	7
3.1	Requirements for the PCB .....	7
3.2	General hints for the PCB Footprint .....	10
3.3	Press-In Tools .....	11
3.4	Press-In Process .....	13
3.4.1	PCB alignment before the press-in process .....	13
3.4.2	Press-in process description .....	14
3.4.3	Typical press-in example with dF stop criteria .....	17
3.4.4	Alternative: Press-In Process with distance keeper .....	17
<b>4</b>	<b>Soldering Modules (alternative to PressFIT)</b> .....	19
4.1	Requirements for the PCB for soldering .....	19
4.2	Solder Tools .....	19
4.3	Solder Process .....	20
4.4	Typical solder process example .....	21
<b>5</b>	<b>PCB Design hint for high thermal cycle system robustness</b> .....	23
5.1	PCB stiffness/spring force characterization .....	23
5.2	PCB slots for spring force reduction .....	24
5.2.1	Typical PCB Footprint with slots .....	25
5.3	PCB design for module external mounting .....	26
<b>6</b>	<b>Power Module Cooling System</b> .....	28
6.1	Reference Cooler Design .....	28
6.2	Recommendation for the sealing ring .....	32
6.3	Cooling fluid .....	34
<b>7</b>	<b>Screw types and processes</b> .....	36
7.1	Baseplate Mounting Screws .....	36
7.1.1	Alternative: self-tapping screws for baseplate mounting .....	36
7.2	Fixation/clamping of the module during the baseplate screw process .....	38
7.3	PCB mounting screws on the module housing .....	39
7.4	Screw Orders (Baseplate and PCB) .....	40
<b>8</b>	<b>Connecting to the Power Terminals</b> .....	42
8.1	Mounting Options .....	42
8.1.1	Additional Information for Welding Processes .....	43

---

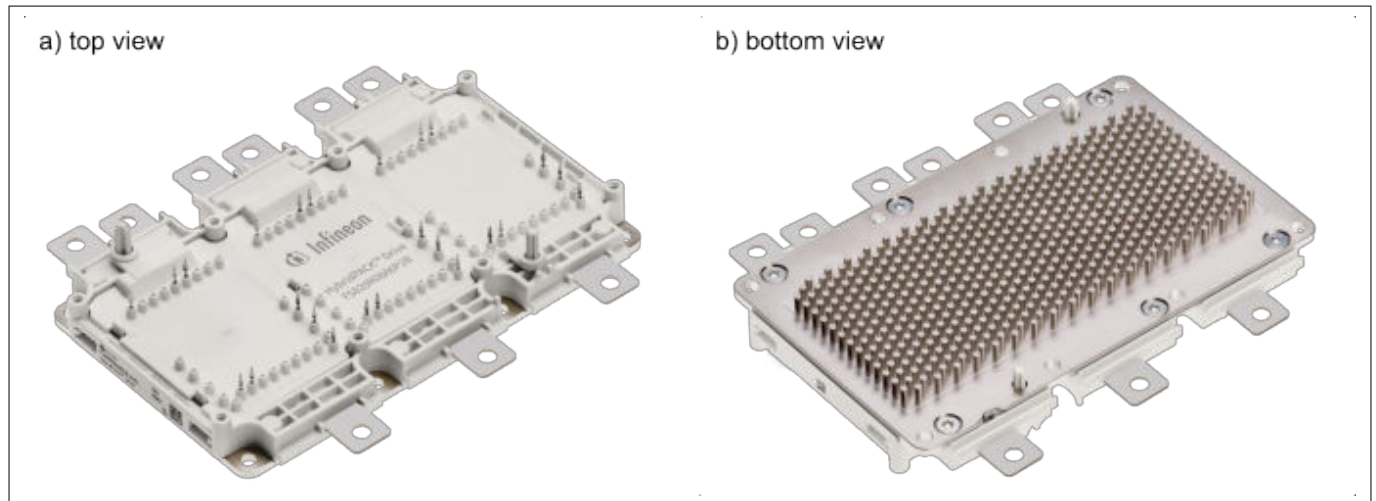
## Table of contents

8.2	Forces on Power Tabs .....	44
<b>9</b>	<b>System Assembly Clearance &amp; Creepage Distances .....</b>	<b>45</b>
<b>10</b>	<b>Phase Current Sensor Integration .....</b>	<b>46</b>
<b>11</b>	<b>Traceability, Data Matrix and Part Markings .....</b>	<b>47</b>
<b>12</b>	<b>Technical Drawing .....</b>	<b>48</b>
12.1	Basic Explanation Coordinate System .....	48
12.2	Pin Position and Pin Gauge .....	49
<b>13</b>	<b>Storage and Transport .....</b>	<b>51</b>
<b>14</b>	<b>Power Module Appearance .....</b>	<b>52</b>
14.1	Pin Rotation .....	52
14.2	Module Lid to PCB Distance .....	52
14.3	Power Tab Tin Plating .....	53
14.4	Baseplate Surface .....	53
<b>15</b>	<b>References .....</b>	<b>54</b>
	<b>Revision history .....</b>	<b>55</b>
	<b>Disclaimer .....</b>	<b>57</b>

## 1 General Information

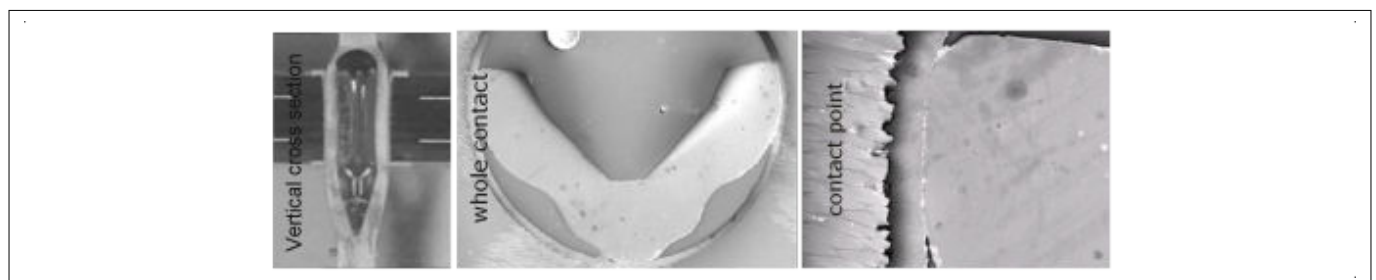
### 1 General Information

The HybridPACK™ Drive power module family is designed to meet the high volume production, high robustness, high power density, and low cost requirements of the automotive market. Different product derivate with for example different power tab sizes and different baseplates are available within the HybridPACK™ Drive product family. The application note can be applied to HybridPACK™ Drive Modules listed in the [Chapter 1.1](#).



**Figure 1 HybridPACK™ Drive Power Module (example shows FS820R08A6P2B typical appearance)**

The automotive industry recognizes pressfit pins as one of the most reliable contact technologies. The HybridPACK™ Drive is equipped with pressfit signal pins connecting the power module to the printed circuit board (PCB). The pressfit pin design has been proven in the EasyPACK/EasyPIM™ power modules, which were successfully introduced in the market in 2006 for industrial applications and in 2011 for automotive applications. It should be noted that the pressfit contact is a cold welding connection type and forms a gas tight contact. This ensures a high quality contact which is not sensitive to oxidation/corrosion or to vibration. A further benefit of the pin is that under unexpected high push forces, the pin can move and release mechanical stress without losing electrical contact. It will form a gas tight cold welding connection again, in contrast to most other technologies such as solder pins or spring contacts. Since no preconditioning or heating is needed for the assembly of the PCB to the power module, the processes at the customer assembly line are much faster.

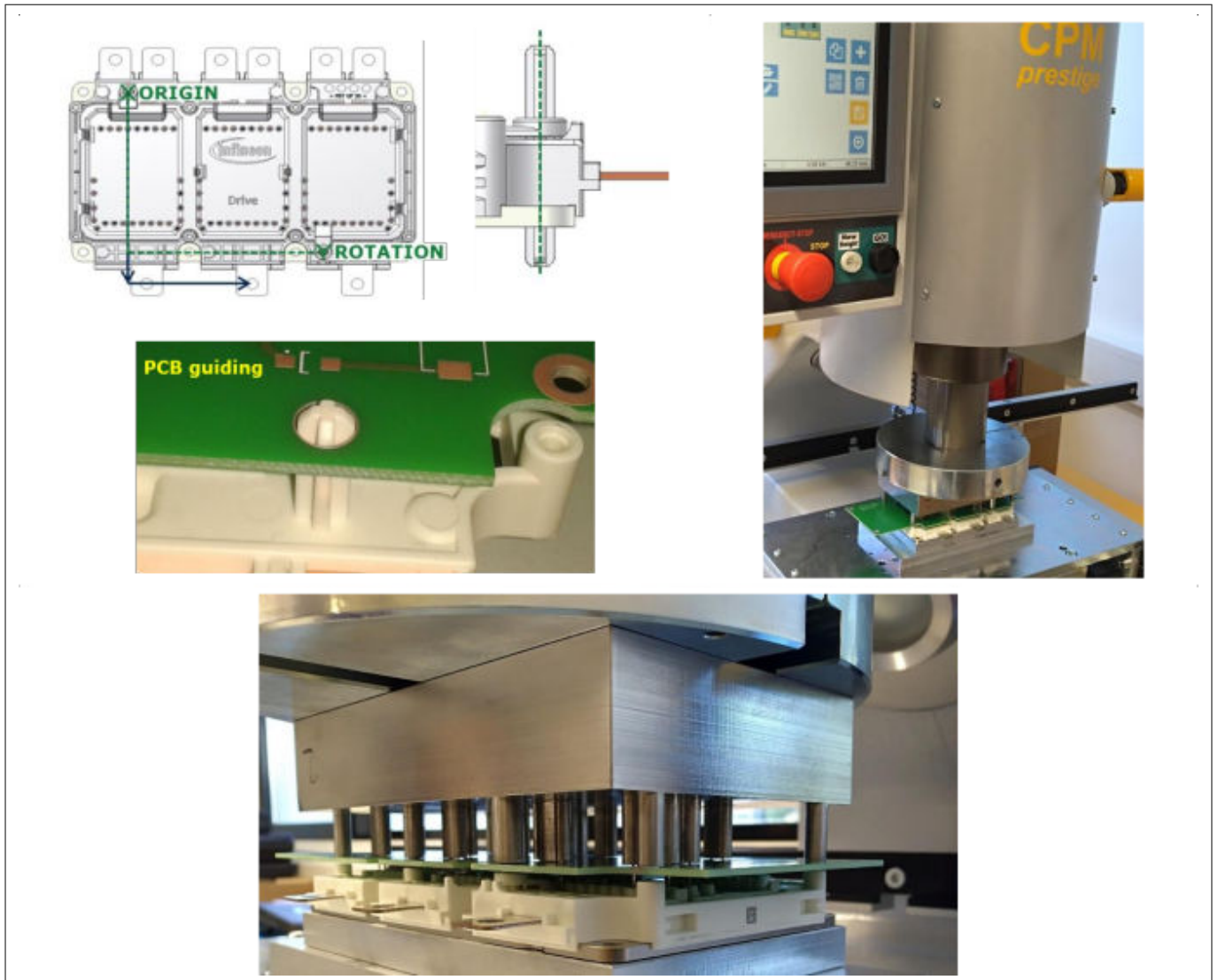


**Figure 2 Cross sections of the signal pressfit pin in the PCB**

The power tabs of the HybridPACK™ Drive are available in several options. The tabs with holes are well suited for screw type connections (and for self-clinching nuts). The tabs without holes can be used for welding techniques, which saves also process time and cost in the assembly lines at high volume production.

The X-Pin & Poka Yoke concept of the HybridPACK™ Drive enables very customer friendly drawings and support simple mounting processes. All drawings of the power module are using the upper left plastic dome as origin and the other dome defines the rotation of the 2D coordinate system. Furthermore, the X-Pin is supporting the pre-alignment of the power module during the assembly process and avoids wrong assembly orientations and positions due to the poka yoke mechanism.

## 1 General Information



**Figure 3** X-Pin & Poka Yoke in the HybridPACK™ Drive power module enables simple mounting processes

### 1.1 HybridPACK™ Drive product list in scope of this application note

The scope of the application note is for the following products:

Type Designation	SP order number	Status
FS660R08A6P2FB	SP001632426	in production
FS660R08A6P2FLB	SP001850450	in production
FS770R08A6P2B	SP001706976	in production
FS770R08A6P2LB	SP001987412	in production
FS820R08A6P2B	SP001499708	in production
FS820R08A6P2LB	SP001611366	in production
FS820R08A6P2	SP001499702	in production

*Product not listed? Please ask your Infineon sales representative.*

---

## 2 Recommended Mounting Order

### 2 Recommended Mounting Order

All datasheet drawings specify the power module at the state of delivery. Deformations on the product can occur when the power module is mounted to a cooling system (i.e. depending on cooler flatness and screw torque). As the pin position tolerance is important for PCB assembly, it is recommended to press the PCB on the power module first, and assemble the power module into the cooling system next. In order to avoid putting unnecessary mechanical stress on the PCB, it should be fixed by screws on the power module subsequent to mounting the power module to the cooling system.

As a summary, the following mounting order can be recommended:

1. Align PCB to the power module (the X-Pins will support this process)
2. Press-in PCB (recommended is controlled way-force press-in process)
3. Prepare cooling system with the sealing ring
4. Attach power module with PCB to the prepared cooling system
5. Fix module baseplate on the cooler by screws
6. Fix the PCB on the power module by screws
7. Connect the module power tabs to busbar, capacitor, etc

When self-clinching nuts are chosen for the connecting type of the module power tabs it is recommended to press-in these nuts in the assembly line before the PCB mounting step 1 starts.

## 3 PressFit Assembly

### 3 PressFit Assembly

#### 3.1 Requirements for the PCB

The pressfit technology used in the HybridPACK™ Drive is designed based on IEC 60352-5 for standard FR4 printed circuit boards with immersion tin plating. The PCB material must be compliant with IEC 60249-2-4 or IEC 60249-2-5 for double-sided printed circuit boards and IEC 60249-2-11 or IEC 60249-2-12 for multilayer printed circuit boards.

The requirements for the PCB are in [Table 1](#). In case the requirements are not met, there is risk of a not gas tight signal pin connection or of pin and/or PCB via damage. The recommendations for the PCB for the X-pin holes are in [Table 2](#).

Please note that the pressfit hole specifications are only valid for assembled PCBs. In case of unassembled PCBs, for example for testing purposes, it is recommended to perform a standard reflow solder process before starting the power module assembly process.

**Table 1 Requirements to the PCB**

No	Description	Unit	Min.	Typ.	Max.	Remarks and known common mistakes
1	Drill tool diameter	mm	1.12	1.15		Wrong drill tool applied. Specify clearly the pressfit hole positions and required drill tool size to the PCB manufacturer
2	Copper thickness in hole	μm	25		50	In case the via metallization is lower than specification, the risk is a damaged/cracked via
3	End hole diameter	mm	1.02		1.10	End hole diameters lower than spec may lead to increased press-in forces (typically >115 N per pin) and may damage the pins. Larger holes than spec may lead to low press-in forces (typically < 40 N per pin) and can cause not gas tight connections
4	Copper thickness of conductors	μm	35	70 105	400	No results available for thinner or thicker copper layers
5	Hole to hole pattern tolerance	μm			±100	In typical PCB manufacturing hole to hole pattern is lower than ± 80 μm
6	Recommended PCB thickness	mm		1.6		Target value with +/- 10% thickness tolerance
7	Recommended maximum PCB spring force in characterization (see <a href="#">Chapter 5</a> )	N/mm			450	For high thermal cycle system robustness it is recommended to limit PCB stiffness (i.e. spring force). See <a href="#">Chapter 5</a> for more information

**(table continues...)**

## 3 PressFit Assembly

**Table 1 (continued) Requirements to the PCB**

No	Description	Unit	Min.	Typ.	Max.	Remarks and known common mistakes
8	Metallization of circuit board		Immersion Tin (Sn chemically)			Immersion tin has typ 1-5 μm metallization in the hole. Other metallization type should be avoided can lead to strong deviation in press-in forces. For example HAL leadless show high variations in press-in forces and risk is a not gas tight pin connection, which can fail over application lifetime. PCB with ENIG plating can lead to increased press forces due to hard surface and this PCB type was not tested at Infineon module qualification tests
9	Metallization of pin		Ni/Sn (galvanic)			The Sn plated pin with nickel under layer avoids potential whisker growth out of the upper galvanic tin layer

**Table 2 Recommendations for the printed circuit board X-pin holes**

No	Description	Unit	Min.	Typ.	Max.	Remark
1	End hole diameter X-Pin <sup>1)</sup>	mm	5.82	5.90		The hole should be drilled with 6.0 mm drill tool and not milled in order to avoid additional unnecessary hole position tolerances
2	End hole diameter Y-Pin <sup>1)</sup>	mm	4.82	4.90		The hole should be drilled with 5.0 mm drill tool and not milled in order to avoid additional unnecessary hole position tolerances
3	Hole to hole pattern tolerance	μm			± 100	Plated holes are preferred in order to achieve a minimum “X-pin hole” to “pressfit hole” pattern tolerance

1) Experience has shown that PCB hole diameter should be significantly larger than the module frame element for a seamless assembly process. The given relative large hole diameters in the PCB is the best compromise between Module and PCB alignment and the necessary play during this assembly step. The specified relative large hole sizes avoid an unnecessary rotation of the PCB with respect to the signal pin coordinate system.

Please take note that the PCB pressfit holes should not be specified just by the finished end hole diameter. The risk is that wrong processes are applied by the PCB manufacturer. Please give your PCB manufacturer the information that all holes for the signal pins must be manufactured according to [Table 1](#). As PCB design tools typically do not differentiate between “normal” and “pressfit holes” it is a well-known workaround to use a “unique hole size for example 1.06 mm” in the PCB design for all pressfit holes. Then the pressfit holes are separate in the NC drill files and so the PCB manufacturer knows exactly the positions where to apply the spec according to [Table 1](#). An example for such a workaround is shown in [Figure 4](#).



## 3 PressFit Assembly

Experience has shown that it is best practice to place additionally a text on the drill drawing layer, where it is clearly specified that the 1.06 mm holes are the pressfit holes according to the specification of [Table 1](#). This text is also visible in the gerber files which are the typical exchange format between the PCB designer and the manufacturer. [Figure 19](#) show an example of such a recommended footprint.

NCDrill File Report						
-----						
Layer Pair : Top Layer to Bottom Layer						
Tool	Hole Size	Hole Type	Hole Count	Plated	Tool Travel	
-----						
T1	1.1mm (39.37mil)	Round	24		543.04 mm (21.38 Inch)	
<b>T2</b>	<b>1.06mm (42.13mil)</b>	<b>Round</b>	<b>24</b>		<b>428.69</b>	<b>mm (16.88 Inch)</b>
<b>SEE PRESSFIT SPEC!</b>						
T3	3.6mm (141.732mil)	Round	8		459.55 mm (18.09 Inch)	
T4	4mm (157.48mil)	Round	4		635.11 mm (25.00 Inch)	
T5	4.9mm (192.913mil)	Round	1		0.00 mm (0.00 Inch)	
T6	5.9mm (232.283mil)	Round	1		0.00 mm (0.00 Inch)	
T7	10mm (393.701mil)	Round	8	NPTH	447.98 mm (17.64 Inch)	
-----						

**Figure 4 Example NC Drill File (tool header only) of a PCB design where all pressfit holes are specified with 1.06 mm and a note to the manufacturer is added. The PCB manufacturer can now easily distinguish between a normal and a pressfit hole (see tool T2)**

A structure of a PCB according to the spec in [Table 1](#) is illustrated in [Figure 5](#). The hole in the PCB is drilled with a drill tool size of 1.15 mm. It is normal that PCB material shrinks after drilling. Therefore, this shown hole size with 1.15 mm should not be understood as a check gauge after drilling rather than an illustration for understanding the PCB stack.

Later in the process, the holes will be plated. It is important to have minimum 25 µm copper in the hole otherwise the press forces may damage/crack the via. According to experience, larger annular rings are typically more robust to mechanical forces and so large annular rings (for example 0.5 mm) should be used wherever possible in the design.

The metallization/plating in the holes has to be manufactured in an immersion tin (that is chemical tin) process. This process is known to generate very uniform layer thicknesses (typically about 1 µm) and ensures the correct press-in forces as well as an appropriate contact surface for achieving gas tight pressfit connections.

3 PressFit Assembly

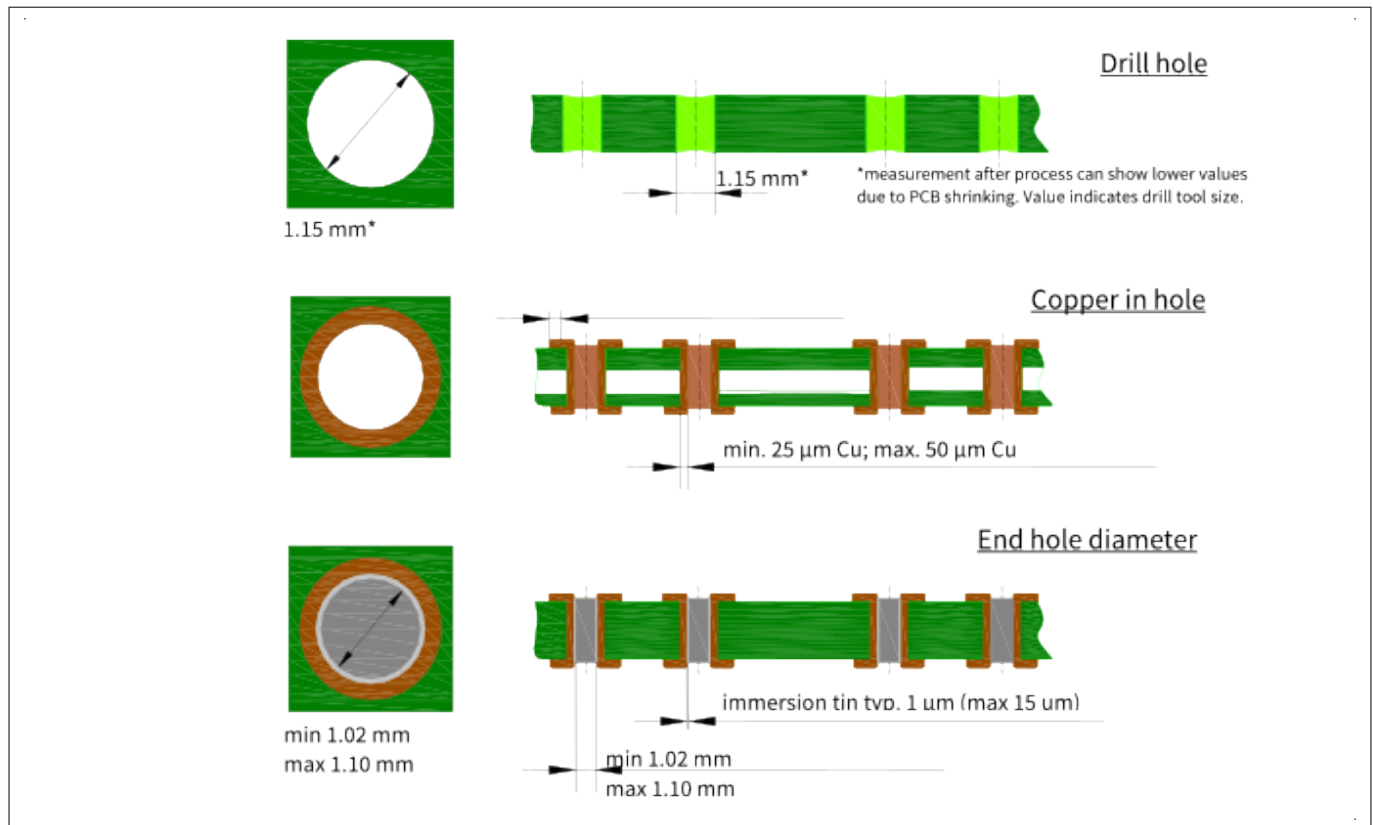


Figure 5 Structure of a PCB according to the specification in Table 1

3.2 General hints for the PCB Footprint

PCB footprint typically depend on PCB manufacturing processes and customer specific design rules. The following table can be understood as a best practice and starting point for system design.

Table 3 Hint for PCB footprint holes. PCB bottom layer is defined on side of the power module

No	Type	PCB Implementation Hint
1	X-Pin holes	Hole at 0/0 Position <sup>1)</sup> End hole Diameter: 5.90 mm (see Table 2) Top Layer Copper Diameter: $\geq 6.40$ mm Mid Layer Copper Diameter: $\geq 6.40$ mm Bottom Layer Copper Diameter: $\geq 8.00$ mm Hole at 87/82 Position* End hole Diameter: 4.90 mm (see Table 2) Top Layer Copper Diameter: $\geq 5.40$ mm Mid Layer Copper Diameter: $\geq 5.40$ mm Bottom Layer Copper Diameter: $\geq 8.00$ mm
2	Signal pressfit pin holes	See Table 1

(table continues...)

## 3 PressFit Assembly

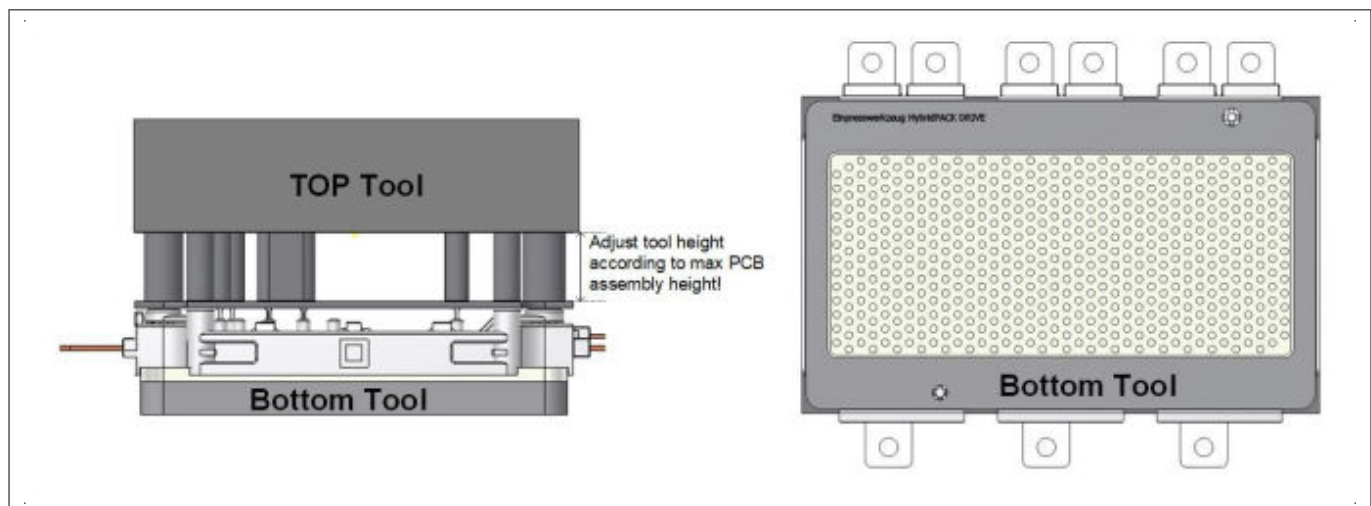
**Table 3 (continued) Hint for PCB footprint holes. PCB bottom layer is defined on side of the power module**

No	Type	PCB Implementation Hint
3	Components Keepout around pressfit Pins	Uncritical packages like SO, TSSOP, QFP or not safety relevant SMD resistors: >= 3 mm radius from the hole center Others: >= 4 mm radius from the hole center
4	PCB fixing screw holes	End hole Diameter: 3.60 mm Top Layer Copper Diameter: >= 7.00 mm Mid Layer Copper Diameter: >= 6.50 mm Bottom Layer Copper Diameter: >= 6.60 mm

1) The x-pin holes can be designed both as plated or un-plated holes. Plated holes with annular rings as noted in the table are the preferred solution. All plated holes are drilled at the PCB manufacturers within the same process and leads to best hole to hole pattern tolerances as a consequence.

### 3.3 Press-In Tools

This chapter describes a sample press-in tool, which can be adapted to project specific details like PCB assembly locations, maximum height of other PCB parts, etc. to avoid mechanical collisions during the press-in process. The press-in tool is made of two parts (see Figure 6).



**Figure 6 Press-tool example**

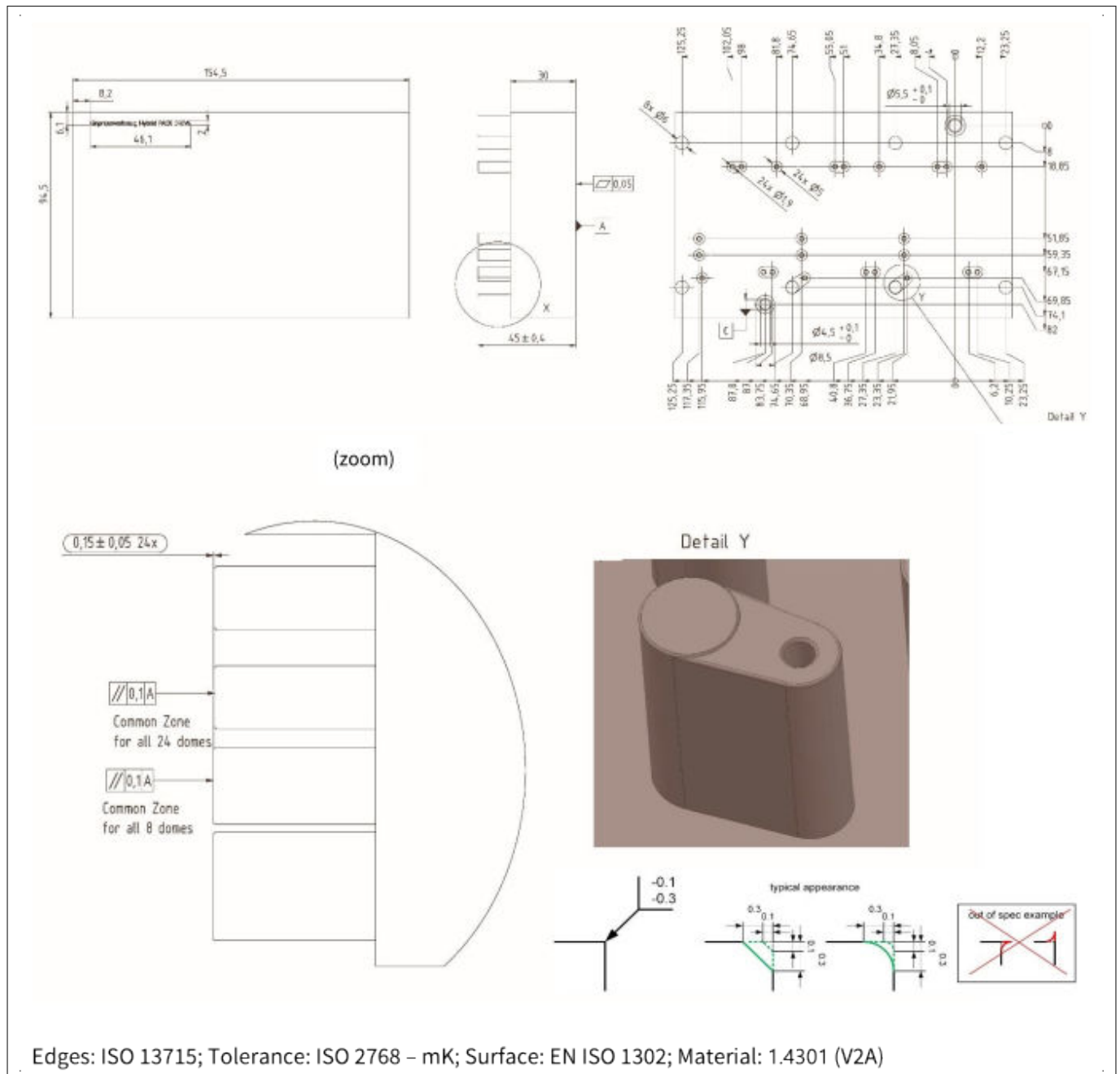
The bottom tool supports the power module baseplate and has to avoid damage of the pin-fin cooling area. The material and/or plating of the bottom part of the tool has to be selected in order to avoid scratches and damage of the baseplate sealing area. The holes for the X-pins avoid, by the poka yoke concept, a wrong orientation of the power module in the press-tool.

The top tool supports the PCB around the pressfit pins with cylindrical shapes and support the PCB during the press-in process. This part of the tool should be made of material, which can withstand the press-in forces. The top tool also has cylindrical shapes around the X-pins in order to avoid a press-in process with an incorrectly oriented tool or power module.

Please note that the top tool height (height of the cylinders) must be adjusted according to the maximum PCB assembly height. Collision of PCB top side assembly must be avoided.

## 3 PressFit Assembly

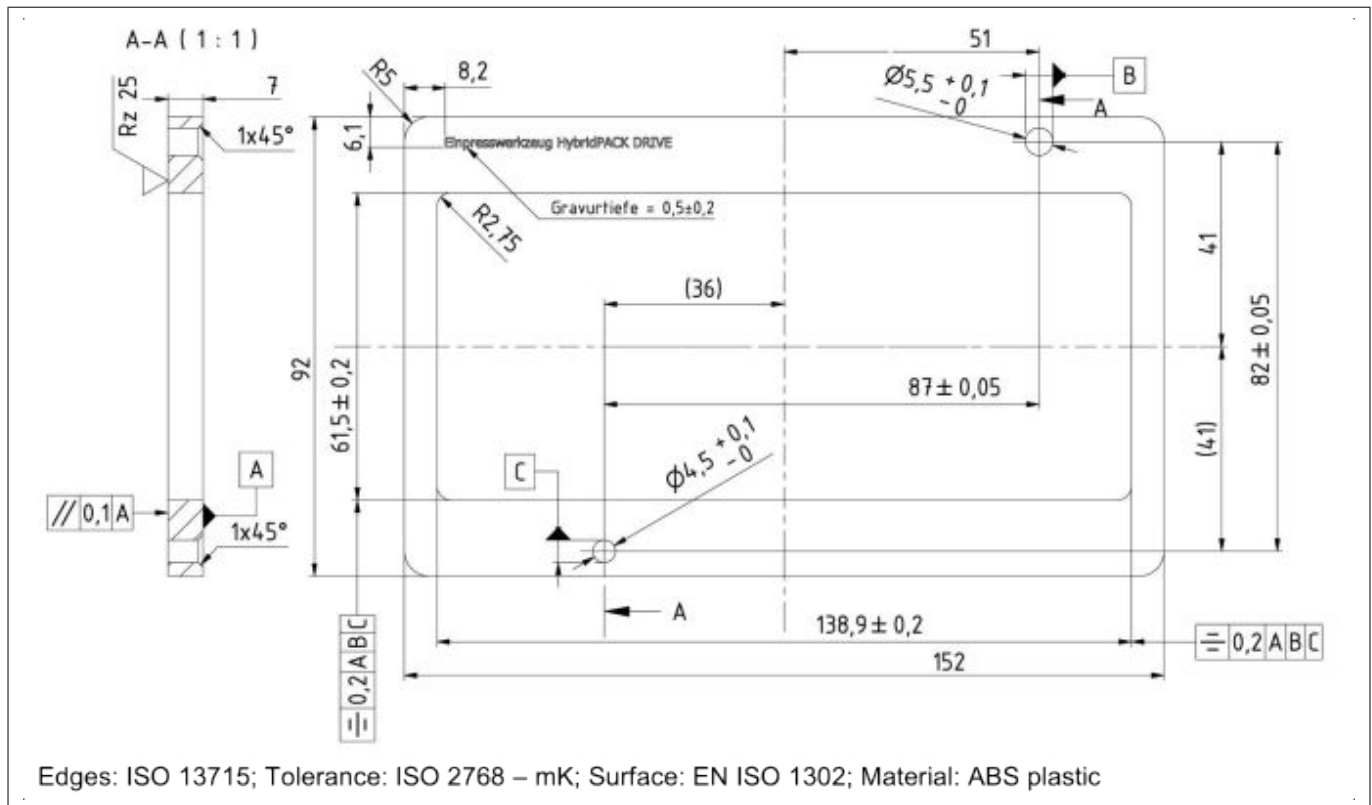
A mechanical drawing of the sample press-in tools is given in [Figure 7](#) and [Figure 8](#), and a 3D step model can be obtained from Infineon Technologies on request.



**Figure 7** Technical drawing of the sample press-in tool (Top Tool)

The standoffs for the 8 domes are designed in the press tool higher than the area for the 24 pins. This staged tool avoid or significantly reduces pull forces on the signal pins in the final assembly. The recommended staged tool lead to a mechanical robust assembly at minimized module stress.

## 3 PressFit Assembly



**Figure 8** Technical drawing of the sample press-in tool (Bottom Tool)

The bottom tool can protect the underside of the IGBT module (especially the PinFin and sealing area) against damage/scratching during the press-in process.

The press-tool can be used in a simple toggle lever press for engineering purpose or in a controlled machine for serial production.

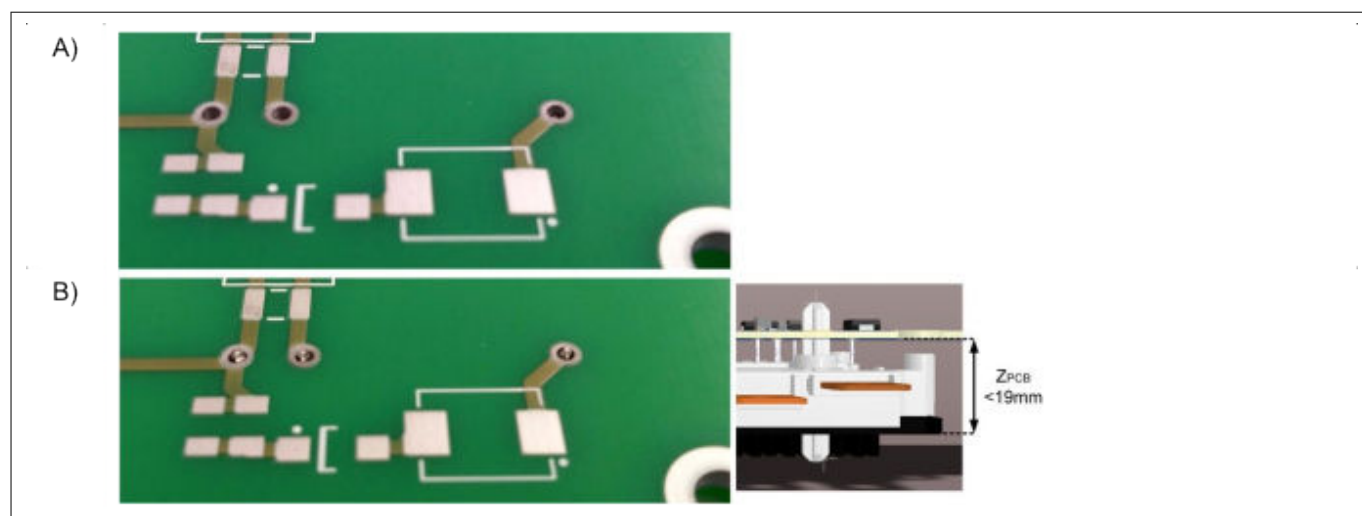
### 3.4 Press-In Process

#### 3.4.1 PCB alignment before the press-in process

The PCB can be assembled to the power module only in a correct orientation due to the poka-yoke mechanism of the X-pins. The PCB has to be positioned with a manual or automated handling tool to the X-pins without tilt. It is recommended to design a handling tool, which enables a significant play of the PCB in x-y direction. During the positioning of the PCB to the module the soft and round shaped X-pins will guide the PCB to the right position before the PCB will touch the pins. The signal pins itself will do kind of a “fine-alignment” while moving the PCB further down to the module. A low force in the range up to 10..20 N in z-axis is allowed on the PCB to support the final alignment process. In final position (before the press-in process) the signal pins will appear clearly at the PCB topside for 1.6 mm thick PCBs.

The system is ready for the press-in process when all pins are correctly inserted. They also appear on the topside of PCB. This status can be checked for example manually, by automatic optical inspection (AOI) or PCB height level (see [Figure 9](#) for typical appearance after correct PCB alignment process).

## 3 PressFit Assembly

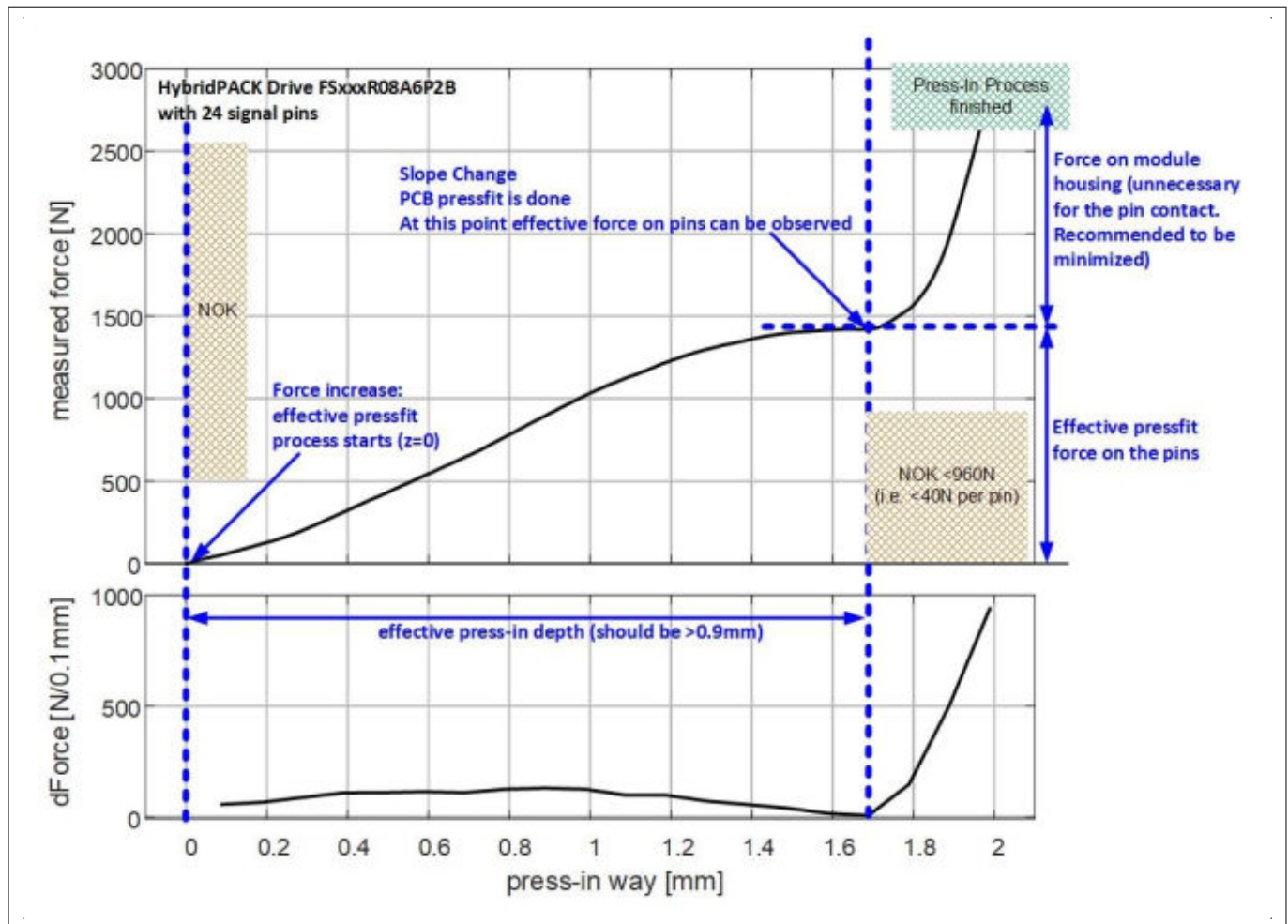


**Figure 9** PCB at beginning of alignment process (A). After correct alignment, the pins are inserted in the PCB and are clearly visible at the PCB top side (B). The system is now ready for the press-in process

### 3.4.2 Press-in process description

The press-in process is recommended with a controlled force-distance method for serial production. For testing under laboratory conditions, a manual toggle-press also typically gives good results.

## 3 PressFit Assembly



**Figure 10** Typical way-force press-in diagram from a HybridPACK™ Drive module FS820R08A6P2B with 24 signal pins

The Figure 10 show an example of a HybridPACK™ Drive press-in process. The press-in process starts when the force increases. At this point the z-axis is set to 0 mm in this diagram. In case an initial high peak is detected it may indicate a failure in the process like PCB hole plugged with solder, not properly inserted PCB before the process starts, machine collision with other external parts, etc.

The force curve will increase smoothly while pressing down the PCB (see diagram 0 to 1.6 mm). This force curve will have same appearance for different press-in speeds. Lower press-in speeds as noted in Table 4 are not allowed as the press-in forces can increase and damage the pin. Higher press-in speeds are uncritical for the module. The maximum speed is noted with respect to press-in equipment limitation. A higher speed was not tested and can therefore not recommended.

Considering the 1<sup>st</sup> derivative of the force-distance diagram (see dForce diagram) a significant slope change can be detected at the end of the process (in the example at about z = 1.6 mm). At this point the PCB is fully pressed on the module housing and the effective part of the press-in process is done. At this point the force should be minimum 40 N per pin (that is 960 N for HybridPACK™ Drive with 24 pins) in the example the effective pin force was 1.4 kN. Ideally the press-in process should be stopped as soon as this point is detected (that is dF stop criteria).

With the dForce curve it is also possible to record the effective press-length, which should be more than 0.9 mm to ensure that pins have sufficient overlap with the PCB vias. In the example the effective press-in depth was about 1.6 mm.

After the slope changing point, the PCB is already in contact with the module housing. Further pressing down increases the force on the housing. It is always beneficial to detect the slope changing point and to stop the

## 3 PressFit Assembly

press-in process as soon as this point is detected. The reason is that the additional force is unnecessary for the pin contact, which is already fully pressed-in and additional force only create unnecessary stress on the module housing.

A general spec on how to detect the slope changing point is hardly possible because it is also machine, speed, PCB, etc dependent. In the shown example the point is nearly in the area where dForce/way raises above 4 kN per mm which is much higher dForce/way compared to the effective press-in area before (about up to 1.5 kN per mm).

**Note:** *It is important that the press-in equipment is designed for the expected high forces. During the press-in process the bottom and top press tool must be parallel to each other and should be mechanically fixed without tilt.*

**Table 4** Overview press-in process

No	Description	Unit	Min.	Typ.	Max.	Remarks
1	Press-in speed	mm/s	0.4	2–4	8	During the press-in process it is not allowed to come under the minimum speed (no multistep press-in process). The maximum press-in speed is typically limited due to non ideal press machine. See explanation “stop criteria”
2	Max allowed press force on module	kN		dF stop criteria	dF stop criteria 3.5	The press-in process should be stopped when the slope change point is detected (effective press-in done, see <a href="#">Figure 10</a> ). The force recording speed, machine stop behavior has to be also taken into account for proper setting the “stop criteria”. See also <a href="#">Chapter 3.4.3</a>
3	Recommended effective press-in length	mm	0.9			The pin might be also gas tight at lower effective press-in length in case sufficient force was applied.

Explanation on “stop criteria” and maximum recommended press-in speed:



## 3 PressFit Assembly

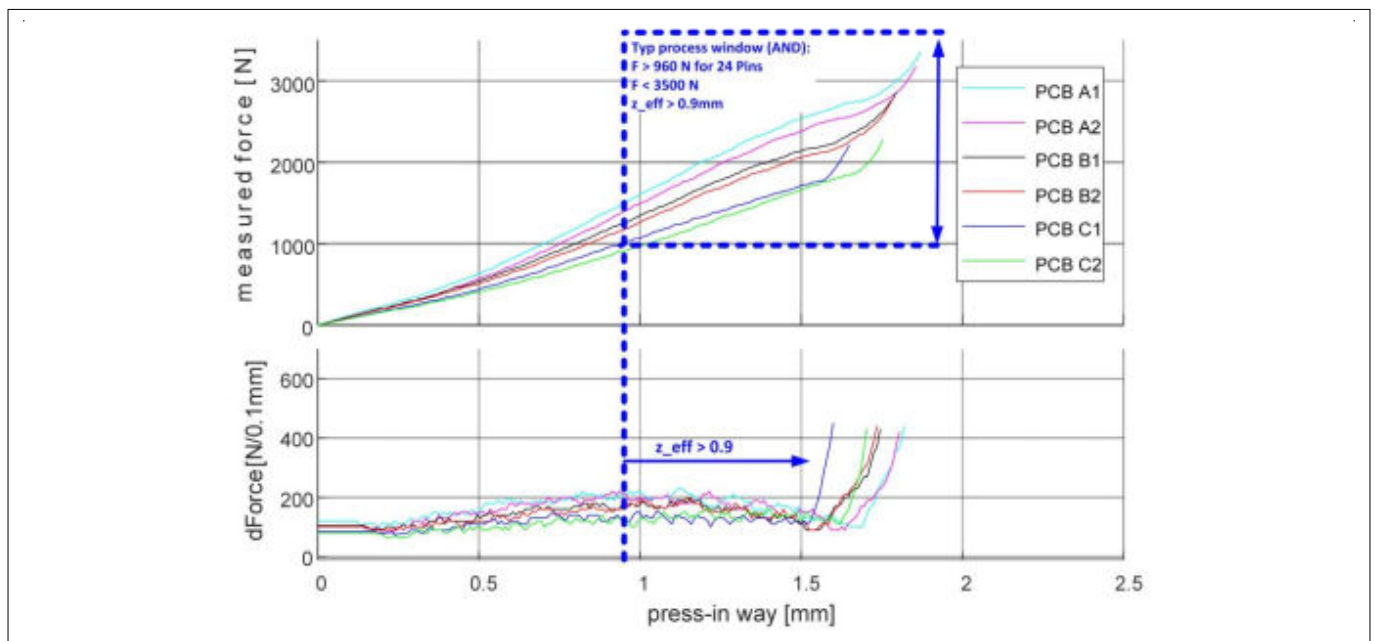
Please ensure that press machine has fast enough force recording and can stop the tool travel fast enough (that is consideration of machine delay).

A real press machine has limited bandwidth on force recording. After stop command the machine may take time until tool travel is really stopped. Both lead to a so called machine delay.

At end of the press-in process, where PCB come in contact to the mounting domes a load of about 1000 N per 0.1 mm (10 kN/mm) tool travel can be expected.

### 3.4.3 Typical press-in example with dF stop criteria

Figure 11 shows an example of different assembly tests with the recommended dF stop criteria. Different PCB designs from different PCB suppliers were applied in this experiment. Despite same machine parameters were applied it can be clearly seen that the press-in process is stopped as soon as the slope changing point is detected were the effective press-in process is done. For group A higher press-in way and higher press-in force was necessary compared to group C, but with dF stop criteria the tool travel is stopped always close to the individual ideal point. At end of the process it can be checked if all parameters were OK, for example if minimum press-in force was reached and maximum allowed force not exceeded as well as if the minimum recommended effective press-in length was reached.



**Figure 11** Typical press-in example with the recommended dF stop criteria. FS820R08A6P2B modules were assembled with Harting CPM prestige press machine [2]. Different PCB layouts from different PCB suppliers (PCB group A to C) were tested

### 3.4.4 Alternative: Press-In Process with distance keeper

Especially for system design where PCB is larger than the power module it can be a major advantage to use a modified press-in tool with a distance keeper and to fix later the PCB directly at the inverter not the module housing (see Chapter 5.3 for more details).

Adjusting for such a press-in approach following items have to be considered.

- Press-tool distance keeper (1) should be designed at the positions of the 8x module baseplate holes
- Press-tool distance keeper (1) should have a minimum 8 mm diameter

## 3 PressFit Assembly

- Maximum force press-in force of 3.5 kN should not be exceeded
- Press-tool distance keeper height: Gap between PCB and module housing domes should be at least 100  $\mu\text{m}$  after the press-in process



**Figure 12**      **Sample press tool with distance keeper**

## 4 Soldering Modules (alternative to PressFIT)

### 4 Soldering Modules (alternative to PressFIT)

The HybridPACK™ Drive signal pin was originally designed for press-in process. Experience has shown that the tin plated pin with nickel underlayer is also suited for selective solder process. This chapter gives a guideline how to solder the HybridPACK™ Drive modules properly. Press-in and soldering should not be performed subsequently. The described soldering is only an alternative mounting option to pressfit and should not be seen as a replacement for it. Furthermore, a solder process does not lead to higher robustness and requires much longer process times in the assembly line.

#### 4.1 Requirements for the PCB for soldering

For soldering the signal pins it is required to specify the PCB slightly different. The list of requirements can be seen in [Table 5](#). The general hints for the PCB footprint can be fully transferred from [Chapter 3.2](#) also in the case of soldering the modules.

**Table 5 Requirements to the PCB for soldering process**

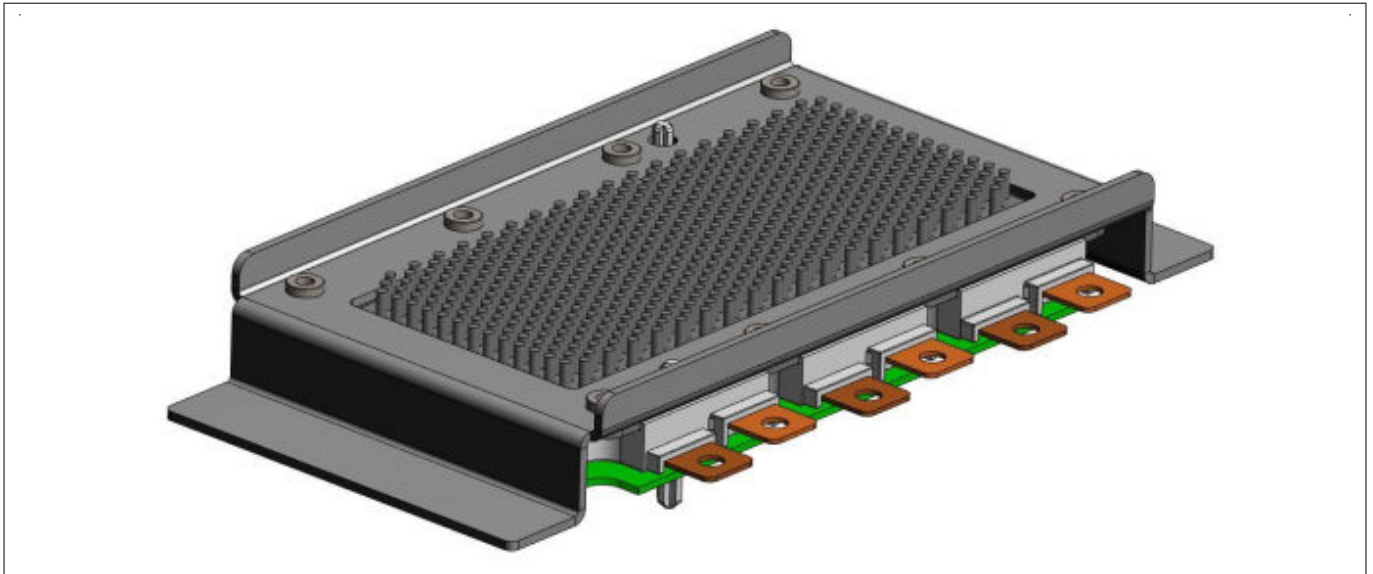
No	Description	Unit	Min.	Typ.	Max.	Remarks
1	End hole diameter	mm	1.5	1.55	1.6	Other hole sizes might be possible but were not tested
2	Copper thickness in hole	μm	25		50	
3	Copper thickness of conductors	μm	35	70 105	400	
4	Hole to hole pattern tolerance	μm			± 100	In typical PCB manufacturing hole to hole pattern is lower than ± 80 μm
5	Recommended PCB thickness	mm		1.6		Target value with +/- 10% thickness tolerance
6	Recommended maximum PCB spring force in characterization (see <a href="#">Chapter 5</a> )	N/mm			450	For high thermal cycle system robustness it is recommended to limit PCB stiffness (i.e. spring force). See <a href="#">Chapter 5</a> for more information
7	Metallization of circuit board		Immersion Tin (Sn chemically) OR HAL leadless			ENIG might be also possible but was not tested
8	Metallization of pin		Ni/Sn (galvanic)			The Sn plated pin with nickel under layer avoids potential whisker growth out of the upper galvanic tin layer

#### 4.2 Solder Tools

The following selective solder process typically requires a solder-jig, which keep the module + PCB in kind of a zero z-position regarding the selective solder station. A details technical drawing is explicitly not given as these solder jigs have to be adapted for different solder stations and PCB sizes.

Important in the design of the solder-jig is that the jig provide a mechanical stability in the module x-axis (that is along the long side). The module has to be fixed to the solder-jig during the process in such way that the module keeps the geometry of a mounted module.

## 4 Soldering Modules (alternative to PressFIT)



**Figure 13** Sample solder jig for HPDrive which can ensure a mounted module condition during the entire solder process (Picture Source: Alpitronic GmbH)

### 4.3 Solder Process

In case customer select the solder process for assembly of the HybridPACK™ Drive modules in their inverter system a slightly modified mounting order compared to the standard order for press-in process is recommended and noted as follows:

1. Fix/clamp power modules to the solder-jig
2. Align PCB to the power module (the X-Pins will support this process)
3. Fix the PCB on the power module by screws
4. Solder process of the signal pins. Requirements to the process see [Table 6](#)
5. Release power modules from the solder-jig
6. Prepare cooling system with the sealing ring
7. Attach power module with PCB to the prepared cooling system
8. Fix module baseplate on the cooler by screws
9. Connect the module power tabs to busbar, capacitor, etc

**Table 6** Requirements for selective solder process

No	Description	Unit	Min.	Typ.	Max.	Remarks
1	Solder peak temperature of pins (Tp)	°C		260..280		
	Solder time at Tp	s		10..5		

(table continues...)

## 4 Soldering Modules (alternative to PressFIT)

**Table 6 (continued) Requirements for selective solder process**

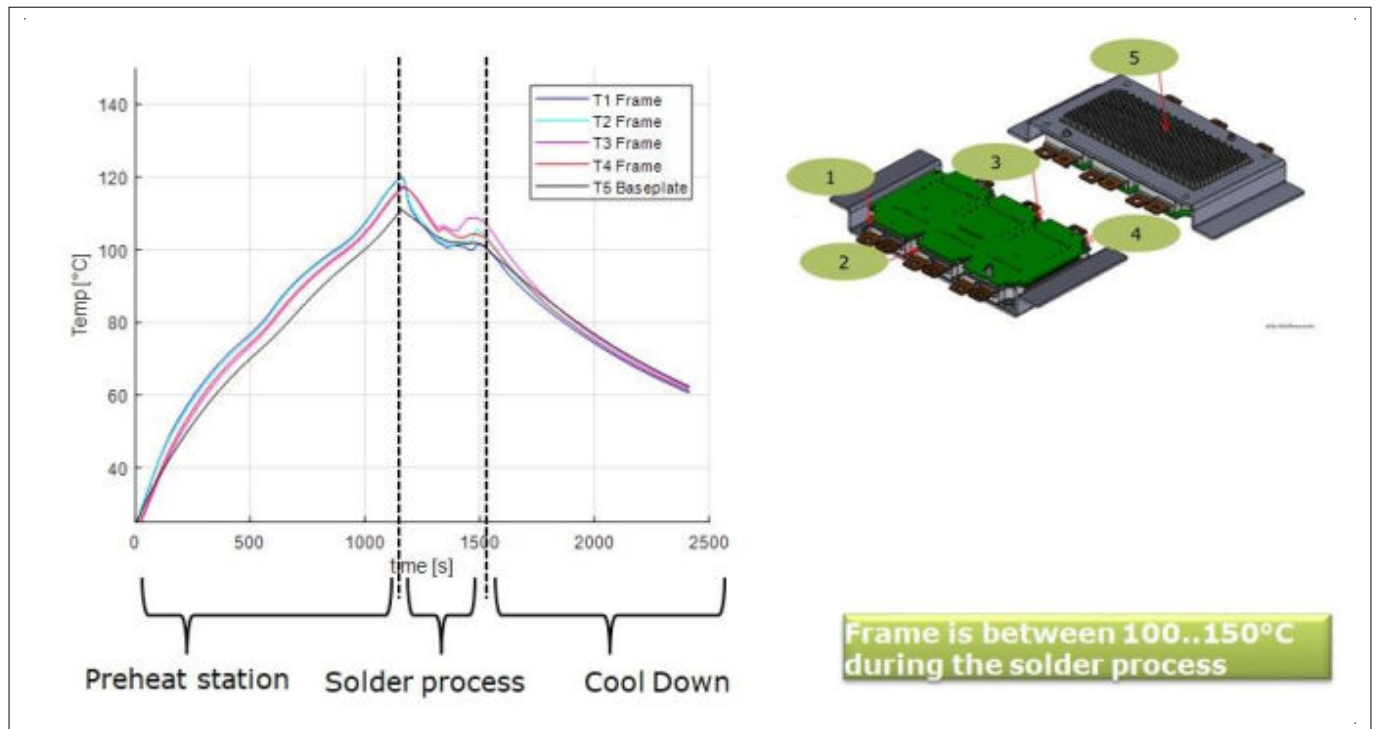
No	Description	Unit	Min.	Typ.	Max.	Remarks
2	Maximum local module housing temperature	°C			223	Hot spot at the module lid close to the pin up to maximum local module housing temperature allowed. The entire volume should not exceed 150°C. See also temperature spec at the module domes
3	Module dome temperature during solder TL	°C	100		150	TL: The time where the solder at the pins is above its liquidous temperature. This ensure that the PCB is fixed at position where module domes are in expanded condition
4	Module mounted	-		yes		Module should to be clamped/fixed to an appropriate solder-jig that its keeps the geometry like in a mounted condition

### 4.4 Typical solder process example

In this section an example of a solder process as described in the previous sections is shown. Customer can adjust this process within the specifications when needed. The following description is for illustration and provide a better understanding of the process. It should be seen only as a hint for setting up the final customized solder process.

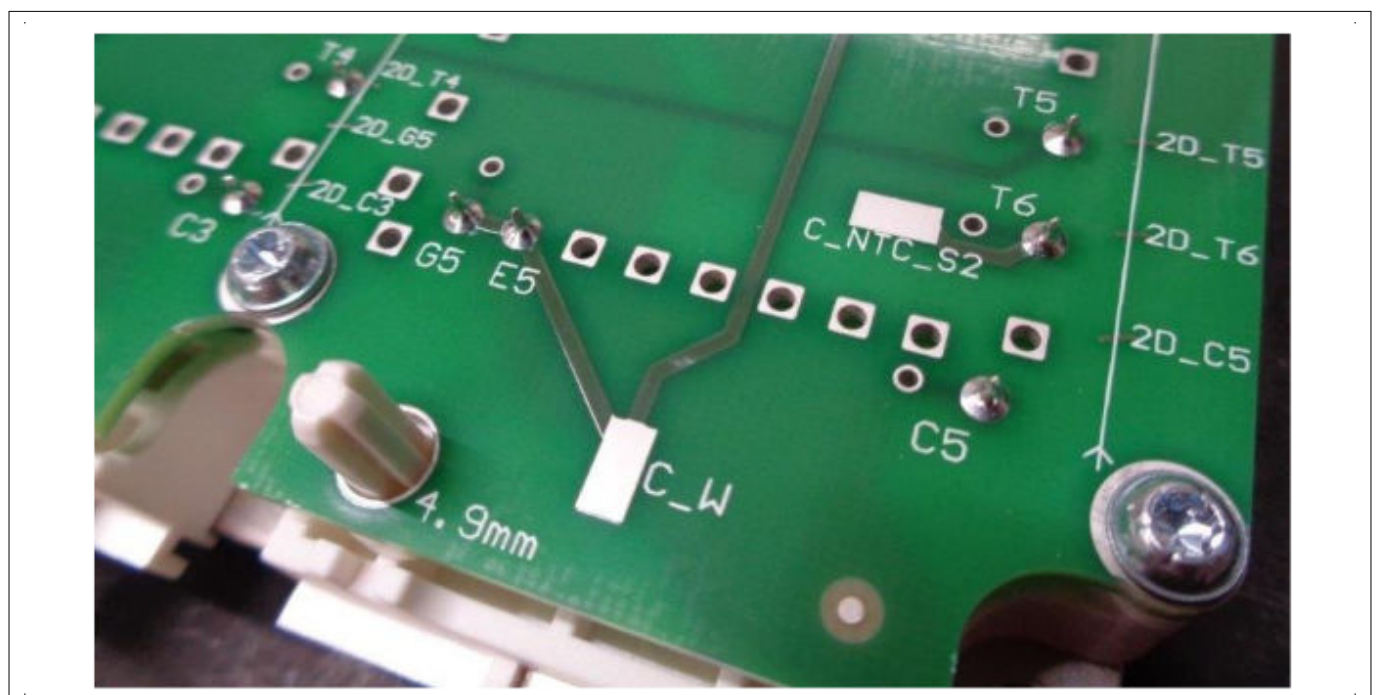
Figure 14 show an example of a solder test. Modules were mounted on solder-jigs. The modules were equipped with thermoelements at the plastic domes and one thermoelement at the baseplate. With this testmodule the solder-process was tuned in a study. The results of the selected process after this study is shown in the diagram. The modules on the solder-jig were pre-heated at defined temperature and time. After this pre-heating phase the module domes are within the intended temperature range of 100 to 150°C and the modules go directly to the solder-process where the pins are soldered to the PCB (see marked area with the dotted lines). The solder process itself is done at the time where solderpaste fall below its liquidous temperature. The stack has to be cooled down and can than the further processed.

## 4 Soldering Modules (alternative to PressFIT)



**Figure 14** Example of solder process setup. Power modules are mounted on solder-jig. Modules were equipped with 4 thermoelements at the module domes to check if plastic domes are within the given specification during the solder process

The sample test was performed together with a partner [5]. A standard oven was used for pre-heating. The solder process itself was performed on SEHO Selectline C with solderpaste ELSOLD SN100 MA-S Alloy and flux ELFLUX 1025 NC. A photo of final soldered pins is in Figure 15. The list of used equipment for this solder test should not be understood as spec or binding-recommendation for customer solder process. The optical appearance show a good and homogeneous solder fillet on all sides of the pins.



**Figure 15** Picture after soldering HybridPACK™ Drive (Picture Source Alpitronic GmbH)

5 PCB Design hint for high thermal cycle system robustness

## 5 PCB Design hint for high thermal cycle system robustness

Especially in applications where high module ambient temperatures and/or high thermal cycle stress is expected it is recommended to take care in system design for minimized pin pull forces. Following parameters can be optimized in the system design:

- - PressTool in combination with PCB Layout (see sample tool of [Figure 7](#) and [Table 2](#) item 4)
- PressStop criteria (use dF stop criteria of [Table 4](#))
- PCB stiffness/spring force (more detail within the sections of this chapter)

No	Description	Unit	Min.	Typ.	Max.	Remarks and known common mistakes
7	Recommended maximum PCB spring force in characterization (see <a href="#">Chapter 5</a> )	N/mm			450	For high thermal cycle system robustness it is recommended to limit PCB stiffness (i.e. spring force). See <a href="#">Chapter 5</a> for more information

- PCB mounting positions (for example see [Chapter 5.3](#))

After implementation of final design and assembly it is necessary to perform a system qualification, where system robustness is tested according to the specific application needs (see also for example system qualification tests in LV124).

### 5.1 PCB stiffness/spring force characterization

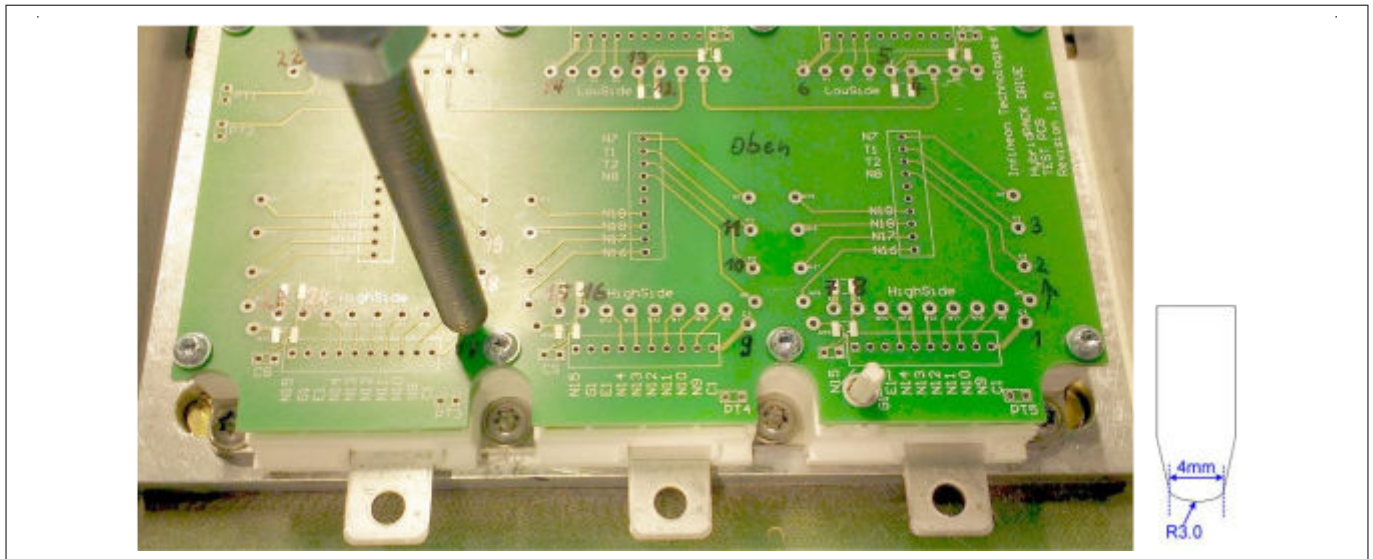
Displacement of the PCB in final mounted condition in the z-axis lead to pin pull and push forces. The PCB is fixed at the mounting positions and such relative displacements in z-axis at the pin positions with respect to the mounting positions can be seen as spring forces. Before starting final system qualification tests, it is recommended to characterize the spring forces of an individual PCB design mounted on the power module. This characterization can be performed in the lab with the following procedure:

Characterization procedure PCB spring force:

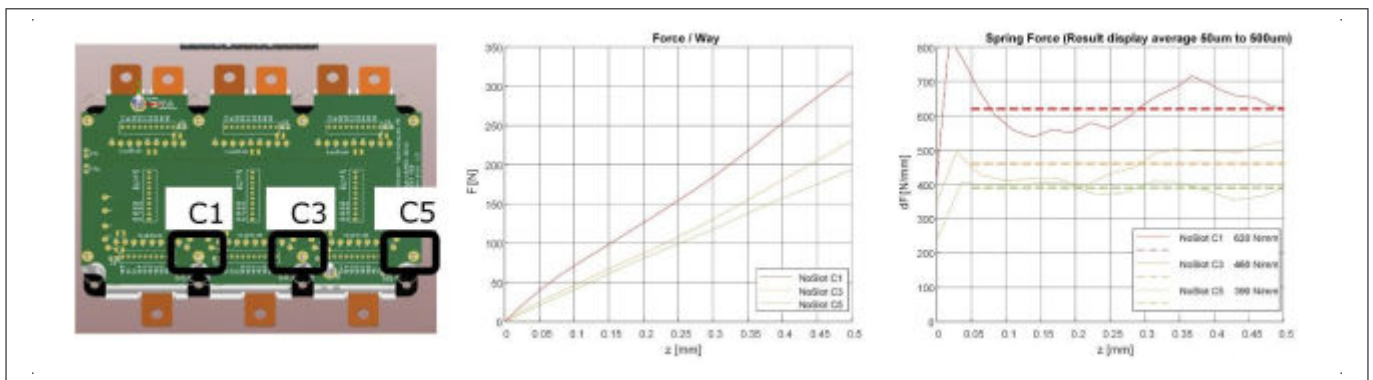
1. Use a mechanical power module sample w/o pins
2. Mount module on cooler/housing
3. Fix the PCB same as in the final system typical by 8 Ejot screws on the on the module domes. In case of design with external PCB mounting positions, use the corresponding fixing points
4. Measure at the module pin positions with a stamp the distance/force curve of the mounted PCB. (Typical stamp diameter 4 mm R3.0 with a travel distance of about 0.5 mm at 0.4 mm/s tool travel)
5. With the recorded distance/force curves it is possible to calculate the pin position individual PCB spring forces in N/mm (that is the 1<sup>st</sup> derivative of the distance/force curve)

The approach is only considered for design characterization within system optimization. Due to the high forces on the PCB and potential damage of the part, it is strongly recommended to scrap this tested part after the mechanical test.

## 5 PCB Design hint for high thermal cycle system robustness



**Figure 16** Example of a typical PCB spring force characterization on a module sample without pins. A stamp can record at the pin positions the individual PCB spring forces



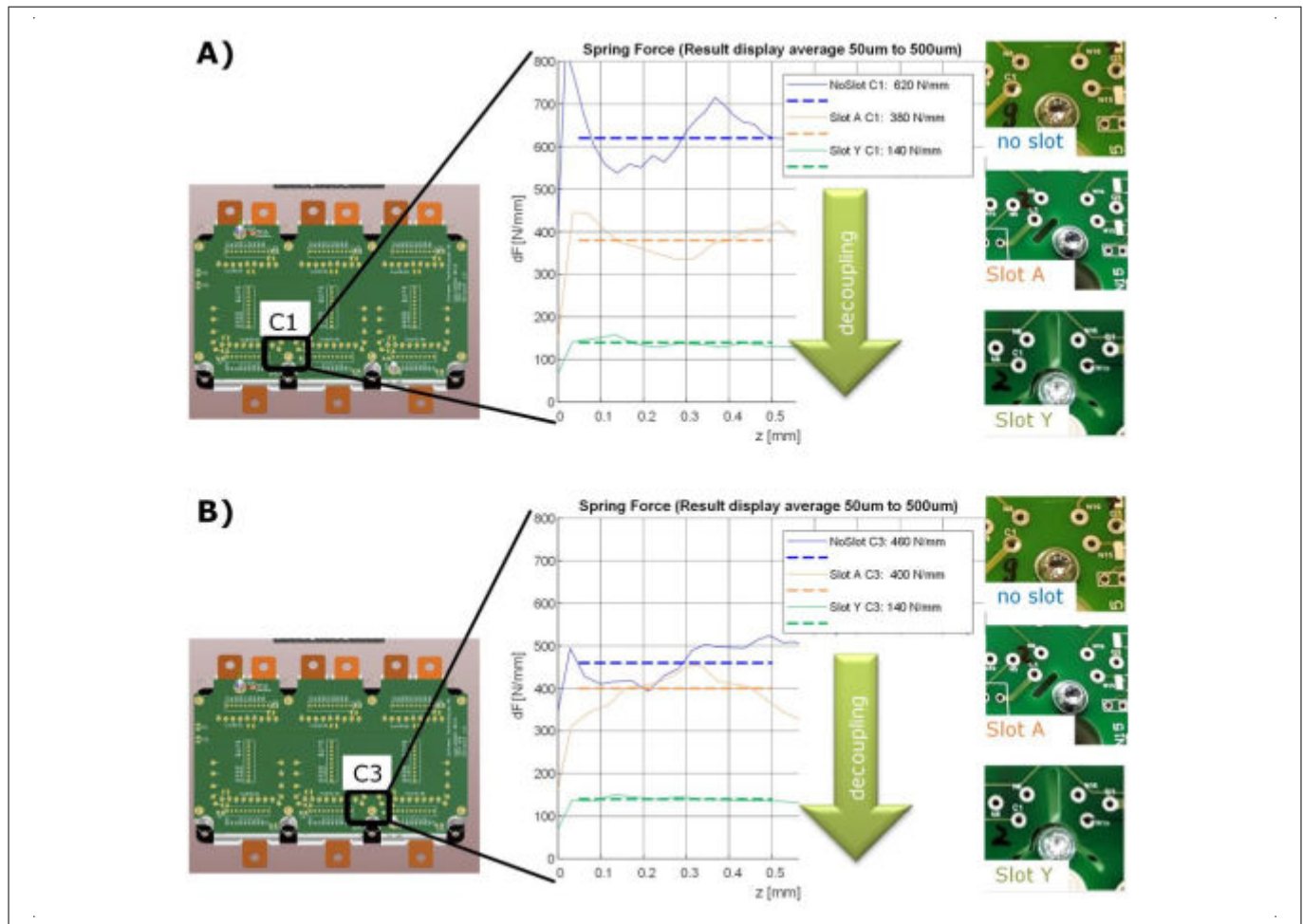
**Figure 17** Example of characterized PCB way/force curves at pin position C1, C3, C5 and the corresponding spring force values. Information how to reduce spring forces can be found in [Chapter 5.2](#)

### 5.2 PCB slots for spring force reduction

A simple but effective measure to reduce PCB spring forces are slots in the PCB between pin position and the corresponding mounting points. An example of different slot designs in comparison with a non-slotted PCB can be seen in [Figure 18](#). Larger slots lead to lower spring forces and can decouple mechanical stress from the pins. On the other hand the PCB fixation point is typically needed to ensure also a high robustness against vibration stress.



## 5 PCB Design hint for high thermal cycle system robustness



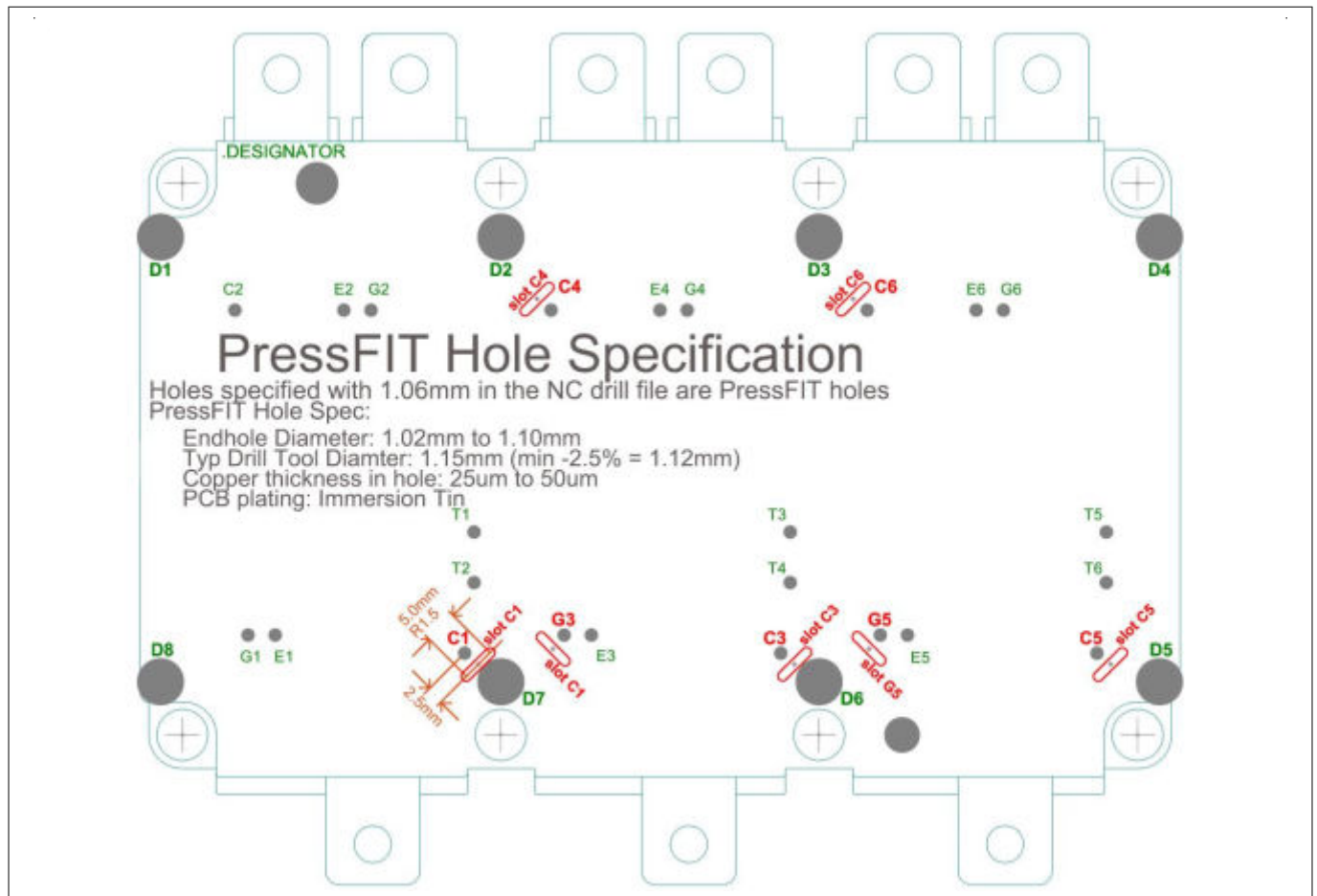
**Figure 18** PCB spring force study with different PCB slot design (no slot, slot A and slot Y) at two pin positions (C1, C3). Larger slots lead to higher mechanical decoupling and lower pin stress in case of displacement in z-axis

Chapter 5.3 show a typical PCB footprint, which should be suitable for most system combinations and can be seen as a starting point for the system designer.

### 5.2.1 Typical PCB Footprint with slots

Figure 19 show an example of a PCB footprint were the recommended maximum spring forces listed in Table 1 are typically achieved. But the results are subject to applied material, process and layout combinations, which can lead to different results. Therefore, it has to be noted that the footprint of Figure 19 should be understood only as starting point for the system design. In case the design targets are not meet with the initial design, Figure 18 show other for example larger slots which lead to lower spring forces. The slot design can be also adjusted to specific needs of the PCB design rules and manufacturing processes.

## 5 PCB Design hint for high thermal cycle system robustness

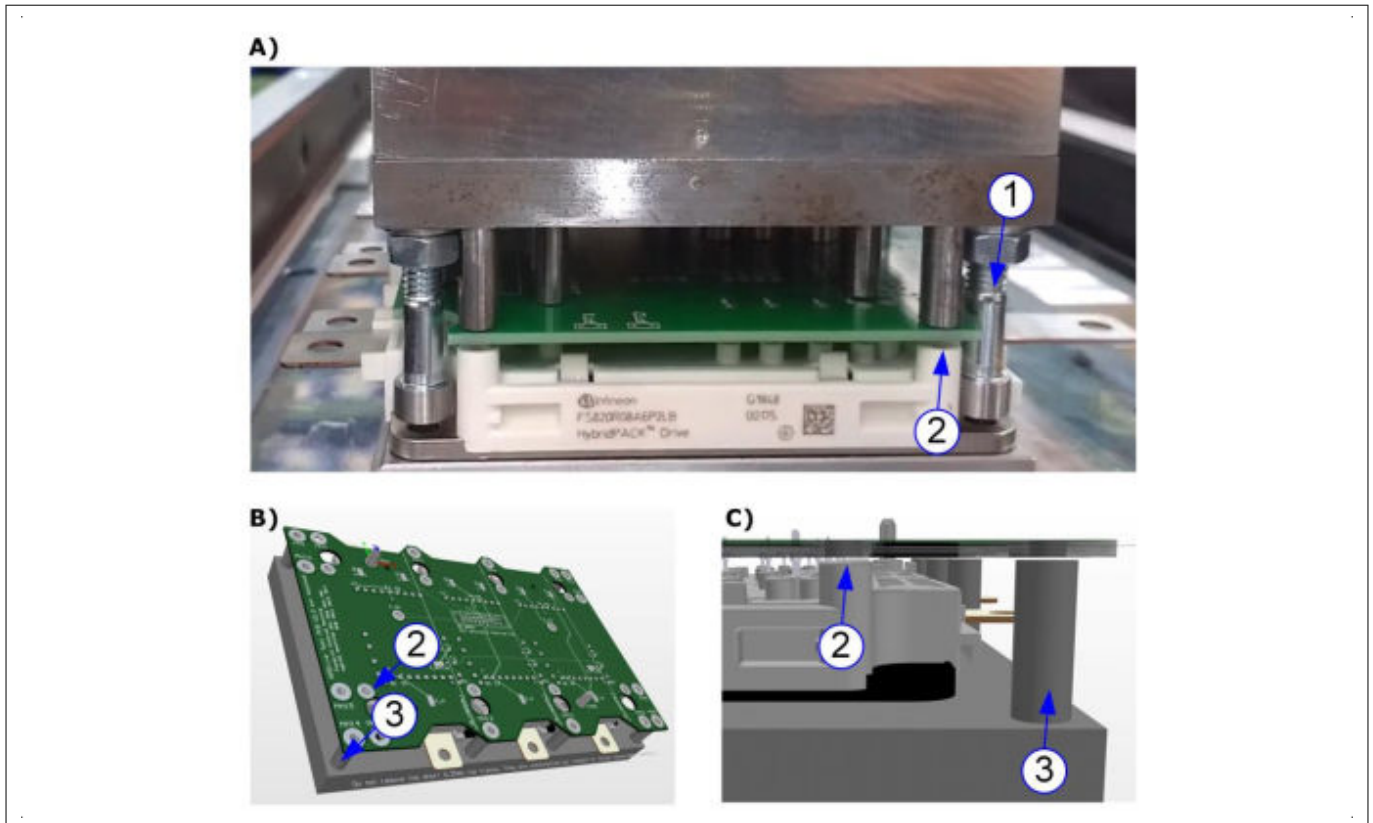


**Figure 19** Example PCB footprint with slots to limit spring forces. Slots are placed at pin locations close to mounting domes (C1, C3, C5, C4, C6, G3, G5)

### 5.3 PCB design for module external mounting

With a press-tool and process as described in [Chapter 3.4.4](#) it is possible to press a PCB with at certain distance to the power module (see also [Figure 20A](#)). After the press-in a gap between PCB bottom side and the power module housing domes remain (see indicated area (2) in the [Figure 20](#)). Inverter system designer can implement a PCB fixing point outside of the power module (see indicated area (3) in the [Figure 20](#)). This fixing point has to be designed with a slightly lower height in order to provide PCB push force on the power module after fixing the PCB by screws to the fixing point. It has to be clearly mentioned that no screws (i.e. the Ejoy screws) are allowed at the module domes in case of module external fixation method. A small gap between module and PCB is intended and has to remain after the final assembly.

## 5 PCB Design hint for high thermal cycle system robustness



**Figure 20** Example of distance press-in combined with module external mounted PCB. Distance keeper (1) ensure a certain distance of PCB to module dome (2). PCB can be fixed externally of the module (3)

Due to the larger distance of PCB fixing point to the pins it is a typical system behavior that spring forces of the PCB are reduced in such way that design recommendation of [Table 1](#) is fulfilled without slots in the PCB close to the signal pins.

## 6 Power Module Cooling System

### 6 Power Module Cooling System

The power losses occurring in the module must be dissipated in order to not exceed the maximum permissible operating temperature specified in the datasheet. Therefore, the design of cooling system/heat sink is of great importance.

HybridPACK™ Drive has a pin-fin array on the base plate, which makes liquid cooling very effective in sense of the thermal performance. The base plate is made of copper (Cu) material with nickel (Ni) plating. The pin fin structure is suitable for cooling fluids like water/ethylene glycol mixture.

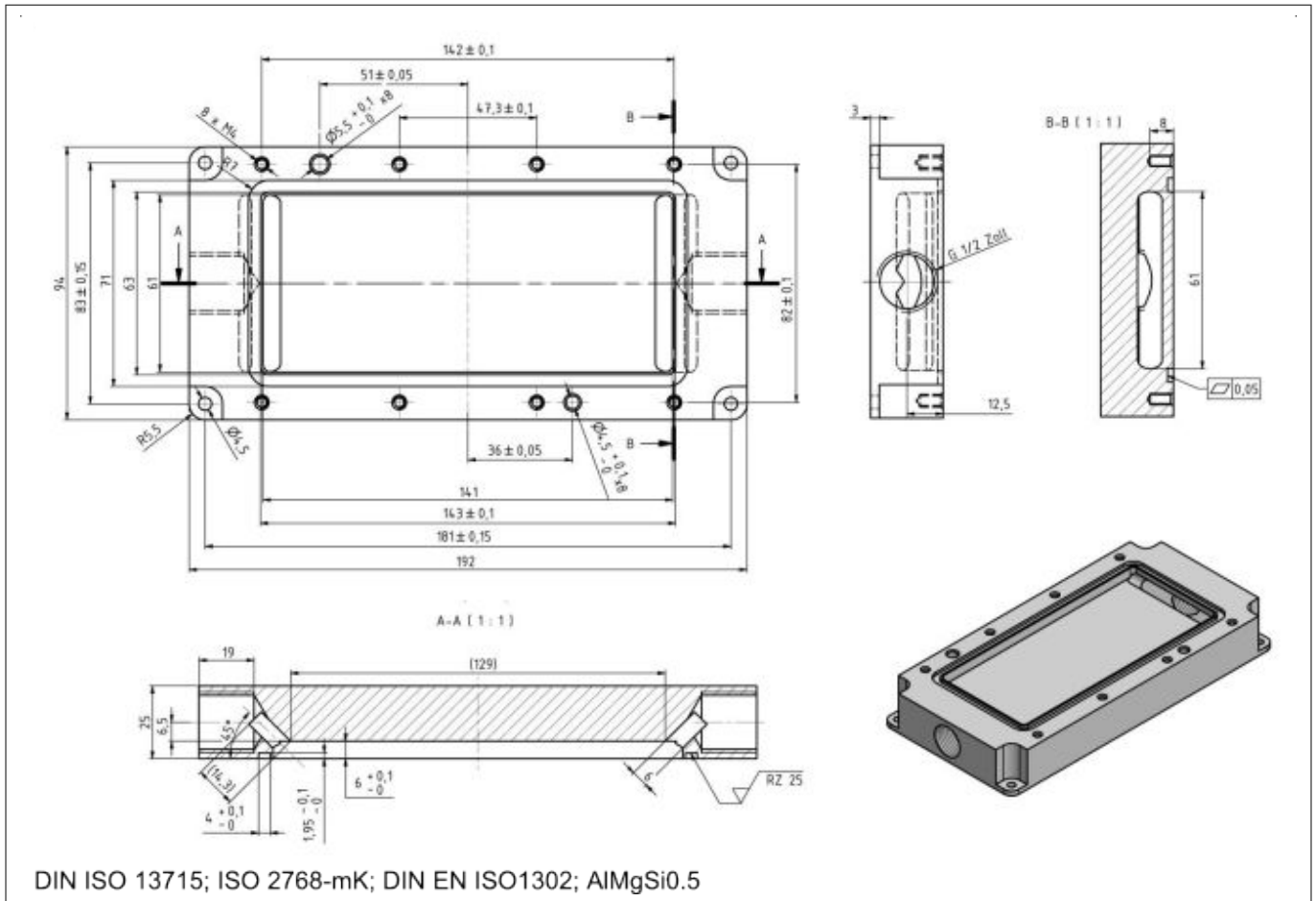
**Note:** *During the mounting process, damage to the nickel plating or mechanical deformation of the pin fin structure as well as contamination, scratches or other damage in the sealing region (see [Figure 25](#)) must be strictly avoided.*

#### 6.1 Reference Cooler Design

The cooler design has a great impact on the overall cooling performance, which means the combination of thermal resistance/impedance, pressure drop, and cooling flow rate. So, for all of these thermal related product specifications a reference cooling system is needed, where the given specification values are valid.

- The reference cooler design for HybridPACK™ Drive with PinFin baseplate is shown in [Figure 21](#)
- The reference cooler design for HybridPACK™ Drive “Wave” with its Ribbon Bond Cooling Structure (for example FS770R08A6P2B) is shown in [Figure 23](#)
- The HybridPACK™ Drive with Flat baseplate is not shown. These modules can be mounted to one of the reference coolers for the PinFin or the Ribbon Bond cooling structure in order to have a simple performance scaling option. Furthermore, the Flat baseplate can be mounted also on closed cooler systems where heat transfer is conducted via thermal grease. For closed cooler systems a thermal grease thickness of typical 70 µm has to be applied

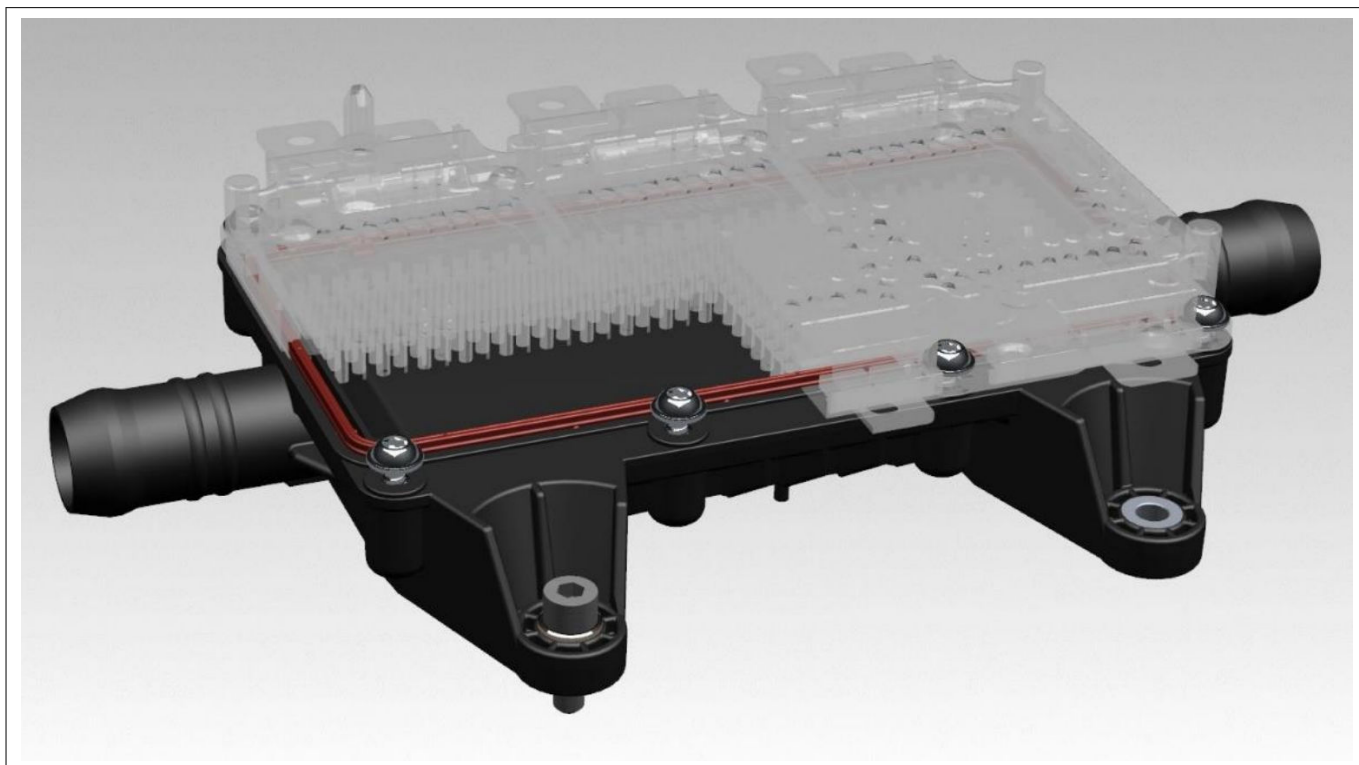
## 6 Power Module Cooling System



**Figure 21** Reference cooler design for HybridPACK™ Drive with PinFin Cooling Structure (e.g. FS820R08A6P2B)

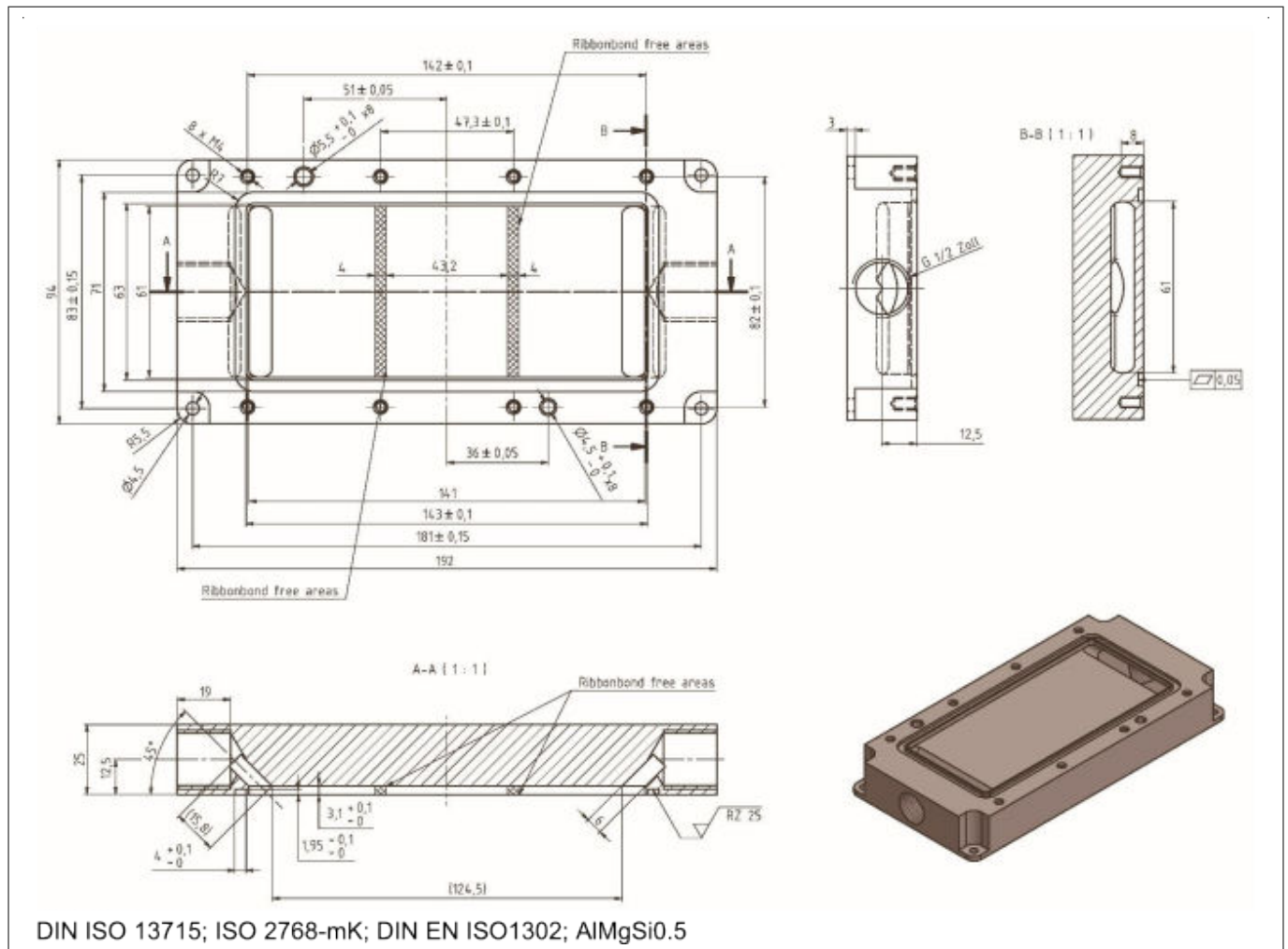
## 6 Power Module Cooling System

Another cooling solution was developed in a joint venture between Quarder and Infineon. The plastic cooler is produced by Quarder and is validated for automotive use (see [6] and [7]).

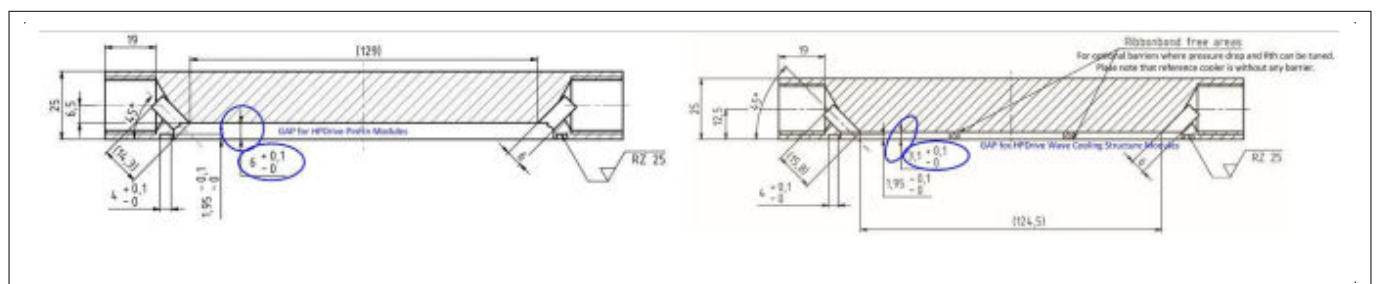


**Figure 22** Thermoplastic reference cooler housing with mounted IGBT Modul for HybridPACK™ Drive

## 6 Power Module Cooling System



**Figure 23** Reference cooler design for HybridPACK™ Drive “Wave” with its Ribbon Bond Cooling Structure (e.g. FS770R08A6P2B). Optional: In the marked areas “Ribbonbond free area” small barriers can be designed in the cooler to generate additional turbulence. Please note that pressure drop will be significantly increased for minor Rth reduction. The reference FS770 cooler (see also datasheet values) does not consider optional barriers and is designed with simply flat cooler bottom as shown in the picture



**Figure 24** Difference in the cooler design for PinFin and Ribbon Bond cooling structure as an overview

The cooler can be designed differently if other tradeoffs of thermal resistance/impedance, pressure drop and flow rates must be achieved. Therefore, the reference cooler should be regarded as a design example, where the values from the corresponding product specification can be achieved.

The following requirements must be considered when either the reference design or other designs are used.

## 6 Power Module Cooling System

- Roughness of the cooler:  $\leq$  RZ25 (DIN EN ISO 1302) in area of the sealing
- Cooler Flatness at the module area:  $\leq$  50  $\mu$ m

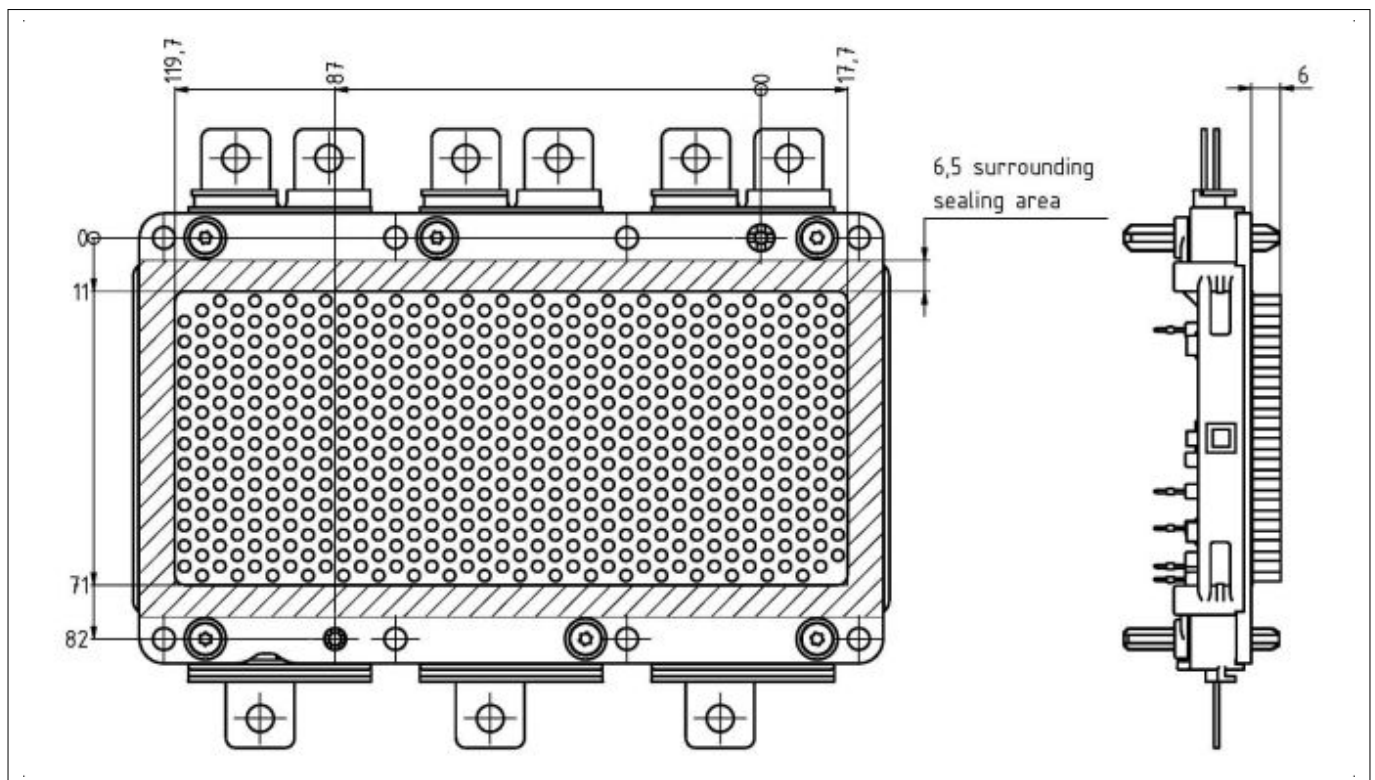
Exceeding the requirements above may lead to damage of the power module.

The cooler material should be AlMgSi0.5 or other alternative which is compatible to copper baseplate with nickel plating and which can withstand the mechanical stress required from a specific customer application.

The holes for the x-pins are designed in the reference cooler with a high margin (that is 8 mm depth holes). When necessary for the system design it is possible to reduce these holes to 6.0 mm depth.

### 6.2 Recommendation for the sealing ring

The power module baseplate is designed with a flat region of 6.5 mm surrounding the entire pin fin area (see [Figure 25](#)). Considering a 4 mm thick groove for the sealing ring and a positioning tolerance of the sealing area and the alignment to the cooling system of better than  $\pm 1$  mm, is it convenient to achieve a proper sealing.

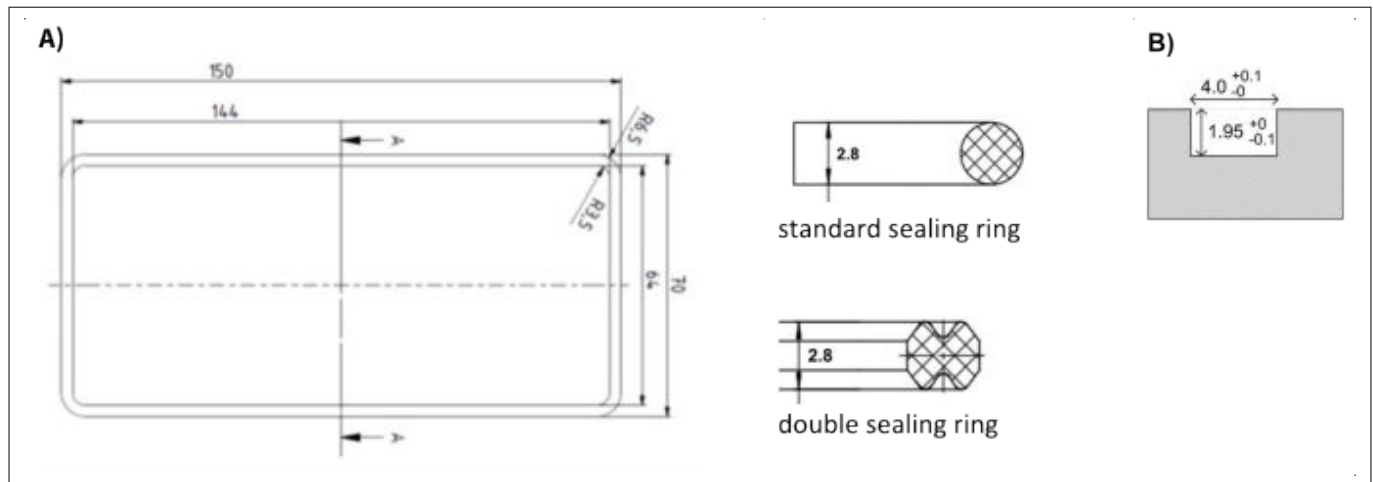


**Figure 25** The sealing region with 6.5 mm surrounding the pin fin area

For initial evaluation and power module qualification tests where an assembly was required, a sample sealing ring from Freudenberg Sealing Technologies part number 192944/192945 was used. This sealing ring was of EDPM 70 material and had a specification shown in [Figure 26](#). For easier assembly and even higher robustness margin, a double sealing ring can be applied (see [Figure 26](#)).



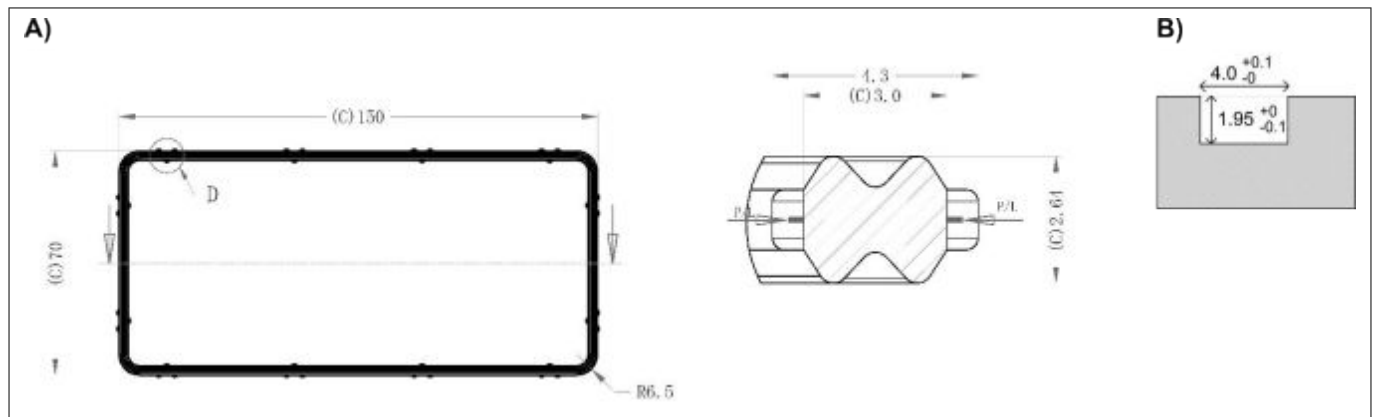
## 6 Power Module Cooling System



**Figure 26 Drawing of a EPDM 70 sample o-ring (A) and corresponding groove size in the cooler (B)**

The company Shanghai Transtech Sealing Technology designed a derivate of this initial design with the article number: YA-15070-E7061. This sample design was also applied in monitoring qualification and release of new products in the HybridPACK™ Drive modules, where mounting on cooler system was required for the test.

This design has “assembly nobs” supporting an easier assembly process. These knobs can fix the sealing ring after it is attached to the cooler groove and will avoid the risk of displacements during the module assembly process.



**Figure 27 Drawing of sample sealing ring designed by Transtech with knobs supporting the assembly process (A). Corresponding groove size in the cooler (B)**

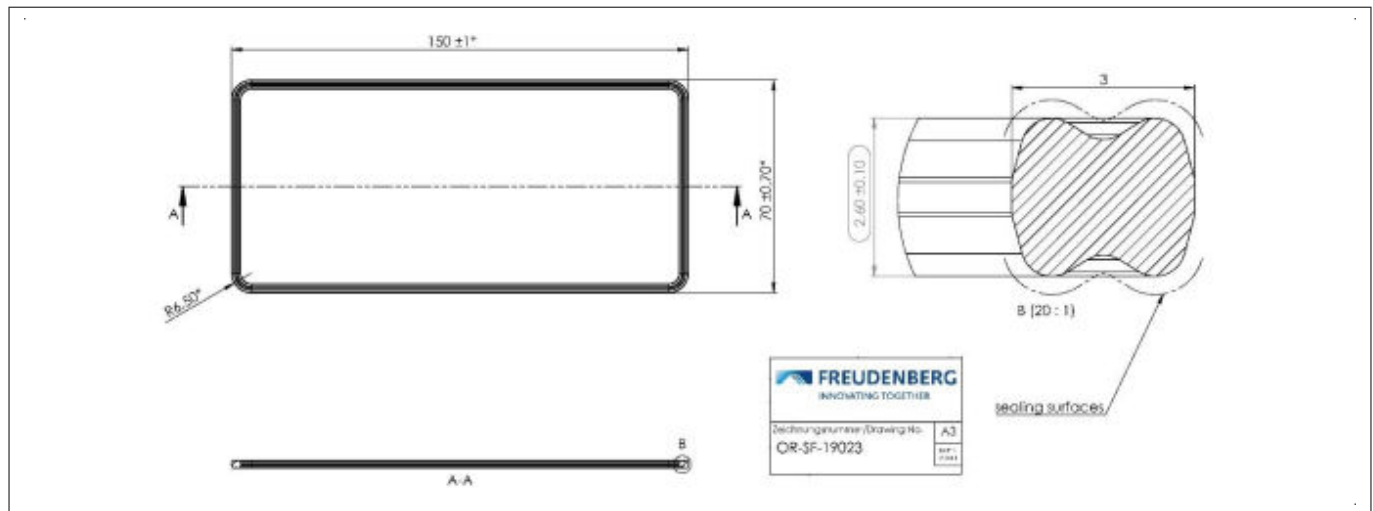
The sealing ring is held in a groove, which must be designed in the cooling system.

It should be noted that the sample sealing rings shown above lead to positive results in power module qualification tests. Nevertheless, it is necessary to perform system qualification test (for example according to LV124) if final system design and assembly meets the project specific application needs.

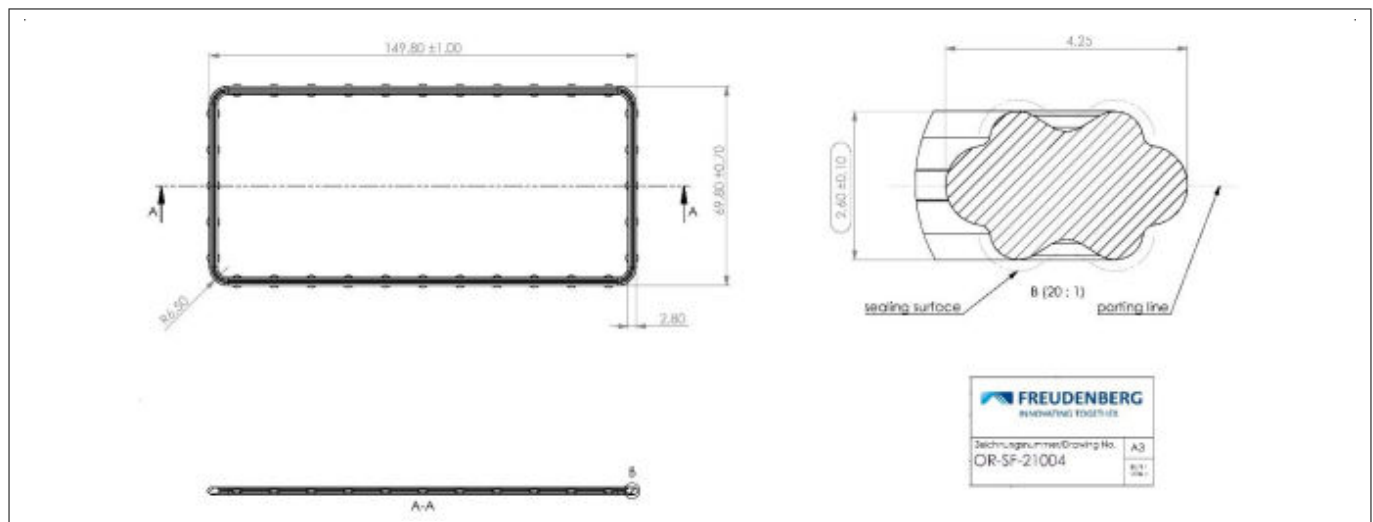
Additional design/supplier of the sealing ring:

Sealing ring suppliers further optimized sealing rings for the HybridPACK™ Drive power modules. Two designs are shown below, which were used successfully in latest monitoring tests.

## 6 Power Module Cooling System



**Figure 28** Drawing of sealing ring from Freudenberg Sealing Technologies OR-SF-19023



**Figure 29** Drawing of sealing ring with assembly knobs from Freudenberg Sealing Technologies OR-SF-21004

**Note:** That incorrect placement of the sealing ring in the cooler groove can lead to deformation of the power module baseplate and fluid leakage as consequence. It is to be noted that repair/rework after a wrong assembly is not possible.

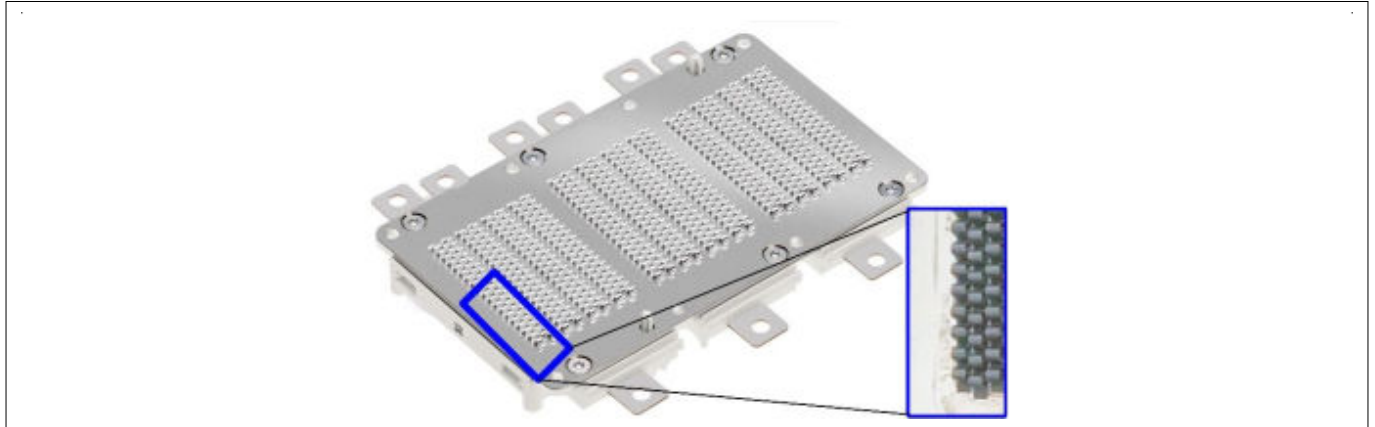
### 6.3 Cooling fluid

A general recommendation for a specific cooling fluid cannot be provided, as the power module is only one single part in the entire cooling system. Following items have to be considered at the system supplier to find appropriate coolant fluid:

- Coolant fluid with its corrosion protection has to be compatible with the aluminium of the cooler material and the nickel overplated Cu module baseplate
- Also other parts in the coolant system has to be compatible to the fluid type (for example Zn screws and chrome parts are typically not allowed in the cooling system)
- The fluid mixture has to provide enough anti-freeze for the application conditions. Freezing events of the fluid has to be strictly avoided. Freezing fluid will lead to plastic deformation of the power module baseplate and may lead to fluid leakage and/or isolation failure consequently

## 6 Power Module Cooling System

For power module tests at Infineon where cooling is required (for example thermal characterization, power cycling tests) typically BASF Glyscantin™ G30™ with an organic-acid-technologie (OAT) silicate-free corrosion protection is applied. A known effect in combination with HybridPACK™ Drive “Wave” FS770R08A6P2xx is a chemical reaction of the corrosion protection of the Glyscantin™ G30™ with the aluminum coolant structure (see [Figure 30](#)). This is a known effect of this coolant type and had in the tests no influence on thermal performance or pressure drop.



**Figure 30** Example of HybridPACK™ Drive Wave FS770R08A6P2xx after long time tests with G30™ fluid. The aluminum cooling structure may appear black after the test. The reaction of the organic corrosion protection is a known effect and has no negative influence on the thermal performance or aging of the module

7 Screw types and processes

7 Screw types and processes

7.1 Baseplate Mounting Screws

The power module baseplate is designed to be fixed on the cooling system by means of M4 screws. A standard screw M4x10 ISO 4762 (DIN 912 A2) with washer M4 ISO 7090 (DIN 125 A2) may be possible, depending on mechanical application constraints (for example. vibration, maximum pressure test,...). Considering production complexity and highest mechanical robustness, we recommend the following screw type to fix the baseplate to the AlMgSi0.5 cooler:

Table 7 Recommended baseplate fixing screw M4x10 ISO 7380-2 A2 (TX)

No	Description	Min.	Typ.	Max.	Remarks
1	Mounting torque	1.8 Nm	2.0 Nm	2.2 Nm	
2	Max mounting speed			400 rpm	
3	Effective length of screw in cooler	6 mm			AlMgSi0.5 cooler material. Typical M4x10 screws are used



Figure 31 Picture of recommended screw type M4x10 ISO 7380-2 A2 (typical appearance). The correct type has -2 suffix to the ISO norm and is a screw with flattened round head (German: Linsen-Flanschkopfschraube). The recommended screw type is also available with a TX20 screw head: ISO 7380-2-A2-TX

Table 8 List of suitable baseplate fixing screw types for HybridPACK™ Drive

Type	Description	Remarks
M4x10 ISO 4762 screw M4 ISO 7090 washer	Standard M4 screw and washer	Due to production complexity/cost only for lab testing recommended
M4x10 ISO 7380-2 A2	M4 screw with integrated washer	
M4x10 ISO 7380-2 A2 TX	M4 screw with integrated washer and TX20 screw head	Recommended for low to high volume production
EJOT ALtracs Plus WN5152 AP 40x12/10	Self-tapping screw (see Chapter 7.1.1 for requirements)	Recommended for high volume production

7.1.1 Alternative: self-tapping screws for baseplate mounting

Self-tapping screws are well known for use in plastic materials but are also available and established since several years for metal materials. The main advantages are the elimination of drilling and thread cutting as well

## 7 Screw types and processes

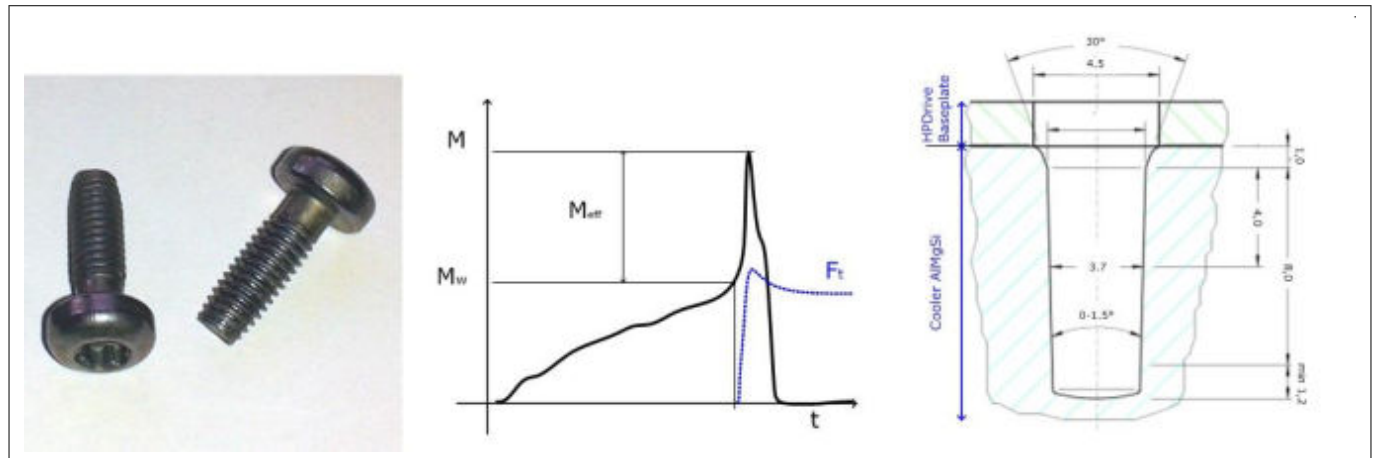
as the corresponding cleaning processes. This can lead to significant cost reduction and process time reduction for cooler manufacturing at high production volumes. Furthermore, such self-tapping screws are known to be extremely rugged during vibration stress.

The following rules and recommendations are given for the screw type:

### EJOT ALtracs Plus WN5152 AP 40x12/10

The baseplate fixing points in the cooler has to be adjusted as shown in the drawing of [Figure 32](#).

**The self-tapping screw should not be used in standard M4 threads.**



**Figure 32** Picture of the self-tapping EJOT ALtracs Plus WN5152 AP 40x12/10. A typical torque and mounting force diagram as well as drawing of the required fixing holes in the cooler. The holes can be also drilled with a standard drill tool (3.7 mm 0°).

**Table 9** Alternative baseplate fixing screw EJOT ALtracs Plus WN5152 AP 40x12/10:

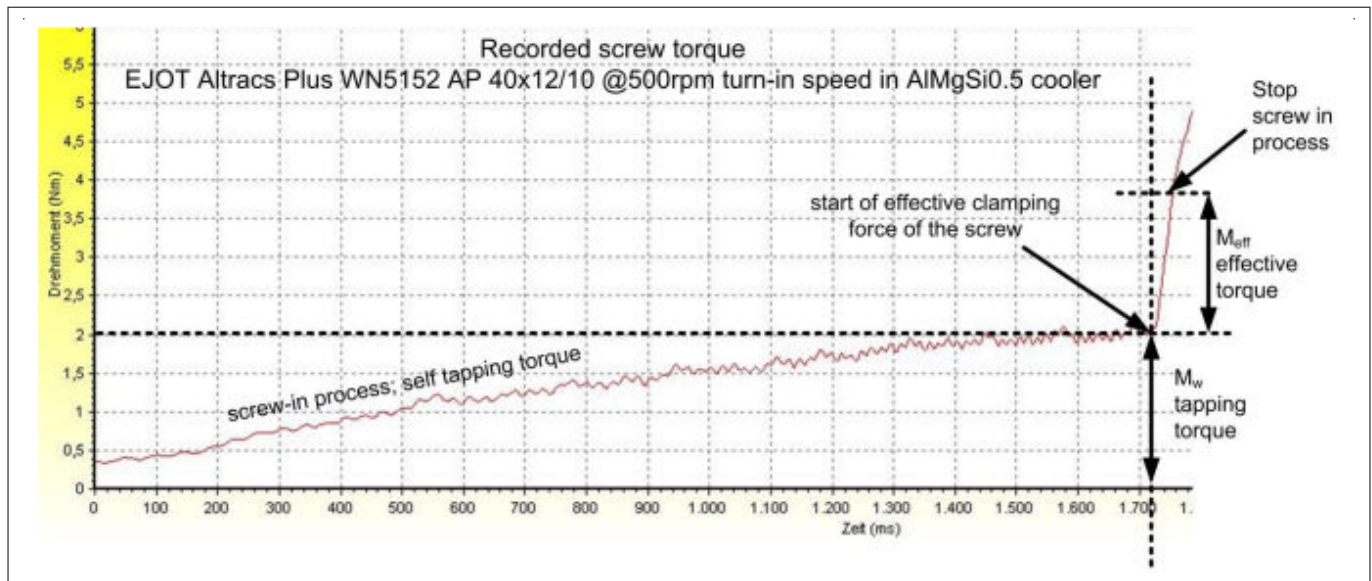
No	Description	Min.	Typ.	Max.	Remarks
1	Mounting torque M <sub>eff</sub>	1.6 Nm	1.8 Nm	2.0 Nm	Approx. M <sub>w</sub> = 2 Nm torque is required for the self-tapping. This torque is not effective for the mounting force F <sub>t</sub> . Self-tapping force strongly depends on cooler material
2	Recommended mounting speed	400 rpm		600 rpm	Lower than 200 rpm is not recommended
3	Module Clamping/Fixation during mounting		2 kN		Self-tapping screws require single step mounting and appropriate module clamping. See <a href="#">Section 7.2</a>

**Attention:** *Further important notes to avoid burrs and flakes in the final system:  
The fixing holes in the cooler must be blind holes no clearance holes.  
Only one time mounting is feasible.*

The geometry of the EJOT screw is designed such that the burrs and flakes are only generated at the bottom of the screw thread.

The screw self-tapping moment depends on the cooler (housing) material. Infineon recommends to perform mounting experiments with final cooler material. In these experiments the screw torque should be recorded. The cooler material specific self-tapping torque can be observed from the recorded data as shown in the example with the reference cooler made of AlMgSi0.5 material.

## 7 Screw types and processes



**Figure 33** Recorded screw torque in CNC machined cooler from AlMgSi0.5 material. The self tapping torque was at several experiments was in average 2.0 Nm. For this part a total screw torque of 3.8 Nm would lead to an effective screw torque of the required  $M_{eff} = 1.8 \text{ Nm}$

### 7.2 Fixation/clamping of the module during the baseplate screw process

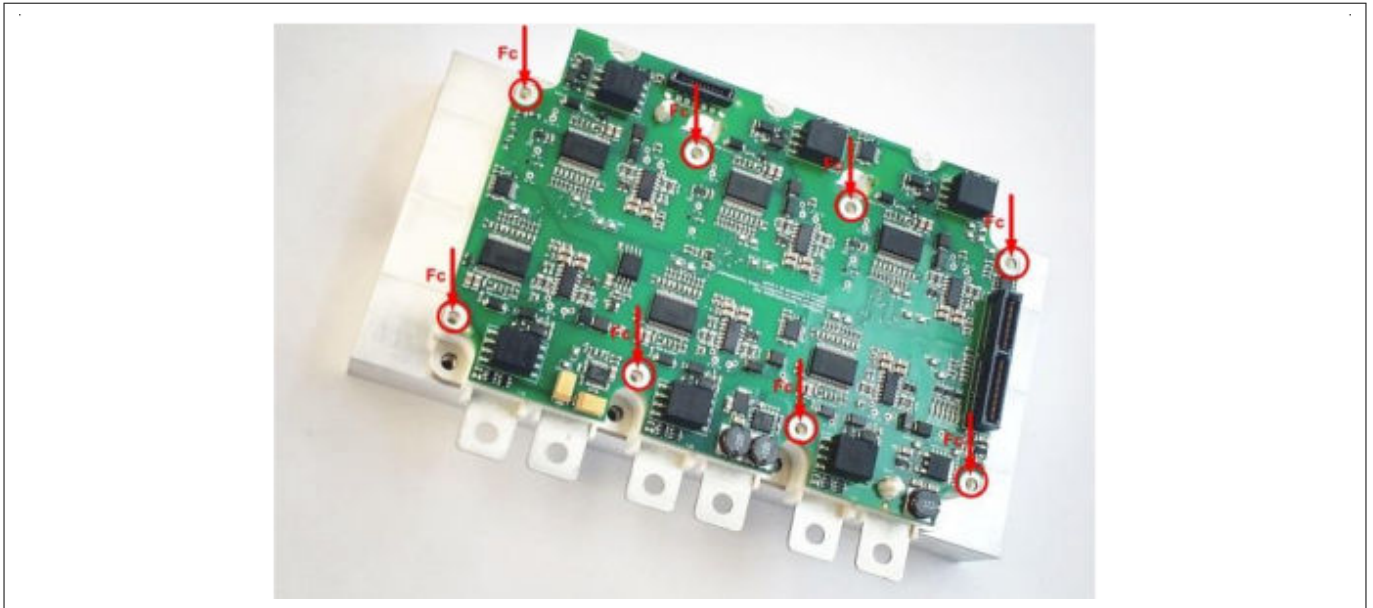
It is required to fix properly the power module to the cooler during the screwing process in order to avoid tilting of the module with a possible damage (that is plastic deformation of the baseplate).

Following methods are preferred for module fixation. Screw orders are listed in [Chapter 7.4](#):

1. Multi-Step Screw Mounting: Place screw number 1 & 2 and fix with lowest torque (this avoids only module tilting and will not to provide a high clamping force). Fix screw 3 to 8 with low torque (for example 0.4-0.6 Nm). Fix screws with final torque as specified
2. Module Clamping: After the power module (with PCB) is placed onto the cooling system the module should be clamped in z axis of the module with a total force of  $F_c = 2 \text{ kN}$  to ensure that the sealing ring is fully compressed during the screwing process. The clamping can be performed in the area where the PCB mounting domes are located (see [Figure 34](#)) or alternative 8 x 2.3 mm diameter stamps can be used to apply the force in the corresponding module housing screw holes. It is important that the PCB is not further pushed down during the clamping

Please note that the described 1<sup>st</sup> fixing method with multi step screw mounting is not suitable for self-tapping screws. For self-tapping screws it is mandatory to use proper clamping which enables a single step screw mounting.

## 7 Screw types and processes



**Figure 34** Indicated area where module can be normally clamped/hold down to the cooling system during the baseplate screw process

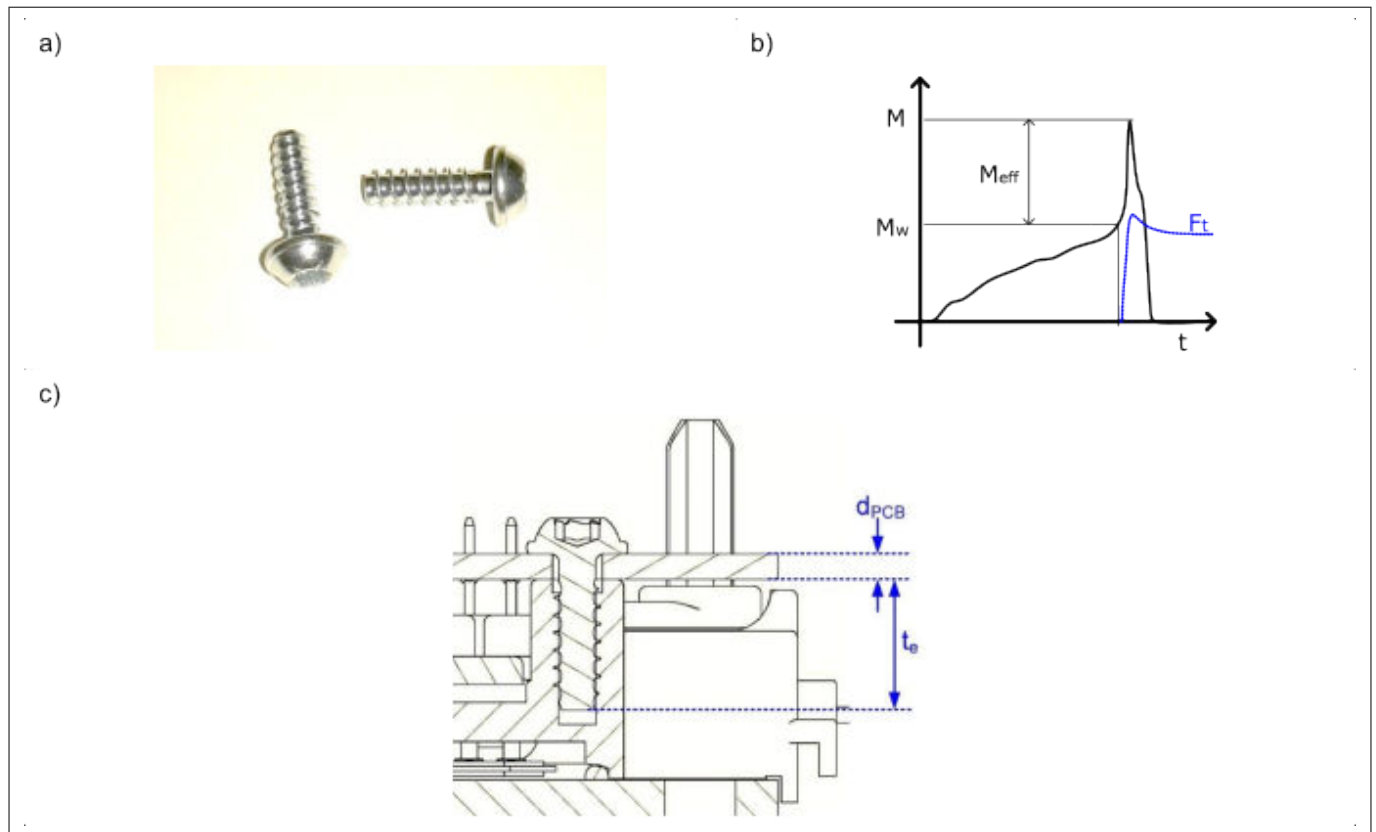
### 7.3 PCB mounting screws on the module housing

Please take note that fixing the PCB to the module with screws is recommended after the module is attached to the cooling system. The module dome was designed for the following screw type:

- - EJOT Delta PT WN5451 30x10 (for 1.6 mm PCB thickness)

The initial 1.5 mm (approximately) of the mounting stand-off, which can be seen in the drawing, serve as guidance and cannot take any force. The thread in the plastics will form itself by driving in the EJOT screws. It is important to have an appropriate minimum turn-in speed, which causes a self-heating of the screw in order to have a proper thread forming in the plastic housing without splitting and cracking. An electronically speed controlled screwdriver is the preferred aid for this purpose. Furthermore, a straight insertion of the screw into the stand-off must be observed during assembly.

## 7 Screw types and processes



**Figure 35** Picture of EJOT Delta PT typical appearance (a), basic mounting torque diagram (b), cross-section drawing of PCB screw in module dome (c)

**Table 10** PCB fixing screws EJOT Delta PT WN5451 30x10

No	Description	Unit	Min.	Typ.	Max.	Remarks
1	Mounting torque <b>Meff</b> <b>Meff + Mw</b> (for 1.6 mm PCB)	Nm	0.45	0.50 <b>1.0</b>	0.55	Mw ≈ 0.45..0.5 Nm torque is required for the self-tapping of a 10 mm screw length and 1.6 mm PCB thickness. This torque is not effective for the mounting force Ft and may change for different screw length and PCB thickness
2	Recommended mounting speed	rpm	400		600	Lower than 200 rpm is not recommended
3	Screw length in the module dome (te)	mm	6		9	Typical screw length 10 mm for 1.6 mm thick PCBs

### 7.4 Screw Orders (Baseplate and PCB)

The screw order as shown in [Figure 36](#) is very important in order to avoid damage on the part. Please see [Chapter 7.1](#) and [Chapter 7.3](#) for specification of screw type and torque as well as required processes like module fixation/clamping during the baseplate screw process.



7 Screw types and processes

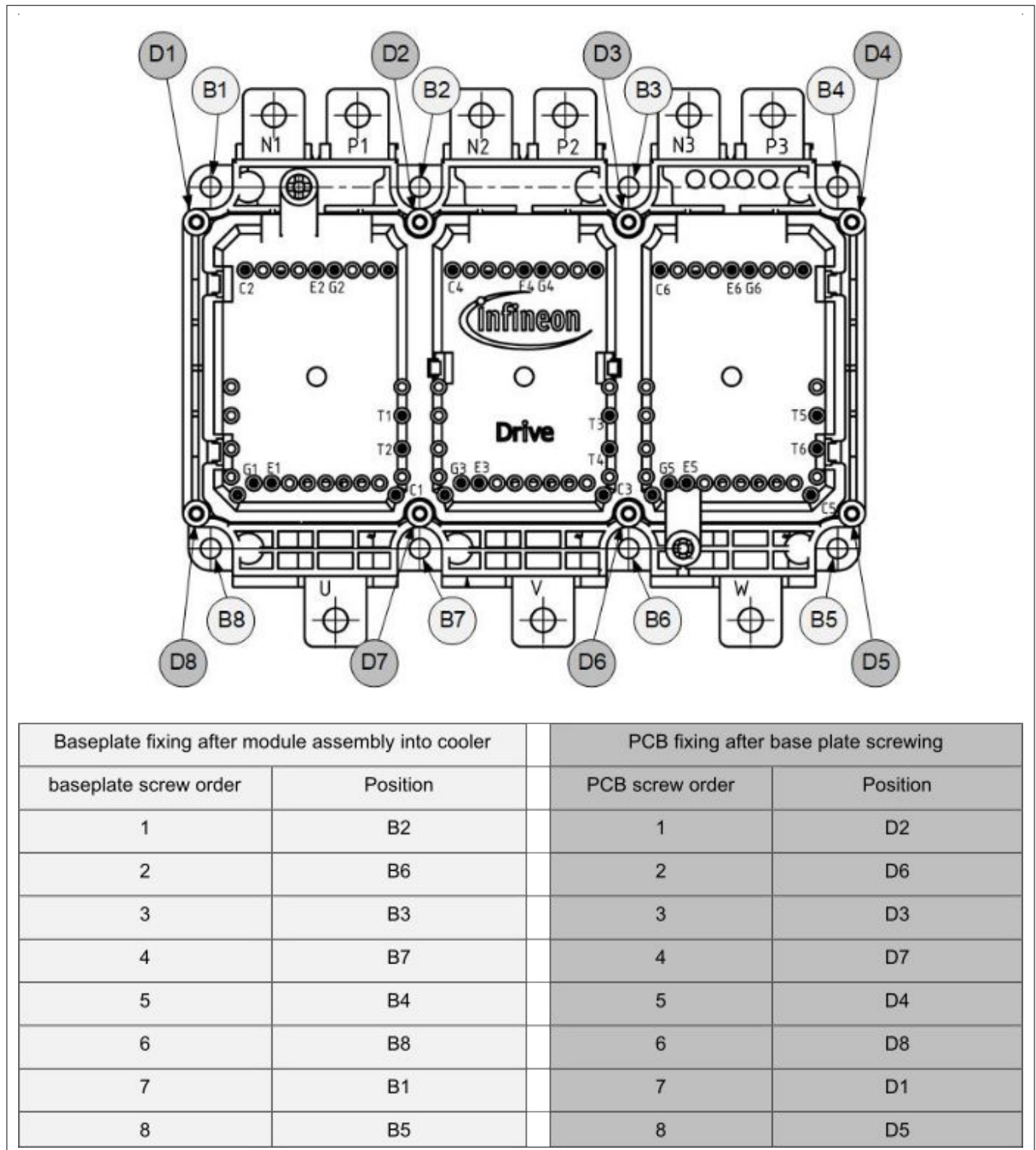


Figure 36 Screw order for baseplate and PCB screws

8 Connecting to the Power Terminals

8 Connecting to the Power Terminals

8.1 Mounting Options

The copper power tabs are tin-plated and so are well suited for screw type connections including clinch processes as well as welding processes.

Several mounting options are suitable and some examples are illustrated in Figure 37 where the HybridPACK™ Drive is connected to a DC-link capacitor. It is possible to have the mounting order:

screw – power tab – busbar – nut (Figure 37 Opt. 1),

nut – power tab – busbar – screw (Figure 37 Opt. 2),

In the examples the busbar is always a single part/sheet, but also two or three busbar sheets are possible to be mounted in the stack and so it is also possible to have instead of the screw head/nut only busbars as a direct interface to the power tabs:

For example screw – busbar - power tab – busbar – nut.

Further beneficial mounting options are given by the use of self clinching nuts. Standard M4 self clinching nuts can be used in mounting holes designed for M5 screws. So, a M4 self clinching nut can be pressed into the power tab hole and busbars can be connected with a M4 screw (preferred the same screw type as used for mounting the baseplate to the cooling system). In case the mounting order is reversed it is possible to use a M5 self clinching nut in a busbar and to use a M5 screw on the power tab side as counterpart (that is mounting option 4 in Figure 37 and Table 11).

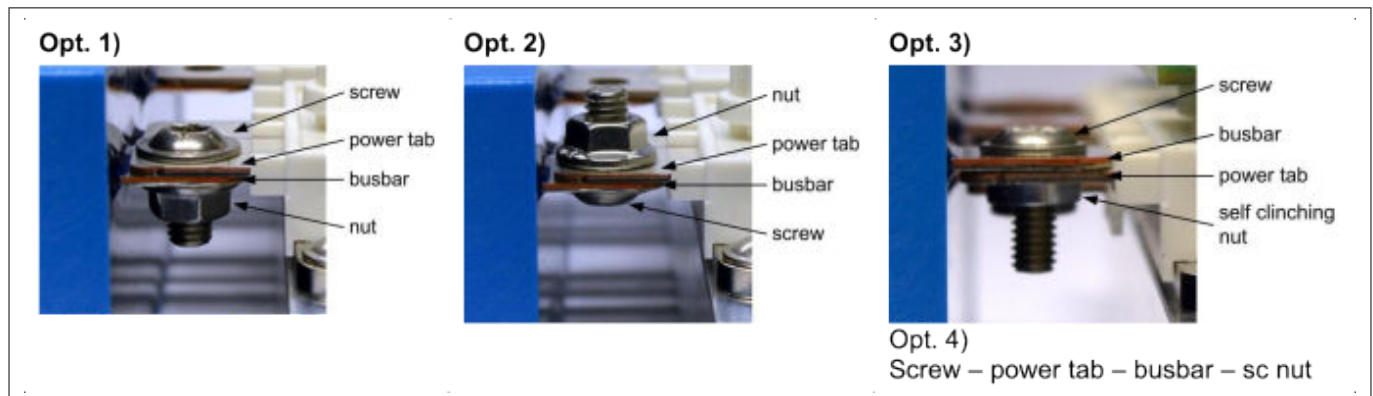


Figure 37 Examples of power tab connection options

Table 11 Power tab mounting options and recommended screw torque

Mounting Option	Screw/Nut type	Mounting torque			Remarks
		Min.	Typ.	Max.	
1,2	M5 ISO 4762 screw (M5 ISO 7090 washer) M5 ISO4032 nut	3.6 Nm	4.0 Nm	4.4 Nm	Low volume production & lab testing
1,2	M5 ISO 7380-2-A2-(TX) screw M5 ISO6923 nut	3.6 Nm	4.0 Nm	4.4 Nm	Low volume production & lab testing

(table continues...)

## 8 Connecting to the Power Terminals

**Table 11 (continued) Power tab mounting options and recommended screw torque**

Mounting Option	Screw/Nut type	Mounting torque			Remarks
		Min.	Typ.	Max.	
3	M4 ISO 7380-2-A2-(TX) M4 self-clinching nut For example “TR-S-M4-1” PEM “S-M4-0ZI”	1.8 Nm	2.0 Nm	2.2 Nm	Low to high volume production & lab testing
4	M5 or M4 ISO 7380-2-A2-(TX) screw M5 or M4 self-clinching nut in busbar/capacitor (depending on busbar/capacitor design)	3.6 Nm	4.0 Nm	4.4 Nm	Low to high volume production & lab testing
5	welding	-	-	-	High volume production

The screw types in table give only a rough overview. Different types may be possible with same mounting torque in case the base of head or the spot face are comparable to the given types and the busbar material is suitable for such mounting.

### 8.1.1 Additional Information for Welding Processes

The HybridPACK™ Drive power modules without an ‘B’ in the ending of the type designation (for example FS820R08A6P2B) indicates a module frame, which has no mounting hole in the power tab. Examples of these module types can be seen in [Figure 38](#). These plain power tabs of these products can be connected by means of welding processes. The welding process with its specific parameters have to be evaluated by the customer. A general recommendation to the process type or parameters is not possible as it is also depending on the companion material of the busbar and the available welding equipment at the customer. Studies of institutes give a comprehensive guide for the pre-selection of applicable welding process types and can be found for example at [\[1\]](#) table 3.3 or [\[3\]](#).

Material property of the power tabs for selecting the welding process:

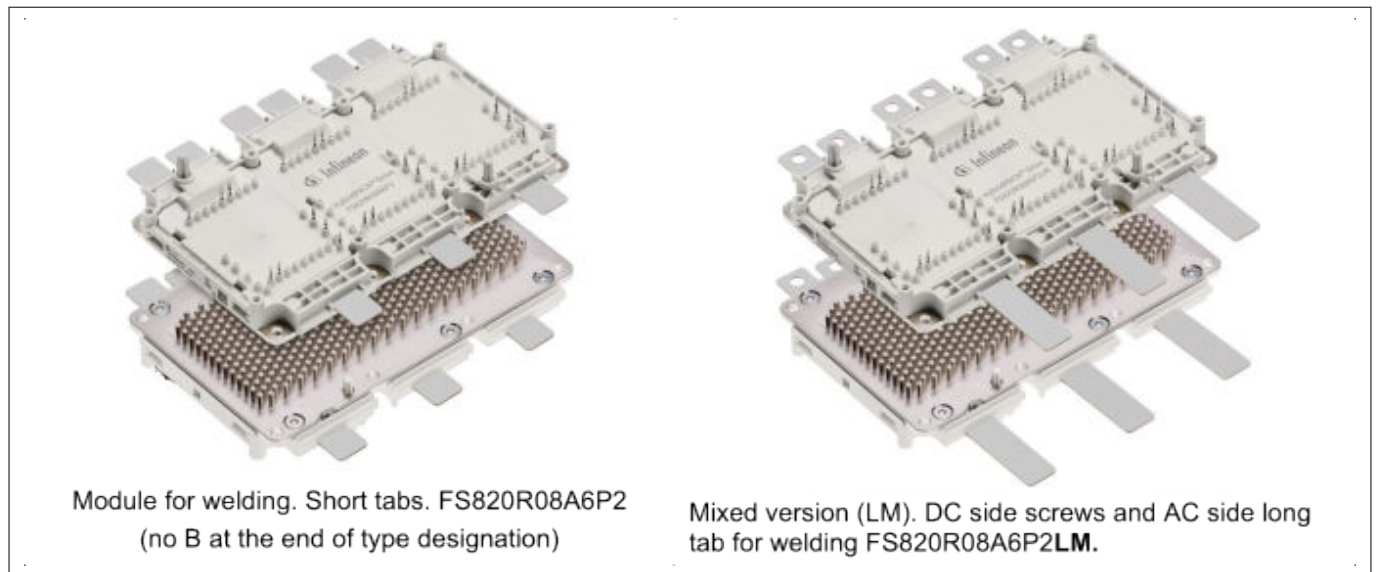
Copper Type: oxygen free copper type

Plating: galvanic tin

Please note that the power module frame has to be limited to 150°C during the welding process.

A laser welding machine supplier, which has already successfully performed pre-tests on the HybridPACK™ Drive power tabs can be found under [\[4\]](#).

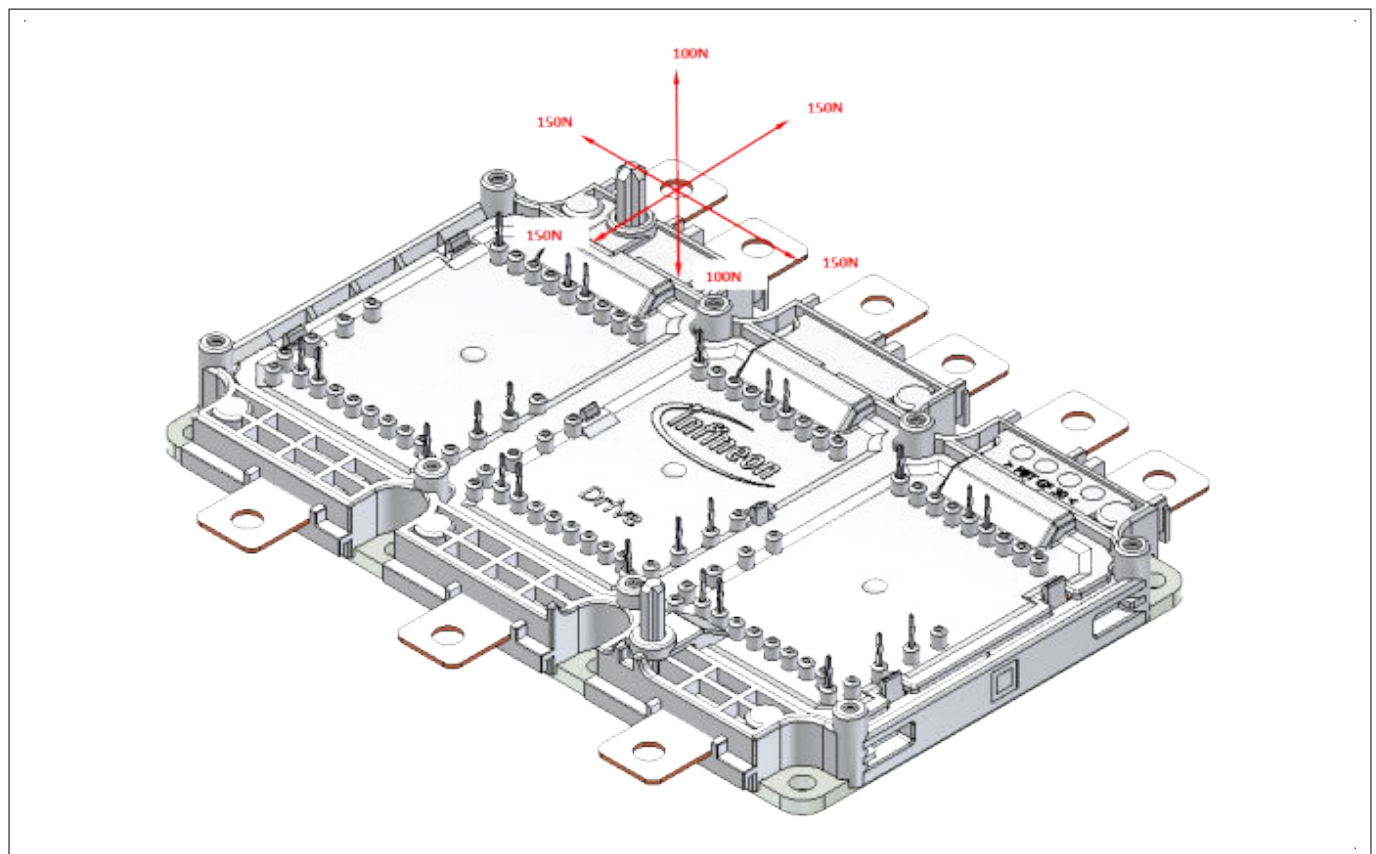
## 8 Connecting to the Power Terminals



**Figure 38** HybridPACK™ Drive Modules suitable for welding

### 8.2 Forces on Power Tabs

The system mounting should be designed in a way that minimal force is applied on the power tabs of the power module. The tested and allowed forces on the power tabs are given in [Figure 39](#). The specified force shown on one single tab is allowed simultaneous at all power tabs.



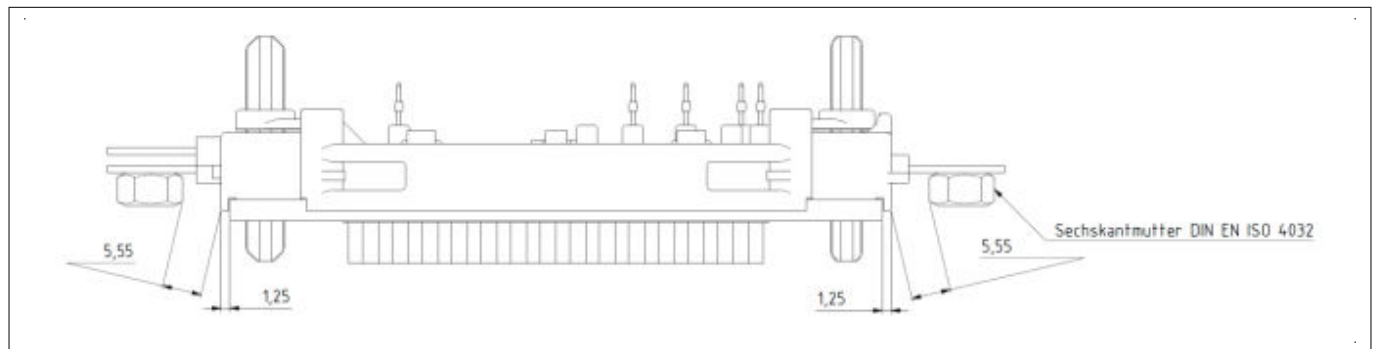
**Figure 39** Allowed forces on the power tabs

## 9 System Assembly Clearance & Creepage Distances

### 9 System Assembly Clearance & Creepage Distances

The datasheet of the HybridPACK™ Drive specifies clearance & creepage distances of the product itself. It is obvious that external parts can modify these distances in the system and so it is mandatory to check clearance and creepage distances of the entire final system assembly.

Figure 40 shows an example where the power terminals are connected with screws by means of a standard hexagonal nut.



**Figure 40** HybridPACK™ Drive with a hex nut (ISO 4032) for the power tab connection. The clearance shown in the drawing is uncritical as it is higher than the minimum product clearance itself of 4.5 mm

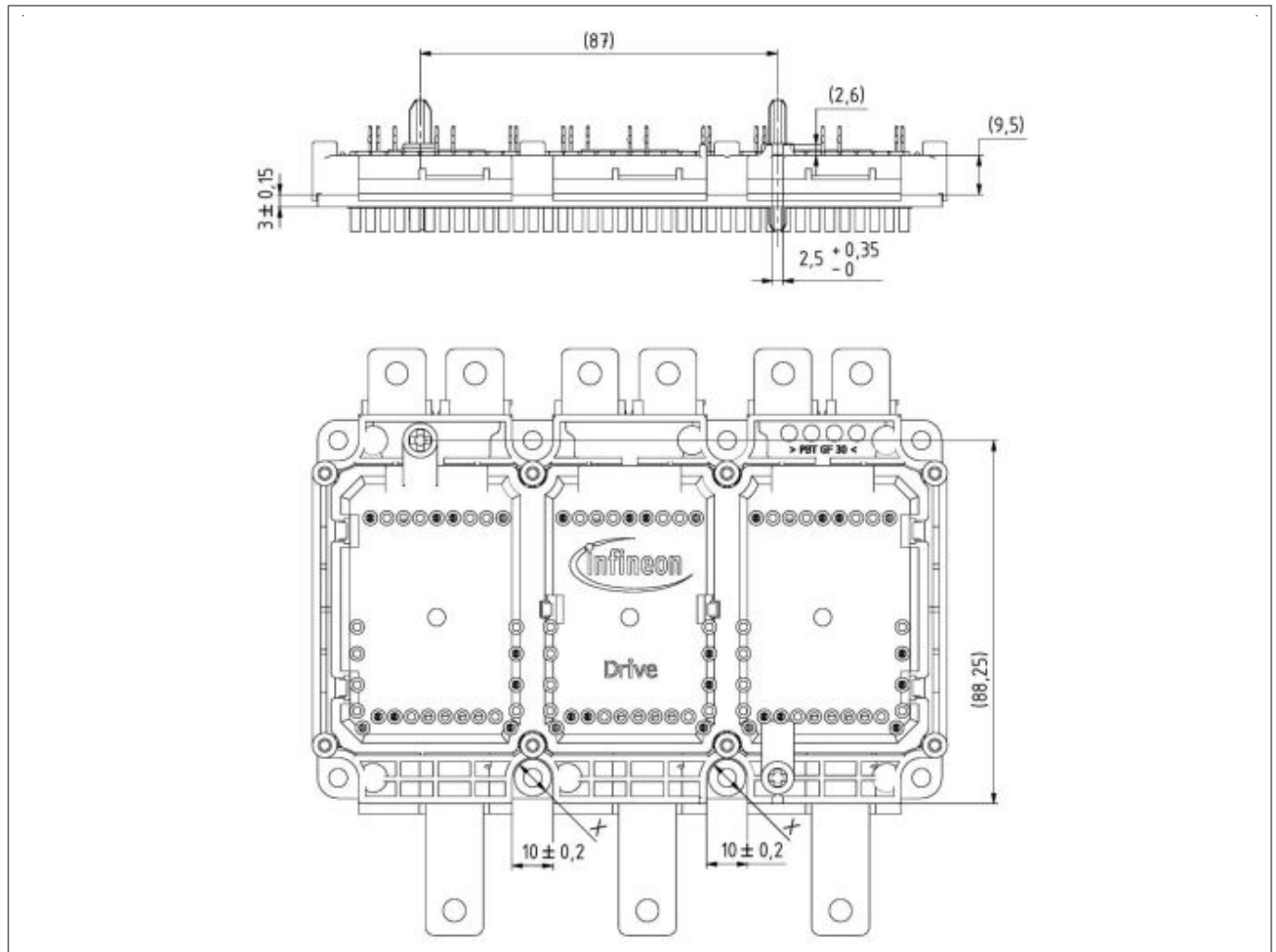
Even considering a fixing tolerance of  $\pm 0.25$  mm the clearance distance shown above is higher than the minimum clearance in the module product itself, which is 4.5 mm according to the product datasheet.

**Note:** *The distance to the cooler, housing, (all external parts), must also be checked. For example, the distance from the hex nut to the cooler. This can be done only on system level. Appropriate keep out or covering with isolating parts (plastic) can typically increase critical distances in the system design.*

## 10 Phase Current Sensor Integration

### 10 Phase Current Sensor Integration

Figure 41 show mechanical features of the HybridPACK™ Drive which can be used for design of phase current sensor solutions. The features are shown exemplarily with the FS820R08A6P2LB product derivate (PinFin Baseplate, Frame with Long AC Tabs) but are same for HybridPACK™ Drive with other baseplate or frame options. The shown elements can be applied also for other products in the HybridPACK™ Drive family.



**Figure 41** Mechanical features of the HybridPACK™ Drive for design of phase current sensor solutions

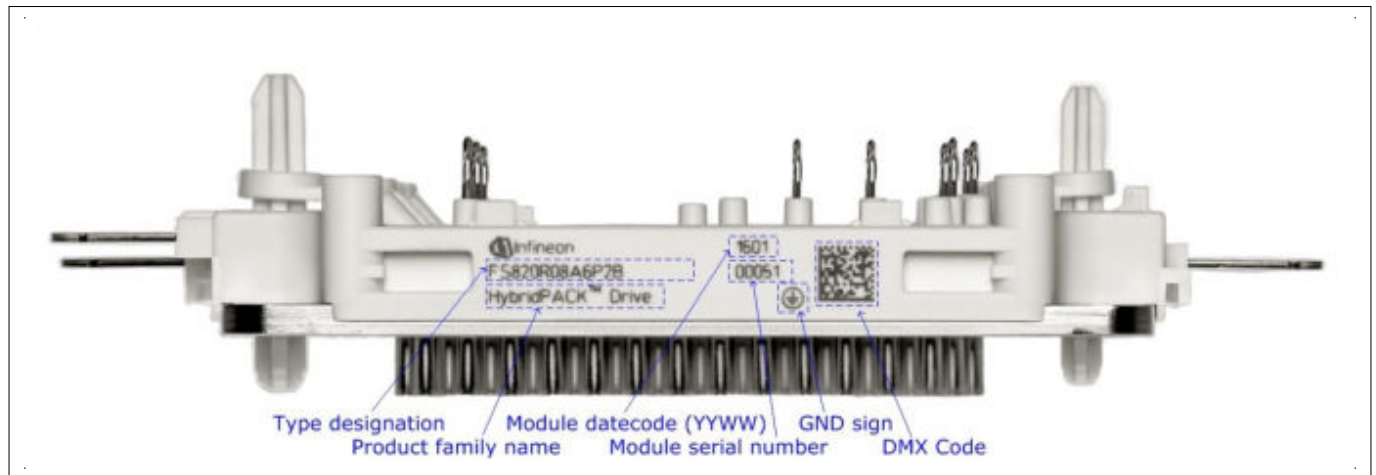
Sensors often uses the module baseplate screws for mounting, especially in the indicated areas with (X). It is recommended to design the contact face (X) of the current sensor with a similar size as the recommended baseplate screw head. Typically a 9 mm contact face is chosen, which can withstand the allowed maximum mounting torque of the baseplate screws.

## 11 Traceability, Data Matrix and Part Markings

### 11 Traceability, Data Matrix and Part Markings

Traceability of materials, equipment and processes is a must for key automotive components. Therefore, the HybridPACK™ Drive is produced at Infineon in a seamless traceability environment. Nevertheless, traceability must not be aborted after the modules are shipped to the customer and assembled into the inverters. In order to reap the full benefit of a traceability chain, the unique module number (module ID) should be linked to the inverter ID at customer side.

Figure 42 shows the module labels and where to find the DMX-code necessary for tracing the module-ID.



**Figure 42** Picture of module labels (typical appearance). For a seamless traceability the DMX code which is the module ID (or alternative the type designation + date code + serial number) should be recorded and linked to the inverter ID

The DMX code is readable with all professional data matrix code scanners compatible to the IEC24720 and IEC16022 standard.

Engineers in the lab can also use free DMX code reader apps on their smartphones.

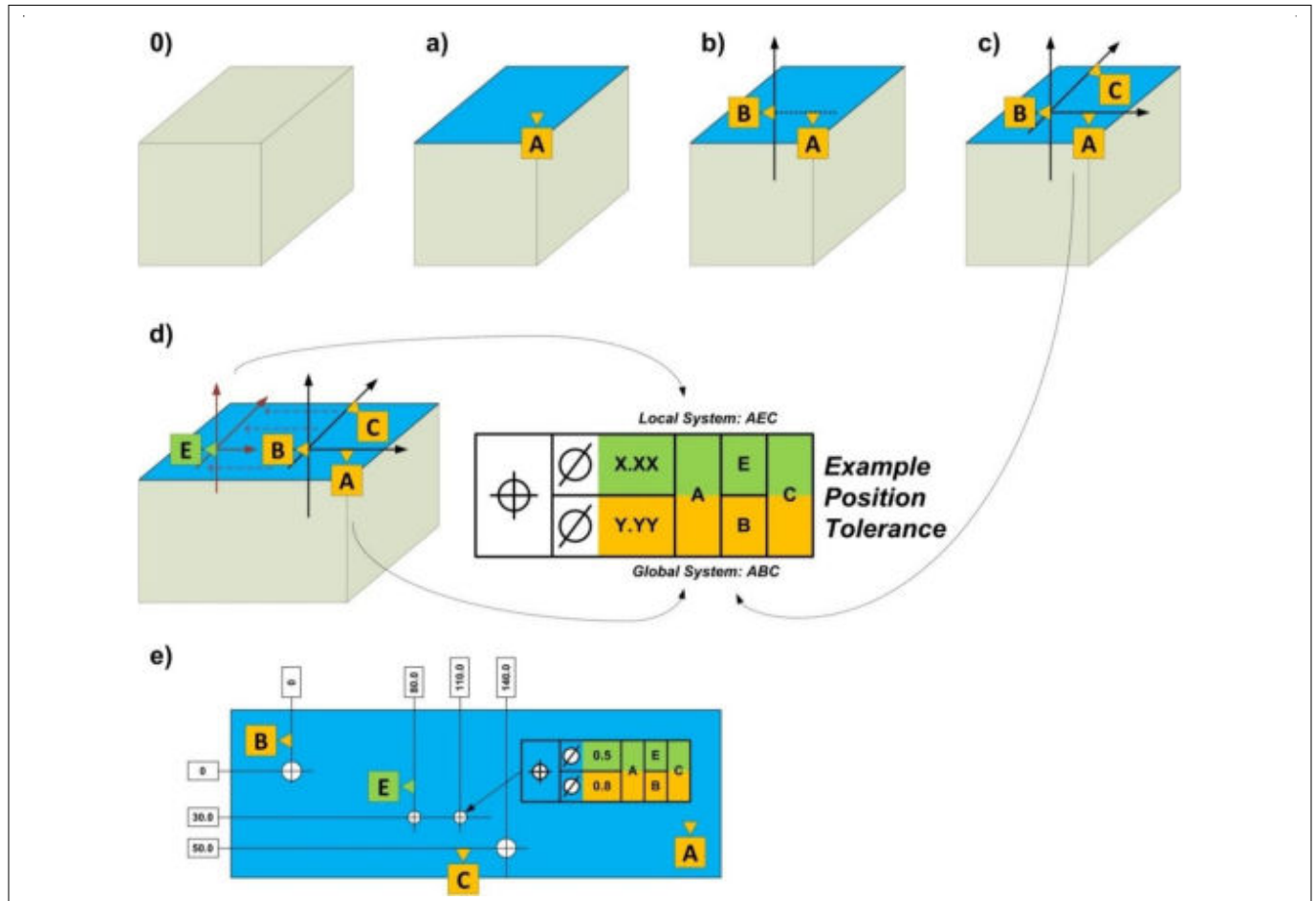
Android: QR Extreme, QR Droid, and many others supporting data matrix codes.

iOS: i-nigma QR, and many others supporting data matrix codes

12 Technical Drawing

12 Technical Drawing

12.1 Basic Explanation Coordinate System



**Figure 43** Technical drawing with global and local coordinate systems as utilized by the HybridPACK™ Drive

The drawing of the HybridPACK™ Drive utilizes a global coordinate system, which is defined by the X-Pins and is mainly used for pre-alignment. The position of all elements like signal pins, mounting domes, etc. are given in this global system and makes it simple for designing companion parts like the PCB, busbar and housing.

Furthermore, important interfaces like mounting domes, signal pins are also defined in local coordinate systems, where position tolerances can be defined more precise.

With such a drawing, the companion parts will be typically designed with respect to the relative tolerances from the corresponding local systems and the positioning of the companion part to the power module can be best designed/checked in the common global coordinate systems.

Figure 43 show the basics of technical drawings with global and local coordinate systems. A coordinate system is here defined by three elements. The 1<sup>st</sup> element defines a surface (see Figure 43a). The position where the line of the 2<sup>nd</sup> element vertical crosses the surface of the 1<sup>st</sup> element defines the origin (see Figure 43b). A further line from the 3<sup>rd</sup> element to the origin defines the rotation of the final 3D Cartesian coordinate system (see Figure 43c).

An additional local coordinate system can be defined when one or more elements are shifted. In the example of Figure 43d, the 2<sup>nd</sup> element (B) is replaced by element (E). The result is a local coordinate system, which is



---

## 12 Technical Drawing

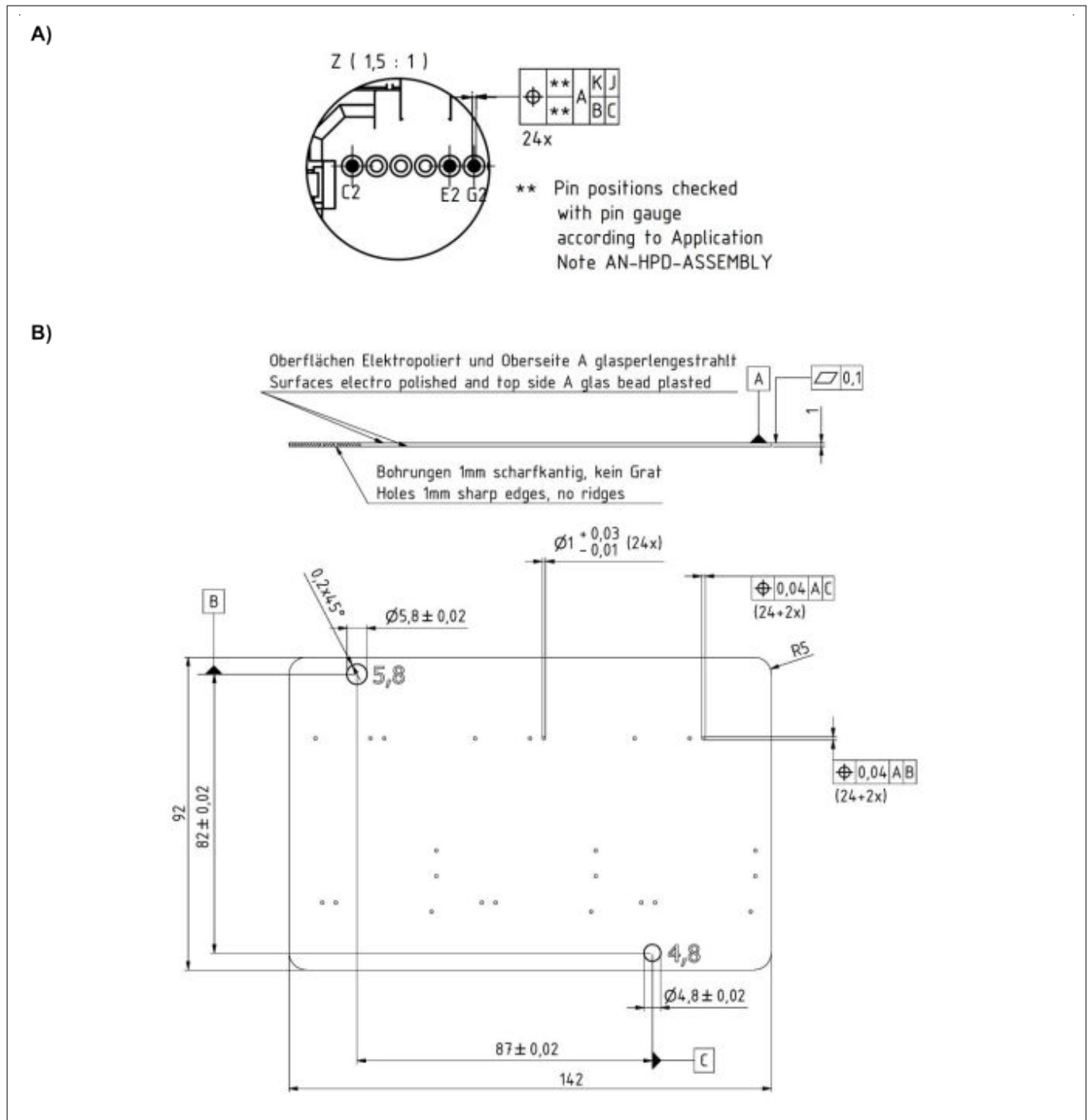
linear transformed to the global system. These local systems enables a comprehensive way to define relative tolerances of for example pin positions, mounting domes, etc.

### 12.2 Pin Position and Pin Gauge

For power modules which have in product specification a note as shown in [Figure 44A](#), a pin gauge test is implemented in the production line at Infineon. The specification of this pin gauge is shown in [Figure 44B](#) for pinning as implemented in FS660R08A6P2xx. For other signal pin pattern like for the SIC MOSFET modules the positions of the signal holes are placed but hole size spec will remain same. At power module production the parts are tested if pin gauge can be applied to the module. A low force in module z-direction on the gauge are allowed (typical up to 10..20 N, which is uncritical for the module and its pins). When the pin gauge can be smoothly attached to the module the test is rated as PASS and can be seen as a test if customer can later smoothly assembly their PCBs on the power module.

The basic description of the test and pin gauge specification is placed only for information how these modules are tested at Infineon production. It is not needed at customer side to test power modules at incoming inspection again.

12 Technical Drawing



**Figure 44** Extract of datasheet regarding pin positions (A). Specification of Infineon pin gauge for power module production test (B). Hole pattern can be adjusted for other signal pinning with same hole size spec (e.g. SIC MOSFET Module)

---

## 13 Storage and Transport

### 13 Storage and Transport

During transport and storage of the modules, extreme forces through shock or vibration have to be avoided as well as extreme environmental influences.

Storage of the modules at the limits of the temperature specified in the datasheet is possible, but not recommended. The recommended storage conditions are described in [\[8\]](#).

Pre-drying of the power module prior to the press-in process (as is recommended for molded discrete components, such as microcontrollers, TO-cases etc.) is not required for the HybridPACK™ Drive power modules.

## 14 Power Module Appearance

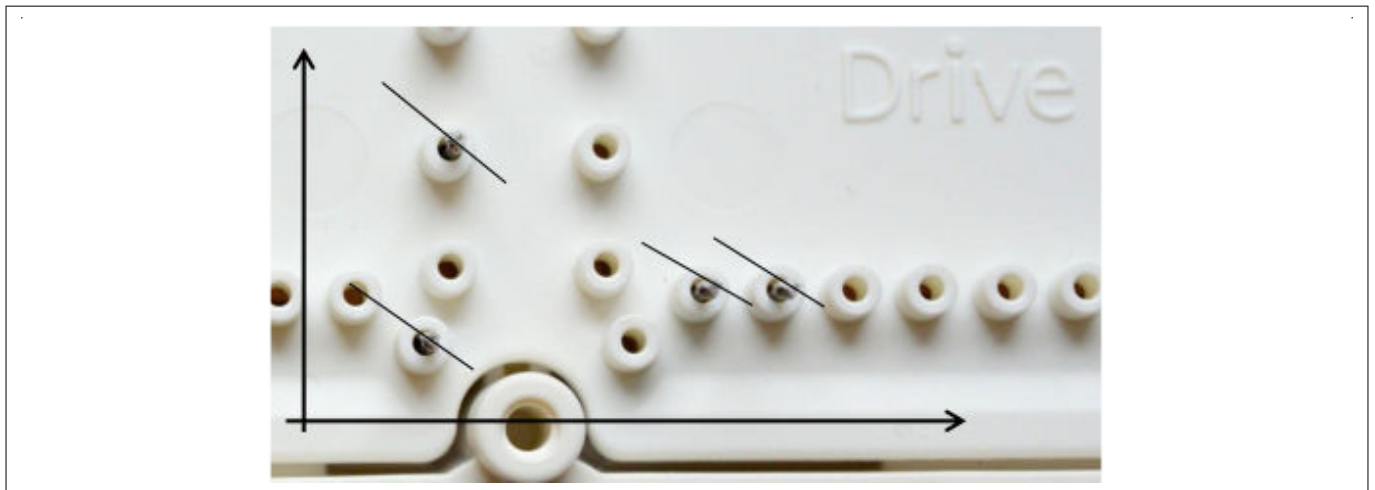
### 14 Power Module Appearance

This chapter explains frequent questions about the typical power module appearance.

#### 14.1 Pin Rotation

The position tolerance is an important value and ensures that a PCB designed according to the recommendations fits to the power module. The positions of the pins are clearly specified in the product datasheet.

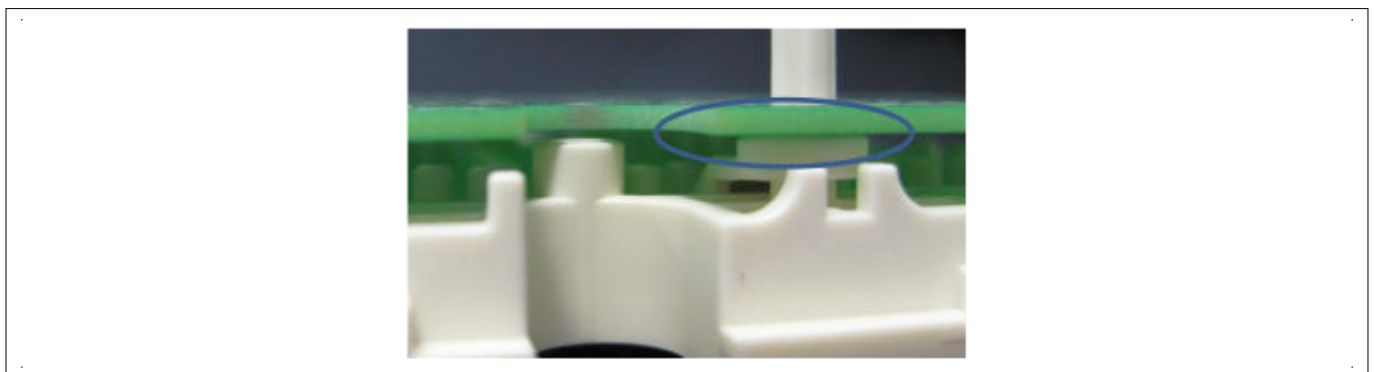
The pin rotation is not fixed as the interface (PCB via) is totally symmetric. A pin rotation is clearly visible due to the asymmetric pin geometry (that is three contact pressfit pin). An example is shown in [Figure 45](#), where the rotation is indicated. Typically about 45° pin rotations can be seen. Nevertheless, different angles may occur in the final product and it is no reason for an objection and has no influence on the final contact quality.



**Figure 45** Pins are not symmetrical (three contact pressfit pins) and so a rotation angle is visible. Different angles may occur in final product but are uncritical for the contact quality and is no reason for an objection

#### 14.2 Module Lid to PCB Distance

The power module lid is also guided with the module x-pins. In the area of the x-pins the module lid is in contact to the PCB even before it is pressed down. After final assembly this ensures that the lid has contact to the PCB and so avoids noise during typical application vibration profiles. The force of the lid to the PCB is low and uncritical for the PCB.

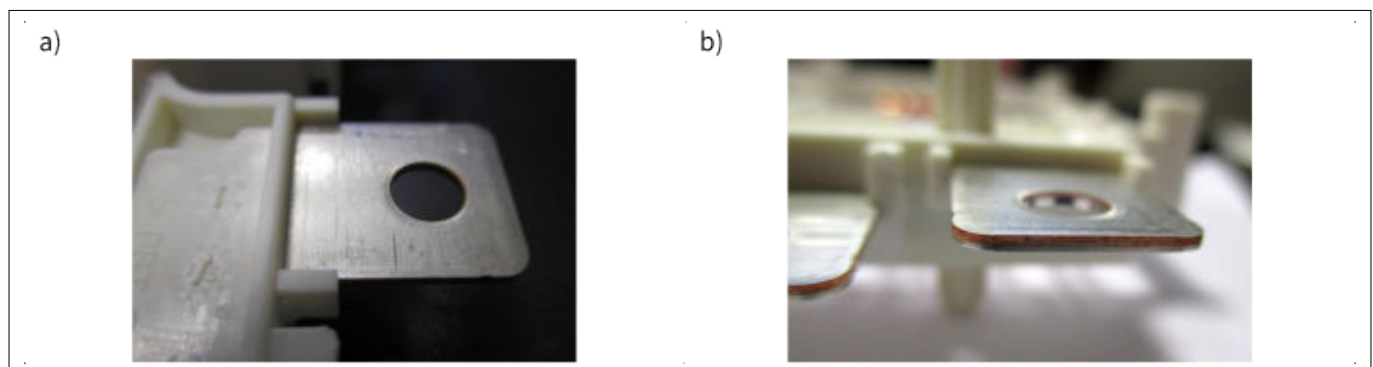


**Figure 46** The module lid has contact to the PCB before it is pressed onto the power module. This ensures a contact after the PCB is assembled and avoids noise during vibration profiles

## 14 Power Module Appearance

### 14.3 Power Tab Tin Plating

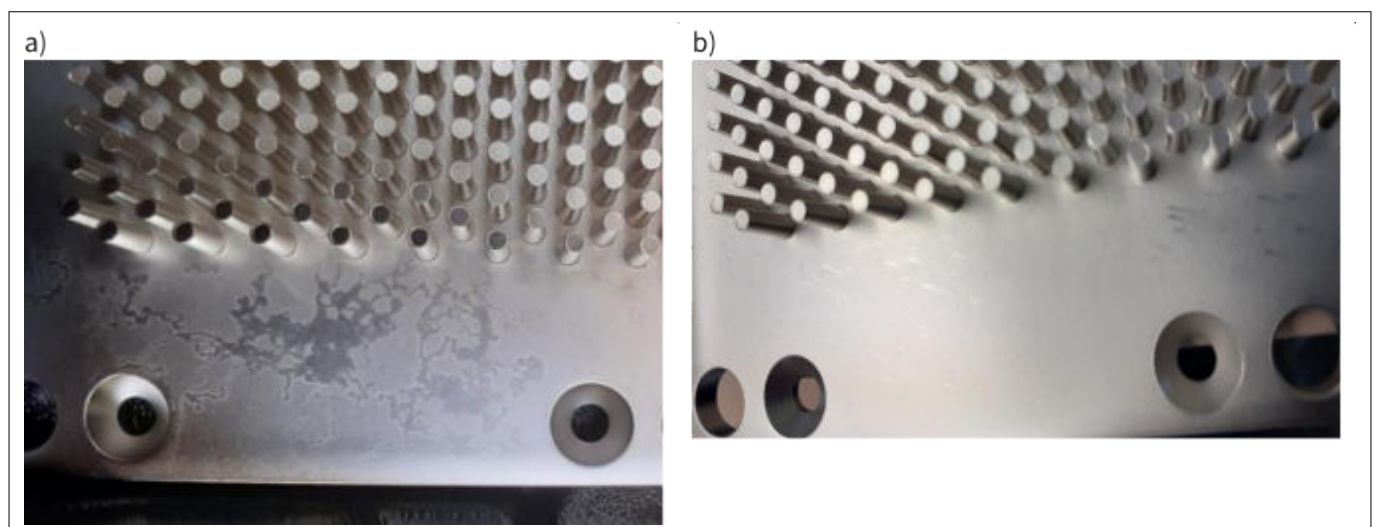
The power tabs are made of copper with a tin plating. The plating has the role to avoid visual discoloration and oxidation of the copper between power module production and the mounting processes. After assembly, the tin plating has no function and the contact resistance is the same as an un-plated pure copper power tab. In order to provide the maximum possible compatibility to various connecting techniques like screw type connections, clinching and welding, it is mandatory to make the plating as soft as possible. Due to the desired compatibility and the required softness, visible scratches (see [Figure 47a](#)) and/or not completely over-plated edges due to the stamping process (see [Figure 47b](#)) are of logical consequence and is no reason for an objection as it does not influence the product performance or quality.



**Figure 47** Typical appearance of the copper power tabs, which have a very soft tin plating and provides maximum compatibility to different mounting processes

### 14.4 Baseplate Surface

A typical appearance of the baseplate surface is a so called “marbling” or “white spots” structure. This structure can be observed after the galvanic nickel and its cleaning process of the baseplates. The roughness of the baseplate, the chemical structure as well as the thickness of the Ni layer is not different to baseplates where this structure is not visible by naked eye. Such an appearance as shown in the [Figure 48](#) is a normal appearance and is no reason for an objection as it does not influence the product performance or quality.



**Figure 48** Typical appearance of power module baseplate surface with a “marbling” or “white spots” structure

## 15 References

---

### 15 References

The referenced application notes can be found at <http://www.infineon.com>

- [1] Copper Development Association, "Welding copper and copper alloys", [http://www.copper.org/publications/pub\\_list/pdf/a1050.pdf](http://www.copper.org/publications/pub_list/pdf/a1050.pdf)
- [2] Harting Technology Group, <http://www.harting.com>
- [3] Deutsches Kupferinstitut, "Schweißen von Kupfer und Kupferlegierungen" <http://copperalliance.de/docs/librariesprovider3/i012-mit-info-deutsches-kupferinstitut-pdf>
- [4] Trumpf Laser- und Systemtechnik GmbH, <https://www.trumpf.com>
- [5] Alpitronic GmbH, <http://www.alpitronic.it>
- [6] Infineon Technologies AG, "HybridPack-Drive Cooler EQ V08"
- [7] Erwin Quarder Gruppe, <https://www.quarder.de/thermomanagement-fuer-batterietechnik/hybridpack-drive-kuehler/>
- [8] Infineon Technologies AG, "Storage of Products Supplied by Infineon Technologies", Application Note, V10.0

## Revision history

### Revision history

Document version	Date of release	Description of changes
0.9	2015-02	Initial DRAFT Version
0.91	2015-11	Revised: <ul style="list-style-type: none"> <li>Updated template and typer corrections</li> <li>PCB reflow note added 3.1</li> <li>Revised hole spec for pressfit holes (for early prototype modules with date code before 1549 it is recommended to use slightly larger holes type 1.1 mm) 3.1</li> <li>PCB mounting screws chapter revised 3.5</li> <li>Cooler mounting holes added 4.2</li> <li>M4 baseplate mounting screws ISO norms added 4.3</li> <li>Power module appearance chapter added 9</li> </ul>
1.0	2016-04	Revised: <ul style="list-style-type: none"> <li>Baseplate fixing screw type with TX20 head added 4.3</li> <li>Revised part markings chapter 7</li> <li>Fig 5 description corrected</li> <li>Updated pictures</li> <li>Updated chapter 5 (power tab connecting)</li> <li>Removed NDA</li> </ul>
1.1	2016-11	Revised: <ul style="list-style-type: none"> <li>PCB X-Pin holes: added remark for plated, unplated holes</li> <li>PCB fixing screw updated torque</li> <li>Technical drawing of sealing area added</li> <li>Remark for cooler X-pin hole depth added</li> <li>Added module fixation during baseplate screw process</li> <li>Added chapter technical drawing explanation</li> </ul>
1.2	2017-10	Revision: <ul style="list-style-type: none"> <li>Appnote valid for HPDrive Module family FSxxxRxxA6P2xx &amp; FSxxxRxxA6T4xx</li> <li>Added cooler design for FS770R08A6P2</li> <li>PCB maximum hole size for x-pins removed (optional feature)</li> <li>PressFIT tool with wider tolerance, which provide worst case an uncritical push force on the signal pins</li> <li>Added information for self tapping baseplate fixing screws</li> <li>Added information for reading DMX code</li> <li>Added chapter: Hints for Phase Current Sensor Integration</li> <li>Minor revised wording</li> </ul>
1.3	2018-10	Revisions: <ul style="list-style-type: none"> <li>Enlarged guiding holes in PCB for seamless assembly</li> <li>Optimized press tool (new drawing)</li> <li>Maximum allowed press-in force. Explanation about press-in speed</li> <li>Recommended optimized press-in stop criteria</li> <li>Reference cooler for FS770R08A6P2xx adjusted to fit for final parts</li> </ul>

## Revision history

Document version	Date of release	Description of changes
1.4	2019-05	Revisions: <ul style="list-style-type: none"> <li>Revised document chapter structure including minor revisions in wording and updated pictures in entire document</li> <li>Added new chapter for soldering modules</li> <li>Added new chapter PCB design hints for high thermal cycle robustness</li> <li>Added new section cooling fluid, within chapter power module cooling system</li> <li>Added new section pin position and pin gauge in chapter technical drawing</li> </ul>
1.4b	2019-09	Revisions: <ul style="list-style-type: none"> <li>Technical content not changed from revision 1.4</li> <li>List of power modules incl order number in scope of this appnote added (see section 1.1)</li> <li>Broken document cross-references corrected</li> </ul>
1.4c	2020-03	Revisions: <ul style="list-style-type: none"> <li>Technical content regarding assembly not changed from revision 1.4</li> <li>Added section and pictures for typical appearance of module baseplate</li> <li>Gauge drawing corrected to match calibration specification of gauge</li> <li>Corrected typers</li> </ul>
1.4d	2022-05	Revisions: <ul style="list-style-type: none"> <li>Added additional design/supplier of the sealing ring</li> </ul>
1.5	2024-01-23	<ul style="list-style-type: none"> <li>Template update; update of storage condition and information about Quarder cooler added</li> </ul>



## Trademarks

All referenced product or service names and trademarks are the property of their respective owners.

**Edition 2024-01-23**

**Published by**

**Infineon Technologies AG**

**81726 Munich, Germany**

**© 2024 Infineon Technologies AG**

**All Rights Reserved.**

**Do you have a question about any aspect of this document?**

**Email: [erratum@infineon.com](mailto:erratum@infineon.com)**

**Document reference**

**IFX-fpg1699624248399**

## Important notice

The information contained in this application note is given as a hint for the implementation of the product only and shall in no event be regarded as a description or warranty of a certain functionality, condition or quality of the product. Before implementation of the product, the recipient of this application note must verify any function and other technical information given herein in the real application. Infineon Technologies hereby disclaims any and all warranties and liabilities of any kind (including without limitation warranties of non-infringement of intellectual property rights of any third party) with respect to any and all information given in this application note.

The data contained in this document is exclusively intended for technically trained staff. It is the responsibility of customer's technical departments to evaluate the suitability of the product for the intended application and the completeness of the product information given in this document with respect to such application.

## Warnings

Due to technical requirements products may contain dangerous substances. For information on the types in question please contact your nearest Infineon Technologies office.

Except as otherwise explicitly approved by Infineon Technologies in a written document signed by authorized representatives of Infineon Technologies, Infineon Technologies' products may not be used in any applications where a failure of the product or any consequences of the use thereof can reasonably be expected to result in personal injury.