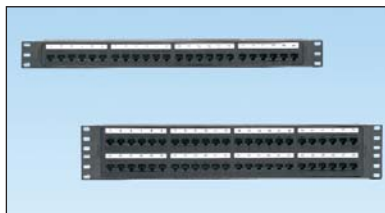


# NetKey® Category 6 All Molded Punchdown Patch Panels

# PANDUIT®

## DATA SHEET

Punchdown patch panels shall be a molded design made of polymer material and mount to standard racks and cabinets. Punchdown modules shall meet Category 6/Class E performance levels and terminate unshielded twisted 4-pair, 22 – 26 AWG, 100 ohm cable. Punchdown tool properly terminates each conductor for optimum performance. Universal T568A and T568B color-coded wiring schemes included. Patch panels shall be available in standard density 24 and 48-port configurations. Patch panels include pre-numbered labels with writable surface on back. Additional numbering engraved in the front and back of the panel.



### technical information

<b>Electrical performance:</b>	Meets all TIA/EIA-568-C.2 Category 6 and ISO 11801 2nd Edition Class E channel requirements at swept frequencies up to 250 MHz
<b>FCC compliance:</b>	Meets ANSI/TIA-968-A; contacts plated with 50 microinches of gold
<b>IEC compliance:</b>	Meets IEC 60603-7
<b>PoE compliance:</b>	Meets requirements of IEEE 802.3af and IEEE 802.3at for PoE applications
<b>RoHS compliance:</b>	Compliant
<b>Mounting options:</b>	Mounts to standard EIA 19" or 23" racks (23" requires use of extender brackets)
<b>Packaging:</b>	Includes mounting screws (#12-24 and M6) and pre-numbered labels and covers

### key features and benefits

<b>100% performance tested</b>	Confidence that each port delivers specified performance
<b>110 style punchdown termination</b>	Utilizes industry standard termination style and includes retention cap
<b>Industry standard RJ45 interface</b>	Familiar to end-users; backwards compatible
<b>Identification</b>	Follows TIA/EIA-606-A labeling standards to manage and organize installation

### applications

Applications include:

- Ethernet 10BASE-T, 100BASE-T (Fast Ethernet), and 1000BASE-T (Gigabit Ethernet)
- 155 Mb/s ATM, 622 Mb/s ATM, 1.2 Gb/s ATM
- Token Ring 4/16
- Voice over Internet Protocol (VoIP)

### NetKey® Cabling System

#### NetKey® Category 6 All Molded Punchdown Patch Panels

<b>24-port, 1 RU:</b>	NK6PP24P
<b>48-port, 2 RU:</b>	NK6PP48P

#### Filler Panels

<b>1 RU, tool-less with square holes:</b>	TLBP1S-V
<b>1 RU, tool-less with round tapped holes:</b>	TLBP1R-V
<b>2 RU, tool-less with square holes:</b>	TLBP2S-V
<b>2 RU, tool-less with round tapped holes:</b>	TLBP2R-V

#### Strain Relief Bars

<b>Extended:</b>	SRB19BLY
<b>Tak-Ty™ Hook &amp; Loop:</b>	SRBM19BLY
<b>Straight:</b>	SRBS19BL-XY

#### NetKey® Category 6 Patch Cords

<b>Foot lengths:</b>	NK6PC3*Y
<b>Meter lengths:</b>	NK6PC1M^Y

#### Replacement Labels

<b>Numbered 1 – 24:</b>	C6PPLK1-24
<b>Numbered 25 – 48:</b>	C6PPLK25-48

#### Termination and Cable Prep Tools

<b>Punchdown tool:</b>	PDT110‡
<b>Cable snipping tool:</b>	CWST
<b>Cable stripping tool:</b>	CJAST

\*For standard lengths other than 3 feet (5, 7, 10, 14, or 20) change the length designation in part number to the desired length. For standard cable colors other than Off White, add suffix BU (Blue), GR (Green), RD (Red), or YL (Yellow) before the Y at the end of the part number. For example, the part number for a blue 5 foot patch cord is NK6PC5BUY.

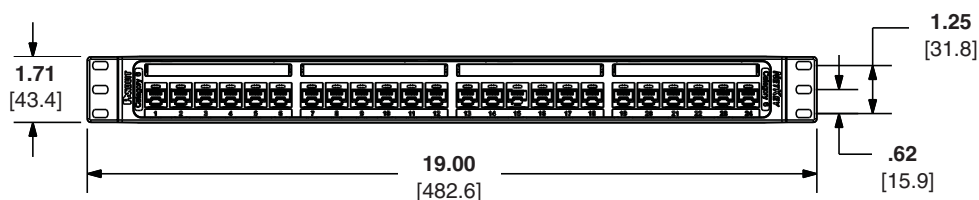
^For standard lengths other than 1 meter (2, 3, 4, or 5) change the length designation in part number to the desired length. For standard cable colors other than Off White, add suffix BU (Blue), GR (Green), RD (Red), or YL (Yellow) before the Y at the end of the part number. For example, the part number for a blue 5 meter patch cord is NK6PC5MBUY.

‡Terminates NetKey® Punchdown Jack Modules and NetKey® Punchdown Patch Panels.

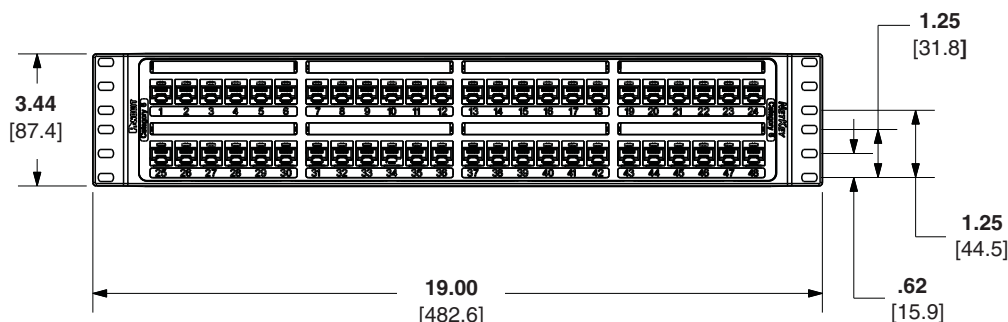
# NetKey® Category 6 All Molded Punchdown Patch Panels

## NetKey® Category 6 Electrical Performance

Parameters	dB @ 100 MHz
<b>NEXT</b>	>46.0
<b>FEXT</b>	>35.1
<b>Attenuation</b>	<0.32
<b>Return Loss</b>	>16.0
<b>LCL</b>	>20.0



**NK6PP24P**



**NK6PP48P**

Dimensions are in inches. [Dimensions in brackets are metric].

### WORLDWIDE SUBSIDIARIES AND SALES OFFICES

PANDUIT CANADA  
Markham, Ontario  
cs-cdn@panduit.com  
Phone: 800.777.3300

PANDUIT EUROPE LTD.  
London, UK  
cs-emea@panduit.com  
Phone: 44.20.8601.7200

PANDUIT SINGAPORE PTE. LTD.  
Republic of Singapore  
cs-ap@panduit.com  
Phone: 65.6305.7575

PANDUIT JAPAN  
Tokyo, Japan  
cs-japan@panduit.com  
Phone: 81.3.6863.6000

PANDUIT LATIN AMERICA  
Guadalajara, Mexico  
cs-la@panduit.com  
Phone: 52.33.3777.6000

PANDUIT AUSTRALIA PTY. LTD.  
Victoria, Australia  
cs-aus@panduit.com  
Phone: 61.3.9794.9020

For a copy of Panduit product warranties, log on to [www.panduit.com/warranty](http://www.panduit.com/warranty)

For more information

Visit us at [www.panduit.com](http://www.panduit.com)

Contact Customer Service by email: [cs@panduit.com](mailto:cs@panduit.com)  
or by phone: 800.777.3300 and reference NKDS24

**PANDUIT®**

©2011 Panduit Corp.  
ALL RIGHTS RESERVED.

WW-NKDS24

3/2011

# Mouser Electronics

Authorized Distributor

Click to View Pricing, Inventory, Delivery & Lifecycle Information:

[Panduit:](#)

[NK6PP24P](#)