

MICRO SWITCH

FREEPORT ILLINOIS, U.S.A
A DIVISION OF HONEYWELL
FED. MFG. CODE 91929

SWITCH-BASIC

MT-4RL13-D10

MT-4RL13-D10

REPLACES X 77835-MT

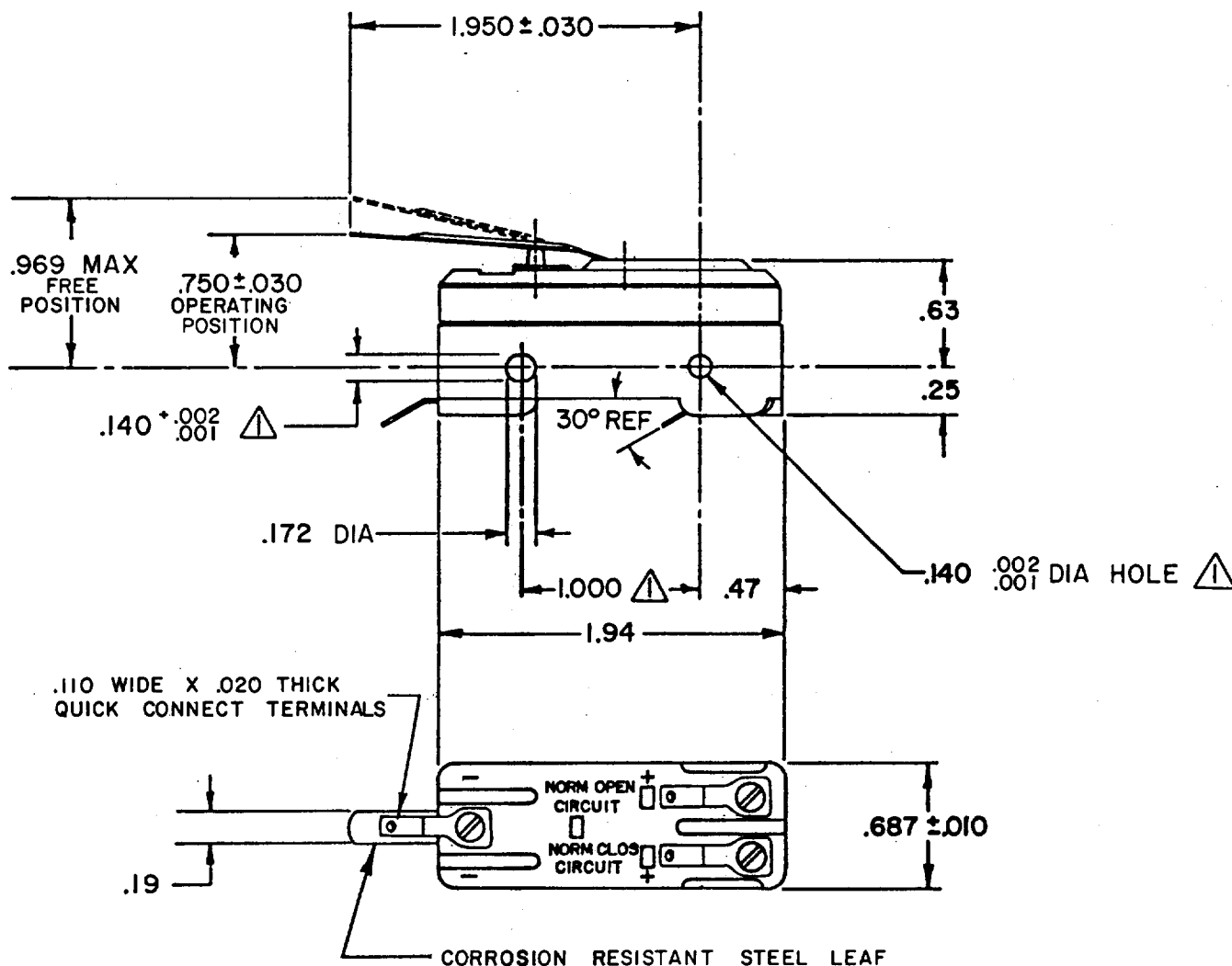
RELEASE NO. PR-12995

DRAWING NUMBER

3

X

ISSUE



.110 WIDE X .020 THICK
QUICK CONNECT TERMINALS

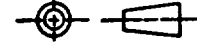
CORROSION RESISTANT STEEL LEAF

NOTES

- 1 MOUNTING HOLES WILL ACCEPT PINS OR SCREWS OF .139 MAX DIA. ON 1.000±.002 CENTERS
- 2 - FOR BEST RESULTS EITHER POLARIZE THE SWITCH WITH THE COMMON TERMINAL WIRED IN NEGATIVE POLARITY OR MOUNT THE SWITCH WITH BRASS SCREWS AND SPACE AT LEAST .250 AWAY FROM MAGNETIC MATERIALS

THIS DRAWING COVERS A PROPRIETARY ITEM AND IS THE PROPERTY OF MICRO SWITCH, A DIVISION OF HONEYWELL. THIS DRAWING IS NOT TO BE COPIED OR USED WITHOUT THE APPROVAL OF MICRO SWITCH.

THIRD ANGLE PROJECTION



CHARACTERISTICS	
OPERATING FORCE	----- 12 OZ. MAX
RELEASE FORCE	----- 1 OZ. MIN
DO NOT OVERTRAVEL MORE THAN	.060

ELECTRICAL DATA			
CONTACT ARRANGEMENT			
S P D T			
NON-POLARIZED	VOLTS D-C 125 250	MOTOR 1/4HP + -	RESISTIVE 10 AMPS 1.5 TO 3.0V
POLARIZED OR NON-MAGNETICALLY MOUNTED	VOLTS D-C 125 250	MOTOR 1/2 HP + -	RESISTIVE 10 AMPS 1.5 TO 3.0 *
* NOT SUITABLE FOR USE AT LESS THAN 1.5 AMPS + WILL NOT BREAK LOCKED ROTOR CURRENT			
L168 (NON-POLARIZED)			
10A 125 VAC-DC 1/4 HP 125 VAC-DC			

SCALE FULL			
DO NOT SCALE PRINT			
TOLERANCES			
APPLY TO DESIGN UNITS. CONVERSIONS ARE ONLY FOR REFERENCE. UNLESS NOTED, TOLERANCES ARE 2			
DIM.	TOL.	DIM.	TOL.
IN	MM/IN	IN	MM/IN
NO PLACES	±	1/64	0.015
ONE PLACE	±	0.0010	0.00010
TWO PLACES	±, ±X	0.00005	0.000010
THREE PLACES	±, ±X	0.000005	0.0000010
ANGLES			
DESIGN UNITS <input type="checkbox"/> IN METRIC		US CUSTOMARY <input checked="" type="checkbox"/>	
WEIGHT .060 LB.			

REVISIONS

A	OBS CO 65303-A	J A S 15 JUN 89
B	REIN PR 17742-T	T J A 19 OCT 89

FO-52848-A
DRAWN
M A M 7 MAY 84
CHECK K A G 8 MAY 84

Mouser Electronics

Authorized Distributor

Click to View Pricing, Inventory, Delivery & Lifecycle Information:

[Honeywell:](#)

[MT-4RL13-D10](#)