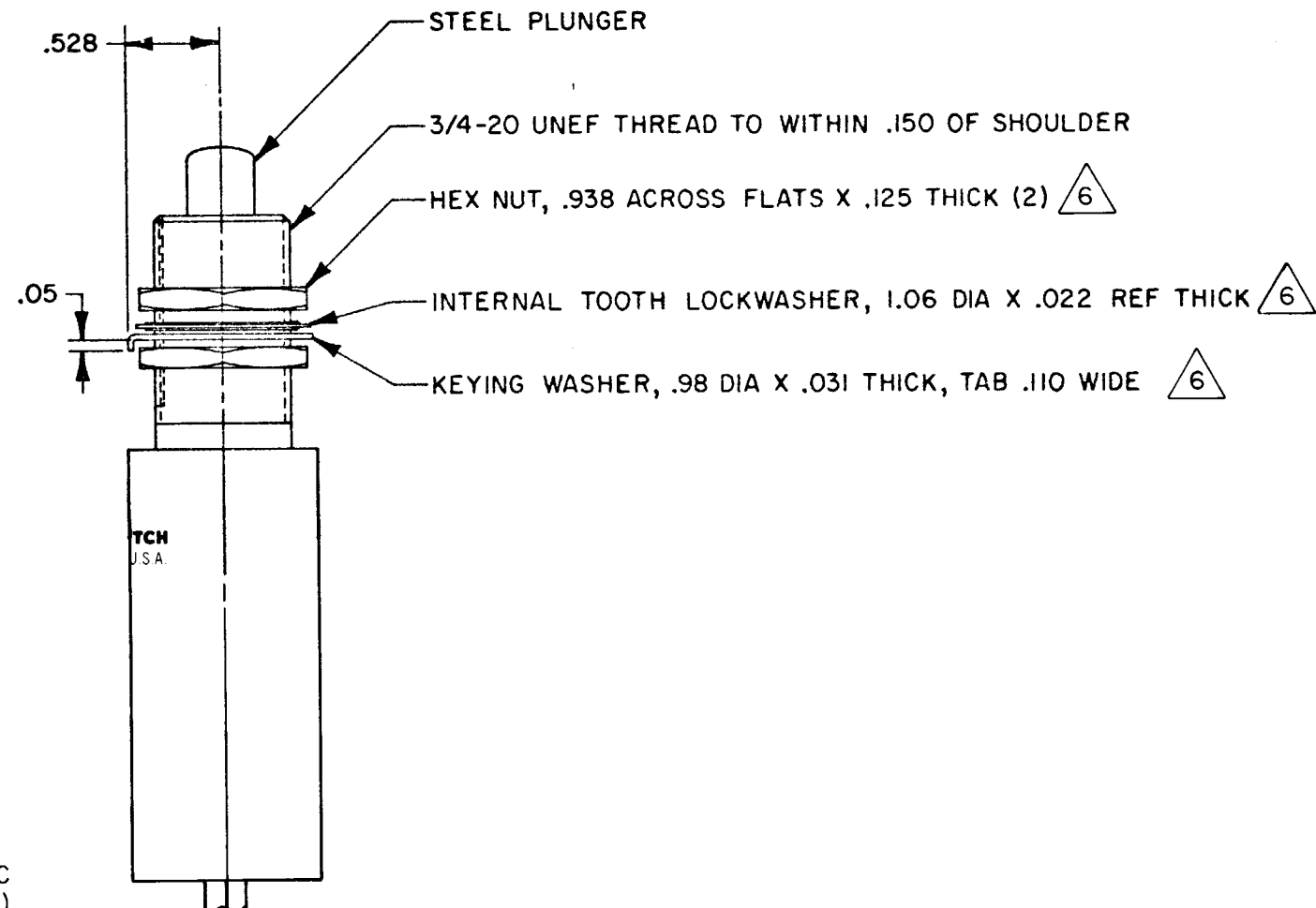
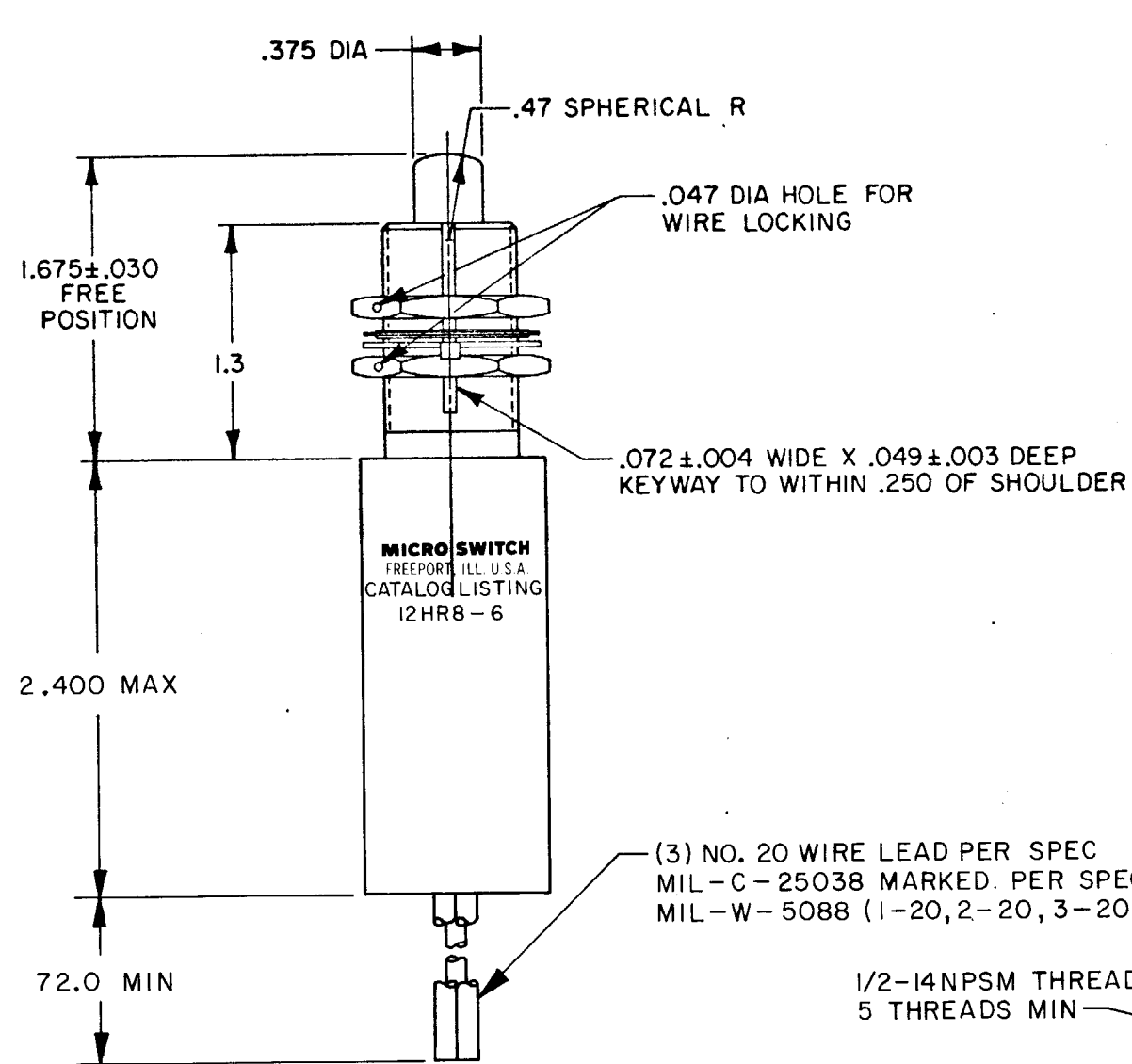
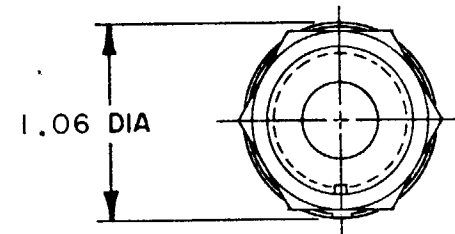
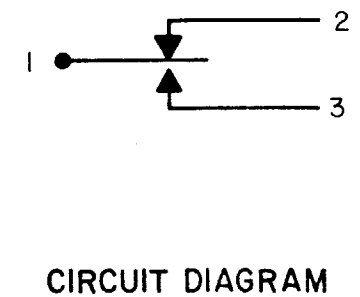


**MICRO SWITCH**  
 FREEPORT, ILLINOIS, U.S.A.  
 A DIVISION OF HONEYWELL  
 FED. MFG. CODE 91929

**SWITCH - ENCLOSED**

CATALOG LISTING  
**12HR8-6**



- NOTES
- SWITCH SEALED PER MIL-S-8805 SYMBOL 5 SWITCH CHAMBER. WATERTIGHT TEST NOT APPLICABLE
  - ALL EXPOSED PARTS ARE CORROSION RESISTANT
  - CIRCUIT DIAGRAM PERMANENTLY MARKED ON SWITCH HOUSING
  - LEAD IDENTIFICATION IS SHOWN ON CIRCUIT DIAGRAM
  - SWITCH WILL OPERATE SATISFACTORILY IN TEMPERATURES FROM -85°F TO +599°F
  - HARDWARE MAY BE PACKAGED UNASSEMBLED PER MIL-S-8805

12HR8-6  
 M  
 DRAWING NUMBER  
 ISSUE 10  
 REVISIONS  
 A C047277  
 J A P  
 7 JAN 81  
 CHECK  
 13 JAN 81  
 CHECK  
 7 JAN 81  
 DRAWN  
 JAP  
 FO-32851-B

THIS DRAWING COVERS A PROPRIETARY ITEM AND IS THE PROPERTY OF MICRO SWITCH, A DIVISION OF HONEYWELL. THIS DRAWING IS NOT TO BE COPIED OR USED WITHOUT THE APPROVAL OF MICRO SWITCH.

CHARACTERISTICS	
OPERATING FORCE	6-12 LB
FULL OVERTRAVEL FORCE	35 LB MAX
RELEASE FORCE	5 LB MIN
PRETRAVEL	.050 MAX
DIFFERENTIAL TRAVEL	.015 MAX
OVERTRAVEL	.250 MIN

ELECTRICAL DATA	
CONTACT ARRANGEMENT S P D T	
28 VOLTS DC	
RESISTIVE	5 AMP
INDUCTIVE	2 AMP

SCALE FULL			
DO NOT SCALE PRINT			
TOLERANCES			
APPLY TO DESIGN UNITS. CONVERSIONS ARE ONLY FOR REFERENCE UNLESS NOTED. TOLERANCES ARE:			
DIM.	TOL.	DIM.	TOL.
IN	IN	MM	MM
NO PLACES	X	1/24	
ONE PLACE	X,X	0.47/0.15	X,X 0.87/0.3
TWO PLACES	X,XX	0.147/0.06	X,XX 0.281/0.15
THREE PLACES	X,XXX		X,XXX 0.137/0.05
ANGLES			
DESIGN UNITS		US CUSTOMARY	
SI METRIC		US CUSTOMARY	
THIRD ANGLE PROJECTION			
WEIGHT 10.2 OZ APPROX			

# Mouser Electronics

Authorized Distributor

Click to View Pricing, Inventory, Delivery & Lifecycle Information:

[Honeywell:](#)

[12HR8-6](#)