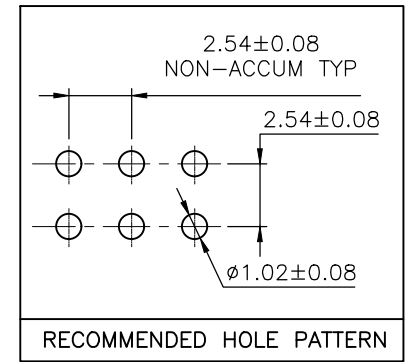
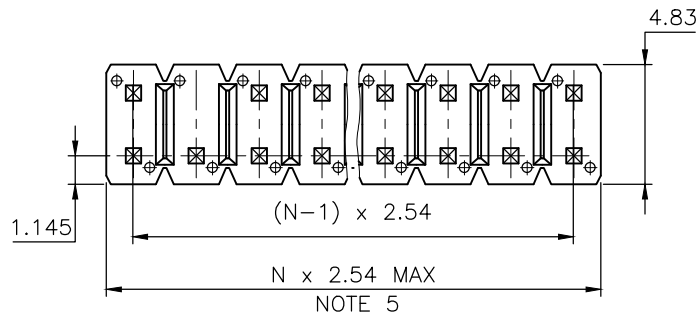


PRODUCT NUMBER

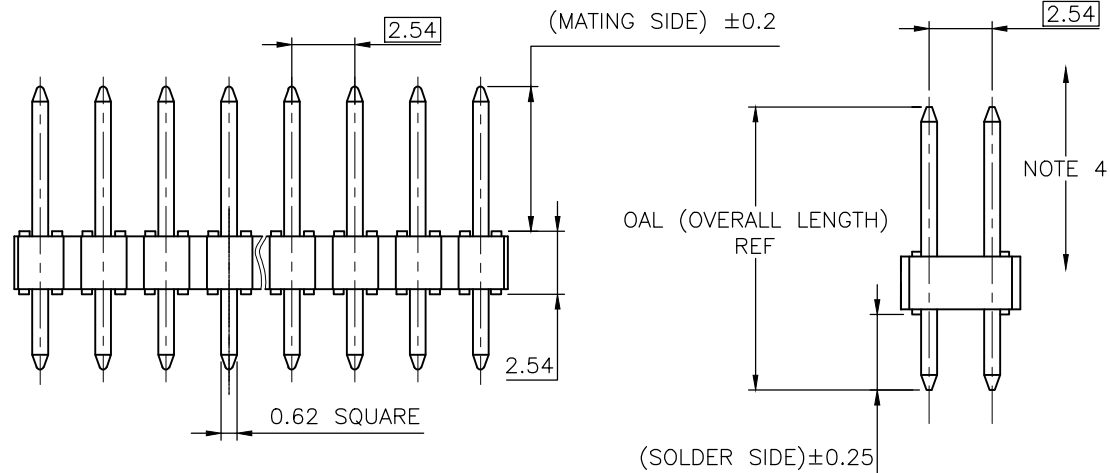
77314-YXXXLF

- RoHS COMPATIBLE  
SEE NOTE 8
- OPTION LETTER  
SEE NOTE 7 & SHEET 9
- PIN STYLE SEE SHEET 2 TO 8
- PLATING SEE SHEET 2

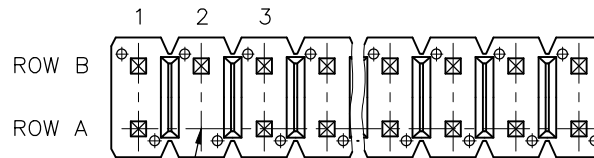


NOTES:

1. HOUSING MAT'L : HIGH TEMPERATURE THERMOPLASTIC. UL94V-0 COLOR: BLACK
2. PIN MATERIAL : PHOSPHOR BRONZE
3. PRODUCT PACKAGED IN POLY BAGS.
4. 9N MIN RETENTION IN EITHER DIRECTION
5. TO DETERMINE DIMENSIONS :  
N = NUMBER OF POSITIONS PER ROW  
EXAMPLE : 8 POS N x 2.54 = 20.32mm
6. UNDERPLATING : 1.27µm Ni MIN
7. RETENTION OPTION "R", OMIT FROM PRODUCT NUMBER IF FEATURE IS NOT APPLICABLE
8. RoHS COMPATIBLE PRODUCT SPECIFICATIONS



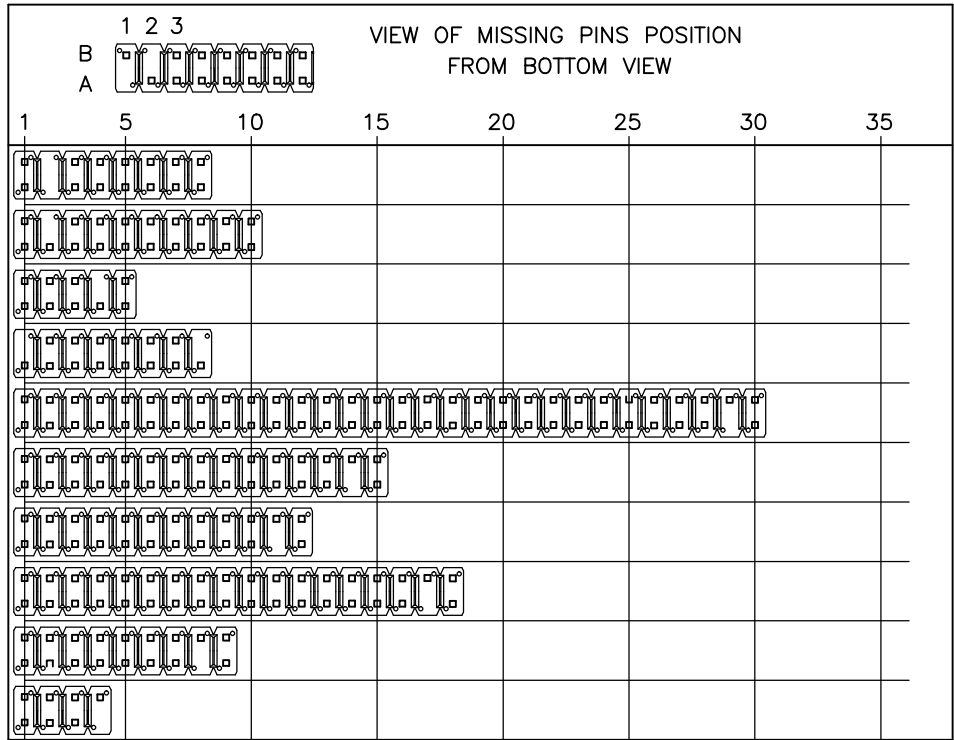
- a - PLATING:
  - "LF" MEANS THE PRODUCT IS LEAD-FREE, 2µm MINIMUM MATTE TIN OVER 1.27µm MINIMUM NICKEL UNDERPLATE.
- b - MANUFACTURING PROCESS COMPATIBILITY
  - THE HOUSING WILL WITHSTAND EXPOSURE TO 260°C ±5°C SOLDER BATH TEMPERATURE FOR 5 SECONDS IN A WAVE SOLDER APPLICATION WITH A 1.6mm MIN THICK CIRCUIT BOARD.
- c - LABELING:
  - MEETS PACKAGING SPECS AS PER GS-14-920
- d - LEGAL STATEMENT: SEE GS-47-0004



BOTTOM VIEW

mat'l. code SEE P/N		surface ISO 1302 ✓ ISO 406 ISO 1101		tolerance ISO 406 ISO 1101		projection mm		product family BSTIK			
ltr ecn no dr date		tolerances unless otherwise specified		.x ±0.3		mm		title HEADER STR,DR POL DUPLEX 2.54mm.			
BR F11-0050 LMU 11.05.11		angles		.xx ±0.15		scale 5:1		dwg no 77314			
BS F12-0010 APA 12.02.01		linear		.xxx ±0.05		FCJ		sheet 1 of 10 size A3			
BT B-16702 JCO 14.01.08		dr G LEOTY		91.11.13				type CUSTOMER Drawing			
BU B-18917 LMU 14.09.26		enfr J COMPAGNON		95.12.05							
BV B-20023 AMA 15.01.20		chr J COMPAGNON									
BP F10-0252 JCO 10.11.30		appd JMC		95.12.05							
sheet index	revision sheet	BV 1	AK 2	AF 3	AF 4	AF 5	AH 6	AJ 7	W 8	K 9	A 10

PIN STYLE	PRODUCT DEFINITION			
	POS	MATING SIDE ±0.2	SOLDER SIDE ±0.25	("OAL") REF
01	2X08	5.72	2.54	10.8
02	2X10	5.84	3.05	11.5
04	2X05	5.72	3.05	11.3
05	2X08	5.84	3.42	11.8
06	2X30	5.72	2.54	10.8
07	2X16	5.72	2.54	10.8
08	2X12	5.72	2.54	10.8
09	2X18	5.72	2.54	10.8
10	2X09	5.72	2.54	10.8
11	2X04	5.72	2.54	10.8



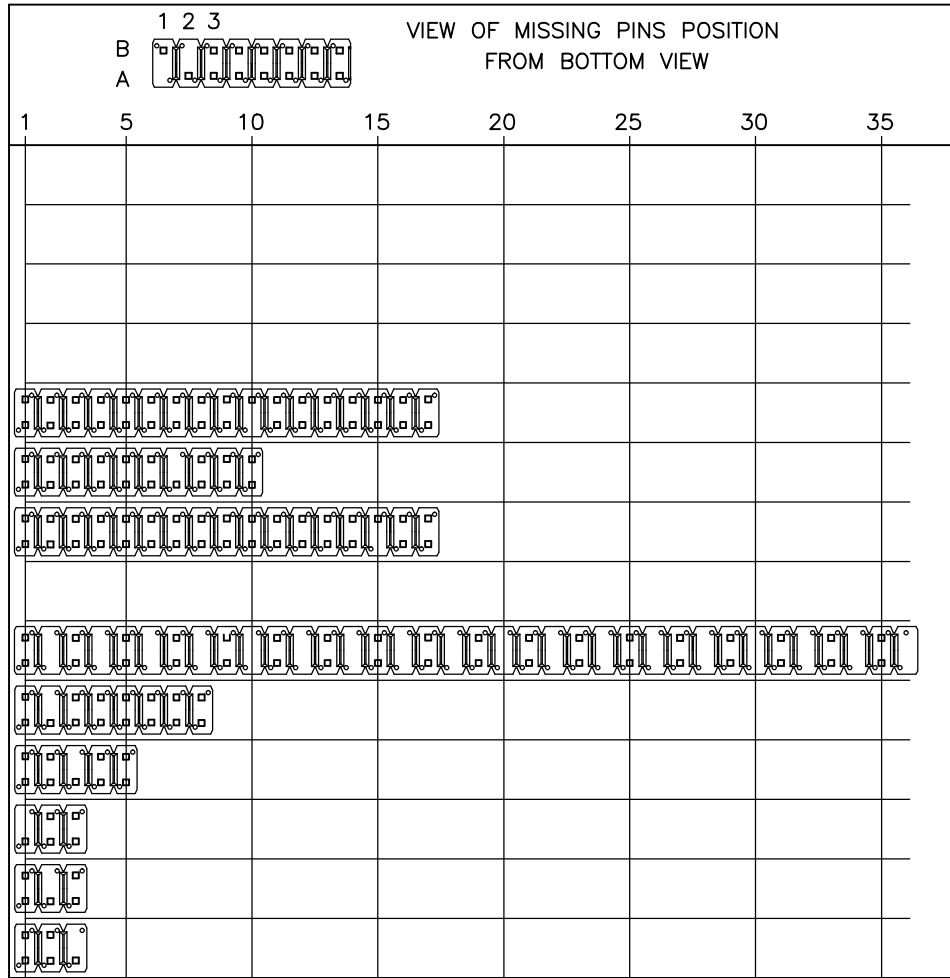
77314-8XXLF	0.38µm Au/GXT	2.0-7.5 Sn MATTE
77314-5XXLF	0.25µm Au/GXT	2.0-7.5 Sn MATTE
77314-4XXLF	2.0-7.5 Sn MATTE	
77314-2XXLF	1.27µm Au	2.0-7.5 Sn MATTE
77314-1XXLF	0.76µm Au/GXT	2.0-7.5 Sn MATTE
77314-1XXSLF	0.76µm Au/GXT	GOLD FLASH
PLATING CODE	CONTACT AREA	REMAINDER
	PLATING THICKNESS OVER 1.27µm Ni	

mat'l. code		surface	tolerance	projection	product family
		ISO 1302	ISO 406 ISO 1101		BSTIK
ltr ecn no dr date		tolerances unless otherwise specified		title	
AH	F06-0196	LMU	06.06.20	HEADER,STR,DR	
AJ	F08-0148	RTR	08.03.31	POL DUPLEX 2.54mm	
		angles	linear	mm	scale 1:1
AE	F10707	LMU	01.12.03	dr	G LEOTY 91.11.13
AF	F20197	LMU	02.04.16	enfr	PHAMVAN JM 95.02.27
AG	F04-0362	JCO	04.12.10	chr	COMPAGNON J 95.02.27
		appd	JMP	95.02.27	
sheet index	revision sheet			dwg no 77314 sheet 2 of - size A3	
				type CUSTOMER Drawing	



Copyright FCI

PIN STYLE	PRODUCT DEFINITION			
	POS	MATING SIDE ±0.2	SOLDER SIDE ±0.25	("OAL") REF
13				
14				
15				
16				
17	2X17	5.72	3.42	10.8
18	2X10	5.72	2.54	10.8
19	2X17	5.72	2.54	10.8
20				
21	2X36	5.72	2.54	10.8
22	2X08	5.72	2.54	10.8
23	2X05	5.72	2.54	10.8
24	2X03	5.72	2.54	10.8
25	2X03	5.72	2.54	10.8
26	2X03	5.72	2.54	10.8

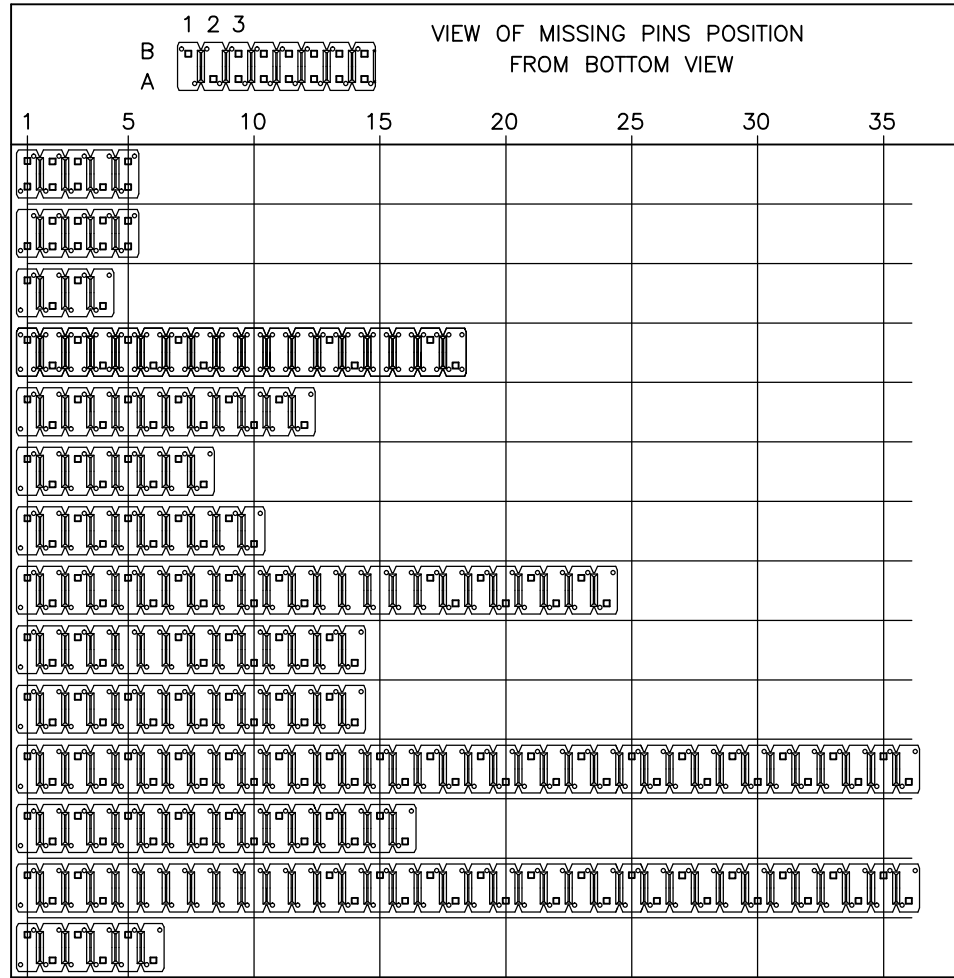


FCIconnect.com

Copyright FCI

mat'l. code		surface ISO 1302 <input checked="" type="checkbox"/> ISO 406 ISO 1101		tolerance tolerances unless otherwise specified		projection 		product family BERGSTIK	
ltr	ecn no	dr	date	angles	linear	mm ←→		title HEADER,STR,DR POL DUPLEX 2.54mm	
AB	F40235	JMC	94.02.25			scale 1:1		sheet 3 of - size	
AC	F30323	JMC	95.02.27					77314 A3	
AD	F10707	LMU	01.12.03			type		CUSTOMER Drawing	
AE	F20197	LMU	02.04.16	dr	G LEOTY	91.11.13			
AF	F06-0196	LMU	06.06.20	enr	PHAMVAN JM	95.02.27			
				chr	COMPAGNON J	95.02.27			
				appd	JMP	95.02.27			
sheet index	revision sheet								

PIN STYLE	PRODUCT DEFINITION			
	POS	MATING SIDE ±0.2	SOLDER SIDE ±0.25	("OAL") REF
27	2X05	5.72	2.54	10.8
28	2X05	5.72	2.54	10.8
29	2X04	12.7	5.72	20.96
30	2X18	12.7	5.72	20.96
31	2X12	12.7	5.72	20.96
32	2X08	12.7	5.72	20.96
33	2X10	12.7	5.72	20.96
34	2X24	12.7	5.72	20.96
35	2X14	12.7	5.72	20.96
36	2X14	12.7	5.72	20.96
37	2X36	12.7	5.72	20.96
38	2X16	12.7	5.72	20.96
39	2X36	12.7	5.72	20.96
40	2X06	12.7	5.72	20.96

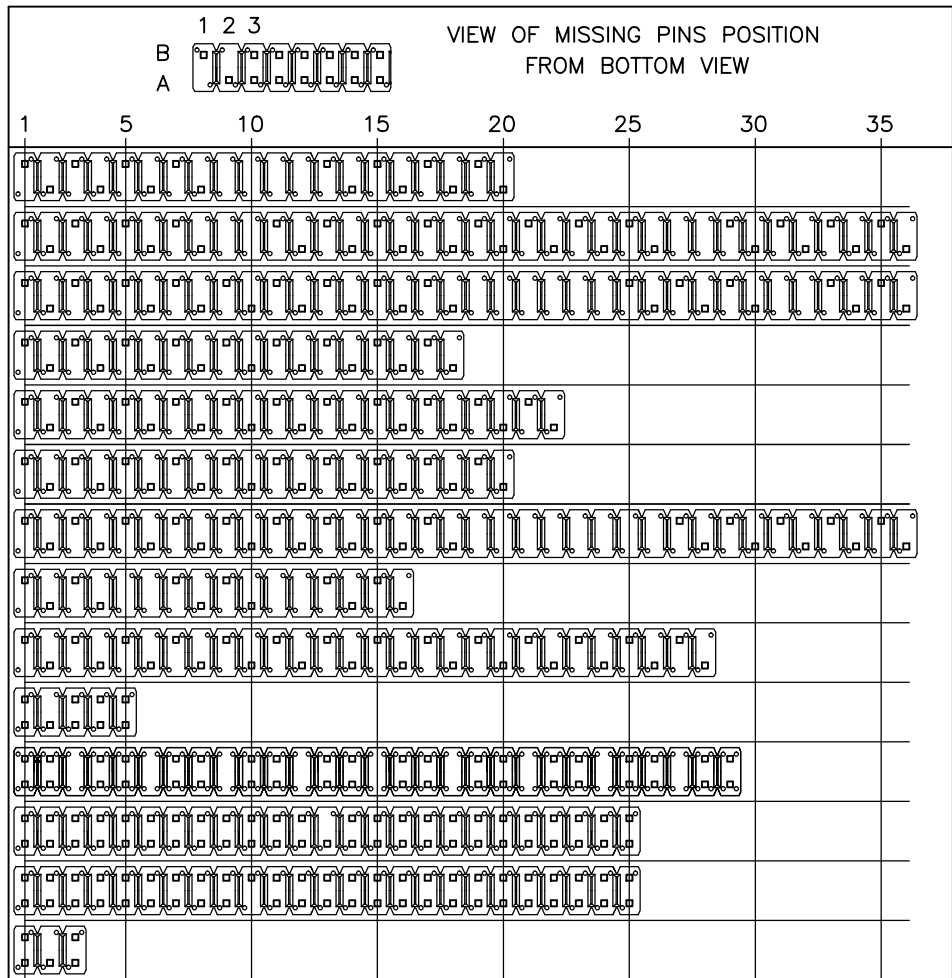


FCIconnect.com

Copyright FCI

mat'l. code		surface		tolerance		projection		product family	
		ISO 1302		ISO 406 ISO 1101				BSTIK	
ltr		ecn no		dr		date		title	
AB		F40235		JMC		94.02.25		HEADER,STR,DR	
AC		F30323		JMC		95.02.27		POL DUPLEX 2.54mm	
AD		F10707		LMU		01.12.03		scale 1:1	
AE		F20197		LMU		02.04.16		dr G LEOTY 91.11.13	
AF		F06-0196		LMU		06.06.20		enrg PHAMVAN JM 95.02.27	
								chr COMPAGNON J 95.02.27	
								appd JMP 95.02.27	
sheet		revision						dwg no	
index		sheet						77314	
								sheet 4 of - size	
								A3	
								type CUSTOMER Drawing	

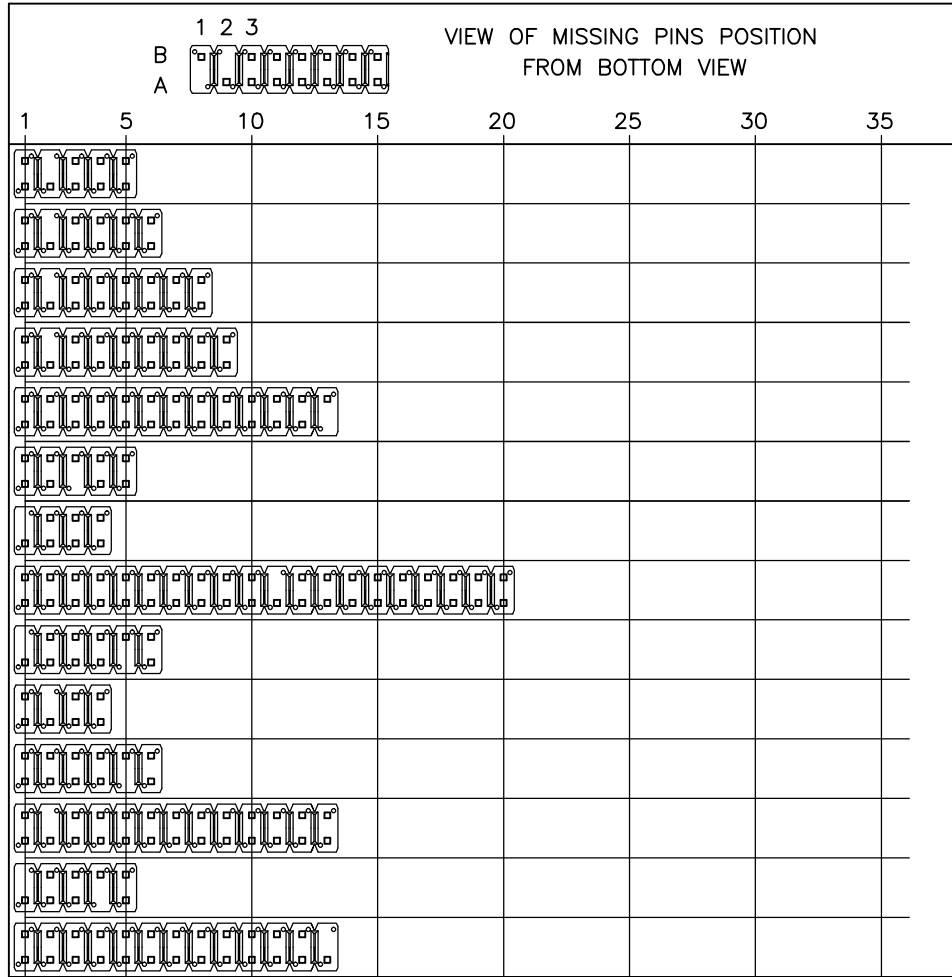
PIN STYLE	PRODUCT DEFINITION			
	POS	MATING SIDE ±0.2	SOLDER SIDE ±0.25	("OAL") REF
41	2X20	12.7	5.72	20.96
42	2X36	12.7	5.72	20.96
43	2X36	12.7	5.72	20.96
44	2X18	12.7	5.72	20.96
45	2X22	12.7	5.72	20.96
46	2X20	12.7	5.72	20.96
47	2X36	12.7	5.72	20.96
48	2X16	12.7	5.72	20.96
49	2X28	12.7	5.72	20.96
50	2X05	5.72	2.54	10.8
51	2X29	5.84	3.42	11.8
52	2X25	5.72	2.54	10.8
53	2X25	12.83	3.03	18.4
54	2X03	5.84	3.42	11.8



Copyright FCI

mat'l. code		surface ISO 1302 <input checked="" type="checkbox"/> ISO 406 ISO 1101		tolerance tolerances unless otherwise specified		projection 		product family BSTIK	
ltr	ecn no	dr	date	angles	linear	mm ←→		title HEADER,STR,DR POL DUPLEX 2.54mm	
AB	F40235	JMC	94.02.25			scale 1:1		sheet 5 of - size	
AC	F30323	JMC	95.02.27					77314 A3	
AD	F10707	LMU	01.12.03			type CUSTOMER		Drawing	
AE	F20197	LMU	02.04.16	dr	G LEOTY	91.11.13			
AF	F06-0196	LMU	06.06.20	enr	PHAMVAN JM	95.02.27			
				chr	COMPAGNON J	95.02.27			
				appd	JMP	95.02.27			
sheet index	revision sheet								

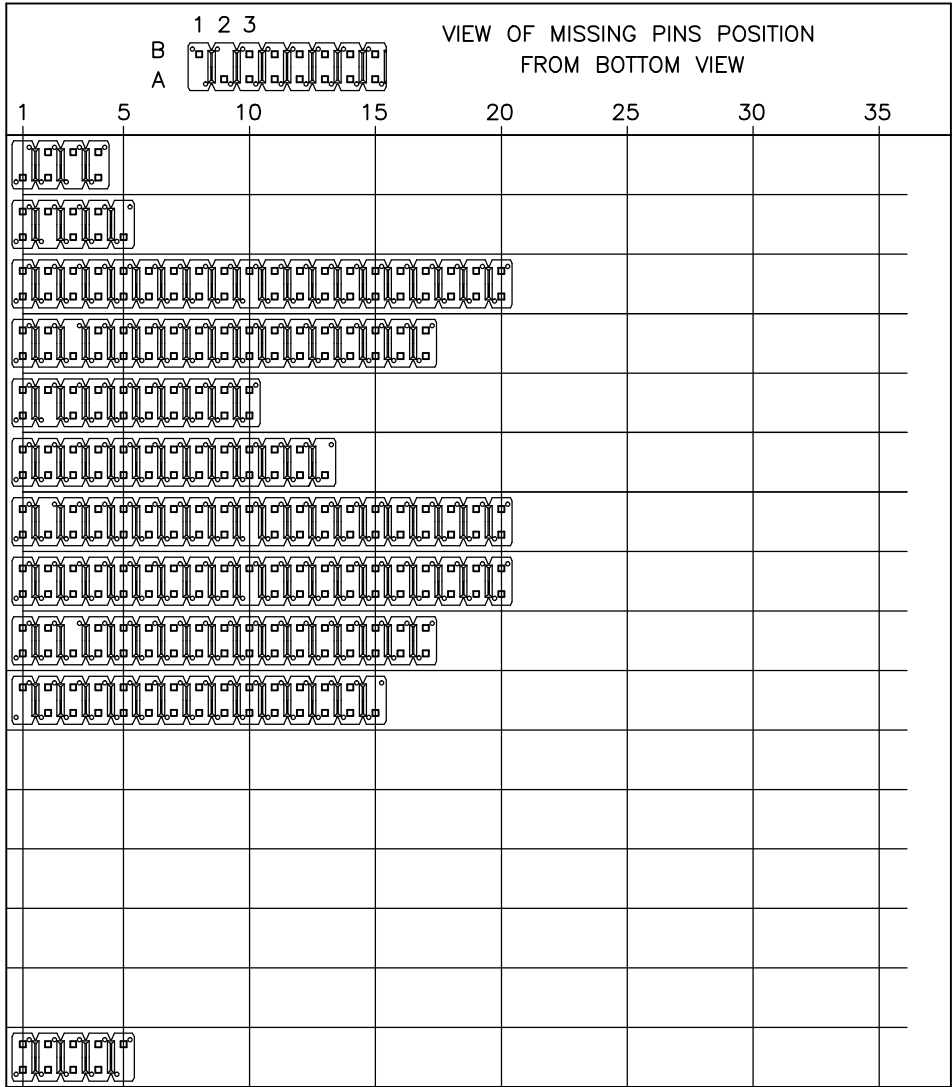
PIN STYLE	PRODUCT DEFINITION			
	POS	MATING SIDE ±0.2	SOLDER SIDE ±0.25	("OAL") REF
55	2X05	5.84	3.42	11.8
56	2X06	5.84	3.42	11.8
57	2X08	5.84	3.42	11.8
58	2X09	5.84	3.42	11.8
59	2X13	5.84	3.42	11.8
60	2X05	5.84	3.42	11.8
61	2X04	5.72	2.54	10.8
62	2X20	5.72	2.54	10.8
63	2X06	5.72	2.54	10.8
64	2X04	5.84	3.42	11.8
65	2X06	5.72	2.72	10.8
66	2X13	5.84	3.12	11.5
67	2X05	5.72	2.54	10.8
68	2X13	5.84	3.42	11.8



Copyright FCI

mat'l. code		surface		tolerance		projection		product family	
		ISO 1302		ISO 406 ISO 1101		mm		BSTIK	
ltr ecn no dr date		tolerances unless otherwise specified		angles		linear		title	
AB F40235 JMC 94.02.25								HEADER,STR,DR	
AC F30323 JMC 95.02.27								POL DUPLEX 2.54mm	
AD F70430 JMC 97.06.02						scale 1:1		dwg no sheet 6 of - size	
AE F00100 LMU 00.01.11		dr G LEOTY		91.11.13		FCI		77314 A3	
AF F10707 LMU 01.12.03		enr PHAMVAN JM		95.02.27				type CUSTOMER Drawing	
AG F20197 LMU 02.04.16		chr COMPAGNON J		95.02.27					
AH F06-0196 LMU 06.06.20		appd JMP		95.02.27					
sheet index		revision sheet							

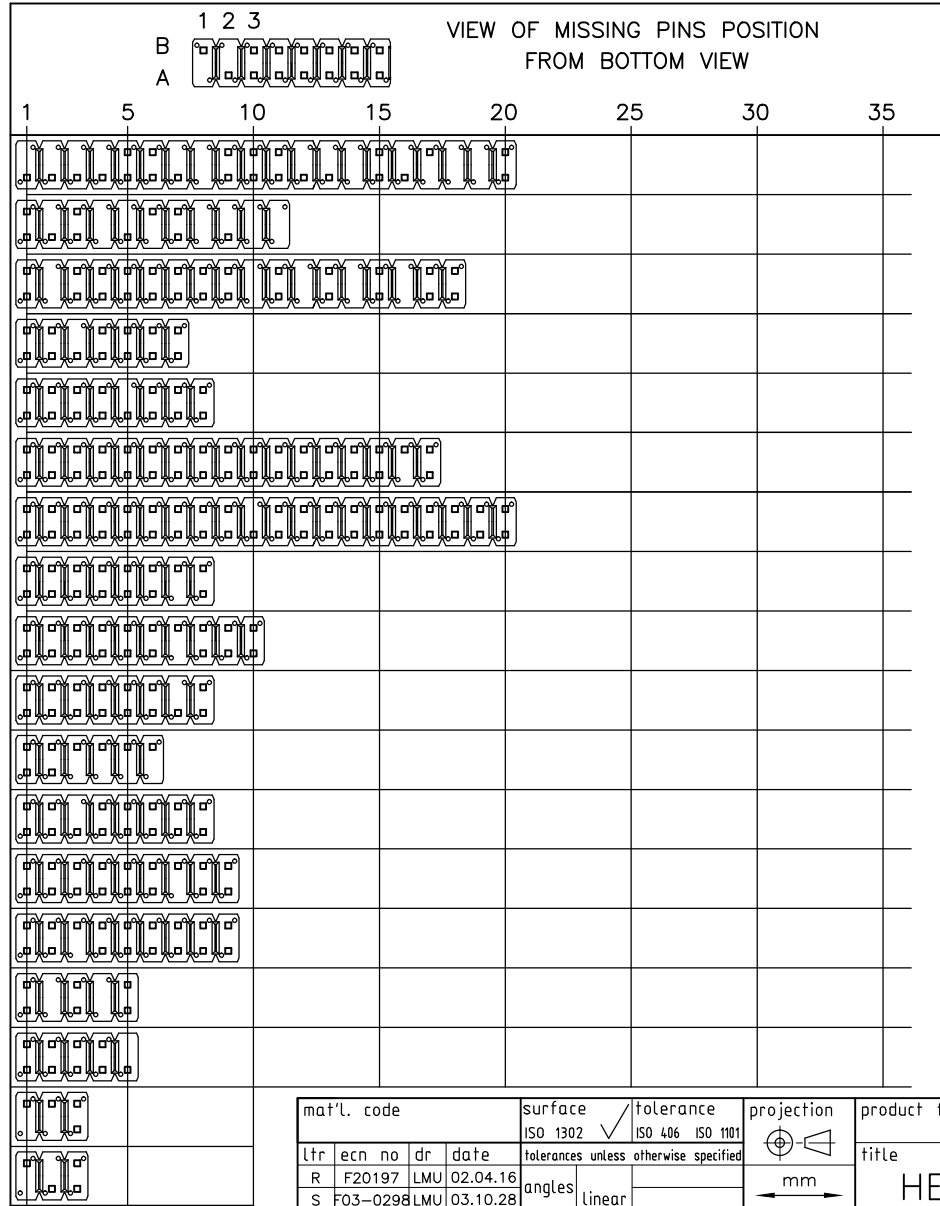
PIN STYLE	PRODUCT DEFINITION			
	POS	MATING SIDE ±0.2	SOLDER SIDE ±0.25	("OAL") REF
69	2X04	5.72	2.54	10.8
70	2X05	5.72	2.54	10.8
71	2X20	5.72	3.05	11.3
72	2X17	5.72	3.05	11.3
73	2X10	5.72	3.05	11.3
74	2X13	5.72	3.05	11.3
75	2X20	5.72	3.05	11.3
76	2X20	5.72	3.05	11.3
77	2X17	5.72	3.05	11.3
78	2X15	5.84	3.42	11.8
79				
80				
81				
82				
83				
84	2X05	5.72	3.05	11.3



Copyright FCI

mat'l. code		surface		tolerance		projection		product family	
		ISO 1302		ISO 406 ISO 1101				BSTIK	
ltr ecn no dr date		tolerances unless otherwise specified				mm		title	
AJ F06-0196 LMU 06.06.20						scale 1:1		<b>HEADER,STR,DR</b> <b>POL DUPLEX 2.54mm</b>	
AD F50246 JMC 95.04.03		angles				dwg no		sheet 7 of - size	
AE F50625 JMC 95.08.26		linear				77314		A3	
AF F50916 JMC 95.12.05		dr G LEOTY 91.11.13				type		CUSTOMER Drawing	
AG F10707 LMU 01.12.03		engr COMPAGNON J 95.12.05							
AH F20197 LMU 02.04.16		appd JMC 95.12.05							
sheet revision									
index sheet									

PIN STYLE	PRODUCT DEFINITION			
	POS	MATING SIDE ±0.2	SOLDER SIDE ±0.25	("OAL") REF
85	2X20	5.72	2.54	10.8
86	2X11	5.72	2.54	10.8
87	2X18	5.72	3.05	11.3
88	2X07	5.72	3.05	11.3
89	2X08	5.72	3.05	11.3
90	2X17	6.6	2.66	11.82
91	2X20	6.75	2.90	12.2
92	2X08	5.72	3.05	11.3
93	2X10	5.72	2.54	10.8
94	2X08	5.84	3.05	11.5
95	2X06	5.70	2.93	11.17
96	2X08	8.06	3.00	13.60
97	2X09	5.84	3.05	11.50
98	2X09	5.84	3.05	11.50
99	2X05	15.36	3.05	20.95
AA	2X05	5.90	2.36	10.80
AB	2X03	9.20	3.05	14.80
AC	2X03	9.20	3.05	14.80



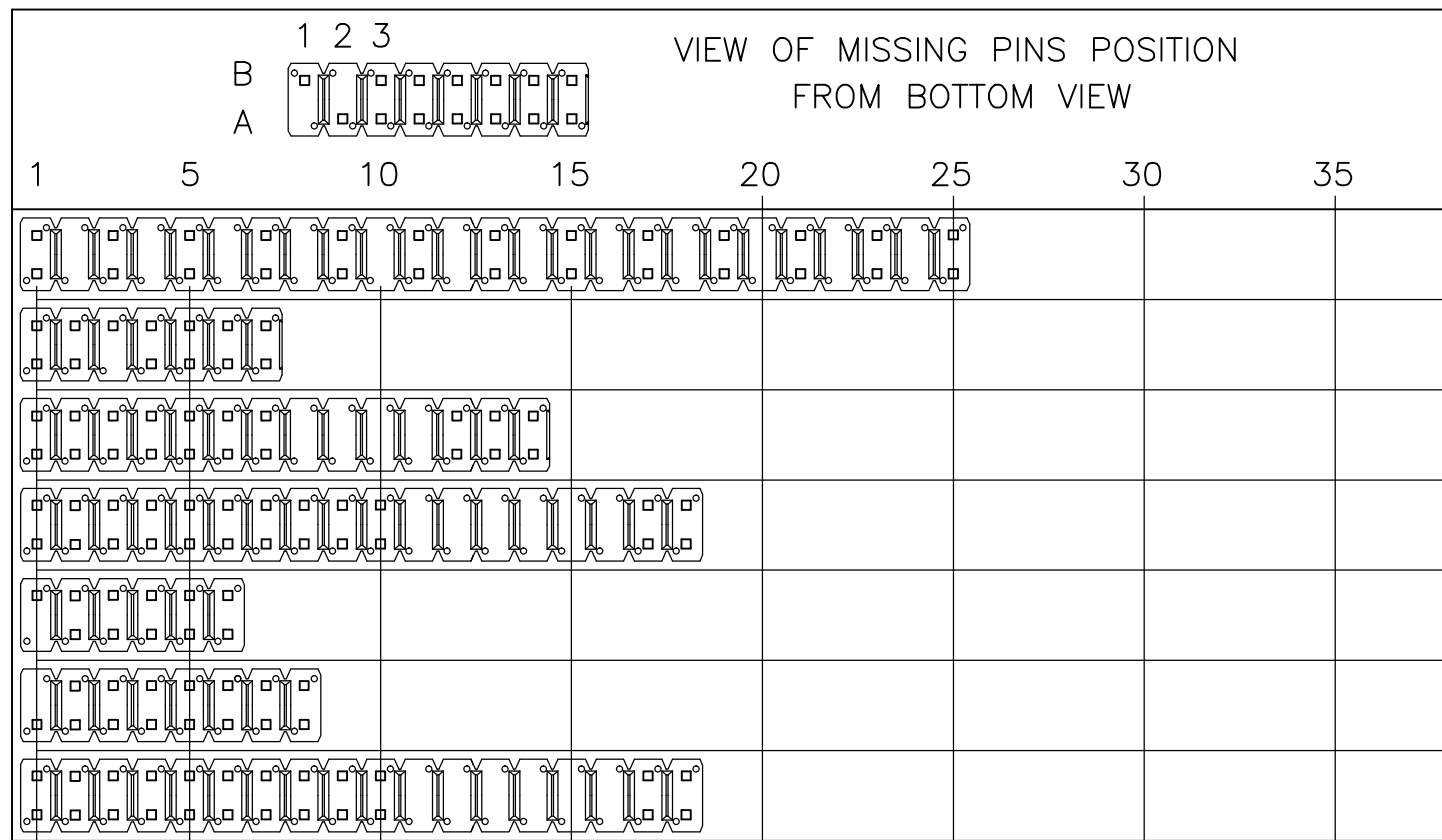
mat'l. code		surface ISO 1302 ✓ ISO 406 ISO 1101		tolerance ISO 406 ISO 1101		projection mm		product family BSTIK	
ltr		ecn no		dr		date		title	
R		F20197		LMU		02.04.16		HEADER,STR,DR	
S		F03-0298		LMU		03.10.28		POL DUPLEX 2.54mm	
T		F04-0137		LMU		04.02.12		scale N/A	
U		F06-0117		LMU		06.01.30		dr O. MATHEVON 96.08.28	
V		F06-0196		LMU		06.06.20		enrg J COMPAGNON 96.08.28	
W		F09-0218		LMU		09.11.16		chr J COMPAGNON 96.08.28	
								appd JMC 96.08.28	
sheet index		revision sheet						type CUSTOMER Drawing	



Copyright FCI

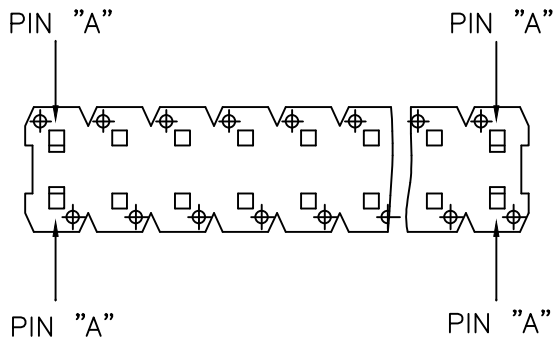
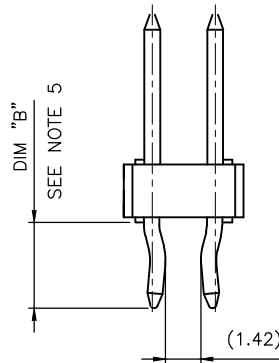
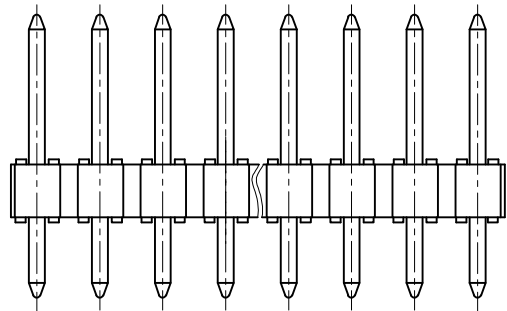


PIN STYLE	PRODUCT DEFINITION			
	POS	MATING SIDE ±0.2	SOLDER SIDE ±0.25	("OAL") REF
AD	2X25	7.75	3.05	13.35
AE	2X07	5.72	3.05	11.30
AF	2X14	5.84	2.41	10.80
AG	2X18	5.72	3.05	11.30
AH	2X06	6.75	2.90	12.20
AJ	2X08	5.84	3.42	11.80
AK	2X18	7.00	3.05	12.59



Copyright FCI

mat'l. code		surface ISO 1302 ✓		tolerance ISO 406 ISO 1101		projection mm scale N/A		product family BSTIK	
ltr	ecn no	dr	date	tolerances unless otherwise specified		mm		title HEADER,STR,DR POL DUPLEX 2.54mm	
H	F12-0010	APA	12.02.01	angles linear		mm		sheet 9 of size	
J	B-16702	JCO	14.01.08			scale N/A		77314 A3	
K	B-20023	AMA	15.01.20			FCI		type CUSTOMER Drawing	
		dr	J COMPAGNON	95.08.26					
E		F10-042	LMU	10.09.08		engr JMC		95.08.26	
F		F10-0252	JCO	10.11.30		chr			
G		F11-0050	LMU	11.05.11		appd JMC		95.08.26	
sheet index		revision sheet							



NOTES:

- 1 - PART NUMBER 77314-YXX
- 2 - PINS "A" AND "B" USED FOR RETENTION.
- 3 - DIRECTION OF RETENTION SHOWN BY ARROWS.
- 4 - KINKED LEGS LOCATION CAN BE MOVED IF A PIN IS MISSING.
- 5 - RETENTION VERSION ONLY AVAILABLE WHEN DIM "B" IS BETWEEN 3 AND 3.5mm.
- 6 - 2 AND 3 POSN KINKED HEADER ARE NOT AVAILABLE.

"R" INDICATES A RETENTION HEADER.  
 "T" INDICATES HEADERS PACKED IN TUBES

mat'l. code		surface		tolerance		projection		product family	
		ISO 1302		ISO 406 ISO 1101		mm		BSTIK	
ltr		ecn no		dr		date		title	
A		F10-0042		LMU		10.09.08		HEADER,STR,DR POL DUPLX 2.54mm	
				angles		linear		scale N/A	
		dr		L.MULIN		10.04.30		dwg no	
		enr		JMC		10.04.30		sheet 10 of	
		chr						77314	
		appd		JMC		10.04.30		A3	
sheet index		revision sheet						type	
								CUSTOMER Drawing	



Copyright FCI

# Mouser Electronics

Authorized Distributor

Click to View Pricing, Inventory, Delivery & Lifecycle Information:

## [FCI / Amphenol:](#)

[77314-825LF](#) [77314-123LF](#) [77314-124LF](#) [77314-125LF](#) [77314-127LF](#) [77314-128LF](#) [77314-159LF](#) [77314-160LF](#)  
[77314-163LF](#) [77314-168LF](#) [77314-175RLF](#) [77314-178LF](#) [77314-190LF](#) [77314-194LF](#) [77314-197LF](#) [77314-802LF](#)  
[77314-854LF](#) [77314-858LF](#) [77314-887LF](#) [77314-897LF](#) [77314-1ADLF](#) [77314-8AGLF](#) [77314-171LF](#)