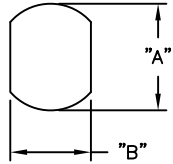
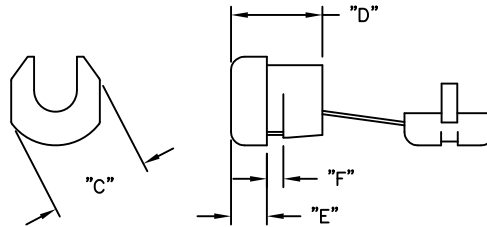


PART NUMBER	WIRES ACCOMMODATED	APPROX. WIRE SIZE	MOUNTING HOLES		C REF.	D ±.010	E REF.	F MAX. PANEL THICKNESS
			A	B				
SRB-F-1	SPT-1	.118 X .220 (3.0 X 5.6)	.374 (9.5)	.343 (8.7)	.425 (10.8)	.406 (10.3)	.157 (4.0)	.063 (1.6)
SRB-F-3	SPT-1	.118 X .220 (3.0 X 5.6)	.433 (11.0)	.390 (9.9)	.476 (12.1)	.406 (10.3)	.157 (4.0)	.063 (1.6)
SRB-F-6	SPT-1	.118 X .220 (3.0 X 5.6)	.433 (11.0)	.390 (9.9)	.492 (12.5)	.406 (10.3)	.126 (3.2)	.098 (2.5)
SRB-F-8	SPT-2	.146 X .299 (3.71 X 7.6)	.500 (12.7)	.465 (11.8)	.547 (13.9)	.406 (10.3)	.157 (4.0)	.063 (1.6)
		.150 X .299 (3.8 X 7.6)	.516 (13.1)					
SRB-F-9	SPT-2	.146 X .299 (3.71 X 7.6)	.500 (12.7)	.465 (11.8)	.547 (13.9)	.406 (10.3)	.157 (4.0)	.098 (2.5)
		.150 X .299 (3.8 X 7.6)	.516 (13.1)					
SRB-R-1	SVI	.252 (6.4)	.500 (12.7)	.453 (11.5)	.559 (14.2)	.433 (11.0)	.165 (4.2)	.063 (1.6)
	SVT	.291 (7.4)	.516 (13.1)					
SRB-R-2	SVI	.252 (6.4)	.500 (12.7)	.453 (11.5)	.559 (14.2)	.433 (11.0)	.165 (4.2)	.098 (2.5)
	SVT	.291 (7.4)	.516 (13.1)					
SRB-R-3	SJT #18/3	.299 (7.6)	.626 (15.9)	.551 (14.0)	.701 (17.8)	.583 (14.8)	.220 (5.6)	.063 (1.6)
SRB-R-4	SJT #18/3	.299 (7.6)	.626 (15.9)	.551 (14.0)	.693 (17.6)	.583 (14.8)	.220 (5.6)	.126 (3.2)
SRB-R-7	SJT #16/3	.323 - .362 (8.2 - 9.2)	.626 (15.9)	.551 (14.0)	.701 (17.8)	.583 (14.8)	.220 (5.6)	.063 (1.6)
SRB-R-8	SJT #16/3	.323 - .362 (8.2 - 9.2)	.626 (15.9)	.551 (14.0)	.681 (17.3)	.583 (14.8)	.228 (5.8)	.126 (3.2)
SRB-R-9	SJT #14/3	.362 - .413 (9.2 - 10.5)	.748 (19)	.650 (16.5)	.847 (21.5)	.750 (19.1)	.307 (7.8)	.063 (1.6)
		.433 (11)	.780 (19.8)					
SRB-R-10	SJT #14/3	.362 - .413 (9.2 - 10.5)	.748 (19)	.650 (16.5)	.854 (21.7)	.764 (19.4)	.307 (7.8)	.126 (3.2)
		.433 (11)	.780 (19.8)					

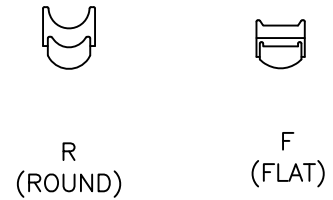
MOUNTING HOLE



BUSHING DIMENSIONS



KEY-CONTOUR STYLE



NOTES:

1. MATERIAL: NYLON 6/6 UL 94 V-2 (RMS-315).
2. COLOR: BLACK.
3. UL LISTED, CARD # E107293

TITLE: STRAIN RELIEF BUSHINGS		DWG IN IN (MM)		FINAL			
TOLERANCES UNLESS NOTED .XX=±.010 .XXX=±.005 FRAC=±1/64 ANG=±1°	FILE # SRB	DWN: R.D.G.	APP: R.D.G.	PART #		PRINT TYPE	
	MAT'L: SEE NOTES	DT: 04/20/06	CHKD: S.J.	SEE TABLE		CA	
	RE: RICHCO, INC.	RICHCO INC. ENG@RICHCO-INC.COM (773) 539-4060					

B	SEE CO 200294 FOR CHANGES	SK 12.12.08
A	RELEASED FOR PRODUCTION (SEE ECN 1161)	S.J. 05.02.06
REV	DESCRIPTION	ENGR DATE

Mouser Electronics

Authorized Distributor

Click to View Pricing, Inventory, Delivery & Lifecycle Information:

[Essentra:](#)

[SRB-F-6](#) [SRB-R-9](#) [SRB-F-1](#) [SRB-R-2](#) [SRB-R-8](#) [SRB-F-8](#) [SRB-F-9](#) [SRB-R-1](#) [SRB-R-10](#) [SRB-R-3](#) [SRB-R-4](#)
[SRB-R-7](#)