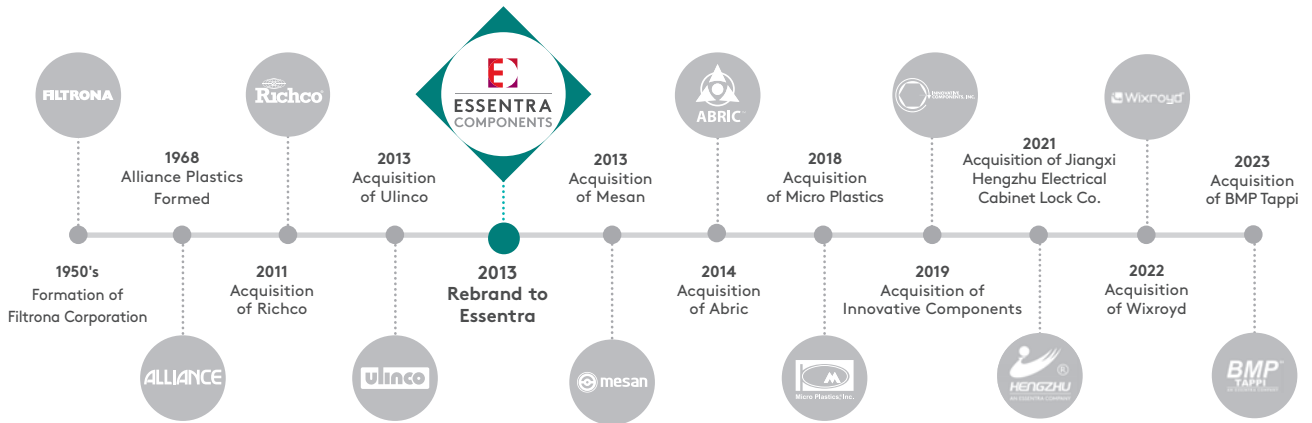


WHO IS ESSENTRA COMPONENTS?

We are global manufacturers and distributors of vital component parts for hundreds of markets and thousands of products. We're proud of what we do and believe that even the smallest products have a big part to play.



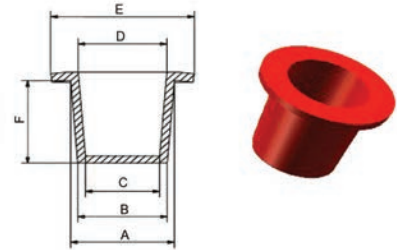
CONTENTS

| | | |
|-------------------------------------------------------------------------------------|---------------------------------------|---------|
|  | HIGH TEMPERATURE TAPERED CAPS & PLUGS | 3 |
|  | HIGH TEMPERATURE CAPS | 4 - 9 |
|  | HIGH TEMPERATURE TUBING | 9 - 10 |
|  | HIGH TEMPERATURE PLUGS | 11 - 17 |
|  | MASKING TAPES | 17 |
|  | MASKING DISCS | 18 |
|  | MASKING HOOKS | 19 |
|  | MASKING MATERIAL OPTIONS | 20 |
|  | APPLICATION WIZARDS | 21 - 22 |

HIGH TEMPERATURE TAPERED CAPS & PLUGS

Masking Tapered Series Tapered Caps or Plugs

NEW



Specifications:

- Material: Red Silicone
- Temperature Range: 600°F / 316°C
- Durometer Shore A 70 +/-5
- Structured or rigid feel
- Material: Natural Silicone
- Temperature Range: 600°F / 316°C
- Durometer Shore A 45 +/-5
- Offers extreme flexibility

Features:

- Caps or Plugs threaded or unthreaded studs or holes
- Offers all the versatility of Essentra's traditional tapered polyethylene parts with the higher temperature and corrosion resistance properties of silicone material

| Item No. | | Refer to for Plug | | | | Refer to for Cap | | | | E | | F | | Pack Qty. |
|----------|----------|-------------------|-------|-------|-------|------------------|-------|-------|-------|-------|-------|-------|-------|-----------|
| Red | Natural | A | | B | | C | | D | | E | | F | | |
| | | in | mm | in | mm | in | mm | in | mm | in | mm | in | mm | |
| 20546571 | 20546854 | 0.182 | 4.62 | 0.116 | 2.95 | 0.053 | 1.35 | 0.120 | 3.05 | 0.330 | 8.38 | 0.380 | 9.65 | 1000 |
| 20546588 | 20546861 | 0.240 | 6.10 | 0.173 | 4.39 | 0.111 | 2.82 | 0.177 | 4.50 | 0.400 | 10.16 | 0.380 | 9.65 | 1000 |
| 20546595 | 20546878 | 0.295 | 7.49 | 0.240 | 6.10 | 0.174 | 4.42 | 0.240 | 6.10 | 0.460 | 11.68 | 0.380 | 9.65 | 1000 |
| 20546601 | 20546885 | 0.365 | 9.27 | 0.299 | 7.59 | 0.235 | 5.97 | 0.302 | 7.67 | 0.520 | 13.21 | 0.380 | 9.65 | 1000 |
| 20546618 | 20546892 | 0.367 | 9.32 | 0.325 | 8.25 | 0.263 | 6.68 | 0.305 | 7.75 | 0.500 | 12.70 | 0.190 | 4.83 | 1000 |
| 20546625 | 20546908 | 0.418 | 10.62 | 0.361 | 9.17 | 0.298 | 7.57 | 0.365 | 9.27 | 0.580 | 14.73 | 0.380 | 9.65 | 1000 |
| 20546632 | 20546915 | 0.485 | 12.32 | 0.419 | 10.64 | 0.356 | 9.04 | 0.422 | 10.72 | 0.650 | 16.51 | 0.380 | 9.65 | 1000 |
| 20546649 | 20546922 | 0.536 | 13.61 | 0.471 | 11.96 | 0.409 | 10.39 | 0.485 | 12.32 | 0.710 | 18.03 | 0.440 | 11.18 | 1000 |
| 20546656 | 20546939 | 0.608 | 15.44 | 0.532 | 13.51 | 0.468 | 11.89 | 0.545 | 13.84 | 0.770 | 19.56 | 0.440 | 11.18 | 500 |
| 20546663 | 20546946 | 0.667 | 16.94 | 0.580 | 14.73 | 0.518 | 13.16 | 0.605 | 15.37 | 0.830 | 21.08 | 0.500 | 12.70 | 500 |
| 20546670 | 20546953 | 0.727 | 18.47 | 0.640 | 16.26 | 0.578 | 14.68 | 0.664 | 16.87 | 0.900 | 22.86 | 0.500 | 12.70 | 500 |
| 20546687 | 20546960 | 0.788 | 20.02 | 0.690 | 17.53 | 0.628 | 15.95 | 0.726 | 18.44 | 0.960 | 24.38 | 0.560 | 14.22 | 500 |
| 20546694 | 20546977 | 0.848 | 21.54 | 0.750 | 19.05 | 0.687 | 17.45 | 0.785 | 19.94 | 1.020 | 25.91 | 0.560 | 14.22 | 500 |
| 20546700 | 20546984 | 0.911 | 23.14 | 0.802 | 20.37 | 0.740 | 18.80 | 0.849 | 21.56 | 1.080 | 27.43 | 0.630 | 16.00 | 200 |
| 20546717 | 20546991 | 0.975 | 24.76 | 0.866 | 22.00 | 0.803 | 20.40 | 0.912 | 23.16 | 1.150 | 29.21 | 0.630 | 16.00 | 200 |
| 20546724 | 20547004 | 1.090 | 27.69 | 0.964 | 24.49 | 0.901 | 22.89 | 1.027 | 26.09 | 1.270 | 32.26 | 0.750 | 19.05 | 200 |
| 20546731 | 20547011 | 1.215 | 30.86 | 1.094 | 27.79 | 1.031 | 26.19 | 1.152 | 29.26 | 1.430 | 36.32 | 0.750 | 19.05 | 200 |
| 20546748 | 20547028 | 1.355 | 34.42 | 1.224 | 31.09 | 1.161 | 29.49 | 1.292 | 32.82 | 1.520 | 38.61 | 0.750 | 19.05 | 200 |
| 20546755 | 20547035 | 1.465 | 37.21 | 1.312 | 33.32 | 1.249 | 31.72 | 1.402 | 35.61 | 1.650 | 41.91 | 0.880 | 22.35 | 200 |
| 20546762 | 20547042 | 1.600 | 40.64 | 1.447 | 36.75 | 1.384 | 35.15 | 1.537 | 39.04 | 1.770 | 44.96 | 0.880 | 22.35 | 100 |
| 20546779 | 20547059 | 1.682 | 42.72 | 1.560 | 39.62 | 1.498 | 38.05 | 1.620 | 41.15 | 1.900 | 48.26 | 0.750 | 19.05 | 100 |
| 20546786 | 20547066 | 1.880 | 47.75 | 1.750 | 44.45 | 1.688 | 42.88 | 1.818 | 46.18 | 2.020 | 51.31 | 0.750 | 19.05 | 100 |
| 20546793 | 20547073 | 1.950 | 49.53 | 1.780 | 45.21 | 1.718 | 43.64 | 1.888 | 47.96 | 2.150 | 54.61 | 1.000 | 25.40 | 100 |
| 20546809 | 20547080 | 2.076 | 52.73 | 1.900 | 48.26 | 1.837 | 46.66 | 2.013 | 51.13 | 2.270 | 57.66 | 1.000 | 25.40 | 100 |
| 20546816 | 20547097 | 2.210 | 56.13 | 2.035 | 51.69 | 1.976 | 50.19 | 2.153 | 54.69 | 2.360 | 59.94 | 1.000 | 25.40 | 100 |
| 20546823 | 20547103 | 2.430 | 61.72 | 2.255 | 57.28 | 2.196 | 55.78 | 2.373 | 60.27 | 2.580 | 65.53 | 1.000 | 25.40 | 50 |
| 20546830 | 20547110 | 2.700 | 68.58 | 2.525 | 64.13 | 2.466 | 62.64 | 2.643 | 67.13 | 2.850 | 72.39 | 1.000 | 25.40 | 50 |
| 20546847 | 20547127 | 2.940 | 74.68 | 2.765 | 70.23 | 2.706 | 68.73 | 2.883 | 73.23 | 3.090 | 78.49 | 1.000 | 25.40 | 50 |

TRY BEFORE YOU BUY

Visit www.essentracomponents.com to

- Order FREE Samples
- Download FREE CAD Drawings
- Shop Our Entire Product Range

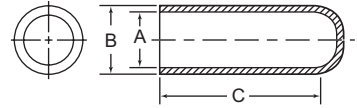


HIGH TEMPERATURE CAPS

SC Series Straight Masking Caps

Specifications:

- Silicone Silicone 600°F (316°C)
- EPDM 425°F (218°C)
- Hardness: Durometer (Shore A) 55 ± 5
- Color: See Table



See pages 21 and 22 for Application Wia rds

Features:

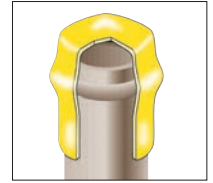
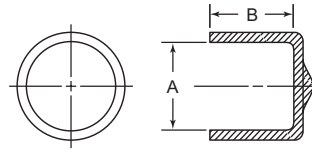
- Excellent sealing due to flexible material
- Masking for studs and tube ends
- Although designed as a cap, can be used to plug holes if inserted
- Silicone: premium masking material (due to high temperature and chemical resistance) can be used multiple times; available in natural and mixed colors for color coding applications
- EPDM: a more economical material with reduced heat resistance; also reusable
- Applications: Powder Coating, E-Coating, Plating, Anodizing and Blasting



| Item No. | Item No. | Color | Item No. | Caps Std Threads | | A | | B | | C | | Bulk Pack Qty | Color Bulk Pack Qty |
|------------------|------------|--------|-------------|------------------|-----|-------|------|-------|------|-------|------|---------------|---------------------|
| Silicone Natural | Silicone | Color | EPDM Black | UNC | M | in | mm | in | mm | in | mm | | |
| SC002005A | — | — | SC002005B | — | — | 0.020 | 0.5 | 0.140 | 3.6 | 0.500 | 12.7 | 1000 | — |
| SC003505A | — | — | SC003505B | — | — | 0.035 | 0.9 | 0.130 | 3.3 | 0.500 | 12.7 | 1000 | — |
| SC004007A | — | — | SC004007B | — | — | 0.040 | 1.0 | 0.130 | 3.3 | 0.750 | 19.1 | 1000 | — |
| SC006207A | — | — | SC006207C | — | — | 0.062 | 1.6 | 0.152 | 3.9 | 0.750 | 19.1 | 1000 | — |
| — | • SC006210 | Blue | — | — | — | 0.062 | 1.6 | 0.152 | 3.9 | 1.000 | 25.4 | — | 1000 |
| SC007010A | — | — | SC007010B | 2-56 | M2 | 0.070 | 1.8 | 0.160 | 4.1 | 1.000 | 25.4 | 1000 | — |
| SC008007A | — | — | SC008007B | — | — | 0.080 | 2.0 | 0.200 | 5.1 | 0.750 | 19.1 | 1000 | — |
| SC009307A | — | — | SC009307B | 3-48 | — | 0.093 | 2.4 | 0.193 | 4.9 | 0.750 | 19.1 | 1000 | — |
| — | • SC009310 | White | — | 3-48 | — | 0.093 | 2.4 | 0.193 | 4.9 | 1.000 | 25.4 | — | 1000 |
| SC010005A | — | — | SC010005B | 4-40 | — | 0.100 | 2.5 | 0.200 | 5.1 | 0.500 | 12.7 | 1000 | — |
| SC010010A | • SC010010 | Green | SC010010C | 4-40 | — | 0.100 | 2.5 | 0.200 | 5.1 | 1.000 | 25.4 | 1000 | 1000 |
| SC010907A | • SC010907 | Grey | SC010907C | 5-40 | M3 | 0.109 | 2.8 | 0.209 | 5.3 | 0.750 | 19.1 | 1000 | 1000 |
| SC012510A | — | — | SC012510C | 6-32 | — | 0.125 | 3.2 | 0.225 | 5.7 | 1.000 | 25.4 | 1000 | — |
| SC014010A | • SC014010 | White | SC014010C | — | — | 0.140 | 3.6 | 0.260 | 6.6 | 1.000 | 25.4 | 1000 | 1000 |
| SC014810A | • SC014810 | Pink | SC014810C | — | M4 | 0.148 | 3.8 | 0.248 | 6.3 | 1.000 | 25.4 | 1000 | 1000 |
| SC015605A | — | — | SC015605B | 8-32 | M4 | 0.156 | 4.0 | 0.276 | 7.0 | 0.500 | 12.7 | 1000 | — |
| SC015610A | • SC015610 | Yellow | SC015610C | 8-32 | M4 | 0.156 | 4.0 | 0.276 | 7.0 | 1.000 | 25.4 | 1000 | 1000 |
| SC017205A | — | — | SC017205B | 10-24 | — | 0.172 | 4.4 | 0.292 | 7.4 | 0.500 | 12.7 | 1000 | — |
| SC017210A | • SC017210 | Blue | SC017210B | — | — | 0.172 | 4.4 | 0.292 | 7.4 | 1.000 | 25.4 | 1000 | 1000 |
| SC018010A | — | — | SC018010C | — | — | 0.180 | 4.6 | 0.300 | 7.6 | 1.000 | 25.4 | 1000 | — |
| SC018705A | — | — | SC018705B | 12-24 | M5 | 0.187 | 4.7 | 0.307 | 7.8 | 0.500 | 12.7 | 1000 | — |
| SC018710A | — | — | SC018710B | 12-24 | M5 | 0.187 | 4.7 | 0.307 | 7.8 | 1.000 | 25.4 | 1000 | — |
| SC018715A | — | — | SC018715B | 12-24 | M5 | 0.187 | 4.7 | 0.307 | 7.8 | 1.500 | 38.1 | 1000 | — |
| SC019705A | — | — | SC019705B | — | — | 0.197 | 5.0 | 0.317 | 8.1 | 0.500 | 12.7 | 1000 | — |
| SC021810A | — | — | SC021810B | — | — | 0.218 | 5.5 | 0.338 | 8.6 | 1.000 | 25.4 | 1000 | — |
| SC022310A | — | — | SC022310B | — | M6 | 0.223 | 5.7 | 0.343 | 8.7 | 1.000 | 25.4 | 1000 | — |
| SC022315A | • SC022315 | Pink | SC022315B | — | M6 | 0.223 | 5.7 | 0.343 | 8.7 | 1.500 | 38.1 | 1000 | 1000 |
| SC023405A | — | — | SC023405B | 1/4-20 | — | 0.234 | 5.9 | 0.354 | 9.0 | 0.500 | 12.7 | 1000 | — |
| SC023410A | • SC023410 | Green | SC023410C | 1/4-20 | — | 0.234 | 5.9 | 0.354 | 9.0 | 1.000 | 25.4 | 1000 | 1000 |
| SC02341125A | — | — | SC02341125B | 1/4-20 | — | 0.234 | 5.9 | 0.354 | 9.0 | 1.125 | 28.6 | 1000 | — |
| SC023415A | — | — | SC023415B | 1/4-20 | — | 0.234 | 5.9 | 0.354 | 9.0 | 1.500 | 38.1 | 1000 | — |
| SC025010A | • SC025010 | Grey | SC025010C | — | — | 0.250 | 6.3 | 0.370 | 9.4 | 1.000 | 25.4 | 1000 | 1000 |
| SC025015A | — | — | SC025015B | — | — | 0.250 | 6.3 | 0.370 | 9.4 | 1.500 | 38.1 | 1000 | — |
| SC028110A | • SC028110 | Blue | SC028110B | 5/16-18 | — | 0.281 | 7.1 | 0.401 | 10.2 | 1.000 | 25.4 | 1000 | 500 |
| SC029505A | — | — | SC029505B | — | M8 | 0.295 | 7.5 | 0.415 | 10.5 | 0.500 | 12.7 | 1000 | — |
| SC029510A | — | — | SC029510B | — | M8 | 0.295 | 7.5 | 0.415 | 10.5 | 1.000 | 25.4 | 1000 | — |
| SC029515A | — | — | SC029515C | — | M8 | 0.295 | 7.5 | 0.415 | 10.5 | 1.500 | 38.1 | 1000 | — |
| SC029517A | — | — | SC029517B | — | M8 | 0.295 | 7.5 | 0.415 | 10.5 | 1.750 | 44.5 | 1000 | — |
| SC031210A | • SC031210 | White | SC031210C | — | — | 0.312 | 7.9 | 0.432 | 11.0 | 1.000 | 25.4 | 1000 | 500 |
| SC031215A | — | — | SC031215B | — | — | 0.312 | 7.9 | 0.432 | 11.0 | 1.500 | 38.1 | 1000 | — |
| SC034010A | • SC034010 | Pink | SC034010B | — | — | 0.340 | 8.6 | 0.460 | 11.7 | 1.000 | 25.4 | 1000 | 500 |
| SC035515A | — | — | SC035515B | 3/8-14 | — | 0.355 | 9.0 | 0.475 | 12.1 | 1.500 | 38.1 | 1000 | — |
| SC037510A | • SC037510 | Yellow | SC037510B | — | M10 | 0.375 | 9.5 | 0.495 | 12.6 | 1.000 | 25.4 | 1000 | 500 |
| SC037515A | — | — | SC037515C | — | M10 | 0.375 | 9.5 | 0.495 | 12.6 | 1.500 | 38.1 | 1000 | — |
| SC040610A | • SC040610 | Blue | SC040610B | 7/16-14 | — | 0.406 | 10.3 | 0.526 | 13.4 | 1.000 | 25.4 | 1000 | 250 |
| SC043710A | • SC043710 | Grey | SC043710B | — | — | 0.437 | 11.1 | 0.557 | 14.2 | 1.000 | 25.4 | 500 | 250 |
| SC045615A | — | — | SC045615B | — | M12 | 0.456 | 11.6 | 0.576 | 14.6 | 1.500 | 38.1 | 200 | — |
| SC046810A | • SC046810 | White | SC046810C | — | — | 0.468 | 11.9 | 0.588 | 14.9 | 1.000 | 25.4 | 200 | 250 |
| SC048015A | • SC048015 | Pink | SC048015B | 1/2-13 | — | 0.480 | 12.2 | 0.600 | 15.2 | 1.500 | 38.1 | 200 | 250 |
| SC050015A | • SC050015 | Green | SC050015C | — | — | 0.500 | 12.7 | 0.620 | 15.8 | 1.500 | 38.1 | 200 | 250 |
| SC053515A | • SC053515 | Yellow | SC053515B | 9/16-12 | M14 | 0.535 | 13.6 | 0.655 | 16.6 | 1.500 | 38.1 | 200 | 250 |
| SC056215A | • SC056215 | Blue | SC056215B | — | M15 | 0.562 | 14.3 | 0.682 | 17.3 | 1.500 | 38.1 | 200 | 250 |
| SC060015A | • SC060015 | Grey | SC060015C | 5/8-11 | M16 | 0.600 | 15.2 | 0.720 | 18.3 | 1.500 | 38.1 | 200 | 250 |
| SC062515A | — | — | SC062515B | — | M17 | 0.625 | 15.9 | 0.745 | 18.9 | 1.500 | 38.1 | 200 | — |
| SC062525A | — | — | SC062525B | — | M17 | 0.625 | 15.9 | 0.745 | 18.9 | 2.500 | 63.5 | 100 | — |
| SC068715A | • SC068715 | Pink | SC068715B | — | — | 0.687 | 17.4 | 0.807 | 20.5 | 1.500 | 38.1 | 200 | 100 |
| SC073015A | • SC073015 | Green | SC073015B | 3/4-10 | M19 | 0.730 | 18.5 | 0.850 | 21.6 | 1.500 | 38.1 | 200 | 100 |
| SC075015A | • SC075015 | Yellow | SC075015B | — | — | 0.750 | 19.1 | 0.870 | 22.1 | 1.500 | 38.1 | 200 | 100 |
| SC075035A | — | — | SC075035B | — | — | 0.750 | 19.1 | 0.870 | 22.1 | 3.500 | 88.9 | 200 | — |
| SC078015A | • SC078015 | Blue | SC078015B | — | — | 0.780 | 19.8 | 0.900 | 22.9 | 1.500 | 38.1 | 200 | 100 |
| SC081215A | • SC081215 | Grey | SC081215B | — | — | 0.812 | 20.6 | 0.932 | 23.7 | 1.500 | 38.1 | 200 | 100 |
| SC087515A | — | — | SC087515B | — | — | 0.875 | 22.2 | 0.995 | 25.3 | 1.500 | 38.1 | 200 | — |
| SC093715A | • SC093715 | White | SC093715B | — | M24 | 0.937 | 23.8 | 1.057 | 26.9 | 1.500 | 38.1 | 100 | 100 |
| SC097015A | • SC097015 | Pink | SC097015B | 1-8 | M25 | 0.970 | 24.6 | 1.090 | 27.7 | 1.500 | 38.1 | 100 | 100 |
| SC100015A | SC100015 | Green | SC100015B | — | M27 | 1.000 | 25.4 | 1.120 | 28.5 | 1.500 | 38.1 | 100 | 100 |
| SC106215A | — | — | SC106215B | — | — | 1.062 | 26.0 | 1.182 | 30.0 | 1.500 | 38.1 | 100 | — |
| SC106220A | • SC106220 | Grey | SC106220B | — | — | 1.062 | 26.0 | 1.182 | 30.0 | 2.000 | 50.8 | 100 | 100 |
| SC112515A | • SC112515 | Blue | SC112515B | — | M30 | 1.125 | 28.6 | 1.245 | 31.6 | 1.500 | 38.1 | 100 | 100 |
| SC118715A | • SC118715 | Yellow | SC118715B | — | — | 1.187 | 30.1 | 1.307 | 33.2 | 1.500 | 38.1 | 100 | 100 |
| SC125015A | — | — | SC125015B | 1 1/4-7 | M33 | 1.250 | 31.8 | 1.370 | 34.8 | 1.500 | 38.1 | 100 | — |
| SC135017A | • SC135017 | White | SC135017B | — | — | 1.350 | 34.3 | 1.470 | 37.3 | 1.750 | 44.4 | 100 | 100 |
| SC150017A | • SC150017 | Green | SC150017B | 1 1/4-7 | M39 | 1.500 | 38.1 | 1.620 | 41.2 | 1.750 | 44.4 | 100 | 50 |
| SC162520A | — | — | SC162520B | — | — | 1.625 | 41.3 | 1.745 | 44.3 | 2.000 | 50.8 | 100 | — |
| SC175020A | • SC175020 | Yellow | SC175020B | 1 3/4-5 | — | 1.750 | 44.4 | 1.870 | 47.5 | 2.000 | 50.8 | 100 | 50 |
| SC187520A | • SC187520 | Grey | SC187520B | — | — | 1.875 | 47.6 | 1.995 | 50.7 | 2.000 | 50.8 | 50 | 50 |
| SC200020A | • SC200020 | Blue | SC200020B | 2-4 1/2 | — | 2.000 | 50.8 | 2.120 | 53.9 | 2.000 | 50.8 | 50 | 50 |

HIGH TEMPERATURE CAPS

DM(HT) Series High Temperature Vinyl Caps



Specifications:

- Material: High Temperature Soft Vinyl 425°F (218°C)
- Color: Yellow
- Hardness: Durameter of 85 +/-2

Features:

- Excellent chemical resistance
- Economical solution for one-time uses
- Applications: Powder Coating, E-Coating, Plating and General Paint Lines

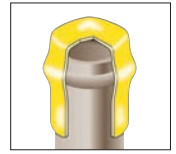
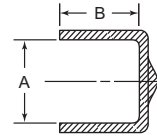
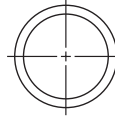
See pages 21 and 22 for Application Warnings

| A = To Fit | | Item No. by Length of Cap (B Dimension) | | | Bulk Pack Qty | | |
|------------|------|-----------------------------------------|--------------|------------------|---------------|------|--------|
| in | mm | 1/2" (12.70 mm) | 1" (24.4 mm) | 1-1/2" (38.1 mm) | 1/2" | 1" | 1-1/2" |
| 0.078 | 2.0 | DM0080-1/2B | DM0080-1B | — | 5000 | 5000 | — |
| 0.094 | 2.4 | DM0093-1/2C | DM0093-1B | — | 5000 | 5000 | — |
| 0.109 | 2.8 | DM0110-1/2C | DM0110-1C | — | 5000 | 5000 | — |
| 0.125 | 3.2 | DM0125-1/2D | DM0125-1D | — | 5000 | 5000 | — |
| 0.141 | 3.6 | DM0140-1/2D | DM0140-1C | DM0140-1-1/2B | 5000 | 5000 | 5000 |
| 0.148 | 3.8 | DM0148-1/2B | DM0148-1B | DM0148-1-1/2B | 5000 | 5000 | 5000 |
| 0.156 | 4.0 | DM0156-1/2E | DM0156-1C | DM0156-1-1/2B | 5000 | 5000 | 5000 |
| 0.172 | 4.4 | DM0172-1/2D | DM0172-1C | DM0172-1-1/2B | 5000 | 5000 | 5000 |
| 0.180 | 4.6 | DM0180-1/2B | DM0180-1C | DM0180-1-1/2B | 5000 | 5000 | 5000 |
| 0.187 | 4.8 | DM0187-1/2C | DM0187-1E | DM0187-1-1/2B | 5000 | 5000 | 5000 |
| 0.203 | 5.2 | DM0203-1/2C | DM0203-1B | DM0203-1-1/2B | 5000 | 5000 | 5000 |
| 0.207 | 5.3 | DM0207-1/2G | DM0207-1B | DM0207-1-1/2C | 5000 | 5000 | 5000 |
| 0.218 | 5.5 | DM0218-1/2B | DM0218-1B | DM0218-1-1/2B | 5000 | 5000 | 5000 |
| 0.224 | 5.7 | DM0224-1/2B | DM0224-1B | DM0224-1-1/2B | 5000 | 5000 | 5000 |
| 0.230 | 5.8 | DM0230-1/2B | DM0230-1C | DM0230-1-1/2B | 5000 | 7500 | 5000 |
| 0.234 | 6.0 | DM0234-1/2D | DM0234-1D | DM0234-1-1/2C | 5000 | 5000 | 3000 |
| 0.240 | 6.1 | DM0240-1/2E | DM0240-1C | DM0240-1-1/2C | 5000 | 5000 | 5000 |
| 0.250 | 6.4 | DM0250-1/2E | DM0250-1D | DM0250-1-1/2B | 5000 | 5000 | 5000 |
| 0.281 | 7.1 | DM0281-1/2D | DM0281-1C | DM0281-1-1/2C | 5000 | 5000 | 5000 |
| 0.290 | 7.4 | DM0290-1/2B | DM0290-1B | DM0290-1-1/2B | 5000 | 5000 | 5000 |
| 0.304 | 7.7 | DM0304-1/2B | DM0304-1C | DM0304-1-1/2B | 5000 | 5000 | 2500 |
| 0.313 | 7.9 | DM0313-1/2E | DM0313-1F | DM0313-1-1/2C | 5000 | 5000 | 4000 |
| 0.343 | 8.7 | DM0343-1/2C | DM0343-1C | DM0343-1-1/2B | 5000 | 5000 | 4000 |
| 0.360 | 9.1 | DM0360-1/2B | DM0360-1C | DM0360-1-1/2B | 5000 | 5000 | 2500 |
| 0.375 | 9.5 | DM0375-1/2D | DM0375-1F | DM0375-1-1/2D | 5000 | 5000 | 2500 |
| 0.406 | 10.3 | DM0406-1/2C | DM0406-1E | DM0406-1-1/2E | 5000 | 5000 | 5000 |
| 0.437 | 11.1 | DM0437-1/2J | DM0437-1E | DM0437-1-1/2E | 5000 | 5000 | 4000 |
| 0.460 | 11.7 | DM0460-1/2B | DM0460-1B | DM0460-1-1/2B | 5000 | 3000 | 1500 |
| 0.470 | 11.9 | DM0470-1/2C | DM0470-1D | DM0470-1-1/2E | 5000 | 5000 | 3000 |
| 0.490 | 12.5 | DM0490-1/2B | DM0490-1B | DM0490-1-1/2B | 5000 | 3000 | 1500 |
| 0.500 | 12.7 | DM0500-1/2F | DM0500-1E | DM0500-1-1/2F | 5000 | 5000 | 2500 |
| 0.523 | 13.3 | DM0523-1/2B | DM0523-1B | DM0523-1-1/2B | 5000 | 2500 | 2500 |
| 0.531 | 13.5 | DM0531-1/2D | DM0531-1C | DM0531-1-1/2C | 5000 | 5000 | 2500 |
| 0.544 | 13.8 | DM0544-1/2B | DM0544-1C | DM0544-1-1/2C | 5000 | 5000 | 2500 |
| 0.562 | 14.3 | DM0562-1/2F | DM0562-1D | DM0562-1-1/2E | 5000 | 2500 | 3000 |
| 0.587 | 14.9 | DM0587-1/2B | DM0587-1B | DM0587-1-1/2B | 5000 | 2500 | 1200 |
| 0.600 | 15.2 | DM0600-1/2B | DM0600-1B | DM0600-1-1/2B | 5000 | 2000 | 1200 |
| 0.625 | 15.9 | DM0625-1/2E | DM0625-1F | DM0625-1-1/2E | 5000 | 2500 | 1250 |
| 0.640 | 16.3 | DM0640-1/2B | DM0640-1B | DM0640-1-1/2B | 5000 | 5000 | 2500 |
| 0.665 | 16.9 | DM0665-1/2B | DM0665-1B | DM0665-1-1/2B | 5000 | 2500 | 2500 |
| 0.687 | 17.5 | DM0687-1/2D | DM0687-1E | DM0687-1-1/2B | 5000 | 2500 | 1500 |
| 0.725 | 18.4 | DM0725-1/2B | DM0725-1B | DM0725-1-1/2B | 5000 | 2500 | 1000 |
| 0.750 | 19.1 | DM0750-1/2F | DM0750-1F | DM0750-1-1/2D | 5000 | 2500 | 500 |
| 0.812 | 20.6 | DM0812-1/2E | DM0812-1D | DM0812-1-1/2D | 2500 | 2500 | 1000 |
| 0.843 | 21.4 | DM0843-1/2B | DM0843-1B | DM0843-1-1/2B | 5000 | 2500 | 1200 |
| 0.875 | 22.2 | DM0875-1/2D | DM0875-1E | DM0875-1-1/2B | 5000 | 2500 | 1250 |
| 0.937 | 23.8 | DM0937-1/2C | DM0937-1J | DM0937-1-1/2C | 2500 | 2500 | 1000 |
| 0.985 | 25.0 | DM0985-1/2B | DM0985-1B | DM0985-1-1/2B | 2500 | 1500 | 1250 |
| 1.000 | 25.4 | DM1000-1/2D | DM1000-1E | DM1000-1-1/2F | 2500 | 2000 | 1250 |
| 1.062 | 27.0 | DM1062-1/2D | DM1062-1E | DM1062-1-1/2B | 3000 | 1500 | 1250 |
| 1.090 | 27.7 | DM1090-1/2B | DM1090-1B | DM1090-1-1/2B | 2000 | 1000 | 500 |
| 1.125 | 28.6 | DM1125-1/2B | DM1125-1D | DM1125-1-1/2C | 1000 | 1000 | 500 |
| 1.187 | 30.2 | DM1187-1/2B | DM1187-1B | DM1187-1-1/2B | 2500 | 1000 | 1000 |

(Continued on next page >)

HIGH TEMPERATURE CAPS

DM(HT) Series (Continued)
High Temperature Vinyl Caps

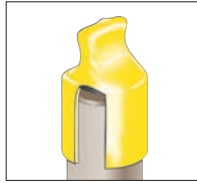


See pages 21 and 22 for Application Wizard

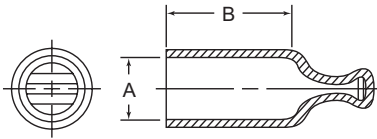
| A = To Fit | | Item No. by Length of Cap (B Dimension) | | | | Bulk Pack Qty | | |
|------------|-------|-----------------------------------------|--------------|------------------|------|---------------|--------|--|
| in | mm | 1/2" (12.70 mm) | 1" (24.4 mm) | 1-1/2" (38.1 mm) | 1/2" | 1" | 1-1/2" | |
| 1.250 | 31.8 | DM1250-1/2C | DM1250-1D | DM1250-1-1/2C | 2500 | 1000 | 700 | |
| 1.312 | 33.3 | DM1312-1/2B | DM1312-1B | DM1312-1-1/2B | 2000 | 1000 | 500 | |
| 1.375 | 34.9 | DM1375-1/2B | DM1375-1D | DM1375-1-1/2E | 2000 | 1000 | 650 | |
| 1.437 | 36.5 | DM1437-1/2B | DM1437-1B | DM1437-1-1/2B | 1000 | 1000 | 600 | |
| 1.500 | 38.1 | DM1500-1/2C | DM1500-1E | DM1500-1-1/2C | 1000 | 1000 | 600 | |
| 1.593 | 40.5 | DM1593-1/2B | DM1593-1B | DM1593-1-1/2B | 1700 | 1000 | 500 | |
| 1.625 | 41.3 | DM1625-1/2D | DM1625-1H | DM1625-1-1/2B | 500 | 750 | 500 | |
| 1.687 | 42.9 | DM1687-1/2B | DM1687-1B | DM1687-1-1/2B | 1000 | 500 | 400 | |
| 1.750 | 44.5 | DM1750-1/2C | DM1750-1D | DM1750-1-1/2E | 1000 | 500 | 500 | |
| 1.812 | 46.0 | DM1812-1/2B | DM1812-1B | DM1812-1-1/2B | 1000 | 500 | 400 | |
| 1.875 | 47.6 | DM1875-1/2C | DM1875-1D | DM1875-1-1/2F | 700 | 625 | 400 | |
| 1.937 | 49.2 | DM1937-1/2B | DM1937-1B | DM1937-1-1/2B | 1000 | 550 | 400 | |
| 2.000 | 50.8 | DM2000-1/2C | DM2000-1E | DM2000-1-1/2E | 1000 | 550 | 400 | |
| 2.125 | 54.0 | DM2125-1/2B | DM2125-1B | DM2125-1-1/2B | 500 | 400 | 300 | |
| 2.156 | 54.8 | DM2156-1/2B | DM2156-1B | DM2156-1-1/2B | 1000 | 550 | 250 | |
| 2.250 | 57.2 | DM2250-1/2B | DM2250-1C | DM2250-1-1/2B | 250 | 500 | 300 | |
| 2.375 | 60.3 | DM2375-1/2B | DM2375-1C | DM2375-1-1/2C | 500 | 350 | 250 | |
| 2.460 | 62.5 | DM2460-1/2B | DM2460-1B | DM2460-1-1/2B | 1000 | 350 | 200 | |
| 2.500 | 63.5 | DM2500-1/2C | DM2500-1B | DM2500-1-1/2B | 500 | 300 | 200 | |
| 2.625 | 66.7 | DM2625-1/2B | DM2625-1B | DM2625-1-1/2D | 500 | 250 | 250 | |
| 2.687 | 68.3 | DM2687-1/2B | DM2687-1B | DM2687-1-1/2B | 400 | 250 | 200 | |
| 2.750 | 69.9 | DM2750-1/2B | DM2750-1B | DM2750-1-1/2B | 500 | 250 | 250 | |
| 2.875 | 73.0 | DM2875-1/2B | DM2875-1B | DM2875-1-1/2B | 500 | 250 | 200 | |
| 3.000 | 76.2 | DM3000-1/2B | DM3000-1D | DM3000-1-1/2B | 500 | 300 | 200 | |
| 1.812 | 46.0 | DM1812-1/2B | DM1812-1B | DM1812-1-1/2B | 1000 | 500 | 400 | |
| 1.875 | 47.6 | DM1875-1/2C | DM1875-1D | DM1875-1-1/2F | 700 | 625 | 400 | |
| 1.937 | 49.2 | DM1937-1/2B | DM1937-1B | DM1937-1-1/2B | 1000 | 550 | 400 | |
| 2.000 | 50.8 | DM2000-1/2C | DM2000-1E | DM2000-1-1/2E | 1000 | 550 | 400 | |
| 2.125 | 54.0 | DM2125-1/2B | DM2125-1B | DM2125-1-1/2B | 500 | 400 | 300 | |
| 2.156 | 54.8 | DM2156-1/2B | DM2156-1B | DM2156-1-1/2B | 1000 | 550 | 250 | |
| 2.250 | 57.2 | DM2250-1/2B | DM2250-1C | DM2250-1-1/2B | 250 | 500 | 300 | |
| 2.375 | 60.3 | DM2375-1/2B | DM2375-1C | DM2375-1-1/2C | 500 | 350 | 250 | |
| 2.460 | 62.5 | DM2460-1/2B | DM2460-1B | DM2460-1-1/2B | 1000 | 350 | 200 | |
| 2.500 | 63.5 | DM2500-1/2C | DM2500-1B | DM2500-1-1/2B | 500 | 300 | 200 | |
| 2.625 | 66.7 | DM2625-1/2B | DM2625-1B | DM2625-1-1/2D | 500 | 250 | 250 | |
| 2.687 | 68.3 | DM2687-1/2B | DM2687-1B | DM2687-1-1/2B | 400 | 250 | 200 | |
| 2.750 | 69.9 | DM2750-1/2B | DM2750-1B | DM2750-1-1/2B | 500 | 250 | 250 | |
| 2.875 | 73.0 | DM2875-1/2B | DM2875-1B | DM2875-1-1/2B | 500 | 250 | 200 | |
| 3.000 | 76.2 | DM3000-1/2B | DM3000-1D | DM3000-1-1/2B | 500 | 300 | 200 | |
| 3.125 | 79.4 | — | DM3125-1B | DM3125-1-1/2B | — | 250 | 150 | |
| 3.250 | 82.6 | — | DM3250-1B | DM3250-1-1/2B | — | 100 | 100 | |
| 3.375 | 85.7 | — | DM3375-1B | DM3375-1-1/2B | — | 200 | 150 | |
| 3.500 | 88.9 | — | DM3500-1B | DM3500-1-1/2B | — | 175 | 100 | |
| 3.625 | 92.1 | — | DM3625-1B | DM3625-1-1/2B | — | 150 | 100 | |
| 3.750 | 95.3 | — | DM3750-1B | DM3750-1-1/2B | — | 100 | 100 | |
| 3.825 | 97.2 | — | DM3825-1C | DM3825-1-1/2B | — | 150 | 100 | |
| 3.875 | 98.4 | — | DM3875-1B | DM3875-1-1/2B | — | 100 | 100 | |
| 4.000 | 101.6 | — | DM4000-1B | DM4000-1-1/2B | — | 150 | 100 | |
| 4.125 | 104.8 | — | DM4125-1B | DM4125-1-1/2B | — | 100 | 100 | |
| 4.187 | 106.3 | — | DM4187-1B | DM4187-1-1/2B | — | 100 | 100 | |
| 4.250 | 108.0 | — | DM4250-1B | DM4250-1-1/2B | — | 150 | 100 | |
| 4.375 | 111.1 | — | DM4375-1B | DM4375-1-1/2B | — | 100 | 50 | |
| 4.500 | 114.3 | — | DM4500-1B | DM4500-1-1/2B | — | 150 | 75 | |
| 4.750 | 120.7 | — | DM4750-1B | DM4750-1-1/2B | — | 85 | 100 | |
| 5.000 | 127.0 | — | DM5000-1C | DM5000-1-1/2B | — | 125 | 50 | |
| 5.187 | 131.7 | — | DM5187-1B | DM5187-1-1/2B | — | 50 | 50 | |
| 5.375 | 136.5 | — | DM5375-1B | DM5375-1-1/2B | — | 100 | 50 | |
| 5.500 | 139.7 | — | DM5500-1B | DM5500-1-1/2B | — | 50 | 50 | |
| 5.750 | 146.1 | — | DM5750-1B | DM5750-1-1/2B | — | 50 | 50 | |
| 6.000 | 152.4 | — | DM6000-1B | DM6000-1-1/2B | — | 50 | 50 | |
| 6.250 | 158.8 | — | DM6250-1B | DM6250-1-1/2B | — | 50 | 50 | |
| 6.500 | 165.1 | — | DM6500-1B | DM6500-1-1/2B | — | 50 | 50 | |
| 6.750 | 171.5 | — | DM6750-1B | DM6750-1-1/2B | — | 25 | 50 | |
| 7.000 | 177.8 | — | DM7000-1B | DM7000-1-1/2B | — | 25 | 25 | |
| 7.250 | 184.2 | — | DM7250-1B | DM7250-1-1/2B | — | 50 | 50 | |
| 7.500 | 190.5 | — | DM7500-1B | DM7500-1-1/2B | — | 50 | 25 | |
| 7.750 | 196.9 | — | DM7750-1B | DM7750-1-1/2B | — | 50 | 50 | |
| 8.000 | 203.2 | — | DM8000-1B | DM8000-1-1/2B | — | 50 | 25 | |

HIGH TEMPERATURE CAPS

DMPC(HT) Series High Temperature Vinyl Pull Caps



See pages 21 and 22 for Application Wia rds



Specifications:

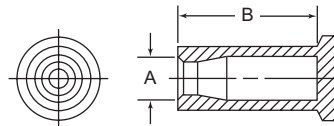
- High Temperature Soft Vinyl 425°F (218°C)
- Color: Yellow
- Hardness: Durometer of 85 +/-2
- Alternative Material: Lower Temp Black Vinyl available (see page 25)

Features:

- Ergonomic finger pull tab for easy removal
- Excellent chemical resistance
- Economical solution for one-time uses
- Applications: Powder Coating, E-Coating, Plating, and General Paint Lines

| A = To Fit | | Item No. by Length of Cap (B Dimension) | | | Bulk Pack Qty | | |
|------------|------|-----------------------------------------|--------------|------------------|---------------|------|--------|
| in | mm | 1/2" (12.70 mm) | 1" (24.4 mm) | 1-1/2" (38.1 mm) | 1/2" | 1" | 1-1/2" |
| 0.187 | 4.8 | DMPC0180-1/2B | DMPC0180-1B | — | 5000 | 5000 | — |
| 0.218 | 5.5 | DMPC0207-1/2D | DMPC0207-1D | — | 5000 | 5000 | — |
| 0.250 | 6.4 | DMPC0240-1/2E | DMPC0240-1C | — | 5000 | 5000 | — |
| 0.313 | 7.9 | DMPC0302-1/2G | DMPC0302-1D | DMPC0302-1-1/2B | 7500 | 5000 | 2500 |
| 0.320 | 8.1 | DMPC0320-1/2B | DMPC0320-1B | DMPC0320-1-1/2B | 5000 | 5000 | 2500 |
| 0.343 | 8.7 | DMPC0343-1/2B | DMPC0343-1B | DMPC0343-1-1/2B | 5000 | 3000 | 2500 |
| 0.375 | 9.5 | DMPC0365-1/2E | DMPC0365-1G | DMPC0365-1-1/2B | 5000 | 3000 | 2000 |
| 0.406 | 10.3 | DMPC0396-1/2G | DMPC0396-1D | DMPC0396-1-1/2B | 5000 | 5000 | 2500 |
| 0.420 | 10.7 | DMPC0420-1/2B | DMPC0420-1B | DMPC0420-1-1/2B | 5000 | 5000 | 2500 |
| 0.437 | 11.1 | DMPC0427-1/2F | DMPC0427-1G | DMPC0427-1-1/2C | 5000 | 4000 | 2500 |
| 0.450 | 11.4 | DMPC0450-1/2B | DMPC0450-1B | DMPC0450-1-1/2B | 5000 | 4000 | 2500 |
| 0.472 | 12.0 | DMPC0470-1/2C | DMPC0470-1D | DMPC0470-1-1/2C | 5000 | 4000 | 2500 |
| 0.500 | 12.7 | DMPC0490-1/2D | DMPC0490-1F | DMPC0490-1-1/2D | 5000 | 4000 | 2000 |
| 0.531 | 13.5 | DMPC0521-1/2C | DMPC0521-1C | DMPC0521-1-1/2B | 5000 | 4000 | 2500 |
| 0.562 | 14.3 | DMPC0552-1/2D | DMPC0552-1C | DMPC0552-1-1/2B | 2500 | 2500 | 2500 |
| 0.593 | 15.1 | DMPC0590-1/2C | DMPC0590-1C | DMPC0590-1-1/2B | 2500 | 1900 | 1500 |
| 0.600 | 15.2 | DMPC0600-1/2D | DMPC0600-1F | DMPC0600-1-1/2B | 5000 | 2500 | 2500 |
| 0.625 | 15.9 | DMPC0625-1/2C | DMPC0625-1F | DMPC0625-1-1/2D | 2500 | 1350 | 1500 |
| 0.655 | 16.6 | DMPC0655-1/2D | DMPC0655-1D | DMPC0655-1-1/2B | 2000 | 2500 | 1500 |
| 0.677 | 17.2 | DMPC0677-1/2B | DMPC0677-1C | DMPC0677-1-1/2B | 5000 | 2500 | 1500 |
| 0.687 | 17.5 | DMPC0687-1/2G | DMPC0687-1E | DMPC0687-1-1/2B | 2500 | 2000 | 1500 |
| 0.708 | 18.0 | DMPC0708-1/2B | DMPC0708-1B | DMPC0708-1-1/2B | 2500 | 2000 | 1500 |
| 0.750 | 19.1 | DMPC0740-1/2C | DMPC0740-1D | DMPC0740-1-1/2C | 4000 | 2500 | 1500 |
| 0.812 | 20.6 | DMPC0812-1/2D | DMPC0812-1D | DMPC0812-1-1/2C | 2500 | 2000 | 750 |
| 0.875 | 22.2 | DMPC0865-1/2D | DMPC0865-1B | DMPC0865-1-1/2B | 1500 | 1500 | 750 |
| 0.937 | 23.8 | DMPC0937-1/2B | DMPC0937-1B | DMPC0937-1-1/2B | 1500 | 1500 | 750 |
| 1.000 | 25.4 | DMPC0990-1/2B | DMPC0990-1B | DMPC0990-1-1/2B | 1500 | 1500 | 750 |
| 1.060 | 26.9 | — | DMPC1060-1D | DMPC1060-1-1/2B | — | 1000 | 700 |
| 1.125 | 28.6 | — | DMPC1125-1B | DMPC1125-1-1/2B | — | 1000 | 700 |
| 1.230 | 31.8 | — | DMPC1230-1B | DMPC1230-1-1/2B | — | 1000 | 700 |
| 1.500 | 38.1 | — | DMPC1500-1B | DMPC1500-1-1/2B | — | 700 | 250 |
| 1.605 | 41.3 | — | DMPC1605-1B | DMPC1605-1-1/2C | — | 550 | 350 |

SCE Series Easy Pull Masking Caps



Specifications:

- Natural Silicone 600°F (316°C)
- Black EPDM 425°F (218°C)
- Hardness: Durometer (Shore A) 55 ± 5

Features:

- Wide flange design provides a positive seal and easy removal
- Silicone: premium masking material (due to high temperature and chemical resistance) can be used multiple times
- EPDM: a more economical material with reduced heat resistance; also reusable
- Applications: Powder Coating, E-Coating, Plating, Anodizing and Blasting

To Assure Proper Fit Due to Design Features:



I.D. of cap "A" dimension should be approx. 10% smaller than O.D. of part to be masked

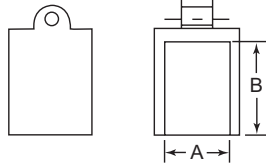
| Item No. | | A | | B | | Bulk Pack Qty |
|-------------|-------------|-------|-----|-------|------|---------------|
| Silicone | EPDM | in | mm | in | mm | |
| SCE0125A | SCE0125B | 0.125 | 3.2 | 2.000 | 50.8 | 200 |
| SCE0157A | SCE0157B | 0.157 | 4.0 | 1.180 | 30.0 | 500 |
| SCE0187A | SCE0187B | 0.187 | 4.7 | 1.377 | 34.0 | 1000 |
| SCE0236A | SCE0236B | 0.236 | 6.0 | 1.180 | 30.0 | 400 |
| SCE0255A | SCE0255B | 0.255 | 6.5 | 0.910 | 23.1 | 500 |
| SCE0255118A | SCE0255118C | 0.255 | 6.5 | 1.180 | 30.0 | 250 |
| SCE0294A | SCE0294B | 0.294 | 7.5 | 1.330 | 33.8 | 1000 |
| SCE0315A | SCE0315B | 0.315 | 8.0 | 0.974 | 24.7 | 250 |
| SCE0315118A | SCE0315118D | 0.315 | 8.0 | 1.180 | 30.0 | 250 |
| SCE0355A | SCE0355B | 0.355 | 9.0 | 1.500 | 38.1 | 250 |
| SCE0375A | SCE0375B | 0.375 | 9.5 | 1.421 | 36.1 | 250 |

| Item No. | | A | | B | | Bulk Pack Qty |
|-------------|-------------|-------|------|-------|------|---------------|
| Silicone | EPDM | in | mm | in | mm | |
| SCE0433A* | SCE0433C | 0.433 | 11.0 | 1.180 | 30.0 | 500 |
| SCE0438A | SCE0438C | 0.438 | 11.1 | 0.950 | 24.1 | 500 |
| SCE0451A | SCE0451B | 0.451 | 11.5 | 1.215 | 30.9 | 200 |
| SCE0485A | SCE0485B | 0.485 | 12.3 | 1.013 | 25.7 | 500 |
| SCE0492118A | SCE0492118B | 0.492 | 12.5 | 1.180 | 30.0 | 200 |
| SCE0531A | SCE0531B | 0.531 | 13.5 | 1.180 | 30.0 | 250 |
| SCE0608A | SCE0608B | 0.608 | 15.4 | 1.180 | 30.0 | 200 |
| SCE0608099A | SCE0608099B | 0.608 | 15.4 | 0.990 | 25.1 | 200 |
| SCE0622A | SCE0622B | 0.622 | 15.8 | 1.575 | 40.0 | 200 |
| SCE0725A | SCE0725B | 0.725 | 18.4 | 1.500 | 38.1 | 100 |

* Has 2nd internal rib near closed end of cap

HIGH TEMPERATURE CAPS

FEC Series Flexible End Caps



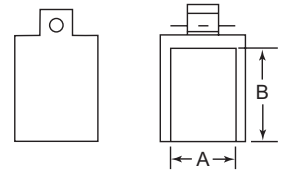
Type 1

Specifications:

- Material: Thermoplastic Elastomer
- Temperature Range: 203°F (95°C)
- Color: Black

Features:

- Flek ble material can stretch onto larger diameters for a snug fit
- Good resistance to acids
- Can be used with Mask ng Hook on page 78

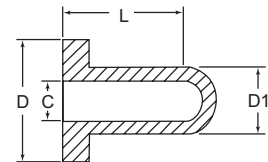


Type 2

| Item No. | Type | A | | B | | Bulk Pack Qty |
|----------|------|-------|------|-------|------|---------------|
| | | in | mm | in | mm | |
| 1340242 | 2 | 0.157 | 4.0 | 0.945 | 24.0 | 10000 |
| 12200B | 1 | 0.197 | 5.0 | 0.925 | 23.5 | 10000 |
| 1341946 | 2 | 0.236 | 6.0 | 0.984 | 25.0 | 10000 |
| 1287248 | 2 | 0.276 | 7.0 | 0.945 | 24.0 | 10000 |
| 1287251 | 2 | 0.315 | 8.0 | 0.965 | 24.5 | 8000 |
| 12204B | 1 | 0.354 | 9.0 | 0.984 | 25.0 | 7000 |
| 1341978 | 2 | 0.394 | 10.0 | 1.161 | 29.5 | 5000 |
| 1341987 | 2 | 0.433 | 11.0 | 1.142 | 29.0 | 4500 |
| 12207B | 1 | 0.472 | 12.0 | 1.142 | 29.0 | 4000 |
| 1341981 | 2 | 0.512 | 13.0 | 1.142 | 29.0 | 3500 |
| 12209B | 1 | 0.551 | 14.0 | 1.161 | 29.5 | 3000 |
| 12210B | 1 | 0.591 | 15.0 | 1.161 | 29.5 | 2500 |
| 12211B | 1 | 0.630 | 16.0 | 1.102 | 28.0 | 2500 |
| 12212B | 1 | 0.669 | 17.0 | 1.161 | 29.5 | 2000 |

| Item No. | Type | A | | B | | Bulk Pack Qty |
|----------|------|-------|------|-------|------|---------------|
| | | in | mm | in | mm | |
| 12213B | 2 | 0.709 | 18.0 | 1.122 | 28.5 | 2000 |
| 1287245 | 2 | 0.748 | 19.0 | 1.161 | 29.5 | 2000 |
| 1341984 | 2 | 0.787 | 20.0 | 1.122 | 28.5 | 1600 |
| 12216B | 1 | 0.827 | 21.0 | 1.358 | 34.5 | 1300 |
| 12217B | 2 | 0.866 | 22.0 | 1.339 | 34.0 | 1200 |
| 12218B | 2 | 0.906 | 23.0 | 1.358 | 34.5 | 1000 |
| 1341988 | 2 | 0.945 | 24.0 | 1.339 | 34.0 | 1000 |
| 12220B | 2 | 0.984 | 25.0 | 1.358 | 34.5 | 1000 |
| 12221B | 2 | 1.024 | 26.0 | 1.358 | 34.5 | 900 |
| 1222B | 2 | 1.063 | 27.0 | 1.319 | 33.5 | 900 |
| 1287254 | 2 | 1.102 | 28.0 | 1.319 | 33.5 | 800 |
| 12224B | 2 | 1.142 | 29.0 | 1.378 | 35.0 | 800 |
| 1287243 | 2 | 1.181 | 30.0 | 1.358 | 34.5 | 600 |

WC Series Washer Caps



Specifications:

- Natural Silicone 600°F (316°C)
- Black EPDM 425°F (218°C)

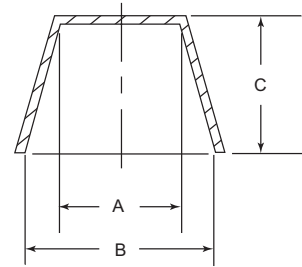
Features:

- Designed as a cap with an added washer to mask off grounding
- Although designed as a cap, can be used to plug holes if needed

| Item No. | Caps Std Threads | | C | | D | | D1 | | L | | Bulk Pack Qty | |
|------------|------------------|------|------|-------|------|-------|------|-------|------|-------|---------------|-----|
| | Silicone | EPDM | UN | M | in | mm | in | mm | in | mm | | |
| WC0100050A | WC0100050B | #4 | M2.5 | 0.100 | 2.5 | 0.500 | 12.7 | 0.225 | 5.7 | 1.000 | 25.4 | 500 |
| WC0125050A | WC0125050B | #6 | — | 0.125 | 3.2 | 0.500 | 12.7 | 0.252 | 6.4 | 1.000 | 25.4 | 500 |
| WC0156050A | WC0156050B | #8 | M4 | 0.156 | 4.0 | 0.500 | 12.7 | 0.315 | 8.0 | 1.000 | 25.4 | 500 |
| WC0172050A | WC0172050B | #10 | — | 0.172 | 4.4 | 0.500 | 12.7 | 0.382 | 9.7 | 1.000 | 25.4 | 500 |
| WC0220059A | WC0220059B | — | M6 | 0.220 | 5.6 | 0.590 | 15.0 | 0.358 | 9.1 | 1.000 | 25.4 | 500 |
| WC0240050A | WC0240050B | 1/4 | — | 0.240 | 6.1 | 0.500 | 12.7 | 0.358 | 9.1 | 1.000 | 25.4 | 250 |
| WC0295070A | WC0295070B | 5/16 | M8 | 0.295 | 7.5 | 1.700 | 17.8 | 0.413 | 10.5 | 1.000 | 25.4 | 250 |
| WC0375082A | WC0375082B | 3/8 | M10 | 0.375 | 9.5 | 0.825 | 21.0 | 0.512 | 13.0 | 1.500 | 38.1 | 250 |
| WC0453098A | WC0453098B | — | M12 | 0.453 | 11.5 | 0.984 | 25.0 | 0.650 | 16.5 | 1.500 | 38.1 | 250 |
| WC0500100A | WC0500100B | 1/2 | — | 0.500 | 12.7 | 1.000 | 25.4 | 0.606 | 15.4 | 1.000 | 25.4 | 250 |
| WC0615118A | WC0615118B | 5/8 | M16 | 0.615 | 15.6 | 1.180 | 30.0 | 0.815 | 20.7 | 1.500 | 38.1 | 100 |

HIGH TEMPERATURE CAPS / HIGH TEMPERATURE TUBING

EFTC Series Tapered Paper Caps



Specifications:

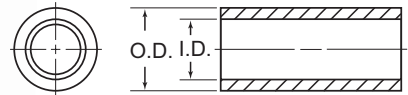
- Temp Range: 400°F/205°C
- Color: Tan

Features:

- Environmentally friendly masking solution: recyclable
- Made of a blend of post consumer and virgin materials
- Paper does not promote condensation
- Economical solution compared to rubber and silicone products
- Applications: painting or powder coating
- Paper is hygroscopic, meaning there will be minor dimensional variations with changes in humidity
- Dimensional tolerances: A typically +/- 0.010" (0.25mm), B typically +/- 0.025" (0.63mm), C & D typically +/- 0.050" (1.27mm)

| Item No. | NPT Size | A | | B | | C | | Bulk Pack Qty. |
|-------------|----------|------|------|------|------|------|------|----------------|
| | | In | mm | In | mm | In | mm | |
| EFTC035040A | 1/8" | 0.35 | 9.0 | 0.4 | 10.1 | 0.40 | 10.1 | 25000 |
| EFTC047049A | 1/4" | 0.47 | 11.9 | 0.49 | 12.4 | 0.53 | 13.5 | 12000 |
| EFTC048075A | — | 0.48 | 12.3 | 0.75 | 19.0 | 0.88 | 22.4 | 5800 |
| EFTC065065A | 3/8" | 0.65 | 16.5 | 0.65 | 16.5 | 0.52 | 13.1 | 16000 |
| EFTC078083A | 1/2" | 0.78 | 19.7 | 0.83 | 21.2 | 0.77 | 19.5 | 7000 |
| EFTC081095A | — | 0.81 | 20.6 | 0.95 | 24.2 | 0.84 | 21.2 | 5500 |
| EFTC087105A | — | 0.87 | 22.1 | 1.05 | 26.7 | 0.66 | 16.7 | 6200 |
| EFTC095108A | 3/4" | 0.95 | 24.1 | 1.08 | 27.3 | 0.89 | 22.5 | 4000 |
| EFTC113130A | — | 1.13 | 28.6 | 1.3 | 33.0 | 0.72 | 18.2 | 3500 |
| EFTC126127A | 1" | 1.27 | 32.2 | 1.26 | 32.0 | 1.00 | 25.3 | 3300 |
| EFTC131152A | — | 1.31 | 33.3 | 1.52 | 38.6 | 0.70 | 17.8 | 3200 |
| EFTC145162A | — | 1.45 | 36.7 | 1.62 | 41.2 | 0.81 | 20.6 | 3000 |
| EFTC162169A | 1-1/4" | 1.62 | 41.0 | 1.69 | 42.8 | 0.85 | 21.5 | 2700 |
| EFTC168201A | — | 1.68 | 42.5 | 2.01 | 51.1 | 0.72 | 18.3 | 2500 |
| EFTC183189A | 1-1/2" | 1.83 | 46.4 | 1.89 | 48.0 | 0.94 | 23.9 | 1800 |
| EFTC233234A | 2" | 2.33 | 59.1 | 2.34 | 59.5 | 0.87 | 22.0 | 1400 |
| EFTC259285A | — | 2.59 | 65.7 | 2.85 | 72.3 | 0.98 | 24.9 | 1000 |
| EFTC283285A | 2-1/2" | 2.83 | 71.8 | 2.85 | 72.3 | 0.97 | 24.6 | 800 |
| EFTC332363A | 3" | 3.32 | 84.2 | 3.63 | 92.2 | 1.12 | 28.3 | 500 |

ST Series Silicone Tubing



Specifications:

- 600°F (315°C)
- Hardness: Durometer (Shore A) 55 ± 5
- Material: Silicone
- Color: Natural

Features:

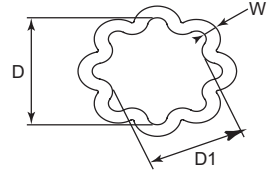
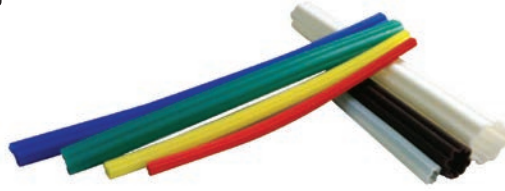
- Excellent solution to fit over longer parts where standard caps are too short (can use with cap if required)
- Masking off thru hole, by utilizing the O.D. of silicone tube and pulling it through
- Can be cut to required length (cutting long creates easy pull tab)
- Conforms to irregularities
- Reusable and will not melt or harden
- Applications: Powder Coating, E-Coating, Plating and Anodizing

| Item No. | ID | | OD | | Roll Length | | Pack Qty |
|----------|-------|-----|-------|------|-------------|-------|----------|
| | in | mm | in | mm | Ft | m | |
| ST0040A | 0.040 | 1.0 | 0.165 | 4.2 | 100 | 30.48 | 1 |
| ST0062A | 0.062 | 1.6 | 0.187 | 4.8 | 100 | 30.48 | 1 |
| ST0080A | 0.080 | 2.0 | 0.205 | 5.2 | 100 | 30.48 | 1 |
| ST0093A | 0.093 | 2.4 | 0.218 | 5.6 | 100 | 30.48 | 1 |
| ST0109A | 0.109 | 2.8 | 0.234 | 6.0 | 100 | 30.48 | 1 |
| ST0125A | 0.125 | 3.2 | 0.250 | 6.4 | 100 | 30.48 | 1 |
| ST0140A | 0.140 | 3.6 | 0.265 | 6.8 | 100 | 30.48 | 1 |
| ST0156A | 0.156 | 4.0 | 0.281 | 7.2 | 100 | 30.48 | 1 |
| ST0172A | 0.172 | 4.4 | 0.297 | 7.6 | 100 | 30.48 | 1 |
| ST0187A | 0.187 | 4.7 | 0.312 | 7.9 | 100 | 30.48 | 1 |
| ST0203A | 0.203 | 5.2 | 0.328 | 8.4 | 100 | 30.48 | 1 |
| ST0218A | 0.218 | 5.5 | 0.343 | 8.7 | 100 | 30.48 | 1 |
| ST0234A | 0.234 | 5.9 | 0.359 | 9.1 | 100 | 30.48 | 1 |
| ST0250A | 0.250 | 6.3 | 0.375 | 9.5 | 100 | 30.48 | 1 |
| ST0281A | 0.281 | 7.1 | 0.406 | 10.3 | 50 | 15.24 | 1 |
| ST0312A | 0.312 | 7.9 | 0.437 | 11.1 | 50 | 15.24 | 1 |
| ST0343A | 0.343 | 8.7 | 0.468 | 11.9 | 50 | 15.24 | 1 |

| Item No. | ID | | OD | | Roll Length | | Pack Qty |
|----------|-------|------|-------|------|-------------|-------|----------|
| | in | mm | in | mm | Ft | m | |
| ST0375A | 0.375 | 9.5 | 0.500 | 12.7 | 50 | 15.24 | 1 |
| ST0406A | 0.406 | 10.3 | 0.531 | 13.5 | 50 | 15.24 | 1 |
| ST0437A | 0.437 | 11.1 | 0.562 | 14.3 | 50 | 15.24 | 1 |
| ST0500A | 0.500 | 12.7 | 0.625 | 15.9 | 50 | 15.24 | 1 |
| ST0625A | 0.625 | 15.9 | 0.750 | 19.1 | 50 | 15.24 | 1 |
| ST0750A | 0.750 | 19.1 | 0.875 | 22.3 | 50 | 15.24 | 1 |
| ST0875A | 0.875 | 22.2 | 1.000 | 25.4 | 50 | 15.24 | 1 |
| ST0937A | 0.937 | 23.8 | 1.062 | 27.0 | 50 | 15.24 | 1 |
| ST1000A | 1.000 | 25.4 | 1.125 | 28.6 | 50 | 15.24 | 1 |
| ST1125A | 1.125 | 28.6 | 1.250 | 31.8 | 25 | 7.62 | 1 |
| ST1250A | 1.250 | 31.8 | 1.375 | 35.0 | 25 | 7.62 | 1 |
| ST1375A | 1.375 | 34.9 | 1.500 | 38.1 | 25 | 7.62 | 1 |
| ST1500A | 1.500 | 38.1 | 1.625 | 41.3 | 25 | 7.62 | 1 |
| ST1625A | 1.625 | 41.3 | 1.750 | 44.5 | 25 | 7.62 | 1 |
| ST1750A | 1.750 | 44.4 | 1.875 | 47.6 | 25 | 7.62 | 1 |
| ST1875A | 1.875 | 47.6 | 2.000 | 50.8 | 25 | 7.62 | 1 |
| ST2000A | 2.000 | 50.8 | 2.125 | 54.0 | 25 | 7.62 | 1 |

HIGH TEMPERATURE TUBING & CORD

STFL Series Flexible Silicone Star Tubing



Specifications:

- Silicone 600°F (315°C)
- Color: See Table

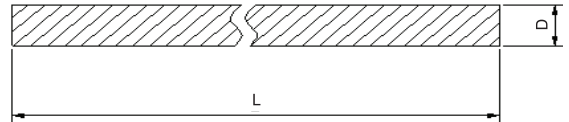
Features:

- Flexible enough for each to fit several ranges
- Fits over threaded studs, unthreaded tubes or irregular shapes

See pages 21 and 22 for Application Wizard

| Item No. | Color | D | | D1 | | W | | Fits Std. Threads | Roll Length | | Pack Qty |
|-------------|---------|-------|------|-------|------|------|-----|-----------------------------------------|-------------|-------|----------|
| | | in | mm | in | mm | in | mm | | Ft | m | |
| STFL011020A | Red | 0.209 | 5.3 | 0.110 | 2.8 | 0.06 | 1.5 | 4 - 40, 6 - 32, 8 - 32, 10 - 24, M4, M5 | 100 | 30.48 | 1 |
| STFL018028A | Yellow | 0.287 | 7.3 | 0.189 | 4.8 | 0.06 | 1.5 | 10 - 24, 12 - 24, 1/4 - 20, M5, M6 | 100 | 30.48 | 1 |
| STFL025037A | Clear | 0.374 | 9.5 | 0.256 | 6.5 | 0.06 | 1.5 | 5/16 - 18, M8 | 100 | 30.48 | 1 |
| STFL033045A | Blue | 0.452 | 11.5 | 0.335 | 8.5 | 0.06 | 1.5 | 3/8 - 16, M10 | 100 | 30.48 | 1 |
| STFL042055A | Green | 0.551 | 14.0 | 0.421 | 10.7 | 0.06 | 1.5 | 7/16 - 14, 1/2 - 13, M12, M14 | 100 | 30.48 | 1 |
| STFL050062A | Purple | 0.625 | 15.9 | 0.500 | 12.7 | 0.06 | 1.5 | 9/16 - 12, 5/8 - 11 | 100 | 30.48 | 1 |
| STFL062075A | Rust | 0.750 | 19.1 | 0.625 | 15.9 | 0.06 | 1.5 | 5/8 - 11, 11/16, M16, M18 | 50 | 15.24 | 1 |
| STFL072087A | Blue | 0.875 | 22.2 | 0.725 | 18.4 | 0.06 | 1.5 | 3/4 - 10, 7/8 - 9, M20 | 50 | 15.24 | 1 |
| STFL085100A | White | 1.000 | 25.4 | 0.850 | 21.6 | 0.06 | 1.5 | 1 - 8, M20, M24, M25 | 50 | 15.24 | 1 |
| 1426282 | Natural | 1.250 | 31.7 | 1.000 | 25.4 | 0.06 | 1.5 | 1 - 1/4-7, M33 | 25 | 7.62 | 1 |
| 1426284 | Purple | 1.500 | 38.1 | 1.250 | 31.7 | 0.06 | 1.5 | 1 - 1/2-6, M39 | 25 | 7.62 | 1 |
| 1426286 | Rusty | 1.750 | 44.4 | 1.500 | 38.1 | 0.06 | 1.5 | 1 - 3/4 - 5 | 25 | 7.62 | 1 |
| 1426288 | Orange | 2.000 | 50.8 | 1.750 | 44.4 | 0.06 | 1.5 | 2 - 4 - 1/2 | 25 | 7.62 | 1 |

Flexible Silicone Foam Cord



Specifications:

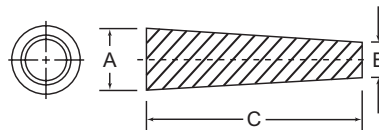
- Silicone Foam 600°F (315°C)
- Color: Natural

Features:

- Can be used like a gasket to mask off threads, grooves, slots, or keyways
- Can be cut to length and is reusable
- Applications: Powder Coating, E-Coating, Plating and Anodizing

| Item No. | D | | Roll Length | | Pack Qty |
|----------|-------|------|-------------|-----|----------|
| | in | mm | Ft | m | |
| 1426383 | 0.125 | 3.2 | 50 | 15 | 1 |
| 1426385 | 0.187 | 4.7 | 50 | 15 | 1 |
| 1426387 | 0.250 | 6.4 | 50 | 15 | 1 |
| 1426389 | 0.312 | 7.9 | 50 | 15 | 1 |
| 1426391 | 0.500 | 12.7 | 25 | 7.5 | 1 |
| 1426393 | 0.625 | 15.9 | 25 | 7.5 | 1 |
| 1426395 | 0.750 | 19.1 | 25 | 7.5 | 1 |
| 1426397 | 0.875 | 22.2 | 25 | 7.5 | 1 |
| 1426399 | 1.000 | 25.4 | 25 | 7.5 | 1 |
| 1426401 | 1.250 | 31.8 | 25 | 7.5 | 1 |
| 1426403 | 1.500 | 38.1 | 25 | 7.5 | 1 |
| 1426405 | 1.750 | 44.5 | 25 | 7.5 | 1 |
| 1426407 | 2.000 | 50.8 | 25 | 7.5 | 1 |

**STP Series
 Tapered Masking Plugs**



Specifications:

- Silicone 600°F (316°C)
- EPDM 425°F (218°C)
- Hardness: Durometer (Shore A) 55 ± 5
- Color: See Table

Features:

- Plugs threaded or unthreaded holes
- Silicone: premium masking material (due to high temperature rating) can be used multiple times
- Silicone available in natural and mixed colors for color coding applications
- EPDM: reusable, economical material with slightly reduced heat resistance, but superior chemical resistance
- Applications: Powder Coating, E-Coating, Plating and Anodizing
- For Hollow Tapered Masking Plugs see HSTP Series on page 73

To Assure Proper Fit and Easy Handling:

Plugs

We suggest that you select "A" dimension to be approximately 15% larger than the hole diameter

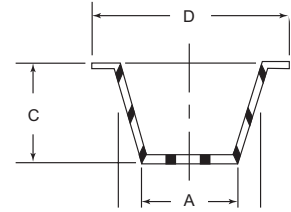


See pages 21 and 22 for Application Warnings

| Item No. | Item No. Color | | Item No. | Plugs Std Threads | | A | | B | | C | | Bulk Pack Qty | Color Bulk Pack Qty |
|--------------------|----------------|--------|---------------|-------------------|-----|-------|-------|-------|------|-------|------|---------------|---------------------|
| Silicone (Natural) | Silicone | Color | EPDM (Black) | UNC | M | in | mm | in | mm | in | mm | | |
| STP001006A | — | — | STP001006B | — | — | 0.062 | 1.6 | 0.016 | 0.4 | 0.625 | 15.9 | 1000 | — |
| STP002007A | — | — | STP002007B | — | — | 0.078 | 2.0 | 0.020 | 0.5 | 0.750 | 19.1 | 1000 | — |
| STP003012A | — | — | STP003012B | 2-56 | M2 | 0.125 | 3.2 | 0.031 | 0.8 | 0.625 | 15.9 | 1000 | — |
| STP006012A | STP006012 | Green | STP006012C | 4-40 | — | 0.125 | 3.2 | 0.063 | 1.6 | 0.625 | 15.9 | 1000 | 1000 |
| STP006018A | STP006018 | Pink | STP006018C | 6-32 | — | 0.187 | 4.7 | 0.063 | 1.6 | 0.625 | 15.9 | 1000 | 1000 |
| STP006018-07A | — | — | STP006018-07C | 8-32 | — | 0.187 | 4.7 | 0.062 | 1.6 | 0.750 | 19.1 | 1000 | — |
| STP004019-11A | — | — | STP004019-11B | 8-32 | M4 | 0.197 | 5.0 | 0.049 | 1.2 | 1.100 | 27.9 | 1000 | — |
| STP006020A | — | — | STP006020D | 10-24 | M4 | 0.200 | 5.1 | 0.062 | 1.6 | 0.750 | 19.1 | 1000 | — |
| STP012025A | STP012025 | Grey | STP012025D | 12-24 | M6 | 0.250 | 6.3 | 0.125 | 3.2 | 0.750 | 19.1 | 1000 | 1000 |
| STP012025-10A | — | — | STP012025-10C | 1/4-20 | M6 | 0.250 | 6.3 | 0.125 | 3.2 | 1.000 | 25.4 | 1000 | — |
| STP001027A | — | — | STP001027B | — | — | 0.279 | 7.1 | 0.016 | 0.4 | 0.984 | 25.0 | 1000 | — |
| STP018034A | STP018034 | Blue | STP018034D | 5/16-18 | M8 | 0.343 | 8.7 | 0.187 | 4.7 | 0.625 | 15.9 | 1000 | 1000 |
| STP018034-10A | — | — | STP018034-10C | 5/16-18 | M8 | 0.343 | 8.7 | 0.187 | 4.7 | 1.000 | 25.4 | 1000 | — |
| STP012037-12A | — | — | STP012037-12B | 5/16-18 | — | 0.375 | 9.5 | 0.125 | 3.2 | 1.250 | 31.8 | 1000 | — |
| STP025037A | STP025037 | Yellow | STP025037D | 3/8-16 | M10 | 0.375 | 9.5 | 0.250 | 6.3 | 0.750 | 19.1 | 1000 | 500 |
| STP025043A | — | — | STP025043C | 7/16-14 | M10 | 0.437 | 11.1 | 0.250 | 6.3 | 1.000 | 25.4 | 1000 | — |
| STP035047A | — | — | STP035047B | 1/2-13 | — | 0.472 | 12.0 | 0.354 | 9.0 | 0.708 | 18.0 | 500 | — |
| STP012050-20A | — | — | STP012050-20B | — | — | 0.500 | 12.7 | 0.125 | 3.2 | 2.000 | 50.8 | 1000 | — |
| STP031050A | — | — | STP031050C | — | M12 | 0.500 | 12.7 | 0.312 | 7.9 | 1.000 | 25.4 | 200 | — |
| STP039059A | STP039059 | Purple | STP039059B | 9/16-12 | M14 | 0.590 | 15.0 | 0.393 | 10.0 | 1.000 | 25.4 | 500 | 250 |
| STP043062A | STP043062 | Green | STP043062D | 5/8-11 | M16 | 0.625 | 15.9 | 0.437 | 11.1 | 0.813 | 20.7 | 200 | 250 |
| STP051067A | STP051067 | Pink | STP051067E | — | — | 0.669 | 17.0 | 0.512 | 13.0 | 1.000 | 25.4 | 200 | 250 |
| STP055075A | STP055075 | Grey | STP055075D | 3/4-10 | — | 0.748 | 19.0 | 0.562 | 14.3 | 1.000 | 25.4 | 200 | 100 |
| STP062078A | STP062078 | Red | STP062078D | — | M20 | 0.787 | 20.0 | 0.625 | 15.9 | 1.000 | 25.4 | 100 | 100 |
| STP053079A | — | — | STP053079B | — | — | 0.797 | 20.2 | 0.538 | 13.7 | 0.984 | 25.0 | 200 | — |
| STP071094A | STP071094 | Yellow | STP071094C | — | — | 0.938 | 23.8 | 0.719 | 18.2 | 1.000 | 25.4 | 100 | 100 |
| STP062094A | — | — | STP062094B | 7/8-9 | — | 0.945 | 24.0 | 0.625 | 15.9 | 1.000 | 25.4 | 100 | — |
| STP075094A | — | — | STP075094C | — | — | 0.945 | 24.0 | 0.750 | 19.2 | 0.750 | 19.1 | 100 | — |
| STP078102A | — | — | STP078102B | 1-8 | — | 1.024 | 26.0 | 0.787 | 20.0 | 1.000 | 25.4 | 100 | — |
| STP090106A | STP090106 | Green | STP090106C | — | — | 1.063 | 27.0 | 0.906 | 23.0 | 1.000 | 25.4 | 100 | 100 |
| STP094110A | — | — | STP094110C | — | — | 1.102 | 28.0 | 0.945 | 24.0 | 1.000 | 25.4 | 100 | — |
| STP109118A | — | — | STP109118B | 1-1/8-7 | — | 1.181 | 30.0 | 1.094 | 27.8 | 1.000 | 25.4 | 50 | — |
| STP102126A | STP102126 | Purple | STP102126B | 1 1/4-7 | — | 1.250 | 31.8 | 1.031 | 26.1 | 1.000 | 25.4 | 100 | 100 |
| STP106134A | — | — | STP106134B | 1 3/8-6 | — | 1.338 | 34.0 | 1.063 | 27.0 | 1.000 | 25.4 | 100 | — |
| STP118145A | STP118145 | Blue | STP118145B | 1 1/2-6 | — | 1.456 | 36.9 | 1.188 | 30.2 | 1.000 | 25.4 | 50 | 100 |
| STP122153A | — | — | STP122153B | — | — | 1.535 | 39.0 | 1.220 | 31.0 | 1.000 | 25.4 | 50 | — |
| STP130161A | — | — | STP130161B | — | — | 1.614 | 41.0 | 1.300 | 33.0 | 1.000 | 25.4 | 50 | — |
| STP141169A | — | — | STP141169C | — | — | 1.693 | 43.0 | 1.417 | 36.0 | 1.000 | 25.4 | 50 | — |
| STP145177A | STP145177 | Red | STP145177C | 1 3/4-5 | — | 1.772 | 45.0 | 1.457 | 37.0 | 1.000 | 25.4 | 50 | 50 |
| STP149181A | — | — | STP149181C | — | — | 1.810 | 46.0 | 1.496 | 38.0 | 1.000 | 25.4 | 50 | — |
| STP165196A | — | — | STP165196B | 2-4 1/2 | — | 1.968 | 50.0 | 1.653 | 42.0 | 1.000 | 25.4 | 25 | — |
| STP177208A | — | — | STP177208B | — | — | 2.086 | 53.0 | 1.770 | 45.0 | 1.000 | 25.4 | 25 | — |
| STP189220A | STP189220 | Blue | STP189220C | — | — | 2.203 | 56.0 | 1.875 | 47.6 | 1.000 | 25.4 | 25 | 25 |
| STP196248A | — | — | STP196248B | — | — | 2.480 | 63.0 | 1.968 | 50.0 | 1.000 | 25.4 | 25 | — |
| STP212252A | STP212252 | Yellow | STP212252B | — | — | 2.500 | 63.5 | 2.125 | 54.0 | 1.000 | 25.4 | 25 | 25 |
| STP228267A | — | — | STP228267B | — | — | 2.677 | 68.0 | 2.283 | 58.0 | 1.000 | 25.4 | 25 | — |
| STP244295A | — | — | STP244295B | — | — | 2.953 | 75.0 | 2.440 | 62.0 | 1.377 | 35.0 | 25 | — |
| STP295354A | — | — | STP295354B | — | — | 3.543 | 90.0 | 2.953 | 75.0 | 1.535 | 39.0 | 25 | — |
| STP326405A | — | — | STP326405B | — | — | 4.055 | 103.0 | 3.267 | 83.0 | 1.535 | 39.0 | 20 | — |
| STP354500A | — | — | STP354500B | — | — | 5.000 | 127.0 | 3.543 | 90.0 | 1.968 | 50.0 | 10 | — |

HIGH TEMPERATURE PLUGS

EFTP Series Tapered Paper Plugs



Specifications:

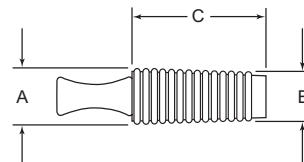
- Temp Range: 400°F/205°C
- Color: Tan

Features:

- Environmentally friendly masking solution: recyclable
- Made of a blend of post consumer and virgin materials
- Paper does not promote condensation
- Economical solution compared to rubber and silicone products
- Applications: painting or powder coating
- Paper is hygroscopic, meaning there will be minor dimensional variations with changes in humidity
- Dimensional tolerances: A typically +/- 0.010" (0.25mm), B typically +/- 0.025" (0.63mm), C & D typically +/- 0.050" (1.27mm)

| Item No. | NPT Size | UNC Size | A | | B | | C | | D | | Bulk Pack Qty |
|-------------|----------|---------------|------|------|------|------|------|------|------|-------|---------------|
| | | | In | mm | In | mm | In | mm | In | mm | |
| EFTP035042A | 1/8" | 7/16 - 14 | 0.35 | 9.0 | 0.42 | 10.5 | 0.34 | 8.7 | 0.56 | 14.3 | 30000 |
| EFTP037047A | — | 1/2 - 13 | 0.37 | 9.4 | 0.47 | 11.9 | 0.36 | 9.1 | 0.63 | 16.0 | 22000 |
| EFTP046050A | 1/4" | 9/16 - 12 | 0.46 | 11.7 | 0.50 | 12.8 | 0.36 | 9.2 | 0.68 | 17.4 | 18000 |
| EFTP047057A | — | 5/8 - 11 | 0.47 | 11.9 | 0.57 | 14.6 | 0.42 | 1.6 | 0.76 | 19.3 | 13500 |
| EFTP052064A | — | 3/4 - 10 | 0.52 | 13.2 | 0.64 | 16.1 | 0.42 | 1.7 | 0.87 | 22.1 | 9000 |
| EFTP058070A | 3/8" | — | 0.58 | 14.7 | 0.70 | 17.7 | 0.48 | 12.2 | 0.87 | 22.0 | 16000 |
| EFTP065078A | — | 7/8 - 10 | 0.65 | 16.5 | 0.78 | 19.7 | 0.45 | 11.5 | 1.01 | 25.5 | 13000 |
| EFTP068082A | 1/2" | — | 0.68 | 17.2 | 0.82 | 20.8 | 0.53 | 13.5 | 1.04 | 26.3 | 10500 |
| EFTP078088A | — | — | 0.78 | 19.8 | 0.88 | 22.3 | 0.58 | 14.8 | 1.18 | 30.0 | 7200 |
| EFTP086095A | — | 1-8 | 0.86 | 21.8 | 0.95 | 24.1 | 0.69 | 17.5 | 1.29 | 32.9 | 5000 |
| EFTP092111A | 3/4" | 1-1/8 - 7 | 0.92 | 23.3 | 1.11 | 28.3 | 0.54 | 13.8 | 1.38 | 35.0 | 6200 |
| EFTP100124A | — | 1-3/8 - 6 | 1.00 | 25.4 | 1.24 | 31.4 | 0.76 | 19.3 | 1.53 | 38.8 | 3500 |
| EFTP118144A | 1" | 1-1/2 - 6 | 1.18 | 29.8 | 1.44 | 36.5 | 0.64 | 16.1 | 1.73 | 44.0 | 5000 |
| EFTP136160A | — | 1-3/4 - 5 | 1.36 | 34.6 | 1.60 | 40.7 | 0.58 | 14.6 | 1.88 | 47.8 | 4700 |
| EFTP150178A | 1-1/4" | — | 1.50 | 38.0 | 1.78 | 45.1 | 0.69 | 17.5 | 2.12 | 53.8 | 3000 |
| EFTP173206A | 1-1/2" | 2 - 4-1/2 | 1.73 | 43.8 | 2.06 | 52.4 | 0.68 | 17.2 | 2.43 | 61.7 | 2700 |
| EFTP188221A | — | 2-1/4 - 4-1/2 | 1.88 | 47.6 | 2.21 | 56.1 | 0.70 | 17.8 | 2.7 | 68.6 | 2200 |
| EFTP198230A | — | 2-1/2 - 4 | 1.98 | 50.2 | 2.30 | 58.4 | 1.03 | 26.1 | 2.92 | 74.2 | 1200 |
| EFTP222250A | 2" | — | 2.22 | 56.3 | 2.50 | 63.5 | 0.64 | 16.3 | 2.93 | 74.5 | 1800 |
| EFTP264315A | 2-1/2" | — | 2.64 | 67.0 | 3.15 | 79.9 | 0.75 | 19.1 | 3.57 | 90.7 | 1300 |
| EFTP328360A | 3" | — | 3.28 | 83.2 | 3.60 | 91.4 | 0.74 | 18.7 | 4.09 | 103.9 | 1000 |

SFP Series Flangeless Tapered Plugs



Specifications:

- Silicone 600°F (316°C)
Hardness: Durometer (Shore A) 55 ± 5
- EPDM 425°F (218°C)
Hardness: Durometer (Shore A) 50 ± 5
- Color: See Table

Features:

- Protects threaded or unthreaded holes without masking the surrounding areas
- Ergonomically friendly pull tab allows for easy installation and removal
- Silicone: premium masking material (due to high temperature rating) can be used multiple times
- EPDM: reusable, economical material with slightly reduced heat resistance, but superior chemical resistance
- Applications: Powder Coating, E-Coating, Plating and Anodizing
- For TPR version, see page 43



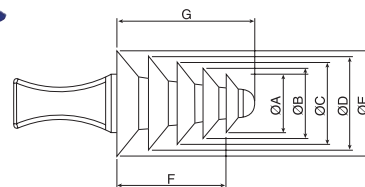
| Item No. | Plug Threads | | A | | B | | C | | Bulk Pack Qty | |
|--------------|--------------------|--------------|-----|-------|------|-------|------|-----|---------------|------|
| | Silicone (Natural) | EPDM (Black) | UN | M | in | mm | in | mm | | |
| SFP157236A | SFP157236B | #10 and #12 | M4 | 0.236 | 6.0 | 0.157 | 4.0 | 1.0 | 25.4 | 1000 |
| SFP236315A | SFP236315D | 1/4 and 5/16 | M6 | 0.315 | 8.0 | 0.236 | 6.0 | 1.0 | 25.4 | 1000 |
| SFP315394A | SFP315394C | 3/8 | M8 | 0.394 | 10.0 | 0.315 | 8.0 | 1.0 | 25.4 | 1000 |
| SFP188415A | SFP188415B | — | — | 0.415 | 10.5 | 0.188 | 4.8 | 1.0 | 25.4 | 1000 |
| SFP394472A | SFP394472C | 7/16 | M10 | 0.472 | 12.0 | 0.394 | 10.0 | 1.0 | 25.4 | 500 |
| SFP472551A | SFP472551B | 1/2 | M12 | 0.551 | 14.0 | 0.472 | 12.0 | 1.0 | 25.4 | 500 |
| SFP551630A | SFP551630C | 5/8 | M14 | 0.630 | 16.0 | 0.551 | 14.0 | 1.0 | 25.4 | 200 |
| SFP415641A | SFP415641B | — | — | 0.641 | 16.3 | 0.415 | 10.5 | 1.0 | 25.4 | 500 |
| SFP630709A | SFP630709C | 11/16 | M16 | 0.709 | 18.0 | 0.630 | 16.0 | 1.0 | 25.4 | 200 |
| SFP709787A | SFP709787C | 3/4 | M18 | 0.787 | 20.0 | 0.709 | 18.0 | 1.0 | 25.4 | 200 |
| SFP641868A | SFP641868B | — | — | 0.868 | 22.1 | 0.641 | 16.3 | 1.0 | 25.4 | 200 |
| SFP787886A | SFP787886B | 7/8 | M20 | 0.886 | 22.5 | 0.787 | 20.0 | 1.0 | 25.4 | 200 |
| SFP886945A | SFP886945C | — | — | 0.945 | 24.0 | 0.886 | 22.5 | 1.0 | 25.4 | 200 |
| SFP9541024A | SFP9541024B | 1 | M24 | 1.024 | 26.0 | 0.945 | 24.0 | 1.0 | 25.4 | 100 |
| SFP8681094A | SFP8681094B | — | — | 1.094 | 27.8 | 0.868 | 22.1 | 1.0 | 25.4 | 100 |
| SFP10241102A | SFP10241102C | — | M25 | 1.102 | 28.0 | 1.024 | 26.0 | 1.0 | 25.4 | 100 |
| SFP10001125A | SFP10001125B | — | — | 1.125 | 28.5 | 1.000 | 25.4 | 1.0 | 25.4 | 100 |
| SFP10941320A | SFP10941320B | — | — | 1.320 | 33.5 | 1.094 | 27.8 | 1.0 | 25.4 | 100 |
| SFP11251250A | SFP11251250B | 1-1/8 | — | 1.250 | 31.8 | 1.125 | 28.6 | 1.0 | 25.4 | 100 |
| SFP13201547A | SFP13201547B | 1-1/2 | — | 1.547 | 39.3 | 1.320 | 33.5 | 1.0 | 25.4 | 100 |
| SFP15471774A | SFP15471774B | 1-3/4 | — | 1.774 | 45.1 | 1.547 | 39.3 | 1.0 | 25.4 | 50 |
| SFP17742000A | SFP17742000B | 2 | M45 | 2.000 | 50.8 | 1.774 | 45.1 | 1.0 | 25.4 | 50 |

HIGH TEMPERATURE PLUGS

Multi-Flanged Plugs

Specifications:

- Silicone 600°F (315°C)
- Hardness: Durometer (Shore A) 60 ± 5
- Color: See Table



Features:

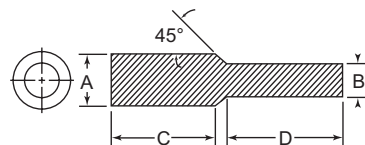
- Multi-Flange plugs are designed to mask plain or threaded holes
- Part will mask off the hole while allowing painting up to the hole
- Can fit into a range of holes due to the flexible fin design
- Parts are reusable
- Applications: Powder Coating, E-Coating, Plating and Anodizing

| Item No. | Color | A | | B | | C | | D | | E | | F | | G | | Bulk Pack Qty |
|----------|-----------|-------|------|-------|------|-------|------|-------|------|-------|------|-------|------|-------|------|---------------|
| | | in | mm | in | mm | in | mm | in | mm | in | mm | in | mm | in | mm | |
| 1426291 | Blue | 0.157 | 4.0 | 0.236 | 6.0 | 0.315 | 8.0 | 0.394 | 10.0 | — | — | 0.419 | 10.6 | 0.535 | 13.6 | 500 |
| 1426293 | Rusty Red | 0.315 | 8.0 | 0.394 | 10.0 | 0.472 | 12.0 | 0.551 | 14.0 | 0.630 | 16.0 | 0.748 | 19.0 | 0.925 | 23.5 | 200 |
| 1426295 | Green | 0.394 | 10.0 | 0.472 | 12.0 | 0.551 | 14.0 | 0.630 | 16.0 | 0.709 | 18.0 | 0.748 | 19.0 | 0.945 | 24.0 | 200 |

SPP Series Straight Pull Plugs for Thru Holes

Specifications:

- Natural Silicone 600°F (315°C)
Hardness: Durometer (Shore A) 55 ± 5
- Black EPDM 425°F (218°C)
Hardness: Durometer (Shore A) 50 ± 5
- Color: See Table



Features:

- Used to mask threaded or non-threaded through holes
- Used by pulling the thin end through the hole, stretching the larger end through the hole then releasing to let it compress and make a tight seal
- Silicone: premium masking material (due to high temperature and chemical resistance) can be used multiple times
- EPDM: reusable, economical material with slightly reduced heat resistance, but superior chemical resistance
- Applications: Powder Coating, E-Coating, Plating and Anodizing



To Assure Proper Fit:

Plugs

"A" dimension (major I.D.) must be about 4–10% larger than the thru hole to be plugged as the material will stretch during installation for easy insertion

| Item No. | Fits Through Holes | | | A | | B | | C | | D | | Bulk Pack Qty | | |
|----------|--------------------|--------------|---------------|-----------|-----------|-------|------|-------|------|-------|------|---------------|------|------|
| | Silicone (Natural) | EPDM (Black) | Unthreaded ID | UN Thread | M Threads | in | mm | in | mm | in | mm | | | |
| SPP0062A | SPP0062B | — | — | 0-80 | — | 0.062 | 1.6 | 0.047 | 1.2 | 0.375 | 9.5 | 0.337 | 8.6 | 1000 |
| SPP0067A | SPP0067B | — | — | — | — | 0.067 | 1.7 | 0.047 | 1.2 | 0.625 | 15.9 | 0.610 | 15.5 | 1000 |
| SPP0073A | SPP0073C | 1/16 | — | — | M2 | 0.073 | 1.9 | 0.047 | 1.2 | 0.612 | 15.5 | 0.590 | 15.0 | 1000 |
| SPP0091A | SPP0091C | — | — | — | — | 0.091 | 2.3 | 0.062 | 1.6 | 0.625 | 15.9 | 0.625 | 15.9 | 1000 |
| SPP0093A | SPP0093B | — | — | 2-56 | — | 0.093 | 2.4 | 0.062 | 1.6 | 0.700 | 17.8 | 0.700 | 17.8 | 1000 |
| SPP0105A | SPP0105C | — | — | — | M3 | 0.105 | 2.7 | 0.070 | 1.8 | 1.000 | 25.4 | 1.000 | 25.4 | 1000 |
| SPP0109A | SPP0109C | — | — | 4-40 | — | 0.109 | 2.8 | 0.062 | 1.6 | 1.000 | 25.4 | 1.000 | 25.4 | 1000 |
| SPP0118A | SPP0118C | — | — | — | — | 0.118 | 3.0 | 0.082 | 2.1 | 1.000 | 25.4 | 1.000 | 25.4 | 1000 |
| SPP0125A | SPP0125B | — | — | — | — | 0.125 | 3.2 | 0.082 | 2.1 | 0.625 | 15.9 | 0.625 | 15.9 | 500 |
| SPP0130A | SPP0130B | 1/8 | — | 6-32 | — | 0.130 | 3.3 | 0.082 | 2.1 | 0.650 | 16.5 | 0.700 | 17.8 | 1000 |
| SPP0140A | SPP0140C | — | — | — | M4 | 0.140 | 3.6 | 0.082 | 2.1 | 0.625 | 15.9 | 0.558 | 14.2 | 500 |
| SPP0154A | SPP0154B | — | — | — | — | 0.154 | 3.9 | 0.082 | 2.1 | 0.632 | 16.1 | 0.625 | 15.9 | 500 |
| SPP0156A | SPP0156B | — | — | 8-32 | — | 0.156 | 4.0 | 0.082 | 2.1 | 0.625 | 15.9 | 0.610 | 15.5 | 1000 |
| SPP0158A | SPP0158C | — | — | — | — | 0.158 | 4.0 | 0.093 | 2.4 | 1.250 | 31.8 | 1.250 | 31.8 | 500 |
| SPP0162A | SPP0162C | — | — | — | — | 0.162 | 4.1 | 0.093 | 2.4 | 0.625 | 15.9 | 0.581 | 14.8 | 1000 |
| SPP0187A | SPP0187C | — | — | — | — | 0.187 | 4.7 | 0.110 | 2.8 | 0.625 | 15.9 | 0.600 | 15.2 | 1000 |
| SPP0195A | SPP0195B | — | — | 10-32 | M5 | 0.195 | 5.0 | 0.110 | 2.8 | 0.625 | 15.9 | 0.625 | 15.9 | 500 |
| SPP0197A | SPP0197C | — | — | — | — | 0.197 | 5.0 | 0.110 | 2.8 | 1.000 | 25.4 | 1.000 | 25.4 | 500 |
| SPP0218A | SPP0218C | 3/16 | — | 1/4-20 | M6 | 0.218 | 5.5 | 0.110 | 2.8 | 1.000 | 25.4 | 1.000 | 25.4 | 1000 |
| SPP0225A | SPP0225B | — | — | — | — | 0.225 | 5.7 | 0.125 | 3.2 | 1.000 | 25.4 | 1.000 | 25.4 | 500 |
| SPP0257A | SPP0257B | 1/4 | — | — | — | 0.257 | 6.5 | 0.130 | 3.3 | 1.000 | 25.4 | 1.000 | 25.4 | 500 |
| SPP0275A | SPP0275C | — | — | 5/16-18 | M8 | 0.275 | 7.0 | 0.130 | 3.3 | 0.937 | 23.8 | 0.920 | 23.4 | 200 |
| SPP0281A | SPP0281C | — | — | — | — | 0.281 | 7.1 | 0.138 | 3.5 | 1.000 | 25.4 | 0.920 | 23.4 | 200 |
| SPP0312A | SPP0312C | — | — | — | — | 0.312 | 7.9 | 0.147 | 3.7 | 1.250 | 31.8 | 1.250 | 31.8 | 200 |
| SPP0332A | SPP0332B | 5/16 | — | — | — | 0.332 | 8.4 | 0.250 | 6.4 | 0.757 | 19.2 | 1.100 | 27.9 | 200 |
| SPP0335A | SPP0335C | — | — | — | — | 0.335 | 8.5 | 0.157 | 4.0 | 1.000 | 25.4 | 1.000 | 25.4 | 200 |
| SPP0350A | SPP0350C | — | — | 3/8-16 | — | 0.350 | 8.9 | 0.157 | 4.0 | 0.881 | 22.4 | 0.925 | 23.5 | 500 |
| SPP0388A | SPP0388B | 3/8 | — | — | M10 | 0.388 | 9.9 | 0.157 | 4.0 | 1.000 | 25.4 | 1.000 | 25.4 | 200 |
| SPP0400A | SPP0400C | — | — | — | — | 0.400 | 10.2 | 0.191 | 4.9 | 1.009 | 25.6 | 1.000 | 25.4 | 200 |
| SPP0414A | SPP0414B | — | — | — | — | 0.414 | 10.5 | 0.157 | 4.0 | 0.525 | 13.3 | 0.755 | 19.2 | 200 |
| SPP0440A | SPP0440B | — | — | — | — | 0.440 | 11.2 | 0.255 | 6.5 | 1.000 | 25.4 | 0.990 | 25.2 | 200 |
| SPP0445A | SPP0445C | 7/16 | — | 1/2-13 | M12 | 0.445 | 11.3 | 0.157 | 4.0 | 1.000 | 25.4 | 1.000 | 25.4 | 200 |
| SPP0468A | SPP0468C | — | — | 1/2-20 | — | 0.468 | 11.9 | 0.250 | 6.4 | 1.000 | 25.4 | 1.000 | 25.4 | 250 |
| SPP0500A | SPP0500B | — | — | — | — | 0.500 | 12.7 | 0.250 | 6.4 | 1.000 | 25.4 | 1.000 | 25.4 | 200 |
| SPP0510A | SPP0510B | 1/2 | — | — | — | 0.510 | 13.0 | 0.250 | 6.4 | 1.000 | 25.4 | 0.956 | 24.3 | 200 |
| SPP0530A | SPP0530B | — | — | 5/8-11 | M14 | 0.530 | 13.5 | 0.250 | 6.4 | 1.000 | 25.4 | 1.000 | 25.4 | 200 |
| SPP0612A | SPP0612B | — | — | — | — | 0.612 | 15.5 | 0.250 | 6.4 | 1.000 | 25.4 | 1.000 | 25.4 | 200 |
| SPP0640A | SPP0640C | 5/8 | — | 3/4-10 | — | 0.640 | 16.3 | 0.375 | 9.5 | 1.000 | 25.4 | 1.000 | 25.4 | 100 |
| SPP0700A | SPP0700C | 11/16 | — | — | — | 0.700 | 17.8 | 0.375 | 9.5 | 1.250 | 31.8 | 1.326 | 33.7 | 100 |
| SPP0770A | SPP0770C | 3/4 | — | — | M20 | 0.770 | 19.6 | 0.375 | 9.5 | 1.000 | 25.4 | 0.927 | 23.6 | 100 |
| SPP0896A | SPP0896B | 7/8 | — | — | — | 0.896 | 22.8 | 0.375 | 9.5 | 1.000 | 25.4 | 1.000 | 25.4 | 100 |
| SPP1020A | SPP1020B | 1 | — | — | — | 1.020 | 25.9 | 0.375 | 9.5 | 1.000 | 25.4 | 0.970 | 24.6 | 100 |
| SPP1380A | SPP1380B | 1-3/8 | — | — | — | 1.380 | 35.1 | 0.500 | 12.7 | 1.000 | 25.4 | 1.000 | 25.4 | 100 |

HIGH TEMPERATURE PLUGS

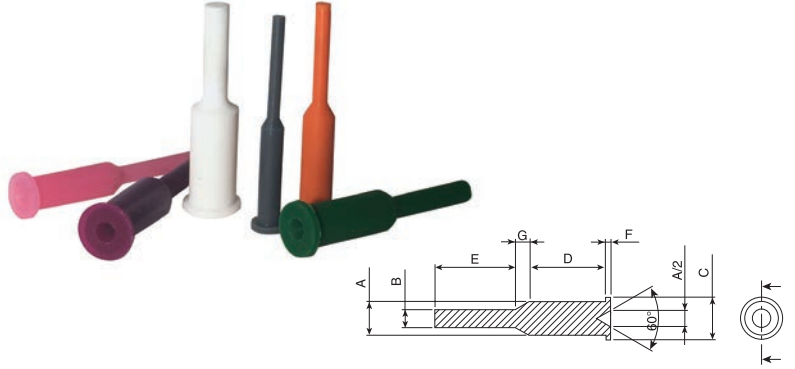
Flanged Pull Plugs

Specifications:

- Silicone 600°F (315°C)
- Hardness: Durometer (Shore A) 40 ± 5
- Color: See Table

Features:

- Flanged Pull Plugs are designed to mask plain or threaded holes
- Different color per size allows color coding product for easy identification
- Parts are reusable
- Applications: Ideal for Powder Coating, E-Coating, Plating and Anodizing



| Item No. | Color | A | | B | | C | | D | | E | | F | | G | | Bulk Pack Qty |
|----------|-----------|-------|------|-------|-----|-------|------|-------|------|-------|------|-------|-----|-------|-----|---------------|
| | | in | mm | in | mm | in | mm | in | mm | in | mm | in | mm | in | mm | |
| 1426297 | Red | 0.173 | 4.4 | 0.098 | 2.5 | 0.250 | 6.4 | 1.000 | 25.4 | 1.000 | 25.4 | 0.060 | 1.5 | 0.025 | 0.6 | 500 |
| 1426299 | Blue | 0.218 | 5.5 | 0.125 | 3.2 | 0.340 | 8.6 | 1.000 | 25.4 | 1.031 | 26.2 | 0.070 | 1.8 | 0.068 | 1.7 | 500 |
| 1426301 | Grey | 0.230 | 5.8 | 0.125 | 3.2 | 0.350 | 8.9 | 1.000 | 25.4 | 1.031 | 26.2 | 0.070 | 1.8 | 0.099 | 2.5 | 500 |
| 1426303 | Yellow | 0.285 | 7.2 | 0.160 | 4.1 | 0.400 | 10.2 | 1.000 | 25.4 | 1.062 | 27.0 | 0.070 | 1.8 | 0.098 | 2.5 | 500 |
| 1426305 | Orange | 0.335 | 8.5 | 0.160 | 4.1 | 0.460 | 11.7 | 1.000 | 25.4 | 1.031 | 26.2 | 0.070 | 1.8 | 0.128 | 3.3 | 500 |
| 1426307 | Pink | 0.350 | 8.9 | 0.187 | 4.7 | 0.473 | 12.0 | 1.000 | 25.4 | 1.062 | 27.0 | 0.070 | 1.8 | 0.148 | 3.8 | 500 |
| 1426309 | Green | 0.420 | 10.7 | 0.235 | 6.0 | 0.540 | 13.7 | 1.000 | 25.4 | 1.062 | 27.0 | 0.070 | 1.8 | 0.168 | 4.3 | 250 |
| 1426311 | Purple | 0.445 | 11.3 | 0.240 | 6.1 | 0.560 | 14.2 | 1.000 | 25.4 | 1.062 | 27.0 | 0.070 | 1.8 | 0.190 | 4.8 | 250 |
| 1426313 | White | 0.490 | 12.4 | 0.255 | 6.5 | 0.610 | 15.5 | 1.000 | 25.4 | 1.000 | 25.4 | 0.078 | 2.0 | 0.118 | 3.0 | 250 |
| 1426315 | Grey | 0.518 | 13.2 | 0.256 | 6.5 | 0.636 | 16.2 | 1.000 | 25.4 | 1.000 | 25.4 | 0.071 | 1.8 | 0.215 | 5.5 | 250 |
| 1426317 | Rusty Red | 0.545 | 13.8 | 0.275 | 7.0 | 0.663 | 16.8 | 1.000 | 25.4 | 1.000 | 25.4 | 0.071 | 1.8 | 0.138 | 3.5 | 250 |
| 1426319 | Red | 0.580 | 14.7 | 0.295 | 7.5 | 0.700 | 17.8 | 1.000 | 25.4 | 1.000 | 25.4 | 0.071 | 1.8 | 0.142 | 3.6 | 250 |

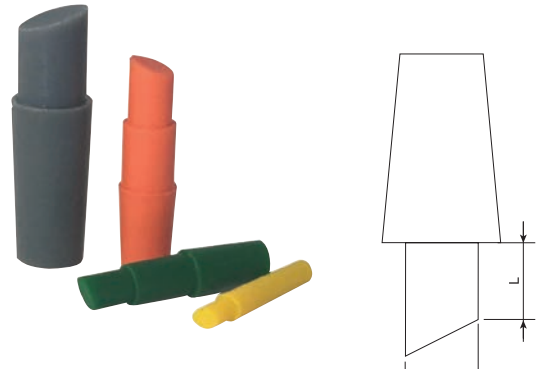
Sloping Edge Plugs

Specifications:

- Silicone 600°F (315°C)
- Hardness: Durometer (Shore A) 55 ± 5
- Color: See Table

Features:

- Used to mask metric threaded holes
- Place the sloping end of the plug into the appropriate threaded hole; once centered and located, screw the plug down into place until the whole thread is filled
- Easy removal by pulling on protruding plug
- Used to mask blind holes with limited access to the reverse side
- Parts are reusable
- Applications: Powder Coating, E-Coating, Plating and Anodizing



| Item No. | Color | Fits Threaded Hole | D mm | L mm | Bulk Pack Qty |
|----------|--------|--------------------|------|------|---------------|
| 1426343 | Blue | M3 | 2.5 | 5.0 | 1000 |
| 1426345 | Yellow | M4 | 3.4 | 6.7 | 1000 |
| 1426347 | Black | M5 | 4.3 | 7.5 | 1000 |
| 1426349 | Green | M6 | 5.1 | 7.5 | 1000 |

| Item No. | Color | Fits Threaded Hole | D mm | L mm | Bulk Pack Qty |
|----------|--------|--------------------|------|------|---------------|
| 1426351 | Orange | M8 | 6.9 | 10.0 | 500 |
| 1426353 | Blue | M10 | 8.5 | 13.0 | 500 |
| 1426355 | Grey | M12 | 10.5 | 14.5 | 250 |

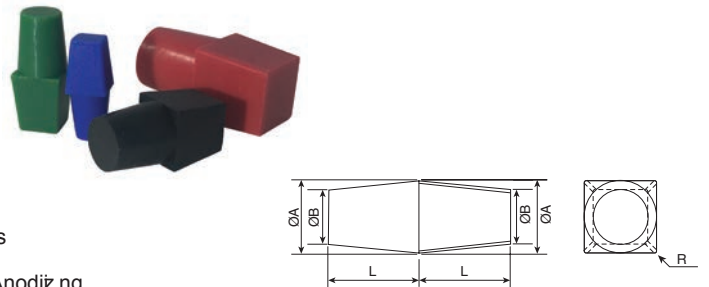
Dual Purpose Plugs

Specifications:

- Silicone 600°F (315°C)
- Hardness: Durometer (Shore A) 40 ± 5
- Color: See Table

Features:

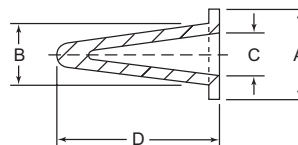
- Designed to plug both square or round holes and plain or threaded holes
- Will mask off the hole and allow finishing up to it
- Tapered to fit into a range of round or square hole sizes
- Parts are reusable
- Applications: Powder Coating, E-Coating, Plating and Anodizing



| Item No. | Color | A | | B | | L | | R | | Bulk Pack Qty |
|----------|-------|-------|------|-------|------|-------|------|------|-----|---------------|
| | | in | mm | in | mm | in | mm | in | mm | |
| 1426335 | Blue | 0.500 | 12.7 | 0.375 | 9.5 | 0.625 | 15.9 | 0.02 | 0.5 | 250 |
| 1426337 | Green | 0.625 | 15.9 | 0.500 | 12.7 | 0.750 | 19.1 | 0.02 | 0.5 | 100 |
| 1426339 | Black | 0.750 | 19.1 | 0.625 | 15.9 | 0.750 | 19.1 | 0.03 | 0.8 | 100 |
| 1426341 | Red | 1.000 | 25.4 | 0.875 | 22.2 | 1.000 | 25.4 | 0.04 | 1.0 | 50 |

HIGH TEMPERATURE PLUGS

SCON Series Tapered Flexible Cone Plugs



Specifications:

- Natural Silicone 600°F (316°C)
Hardness: Durometer (Shore A) 55 ± 5
- Black EPDM 425°F (218°C)
Hardness: Durometer (Shore A) 50 ± 5

See pages 21 and 22 for Application Wia rds

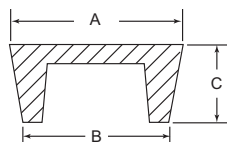
Features:

- The tapered cone design allows the part to plug multiple inner diameter or cap multiple outside diameters
- Silicone: premium masking material (due to high temperature rating) can be used multiple times
- EPDM: reusable, economical material with slightly reduced heat resistance, but superior chemical resistance
- Applications: Powder Coating, E-Coating, Plating and Anodiz ng



| Item No. | | A | | B | | C | | D | | Bulk Pack Qty |
|--------------------|--------------|-------|------|-------|------|-------|------|-------|------|---------------|
| Silicone (Natural) | EPDM (Black) | in | mm | in | mm | in | mm | in | mm | |
| SCON250130A | SCON250130B | 0.500 | 12.7 | 0.250 | 6.3 | 0.130 | 3.3 | 0.906 | 23.0 | 1000 |
| SCON316216A | SCON316216B | 0.500 | 12.7 | 0.316 | 8.0 | 0.216 | 5.5 | 1.000 | 25.4 | 1000 |
| SCON335177A | SCON335177C | 0.625 | 15.9 | 0.335 | 8.5 | 0.177 | 4.5 | 1.000 | 25.4 | 1000 |
| SCON394197A | SCON394197B | 0.650 | 16.5 | 0.394 | 10.0 | 0.197 | 5.0 | 1.102 | 27.0 | 1000 |
| SCON400230A | SCON400230B | 0.635 | 16.1 | 0.400 | 10.2 | 0.230 | 5.8 | 1.100 | 27.9 | 1000 |
| SCON551315A | SCON551315C | 0.750 | 19.1 | 0.551 | 13.0 | 0.315 | 8.0 | 1.417 | 35.0 | 1000 |
| SCON689453A | SCON689453C | 0.980 | 24.9 | 0.689 | 17.5 | 0.453 | 11.5 | 1.500 | 38.1 | 250 |
| SCON767532A | SCON767532B | 1.100 | 27.9 | 0.767 | 19.5 | 0.532 | 13.5 | 2.009 | 51.0 | 200 |
| SCON819583A | SCON819583C | 1.000 | 25.4 | 0.819 | 20.8 | 0.583 | 14.8 | 1.929 | 48.0 | 200 |
| SCON866630A | SCON866630C | 1.220 | 30.0 | 0.866 | 21.0 | 0.630 | 16.0 | 2.087 | 53.0 | 200 |

HSTP Series Hollow Tapered Masking Plugs

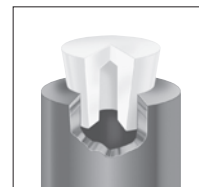


Specifications:

- Natural Silicone 600°F (316°C)
Hardness: Durometer (Shore A) 55 ± 5
- Black EPDM 425°F (218°C)
Durometer (Shore A) 50 ± 5

Features:

- Plugs threaded or unthreaded holes
- Hollow cores provide economical solution for large diameter holes
- Hollow core aids compression for improved sealing
- Silicone: premium masking material (due to high temperature rating) can be used multiple times
- EPDM: reusable, economical material with slightly reduced heat resistance, but superior chemical resistance
- Applications: Powder Coating, E-Coating, Plating and Anodiz ng
- For non-hollow Tapered Mask ng Plugs see STP Series on page 11



To Assure Proper Fit and Easy Handling:



We suggest that you select "A" dimension to be approximately 15% larger than the hole diameter

| Item No. | | A | | B | | C | | Bulk Pack Qty |
|--------------------|--------------|-------|-------|-------|------|-------|------|---------------|
| Silicone (Natural) | EPDM (Black) | In | mm | In | mm | In | mm | |
| HSTP079106A | HSTP079106C | 1.061 | 27.0 | 0.797 | 20.3 | 1.000 | 25.4 | 200 |
| HSTP109118A | HSTP109118C | 1.181 | 30.0 | 1.094 | 27.8 | 1.000 | 25.4 | 50 |
| HSTP118145A | HSTP118145C | 1.456 | 37.0 | 1.180 | 30.0 | 1.000 | 25.4 | 50 |
| HSTP122153A | HSTP122153C | 1.535 | 39.0 | 1.220 | 31.0 | 1.000 | 25.4 | 50 |
| HSTP130161A | HSTP130161C | 1.614 | 41.0 | 1.300 | 33.0 | 1.000 | 25.4 | 50 |
| HSTP141169A | HSTP141169C | 1.693 | 43.0 | 1.417 | 36.0 | 1.000 | 25.4 | 50 |
| HSTP145177A | HSTP145177C | 1.772 | 45.0 | 1.457 | 37.0 | 1.000 | 25.4 | 50 |
| HSTP149181A | HSTP149181C | 1.810 | 46.0 | 1.496 | 38.0 | 1.000 | 25.4 | 50 |
| HSTP165196A | HSTP165196C | 1.968 | 50.0 | 1.653 | 42.0 | 1.000 | 25.4 | 25 |
| HSTP177208A | HSTP177208C | 2.086 | 53.0 | 1.770 | 45.0 | 1.000 | 25.4 | 25 |
| HSTP189220A | HSTP189220C | 2.203 | 56.0 | 1.890 | 48.0 | 1.000 | 25.4 | 25 |
| HSTP196248A | HSTP196248C | 2.480 | 63.0 | 1.968 | 50.0 | 1.000 | 25.4 | 25 |
| HSTP212252A | HSTP212252C | 2.520 | 64.0 | 2.125 | 54.0 | 1.000 | 25.4 | 25 |
| HSTP228267A | HSTP228267C | 2.677 | 68.0 | 2.283 | 58.0 | 1.000 | 25.4 | 25 |
| HSTP244295A | HSTP244295C | 2.953 | 75.0 | 2.440 | 62.0 | 1.377 | 35.0 | 25 |
| HSTP295354A | HSTP295354D | 3.543 | 90.0 | 2.953 | 75.0 | 1.535 | 39.0 | 25 |
| HSTP326405A | HSTP326405C | 4.055 | 103.0 | 3.267 | 83.0 | 1.535 | 39.0 | 20 |
| HSTP354500A | HSTP354500C | 5.000 | 127.0 | 3.543 | 90.0 | 1.968 | 50.0 | 10 |

HIGH TEMPERATURE PLUGS

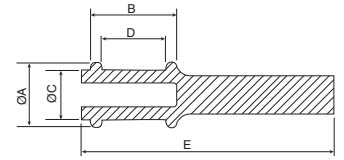
First and Last Thread Protection Plugs

Specifications:

- Silicone 600°F (315°C)
- Hardness: Durometer (Shore A) 40 ± 5
- Color: See Table

Features:

- Designed to protect weld nuts for a variety of metric thread sizes
- Mask off the chamfer and protects both the first turn through the last turn of threads from contamination
- Will not blow out due to air pressure
- Parts are reusable
- Applications: Powder Coating, E-Coating, Plating and Anodizing



| Item No. | Color | Thread Size | A | | B | | C | | D | | E | | Bulk Pack Qty |
|----------|--------|-------------|-------|------|-------|------|-------|------|-------|------|-------|------|---------------|
| | | | in | mm | in | mm | in | mm | in | mm | in | mm | |
| 1426321 | Black | M5 | 0.273 | 6.9 | 0.369 | 9.4 | 0.160 | 4.1 | 0.245 | 6.2 | 1.657 | 42.1 | 500 |
| 1426323 | Green | M6 | 0.307 | 7.8 | 0.404 | 10.3 | 0.197 | 5.0 | 0.265 | 6.7 | 1.164 | 29.6 | 500 |
| 1426325 | Red | M8 | 0.374 | 9.5 | 0.455 | 11.6 | 0.264 | 6.7 | 0.315 | 8.0 | 1.218 | 30.9 | 500 |
| 1426327 | Green | M10 | 0.445 | 11.3 | 0.494 | 12.5 | 0.335 | 8.5 | 0.354 | 9.0 | 1.254 | 31.9 | 500 |
| 1426329 | Purple | M12 | 0.512 | 13.0 | 0.597 | 15.2 | 0.406 | 10.3 | 0.457 | 11.6 | 1.612 | 40.9 | 250 |
| 1426331 | White | M16 | 0.685 | 17.4 | 0.690 | 17.5 | 0.535 | 13.6 | 0.550 | 14.0 | 1.880 | 47.8 | 100 |
| 1426333 | Blue | M20 | 0.827 | 21.0 | 0.850 | 21.6 | 0.669 | 17.0 | 0.709 | 18.0 | 2.162 | 54.9 | 100 |

SPFT Series

First-Thread Protection Plugs

Specifications:

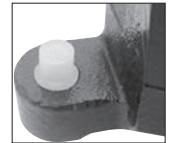
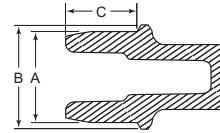
- Natural Silicone 600°F (316°C)
Hardness: Durometer (Shore A) 55 ± 5
- Black EPDM 425°F (218°C)
Hardness: Durometer (Shore A) 50 ± 5

Features:

- Provides masking to the first thread of standard female threads
- Ergonomically friendly pull tab for simple installation and removal
- Silicone: premium masking material (due to high temperature rating) can be used multiple times
- EPDM: reusable, economical material with slightly reduced heat resistance, but superior chemical resistance
- Applications: Powder Coating, E-Coating, Plating and Anodizing



See pages 21 and 22 for Application Wire



| Item No. | Thread Size | | A | | B | | C | | Bulk Pack Qty | | |
|-----------|-------------|---------|-----|---|-------|------|-------|------|---------------|------|-----|
| | Silicone | EPDM | UNC | M | in | mm | in | mm | | | |
| SPFT1/4A | SPFT1/4B | 1/4-20 | — | M | 0.218 | 5.5 | 0.260 | 6.6 | 0.200 | 5.1 | 500 |
| SPFT5/16A | SPFT5/16B | 5/16-18 | — | M | 0.278 | 7.1 | 0.320 | 8.1 | 0.200 | 5.1 | 500 |
| SPFT3/8A | SPFT3/8B | 3/8-16 | — | M | 0.340 | 8.6 | 0.420 | 10.7 | 0.260 | 6.6 | 250 |
| SPFT7/16A | SPFT7/16B | 7/16-14 | — | M | 0.392 | 10.0 | 0.440 | 11.2 | 0.350 | 8.9 | 250 |
| SPFT1/2A | SPFT1/2B | 1/2-13 | — | M | 0.451 | 11.5 | 0.510 | 13.0 | 0.350 | 8.9 | 250 |
| SPFTM6A | SPFTM6B | — | M6 | M | 0.208 | 5.3 | 0.248 | 6.3 | 0.197 | 5.0 | 500 |
| SPFTM8A | SPFTM8B | — | M8 | M | 0.283 | 7.2 | 0.331 | 8.4 | 0.197 | 5.0 | 500 |
| SPFTM10A | SPFTM10B | — | M10 | M | 0.358 | 9.1 | 0.409 | 10.4 | 0.276 | 7.0 | 250 |
| SPFTM12A | SPFTM12B | — | M12 | M | 0.426 | 10.8 | 0.489 | 12.4 | 0.346 | 8.8 | 250 |
| SPFTM16A | SPFTM16B | — | M16 | M | 0.570 | 14.5 | 0.670 | 17.0 | 0.450 | 11.4 | 100 |
| SPFTM20A | SPFTM20B | — | M20 | M | 0.724 | 18.4 | 0.811 | 20.6 | 0.512 | 13.0 | 100 |

Mousetail Pull Plugs

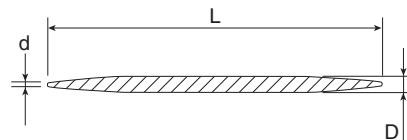


Specifications:

- Silicone 600°F (315°C)
- Hardness: Durometer (Shore A) 75 ± 5
- Color: Natural

Features:

- Ideal for plugging small holes
- Capable of stretching to provide a leak proof seal
- Parts are reusable
- Applications: Powder Coating, E-Coating, Plating and Anodizing



| Item No. | D | | d | | L | | Bulk Pack Qty |
|----------|-------|-----|-------|-----|-------|------|---------------|
| | in | mm | in | mm | in | mm | |
| 1426357 | 0.079 | 2.0 | 0.022 | 0.6 | 1.330 | 33.8 | 1000 |
| 1426359 | 0.080 | 2.0 | 0.023 | 0.6 | 2.080 | 52.8 | 1000 |
| 1426361 | 0.083 | 2.1 | 0.031 | 0.8 | 1.930 | 49.0 | 1000 |

| Item No. | D | | d | | L | | Bulk Pack Qty |
|----------|-------|-----|-------|-----|-------|------|---------------|
| | in | mm | in | mm | in | mm | |
| 1426363 | 0.100 | 2.5 | 0.031 | 0.8 | 2.080 | 52.8 | 1000 |
| 1426365 | 0.125 | 3.2 | 0.023 | 0.6 | 2.000 | 50.8 | 1000 |

HIGH TEMPERATURE PLUGS & MASKING TAPES

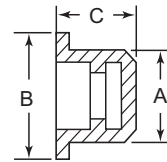
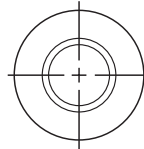
FT Series TPE Plugs

Specifications:

- Thermoplastic Elastomer 203°F (95°C)
- Color: Black

Features:

- Highly resistant to shredding
- Ideal for threaded applications
- Good resistance to acids



| Item No. | A | | B | | C | | Bulk Pack Qty |
|----------|-------|-------|-------|-------|-------|-------|---------------|
| | in | mm | in | mm | in | mm | |
| 18071B | 0.125 | 3.20 | 0.276 | 7.00 | 0.354 | 9.00 | 10000 |
| 12049B | 0.197 | 5.00 | 0.433 | 11.00 | 0.471 | 11.99 | 10000 |
| 12050B | 0.236 | 5.99 | 0.472 | 11.99 | 0.471 | 11.99 | 10000 |
| 12051B | 0.275 | 6.99 | 0.511 | 12.98 | 0.471 | 11.99 | 10000 |
| 12052B | 0.315 | 8.00 | 0.551 | 14.00 | 0.471 | 11.99 | 10000 |
| 12053B | 0.354 | 8.99 | 0.580 | 14.99 | 0.471 | 11.99 | 10000 |
| 12054B | 0.393 | 9.98 | 0.629 | 15.98 | 0.471 | 11.99 | 10000 |
| 12055B | 0.433 | 11.00 | 0.669 | 16.99 | 0.471 | 11.99 | 10000 |
| 12056B | 0.472 | 11.99 | 0.787 | 19.99 | 0.471 | 11.99 | 8000 |
| 12057B | 0.511 | 12.98 | 0.826 | 20.98 | 0.551 | 14.00 | 8000 |
| 12058B | 0.551 | 14.00 | 0.866 | 22.00 | 0.551 | 14.00 | 6000 |
| 12059B | 0.580 | 14.99 | 0.905 | 22.99 | 0.571 | 14.50 | 6000 |
| 12060B | 0.630 | 16.00 | 0.945 | 24.00 | 0.551 | 14.00 | 6000 |
| FLP17A | 0.669 | 17.00 | 1.063 | 27.00 | 0.531 | 13.50 | 4000 |
| 12062B | 0.709 | 18.01 | 1.102 | 27.99 | 0.551 | 14.00 | 4000 |

| Item No. | A | | B | | C | | Bulk Pack Qty |
|----------|-------|-------|-------|-------|-------|-------|---------------|
| | in | mm | in | mm | in | mm | |
| 12063B | 0.748 | 19.00 | 1.142 | 29.01 | 0.551 | 14.00 | 4000 |
| 12064B | 0.787 | 19.99 | 1.181 | 30.00 | 0.551 | 14.00 | 4000 |
| 12065B | 0.827 | 21.01 | 1.220 | 30.99 | 0.551 | 14.00 | 3000 |
| FLP21A | 0.879 | 22.33 | 1.260 | 32.00 | 0.551 | 14.00 | 2500 |
| 12067B | 0.906 | 23.01 | 1.299 | 32.99 | 0.630 | 16.00 | 3000 |
| 12068B | 0.945 | 24.00 | 1.339 | 34.01 | 0.630 | 16.00 | 2500 |
| 12069B | 0.984 | 24.99 | 1.378 | 35.00 | 0.630 | 16.00 | 2000 |
| 12070B | 1.024 | 26.01 | 1.417 | 35.99 | 0.630 | 16.00 | 2000 |
| 12071B | 1.063 | 27.00 | 1.457 | 37.01 | 0.630 | 16.00 | 2000 |
| 12072B | 1.102 | 27.99 | 1.496 | 38.00 | 0.630 | 16.00 | 2000 |
| 12073B | 1.142 | 29.01 | 1.535 | 38.99 | 0.630 | 16.00 | 1300 |
| FLP30A | 1.190 | 30.23 | 1.400 | 35.56 | 0.630 | 16.00 | 1500 |
| 12501B | 1.575 | 40.01 | 1.969 | 50.01 | 0.866 | 22.00 | 700 |
| 12502B | 1.850 | 46.99 | 2.244 | 57.00 | 0.866 | 22.00 | 500 |

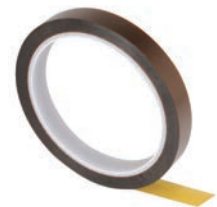
MTK Series Polyimide Tapes

Specifications:

- Material: 1-Mil Polyimide Film with Silicone Adhesive
- 500°F (260°C)
- Color: Amber

Features:

- Excellent heat and solvent resistance, dielectric strength (6500 V/lts) and highly conformable
- Cleanly removes in one piece after use
- Applications: High Temperature Processes, Powder Coating, Soldering, Electrical Insulation and PC Boards



| Item No. | Roll Width | | Roll Length | | Pack Qty |
|----------|------------|------|-------------|------|----------|
| | in | mm | Yds | m | |
| MTK0102A | 1/4 | 6.4 | 36 | 32.9 | 1 |
| MTK0103A | 3/8 | 9.5 | 36 | 32.9 | 1 |
| MTK0105A | 1/2 | 12.7 | 36 | 32.9 | 1 |
| MTK0107A | 3/4 | 19.1 | 36 | 32.9 | 1 |
| MTK0110A | 1 | 25.4 | 36 | 32.9 | 1 |

| Item No. | Roll Width | | Roll Length | | Pack Qty |
|----------|------------|-------|-------------|------|----------|
| | in | mm | Yds | m | |
| MTK0115A | 1 - 1/2 | 38.1 | 36 | 32.9 | 1 |
| MTK0120A | 2 | 50.8 | 36 | 32.9 | 1 |
| MTK0130A | 3 | 76.2 | 36 | 32.9 | 1 |
| MTK0140A | 4 | 101.6 | 36 | 32.9 | 1 |

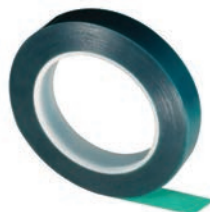
MTP Series Green Polyester Tapes

Specifications:

- Material: 2-Mil Polyester Film with Silicone Adhesive
- 400°F (204°C)
- Color: Green

Features:

- Excellent heat and solvent resistance
- Industry standard
- No shrinkage
- Cleanly removes in one piece after use, without leaving residue
- Applications: Powder Coating, E-Coating, Plating and Anodizing



| Item No. | Roll Width | | Roll Length | | Pack Qty |
|----------|------------|-------|-------------|------|----------|
| | in | mm | Yds | m | |
| MTP0202A | 1/4 | 6.4 | 72 | 65.8 | 1 |
| MTP0203A | 3/8 | 9.5 | 72 | 65.8 | 1 |
| MTP0205A | 1/2 | 12.7 | 72 | 65.8 | 1 |
| MTP0206A | 5/8 | 12.7 | 72 | 65.8 | 1 |
| MTP0207A | 3/4 | 19.1 | 72 | 65.8 | 1 |
| MTP0208A | 7/8 | 22.2 | 72 | 65.8 | 1 |
| MTP0210A | 1 | 25.4 | 72 | 65.8 | 1 |
| MTP0215A | 1 - 1/2 | 38.1 | 72 | 65.8 | 1 |
| MTP0220A | 2 | 50.8 | 72 | 65.8 | 1 |
| MTP0230A | 3 | 76.2 | 72 | 65.8 | 1 |
| MTP0240A | 4 | 101.6 | 72 | 65.8 | 1 |
| MTP0250A | 5 | 127.0 | 72 | 65.8 | 1 |
| MTP0260A | 6 | 152.4 | 72 | 65.8 | 1 |

MTHC Series High Temperature Crepe Tapes

Specifications:

- Material: 7.3-Mil Crepe Tape with High Temperature Rubber Adhesive
- 325°F (163°C)
- Color: Tan

Features:

- A thick pressure sensitive masking tape that is easy to apply and remove with clean lines
- Best removed when it is warm or hot, but can also be removed when cold
- Applications: Low Temperature Liquid and Powder Coatings



| Item No. | Roll Width | | Roll Length | | Pack Qty |
|-----------|------------|-------|-------------|------|----------|
| | in | mm | Yds | m | |
| MTHC0025A | 1/4 | 6.4 | 60 | 54.9 | 1 |
| MTHC0037A | 3/8 | 9.5 | 60 | 54.9 | 1 |
| MTHC0050A | 1/2 | 12.7 | 60 | 54.9 | 1 |
| MTHC0062A | 5/8 | 12.7 | 60 | 54.9 | 1 |
| MTHC0075A | 3/4 | 19.1 | 60 | 54.9 | 1 |
| MTHC0087A | 7/8 | 22.2 | 60 | 54.9 | 1 |
| MTHC0100A | 1 | 25.4 | 60 | 54.9 | 1 |
| MTHC0150A | 1 - 1/2 | 38.1 | 60 | 54.9 | 1 |
| MTHC0200A | 2 | 50.8 | 60 | 54.9 | 1 |
| MTHC0250A | 2 - 1/2 | 63.5 | 60 | 54.9 | 1 |
| MTHC0300A | 3 | 76.2 | 60 | 54.9 | 1 |
| MTHC0400A | 4 | 101.6 | 60 | 54.9 | 1 |
| MTHC0500A | 5 | 127.0 | 60 | 54.9 | 1 |
| MTHC0600A | 6 | 152.4 | 60 | 54.9 | 1 |

MASKING DISCS

MTPD Series Green Polyester Discs

Specifications:

- Material: 2-Mil Polyester Film with 1.4 Mils of Silicone Adhesive
- Temp Rating: 400°F (204°C)
- Color: Green

Features:

- Excellent heat and solvent resistance
- Industry standard product
- No shrinkage
- Supplied with split-back liner for easy removal from roll (unless marked*)
- Cleanly removes in one piece after use, without leaving residue
- Applications: Powder Coating, E-Coating, Plating and Anodizing



| Item No. | Disc Diameter | | Discs Per Roll | |
|-------------|---------------|----------|----------------|------|
| | in | mm | | |
| MTPD020187A | 0.187 | 3/16 | 4.75 | 5000 |
| MTPD020250A | 0.250 | 1/4 | 6.35 | 5000 |
| MTPD020312A | 0.312 | 5/16 | 7.92 | 5000 |
| MTPD020375A | 0.375 | 3/8 | 9.53 | 5000 |
| MTPD020406A | 0.406 | 13/32 | 10.31 | 5000 |
| MTPD020437A | 0.437 | 7/16 | 11.10 | 5000 |
| MTPD020500A | 0.500 | 1/2 | 12.70 | 2500 |
| MTPD020562A | 0.562 | 9/16 | 14.27 | 2500 |
| MTPD020625A | 0.625 | 5/8 | 15.88 | 2000 |
| MTPD020687A | 0.687 | 11/16 | 17.45 | 2000 |
| MTPD020750A | 0.750 | 3/4 | 19.05 | 2000 |
| MTPD020781A | 0.781 | 25/32 | 19.84 | 4000 |
| MTPD020787A | 0.787 | — | 20.00 | 4000 |
| MTPD020812B | 0.812 | 13/16 | 20.63 | 1000 |
| MTPD020875A | 0.875 | 7/8 | 22.23 | 2000 |
| MTPD020937A | 0.937 | 15/16 | 23.80 | 2000 |
| MTPD021000A | 1.000 | 1 | 25.40 | 2000 |
| MTPD021062A | 1.062 | 1 - 1/16 | 26.95 | 2000 |
| MTPD021125A | 1.125 | 1 - 1/8 | 28.58 | 1000 |
| MTPD021188A | 1.188 | 1 - 3/16 | 30.18 | 1000 |
| MTPD021250A | 1.250 | 1 - 1/4 | 31.75 | 1000 |

| Item No. | Disc Diameter | | Discs Per Roll | |
|--------------|---------------|----------|----------------|------|
| | in | mm | | |
| MTPD021312A | 1.312 | 1 - 5/16 | 33.32 | 1000 |
| MTPD021375A | 1.375 | 1 - 3/8 | 34.93 | 1000 |
| MTPD021500A | 1.500 | 1 - 1/2 | 38.10 | 1000 |
| MTPD021562A* | 1.562 | 1 - 9/16 | 39.67 | 1000 |
| MTPD021625A | 1.625 | 1 - 5/8 | 41.28 | 1000 |
| MTPD021750A | 1.750 | 1 - 3/4 | 44.45 | 1000 |
| MTPD021875A | 1.875 | 1 - 7/8 | 47.63 | 1000 |
| MTPD022000A | 2.000 | 2 | 50.80 | 500 |
| MTPD022125A | 2.125 | 2 - 1/8 | 53.98 | 500 |
| MTPD022250A | 2.250 | 2 - 1/4 | 57.15 | 500 |
| MTPD022375A | 2.375 | 2 - 3/8 | 60.33 | 500 |
| MTPD022500A | 2.500 | 2 - 1/2 | 63.50 | 500 |
| MTPD022750A | 2.750 | 2 - 3/4 | 69.85 | 500 |
| MTPD023000A | 3.000 | 3 | 76.20 | 500 |
| MTPD023250A | 3.250 | 3 - 1/4 | 82.55 | 500 |
| MTPD023500A | 3.500 | 3 - 1/2 | 88.90 | 500 |
| MTPD023625A | 3.625 | 3 - 5/8 | 92.08 | 500 |
| MTPD023750A | 3.750 | 3 - 3/4 | 95.25 | 100 |
| MTPD024000A | 4.000 | 4 | 101.60 | 250 |
| MTPD025000A | 5.000 | 5 | 127.00 | 250 |
| MTPD026000A | 6.000 | 6 | 152.40 | 250 |

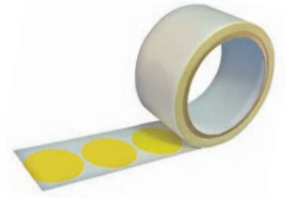
MTHCD Series High Temperature Crepe Discs

Specifications:

- Material: 7.3-Mil Crepe Tape with High-Temperature Rubber Adhesive
- Temperature Rating: 325°F (163°C)
- Color: Tan

Features:

- A thick pressure sensitive masking tape that is easy to apply and remove with clean lines
- Best removed when warm or hot, but can be removed when cold
- Applications: low-temperature paints and powder coatings



| Item No. | Disc Diameter | | Discs Per Roll | |
|------------|---------------|---------|----------------|------|
| | in | mm | | |
| MTHCD0250A | 0.250 | 1/4 | 6.35 | 5000 |
| MTHCD0375A | 0.375 | 3/8 | 9.53 | 5000 |
| MTHCD0500A | 0.500 | 1/2 | 12.70 | 5000 |
| MTHCD0625A | 0.625 | 5/8 | 15.88 | 5000 |
| MTHCD0750A | 0.750 | 3/4 | 19.05 | 4000 |
| MTHCD0875A | 0.875 | 7/8 | 22.23 | 2000 |
| MTHCD1000A | 1.000 | 1 | 25.40 | 2000 |
| MTHCD1125A | 1.125 | 1 - 1/8 | 28.58 | 2000 |

| Item No. | Disc Diameter | | Discs Per Roll | |
|------------|---------------|---------|----------------|------|
| | in | mm | | |
| MTHCD1250A | 1.250 | 1 - 1/4 | 31.75 | 2000 |
| MTHCD1375A | 1.375 | 1 - 3/8 | 34.93 | 2000 |
| MTHCD1500A | 1.500 | 1 - 1/2 | 38.10 | 2000 |
| MTHCD1625A | 1.625 | 1 - 5/8 | 41.28 | 1000 |
| MTHCD1750A | 1.750 | 1 - 3/4 | 44.45 | 1000 |
| MTHCD1875A | 1.875 | 1 - 7/8 | 47.63 | 1000 |
| MTHCD2000A | 2.000 | 2 | 50.80 | 500 |

MTKD Series Polyimide Discs

Specifications:

- Material: 1-Mil Polyimide Film with Silicone Adhesive
- Temperature Rating: 500°F (260°C)
- Color: Amber

Features:

- Excellent heat and solvent resistance, dielectric strength (6500 volts) and highly conformable
- Cleanly removes in one piece after use
- Applications: high-temperature processes, powder coating, soldering, electrical insulation and PC boards



| Item No. | Disc Diameter | | Discs Per Roll | |
|-------------|---------------|-------|----------------|------|
| | in | mm | | |
| MTKD010187A | 0.187 | 3/16 | 4.75 | 5000 |
| MTKD010250A | 0.250 | 1/4 | 6.35 | 5000 |
| MTKD010312A | 0.312 | 5/16 | 7.92 | 5000 |
| MTKD010375A | 0.375 | 3/8 | 9.53 | 5000 |
| MTKD010437A | 0.437 | 7/16 | 11.10 | 5000 |
| MTKD010500A | 0.500 | 1/2 | 12.70 | 2500 |
| MTKD010562A | 0.562 | 9/16 | 14.27 | 2500 |
| MTKD010625A | 0.625 | 5/8 | 15.88 | 2000 |
| MTKD010687A | 0.687 | 11/16 | 17.45 | 2000 |
| MTKD010750A | 0.750 | 3/4 | 19.05 | 2000 |
| MTKD010875A | 0.875 | 7/8 | 22.23 | 2000 |
| MTKD011000A | 1.000 | 1 | 25.40 | 2000 |

| Item No. | Disc Diameter | | Discs Per Roll | |
|-------------|---------------|----------|----------------|------|
| | in | mm | | |
| MTKD011125A | 1.125 | 1 - 1/8 | 28.58 | 1000 |
| MTKD011188A | 1.188 | 1 - 3/16 | 30.18 | 1000 |
| MTKD011250A | 1.250 | 1 - 1/4 | 31.75 | 1000 |
| MTKD011375A | 1.375 | 1 - 3/8 | 34.93 | 1000 |
| MTKD011500A | 1.500 | 1 - 1/2 | 38.10 | 1000 |
| MTKD011625A | 1.625 | 1 - 5/8 | 41.28 | 1000 |
| MTKD011750A | 1.750 | 1 - 3/4 | 44.45 | 1000 |
| MTKD011875A | 1.875 | 1 - 7/8 | 47.63 | 1000 |
| MTKD012000A | 2.000 | 2 | 50.80 | 500 |
| MTKD012500A | 2.500 | 2 - 1/2 | 63.50 | 500 |
| MTKD013000A | 3.000 | 3 | 76.20 | 500 |
| MTKD014000A | 4.000 | 4 | 101.60 | 250 |

MASKING HOOKS

HV, HS and HC Series V, S and C Style Hooks



HV Series



HS Series



HC Series

Specifications:

- Material: Cold drawn spring steel

Features:

- The HV-style hook design retains its ground longer
- The HS-style and HC-style hook are ideal for wider parts or multiple styles of parts with varying thicknesses

| HC Style | | HS Style | | HV Style | | Length | | Wire Size | | Capacity (Approx) | |
|----------|---------------|----------|---------------|----------|---------------|--------|-------|-----------|-----|-------------------|------|
| Item No. | Bulk Pack Qty | Item No. | Bulk Pack Qty | Item No. | Bulk Pack Qty | in | mm | in | mm | Lbs | kgs |
| HC2062A | 3000 | HS2062A | 3000 | HV2044A | 3000 | 2 | 50.8 | 0.044 | 1.1 | 4 | 1.8 |
| HC2076A | 3000 | HS2076A | 3000 | HV2062A | 3000 | 2 | 50.8 | 0.062 | 1.6 | 8 | 3.6 |
| HC3044A | 3000 | HS3044A | 3000 | HV2076A | 3000 | 2 | 50.8 | 0.076 | 1.9 | 20 | 9.1 |
| HC3062A | 3000 | HS3062A | 3000 | — | — | 3 | 76.2 | 0.044 | 1.1 | 4 | 1.8 |
| HC3076A | 2000 | HS3076A | 2000 | HV3062A | 3000 | 3 | 76.2 | 0.062 | 1.6 | 8 | 3.6 |
| HC4044A | 2000 | HS4044A | 2000 | HV3076A | 2000 | 3 | 76.2 | 0.076 | 1.9 | 20 | 9.1 |
| HC4062A | 2000 | HS4062A | 2000 | HV4044A | 2000 | 4 | 101.6 | 0.044 | 1.1 | 4 | 1.8 |
| HC4076A | 1000 | HS4076A | 1000 | HV4062A | 2000 | 4 | 101.6 | 0.062 | 1.6 | 8 | 3.6 |
| HC4120A | 2000 | HS4120A | 2000 | HV4076A | 1000 | 4 | 101.6 | 0.076 | 1.9 | 20 | 9.1 |
| HC4180A | 500 | HS4180A | 500 | HV4120A | 2000 | 4 | 101.6 | 0.120 | 3.0 | 40 | 18.1 |
| — | — | — | — | HV4180A | 1000 | 4 | 101.6 | 0.180 | 4.6 | 80 | 36.3 |
| — | — | — | — | HV6044A | 1000 | 6 | 152.4 | 0.044 | 1.1 | 4 | 1.8 |
| HC6062A | 1000 | HS6062A | 1000 | HV6062A | 1000 | 6 | 152.4 | 0.062 | 1.6 | 8 | 3.6 |
| HC6076A | 1000 | HS6076A | 1000 | HV6076A | 1000 | 6 | 152.4 | 0.076 | 1.9 | 20 | 9.1 |
| HC6120A | 1000 | HS6120A | 1000 | HV6120A | 1000 | 6 | 152.4 | 0.120 | 3.0 | 40 | 18.1 |
| HC6180A | 500 | HS6180A | 500 | HV6180A | 500 | 6 | 152.4 | 0.180 | 4.6 | 80 | 36.3 |
| HC8076A | 1500 | HS8076A | 1000 | HV8076A | 500 | 8 | 203.2 | 0.076 | 1.9 | 20 | 9.1 |
| HC8120A | 500 | HS8120A | 500 | HV8120A | 500 | 8 | 203.2 | 0.120 | 3.0 | 40 | 18.1 |
| HC8180A | 250 | HS8180A | 250 | HV8180A | 250 | 8 | 203.2 | 0.180 | 4.6 | 80 | 36.3 |
| HC10076A | 500 | HS10076A | 500 | HV10076A | 500 | 10 | 254.0 | 0.076 | 1.9 | 20 | 9.1 |
| — | — | HS10120A | 500 | HV10120A | 500 | 10 | 254.0 | 0.120 | 3.0 | 40 | 18.1 |
| HC10180A | 250 | HS10180A | 250 | HV10180A | 250 | 10 | 254.0 | 0.180 | 4.6 | 80 | 36.3 |
| HC12076A | 500 | HS12076A | 500 | HV12076A | 500 | 12 | 304.8 | 0.076 | 1.9 | 20 | 9.1 |
| — | — | HS12120A | 500 | HV12120A | 500 | 12 | 304.8 | 0.120 | 3.0 | 40 | 18.1 |
| HC12180A | 250 | HS12180A | 250 | HV12180A | 250 | 12 | 304.8 | 0.180 | 4.6 | 80 | 36.3 |
| HC15076A | 500 | — | — | HV15076A | 500 | 15 | 381.0 | 0.076 | 1.9 | 20 | 9.1 |
| — | — | HS15120A | 500 | HV15120A | 500 | 15 | 381.0 | 0.120 | 3.0 | 40 | 18.1 |
| — | — | — | — | HV18076A | 500 | 18 | 457.2 | 0.076 | 1.9 | 20 | 9.1 |
| — | — | — | — | HV18120A | 250 | 18 | 457.2 | 0.120 | 3.0 | 40 | 18.1 |
| HC24120A | 250 | — | — | — | — | 24 | 609.6 | 0.120 | 3.0 | 40 | 18.1 |
| — | — | HS24180A | 250 | — | — | 24 | 609.6 | 0.180 | 4.6 | 80 | 36.3 |

HCV, HVSQ and HV90° CV, V90° and V (Square Bar Stock) Style Hooks



HCV Series



HV-90° Series



HVSQ Series

Specifications:

- Material: Cold drawn spring steel

Features:

- The HCV-style hooks are ideal for wider parts or multiple styles of parts with varying thicknesses
- The HVSQ-style hooks are designed for heavy products and manufactured out of square bar stock
- The HV90°-style hooks are used for maximum load bearing and repeated usage

| HCV Style | | HV-90 Style | | HVSQ Style | | Length | | Wire Size | | Holding Capacity (Approx) | |
|-----------|---------------|-------------|---------------|------------|---------------|--------|-------|-----------|-----|---------------------------|-------|
| Item No. | Bulk Pack Qty | Item No. | Bulk Pack Qty | Item No. | Bulk Pack Qty | in | mm | in | mm | Lbs | kgs |
| HCV4120A | 2000 | HV904120A | 2000 | — | — | 4 | 101.6 | 0.120 | 3.0 | 40 | 18.1 |
| HCV4180A | 500 | HV904180A | 500 | — | — | 4 | 101.6 | 0.180 | 4.6 | 80 | 36.3 |
| — | — | — | — | HVSQ4250A | 250 | 4 | 101.6 | 0.250 | 6.4 | 220 | 100.0 |
| HCV6076A | 1000 | — | — | — | — | 6 | 152.4 | 0.076 | 1.9 | 20 | 9.1 |
| HCV6120A | 1000 | HV906120A | 1000 | — | — | 6 | 152.4 | 0.120 | 3.0 | 40 | 18.1 |
| HCV6180A | 500 | HV906180A | 500 | — | — | 6 | 152.4 | 0.120 | 3.0 | 40 | 18.1 |
| HCV8180A | 250 | HV908180A | 250 | — | — | 8 | 203.2 | 0.180 | 4.6 | 80 | 36.3 |
| — | — | — | — | HVSQ8250A | 250 | 8 | 203.2 | 0.250 | 6.4 | 220 | 100.0 |
| HCV10120A | 1000 | HV9010120A | 500 | — | — | 10 | 254.0 | 0.120 | 3.0 | 40 | 18.1 |
| HCV10180A | 500 | HV9010180A | 500 | — | — | 10 | 254.0 | 0.180 | 4.6 | 80 | 36.3 |
| HCV12076A | 500 | — | — | — | — | 12 | 304.8 | 0.076 | 1.9 | 20 | 9.1 |
| HCV12120A | 500 | HV9012120A | 500 | — | — | 12 | 304.8 | 0.120 | 3.0 | 40 | 18.1 |
| HCV12180A | 500 | HV9012180A | 250 | — | — | 12 | 304.8 | 0.180 | 4.6 | 80 | 36.3 |
| HCV15076A | 500 | — | — | — | — | 15 | 381.0 | 0.076 | 1.9 | 20 | 9.1 |
| HCV15120A | 500 | HV9015120A | 500 | — | — | 15 | 381.0 | 0.120 | 3.0 | 40 | 18.1 |
| — | — | — | — | HVSQ16250A | 125 | 16 | 406.4 | 0.250 | 6.4 | 220 | 100.0 |
| — | — | HV9018120A | 250 | — | — | 18 | 457.2 | 0.120 | 3.0 | 40 | 18.1 |
| HCV18180A | 250 | — | — | — | — | 18 | 457.2 | 0.180 | 4.6 | 80 | 36.3 |
| — | — | — | — | HVSQ24250A | 125 | 24 | 609.6 | 0.250 | 6.4 | 220 | 100.0 |

MASKING MATERIAL OPTIONS

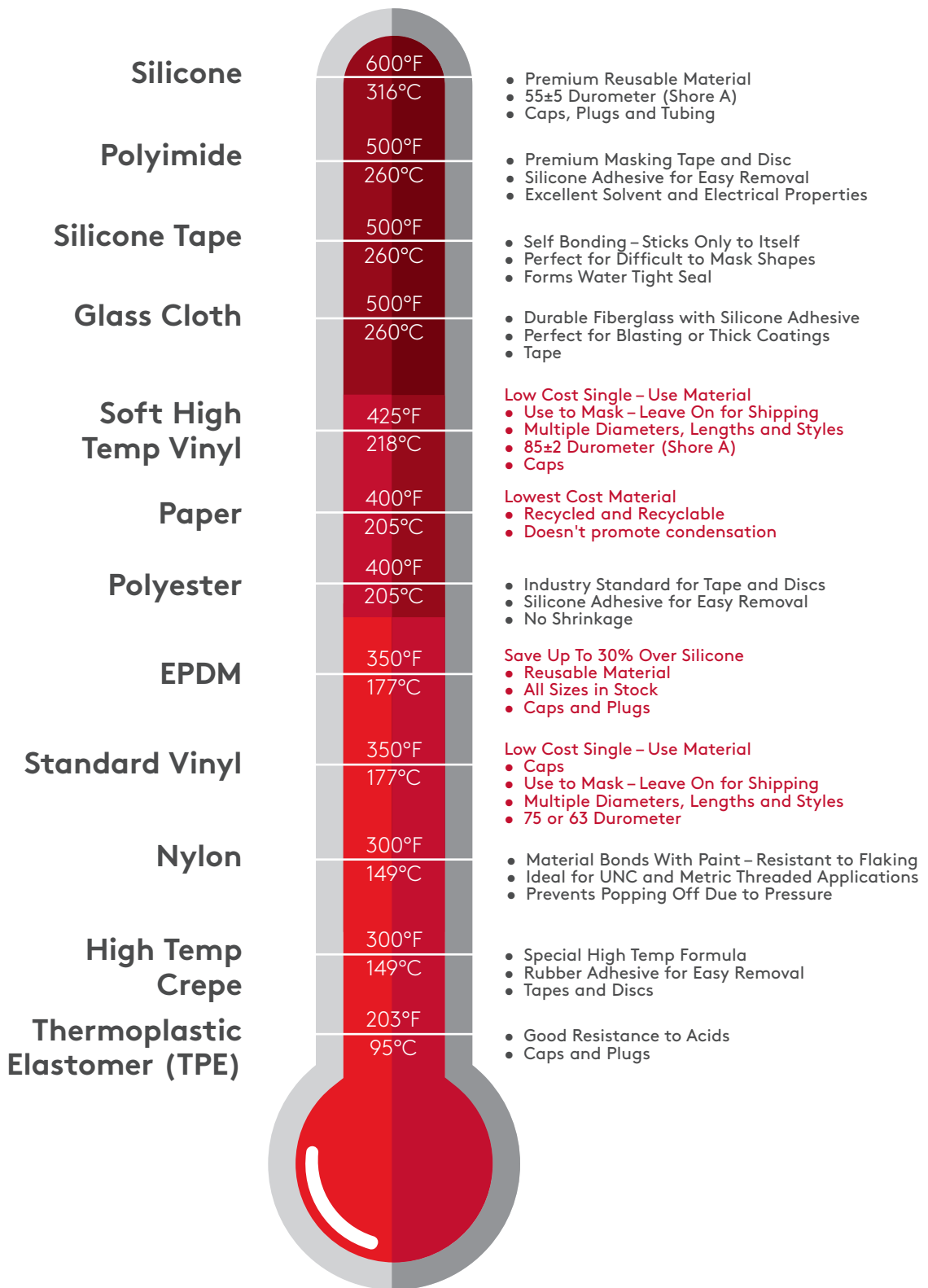


Chart is a guide for typical applications for masking products. Due to the number of variables in each process, some products may not work for the application shown above, we recommend sampling to ensure. Material data contained in this chart is for reference only. Essentra Components reserves the right to change this information at any time without notification. Please consult factory for more information.

*Silicone and EPDM products can be used above rated temp in some applications.

Material Selection by Process

Chart is a guide for typical applications for masking products. Due to the number of variables in each process, some products may not work for the application shown, we recommend sampling to ensure.

*Silicone and EPDM products can be used above rated temp in some applications.

| Material | Powder Coating | E-Coating | Anodizing | Plating | Wet Paint | Blasting | PC Boards |
|-----------------|----------------|-----------|-----------|---------|-----------|----------|-----------|
| Silicone* | X | X | X | X | X | X | |
| Polyimide | X | X | X | X | X | | X |
| Silicone Tape | X | X | X | X | X | | |
| Glass Cloth | X | X | | | X | X | |
| EPDM* | X | X | X | X | X | X | |
| High Temp Vinyl | X | X | X | X | X | | |
| Paper | X | | | | X | | |
| Polyester | X | X | X | X | X | | |
| High Temp Crepe | X | | | | X | | |

Caps for Threaded and Unthreaded Studs



Silicone and EPDM End Caps
Page 4



High Temp Vinyl End Caps
Pages 5 - 6



High Temp Vinyl Pull Caps
Page 7



Silicone Tubing
Page 10

| Your Application | | | | | | | |
|----------------------|-------------|--------|------------------------------------|--------------------------------|-------------------------------------------|--------------------------------------------|----------------------------------|
| Unthreaded Stud (in) | Thread Size | | Silicone End Caps 600°F (315°C) | EPDM End Caps 425°F (218°C) | High Temp Vinyl End Caps 425°F (218°C) | High Temp Vinyl Pull Caps 425°F (218°C) | Silicone Tubing 600°F (315°C) |
| | UNC | Metric | | | | | |
| — | 2 - 56 | M2 | SC007010A | SC007010B | — | — | — |
| 3/32 | 3 - 48 | — | SC009307A | SC009307B | DM0093-1/2B | — | — |
| — | 4 - 40 | — | SC010010A | SC010010C | — | — | STFL011020A |
| — | 5 - 40 | M3 | SC010907A | SC010907C | DM0110-1/2 | — | STFL011020A |
| 1/8 | 6 - 32 | — | SC012510A | SC012510C | DM0125-1/2D | — | STFL011020A |
| — | — | M4 | SC014810A | SC014810C | DM0148-1/2B | — | STFL011020A |
| 5/32 | 8 - 32 | M4 | SC015610A | SC015610C | DM0156-1/2E | — | STFL011020A |
| — | 10 - 24 | — | SC017210A | SC017210B | DM0172-1/2D | — | STFL011020A |
| 3/16 | 12 - 24 | M5 | SC018710A | SC018710B | DM0187-1/2C | DMPC0180-1/2B | STFL0108028A |
| — | — | — | SC022310A | SC022310B | DM0224-1/2B | — | STFL0108028A |
| — | 1/4 | M6 | SC023410A | SC023410C | DM0234-1/2D | — | STFL0108028A |
| 1/4 | — | — | SC025010A | SC025010C | DM0250-1D | DMPC0240-1C | STFL0108028A |
| 9/32 | 5/16 | — | SC028110A | SC028110B | DM0281-1C | — | STFL025037A |
| — | — | M8 | SC029510A | SC029510B | DM0304-1C | — | STFL025037A |
| 5/16 | — | — | SC031210A | SC031210C | DM0313-1F | DMPC0302-1D | STFL025037A |
| — | 3/8 | — | SC035515A | SC035515B | DM0360-1/2C | — | STFL033045A |
| 3/8 | — | M10 | SC037510A | SC037510B | DM0375-1/2C | DMPC0365-1G | STFL033045A |
| 13/32 | 7/16 | — | SC040610A | SC040610B | DM0406-1E | DMPC0396-1D | STFL042055A |
| 7/16 | — | — | SC043710A | SC043710B | DM0437-1/2J | DMPC0427-1G | STFL042055A |
| — | — | M12 | SC045615A | SC045615B | DM0460-1/2B | — | STFL042055A |
| — | 1/2 | — | SC048015A | SC048015B | DM0490-1B | — | STFL042055A |
| 1/2 | — | — | SC050015A | SC050015C | DM0500-1D | DMPC0490-1F | STFL042055A |
| — | 9/16 | M14 | SC053515A | SC053515B | DM0531-1C | — | STFL042055A |
| 9/16 | — | M15 | SC056215A | SC056215B | DM0562-1D | DMPC0552-1C | STFL050062A |
| — | 5/8 | — | SC060015A | SC060015C | DM0600-1B | — | STFL050062A |
| 5/8 | — | M17 | SC062515A | SC062515B | DM0625-1F | DMPC0625-1E | STFL050062A |
| 11/16 | — | — | SC068715A | SC068715B | DM0687-1D | DMPC0687-1E | STFL062075A |
| — | 3/4 | M19 | SC073015A | SC073015B | DM0750-1F | DMPC0740-1D | STFL062075A |
| 3/4 | — | — | SC075015A | SC075015B | DM0750-1F | DMPC0740-1D | STFL062075A |
| 13/16 | — | — | SC081215A | SC081215B | DM0812-1D | DMPC0812-1C | STFL072087A |
| 7/8 | — | — | SC087515A | SC087515B | DM0875-1D | DMPC0865-1B | STFL072087A |
| 15/16 | — | M24 | SC093715A | SC093715B | DM0937-1J | DMPC0937-1B | STFL085100A |
| — | 1 | — | SC097015A | SC097015B | DM0985-1B | — | STFL085100A |
| 1 | — | M27 | SC100015A | SC100015B | DM1000-1E | DMPC0990-1B | STFL085100A |
| 1 - 1/16 | — | — | SC106215A | SC106215B | DM1062-1D | DMPC1060-1D | STFL085100A |
| 1 - 1/8 | — | M30 | SC112515A | SC112515B | DM1125-1D | DMPC1125-1B | ST1125A |
| 1 - 3/16 | — | — | SC118715A | SC118715B | DM1187-1B | — | — |
| 1 - 1/4 | 1 - 1/4 | M33 | SC125015A | SC125015B | DM1250-1D | DMPC1230-1B | ST1250A |
| 1 - 5/16 | — | — | — | — | DM1312-1B | — | — |
| 1 - 3/8 | — | — | — | — | DM1375-1D | — | ST1375A |
| 1 - 7/16 | — | — | — | — | DM1437-1B | DMPC1437-1B | — |
| 1 - 1/2 | 1 - 1/2 | M39 | SC150017A | SC150017B | DM1500-1C | DMPC1500-1B | ST1500A |
| 1 - 5/8 | — | — | SC162520A | SC162520B | DM1625-1H | DMPC1605-1B | ST1625A |
| 1 - 11/16 | — | — | — | — | DM1687-1B | — | — |
| 1 - 3/4 | 1 - 3/4 | — | SC175020A | SC175020B | DM1750-1D | — | ST1750A |
| 1 - 13/16 | — | — | — | — | DM1812-1B | — | — |
| 1 - 7/8 | — | — | SC187520A | SC187520B | DM1875-1D | — | ST1875A |
| 1 - 15/16 | — | — | — | — | DM1937-1B | — | — |
| 2 | 2 | — | SC200020A | SC200020B | DM2000-1B | — | ST2000A |

APPLICATION WIZARDS

Masking Plug Selection Guide for Unthreaded ID's



Silicone and EPDM
Tapered Plugs
Page 11



Silicone and EPDM
Flangeless Plugs
Page 12



Silicone and EPDM
Cone Plugs
Page 15

| Your Application | | | Silicone Tapered Plug 600°F (315°C) | EPDM Tapered Plug 425°F (218°C) | Silicone Flangeless Plug 600°F (315°C) | EPDM Flangeless Plug 425°F (218°C) | Silicone Cone Plugs 600°F (315°C) | EPDM Cone Plugs 425°F (218°C) |
|------------------|---------|-------|-------------------------------------------|---------------------------------------|----------------------------------------------|------------------------------------------|-----------------------------------------|-------------------------------------|
| Inches | Decimal | mm | | | | | | |
| 1/8 | 0.125 | 3.17 | STP004019-11A | STP004019-11B | — | — | SCON250130A | SCON250130B |
| 3/16 | 0.187 | 4.75 | STP004019-11A | STP004019-11B | SFP157236A | SFP157236B | SCON250130A | SCON250130B |
| 1/4 | 0.250 | 6.35 | STP018034A | STP018034D | SFP236315A | SFP236315D | SCON250130A | SCON250130B |
| 5/16 | 0.312 | 7.92 | STP018034A | STP018034D | SFP236315A | SFP236315D | SCON316216A | SCON316216B |
| 3/8 | 0.375 | 9.53 | STP025043A | STP025043C | SFP315394A | SFP315394C | SCON394197A | SCON394197B |
| 7/16 | 0.437 | 11.10 | STP035047A | STP025043C | SFP394472A | SFP394472C | SCON551315A | SCON551315C |
| 1/2 | 0.500 | 12.70 | STP039059A | STP039059B | SFP472551A | SFP472551B | SCON551315A | SCON551315C |
| 9/16 | 0.562 | 14.27 | STP039059A | STP039059B | SFP551630A | SFP551630C | SCON689453A | SCON689453C |
| 5/8 | 0.625 | 15.88 | STP051067A | STP051067E | SFP415641A | SFP415641B | SCON689453A | SCON689453C |
| 11/16 | 0.687 | 17.45 | STP055075A | STP055075D | SFP630709A | SFP630709C | SCON689453A | SCON689453C |
| 3/4 | 0.750 | 19.05 | STP062078A | STP062078D | SFP709787A | SFP709787C | SCON767532A | SCON767532B |
| 13/16 | 0.812 | 20.62 | STP071094A | STP071094C | SFP787886A | SFP787886B | SCON819583A | SCON819583C |
| 7/8 | 0.875 | 22.23 | STP071094A | STP071094C | SFP787886A | SFP787886B | — | — |
| 15/16 | 0.937 | 23.80 | STP075094A | STP075094C | SFP886945A | SFP886945C | — | — |
| 1 | 1.000 | 25.40 | STP090106A | STP090106C | SFP9541024A | SFP9541024B | — | — |
| 1-1/16 | 1.062 | 26.97 | STP094110A | STP094110C | SFP8681094A | SFP8681094B | — | — |
| 1-1/8 | 1.125 | 28.58 | STP102126A | STP102126B | SFP10001125A | SFP10001125B | — | — |
| 1-3/16 | 1.187 | 30.15 | STP102126A | STP102126B | SFP11251250A | SFP11251250B | — | — |
| 1-1/4 | 1.250 | 31.75 | STP106134A | STP106134B | SFP10941320A | SFP10941320B | — | — |
| 1-5/16 | 1.312 | 33.32 | STP106134A | STP106134B | SFP10941320A | SFP10941320B | — | — |
| 1-3/8 | 1.375 | 34.93 | STP118145A | H STP118145B | H SFP13201547A | H SFP13201547B | — | — |
| 1-7/16 | 1.437 | 36.50 | STP118145A | H STP118145B | H SFP13201547A | H SFP13201547B | — | — |
| 1-1/2 | 1.500 | 38.10 | STP122153A | H STP122153B | H SFP13201547A | H SFP13201547B | — | — |
| 1-9/16 | 1.562 | 39.67 | STP130161A | H STP130161B | H SFP15471774A | H SFP15471774B | — | — |
| 1-5/8 | 1.625 | 41.28 | STP141169A | H STP141169C | H SFP15471774A | H SFP15471774B | — | — |
| 1-11/16 | 1.687 | 42.85 | STP145177A | H STP145177C | H SFP15471774A | H SFP15471774B | — | — |
| 1-3/4 | 1.750 | 44.45 | STP149181A | H STP149181C | H SFP15471774A | H SFP15471774B | — | — |
| 1-13/16 | 1.812 | 46.02 | STP165196A | H STP165196B | H SFP15471774A | H SFP15471774B | — | — |
| 1-7/8 | 1.875 | 47.63 | STP165196A | H STP165196B | H SFP17742000A | H SFP17742000B | — | — |
| 1-15/16 | 1.937 | 49.20 | STP177208A | H STP177208B | H SFP17742000A | H SFP17742000B | — | — |
| 2 | 2.000 | 50.80 | STP177208A | H STP177208B | H SFP17742000A | H SFP17742000B | — | — |
| 2-1/4 | 2.250 | 57.15 | STP196248A | H STP196248B | — | — | — | — |
| 2-1/2 | 2.500 | 63.50 | STP228267A | H STP228267B | — | — | — | — |

Note: H Denotes that Hollow (cost saving) version of plug is available. See the HSTP Series on page 73.

Masking Plug Selection Guide for Threaded Holes



Silicone and EPDM
Plug with 1st
Thread Protection
Page 16



Silicone and EPDM
Flangeless Plug
Page 12



Silicone and EPDM
Tapered Plugs
Page 11

| Your Application | | Plug with 1st Thread Protection | | Flangeless Plug | | Tapered Plugs | |
|------------------|--------|---------------------------------|-----------------------|---------------------------|-----------------------|---------------------------|-----------------------|
| UNC | Metric | Silicone 600°F (315°C) | EPDM 425°F (218°C) | Silicone 600°F (315°C) | EPDM 425°F (218°C) | Silicone 600°F (315°C) | EPDM 425°F (218°C) |
| 2 - 56 | M2 | — | — | — | — | STP003012A | STP003012B |
| 8 - 32 | — | — | — | — | — | STP006018-07A | STP006018-07C |
| 10 - 24 | M4 | — | — | SFP157236A | SFP157236B | STP006020A | STP006020D |
| 12 - 24 | — | — | — | SFP157236A | SFP157236B | STP012025A | STP012025D |
| — | M6 | SPFTM6A | SPFTM6B | SFP236315A | SFP236315D | STP012025-10A | STP012025-10C |
| 1/4 - 20 | — | SPFT1/4A | SPFT1/4B | SFP236315A | SFP236315D | STP012025-10A | STP012025-10C |
| 5/16 - 18 | — | SPFT5/16A | SPFT5/16B | SFP236315A | SFP236315D | STP012037-12A | STP012037-12B |
| — | M8 | SPFTM8A | SPFTM8B | SFP315394A | SFP315394C | STP018034-10A | STP018034-10C |
| 3/8 - 16 | — | SPFT3/8A | SPFT3/8B | SFP315394A | SFP315394C | STP025037A | STP025037D |
| — | M10 | SPFTM10A | SPFTM10B | SFP394472A | SFP394472C | STP025037A | STP025037D |
| 7/16 - 14 | — | SPFT7/16A | SPFT7/16B | SFP394472A | SFP394472C | STP025043A | STP025043C |
| — | M12 | SPFTM12A | SPFTM12B | SFP472551A | SFP472551B | STP031050A | STP031050C |
| 1/2 - 13 | — | SPFT1/2A | SPFT1/2B | SFP472551A | SFP472551B | STP035047A | STP035047B |
| 9/16 - 12 | — | — | — | — | — | STP039059A | STP039059B |
| 5/8 - 11 | — | — | — | SFP551630A | SFP551630C | STP043062A | STP043062D |
| — | M16 | SPFTM16A | SPFTM16B | SFP630709A | SFP630709C | STP043062A | STP043062D |
| 3/4 - 10 | — | — | — | SFP709787A | SFP709787C | STP055075A | STP055075D |
| — | M20 | SPFTM20A | SPFTM20B | SFP787886A | SFP787886B | STP062078A | STP062078D |
| 7/8 - 9 | — | — | — | SFP787886A | SFP787886B | STP062094A | STP062094B |
| 1 - 8 | — | — | — | SFP9541024A | SFP9541024B | STP078102A | STP078102B |
| 1 - 1/8 - 7 | — | — | — | SFP11251250A | SFP11251250B | STP109118A | STP109118B |



ESSENTRA COMPONENTS LOCATIONS TO SERVE YOU

UNITED STATES OF AMERICA essentracomponents.com/en-us

Westchester, Illinois

+1 800-847-0486
sales@essentracomponents.com

Erie, Pennsylvania

+1 814-899-9263
saleserie@essentracomponents.com

Flippin, Arkansas

+1 800-847-0486
sales@essentracomponents.com

Houston, Texas

+1 281-890-3535
saleshouston@essentracomponents.com

Louisville, Kentucky

+1 727-245-0303
sales@essentracomponents.com

CANADA essentracomponents.com/en-ca

Burlington, Ontario

+1 905-825-0134
salestoronto@essentracomponents.com

Nisku, Alberta

+1 780-612-9911
salesedmonton@essentracomponents.com

BRAZIL essentracomponents.com.br

Jaguariúna, SP, Brasil

+55 19-3847-8888
salesbr@essentracomponents.com

MEXICO essentracomponents.mx

Apodaca, Nuevo Leon Mexico
(52) 81 8000-3760



MORE CHOICE



FREE SAMPLES



SHIPS TODAY

800-847-0486

sales@essentracomponents.com

www.essentracomponents.com



MASK-0124-AMERS

Mouser Electronics

Authorized Distributor

Click to View Pricing, Inventory, Delivery & Lifecycle Information:

Essentra:

[20546588](#) [20546571](#) [20546922](#) [20547073](#) [20547097](#) [20546977](#) [20547042](#) [20546908](#) [20546618](#) [20546632](#)
[20546724](#) [20546731](#) [20546755](#) [20546649](#) [20546816](#) [20546656](#) [20546830](#) [20546984](#) [20546595](#) [20546892](#)
[20546915](#) [20546717](#) [20547035](#) [20546762](#) [20547066](#) [20547080](#) [20546670](#) [20546823](#) [20546991](#) [20546625](#)
[20546694](#) [20547059](#) [20547127](#) [20546663](#) [20546847](#) [20546854](#) [20546960](#) [20546861](#) [20546885](#) [20546779](#)
[20546793](#) [20547110](#) [20546809](#) [20546878](#) [20546946](#) [20547011](#) [20546700](#) [20546953](#) [20547028](#) [20546601](#)
[20546786](#) [20547103](#) [20546748](#) [20546939](#) [20546687](#) [20547004](#)