



1H Series

High Current Sealed Toggle Switch



1H
Toggle Switches



SPECIFICATIONS

CONTACT RATING: 12 Amps @125/250 VAC.

MECHANICAL LIFE: 30,000 make-and-break cycles.

CONTACT RESISTANCE: 20 mΩ max. (initial value) @ 2-4VDC
100mA for both silver and gold plated contacts.

INSULATION RESISTANCE: 1,000 MΩ min./500VDC

DIELECTRIC STRENGTH: 1,500 Vrms min.@sea level.(initial value)

OPERATING TEMPERATURE: -30°C to 85°C.

MATERIALS

CASE: Diallyl phthalate (NYLON) (UL94v-0)

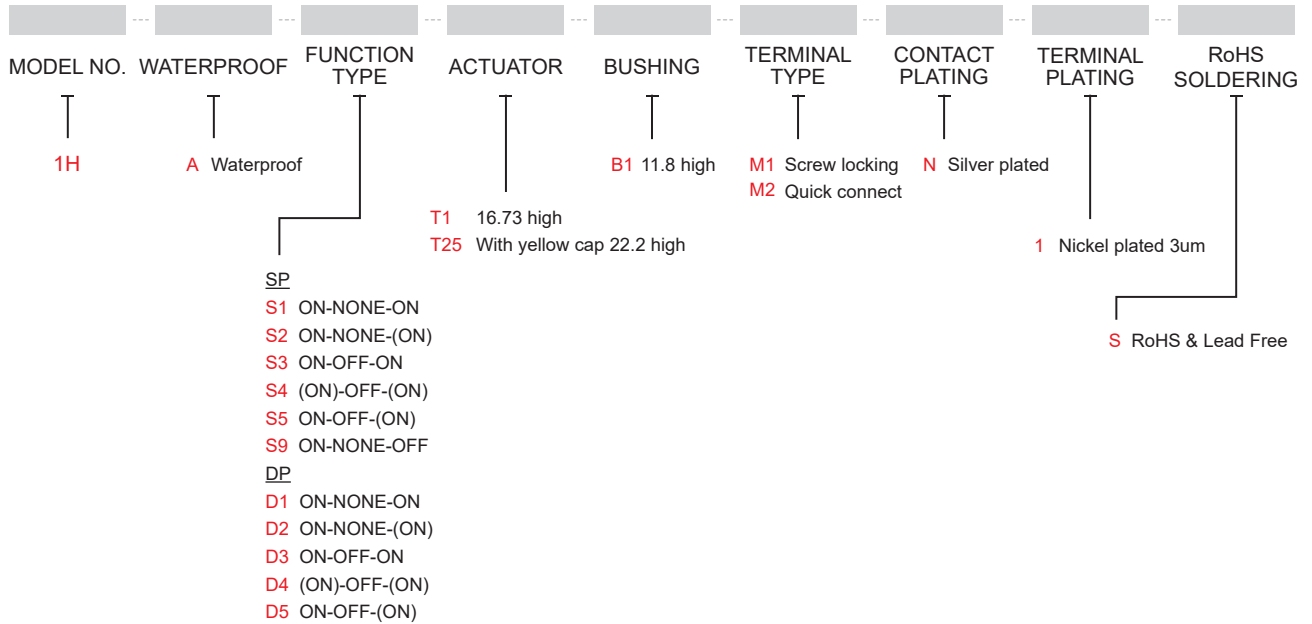
ACTUATOR: Brass, chrome plated.

BUSHING: Zin+Silicon.

CONTACT: Copper, Silver plated.

TERMINAL: Copper, Nickel plated.

HOW TO ORDER



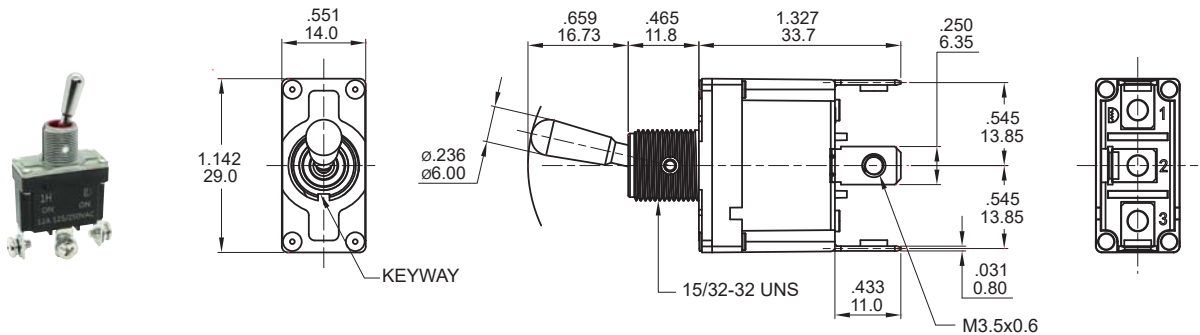
EXAMPLE: 1HAS1T1B1M1N1S

▼ SWITCH FUNCTION

NO. POLES	TYPE	SWITCH FUNCTION			CONNECTED TERMINALS / SCHEMATIC		
		POS.1	POS.2	POS.3	POS.1	POS.2	POS.3
SP	S1	ON	NONE	ON		N/A	
	S2	ON	NONE	(ON)			
	S3	ON	OFF	ON			
	S4	(ON)	OFF	(ON)			
	S5	ON	OFF	(ON)			
	S9	ON	NONE	OFF			
DP	D1	ON	NONE	ON		N/A	
	D2	ON	NONE	(ON)			
	D3	ON	OFF	ON			
	D4	(ON)	OFF	(ON)			
	D5	ON	OFF	(ON)			

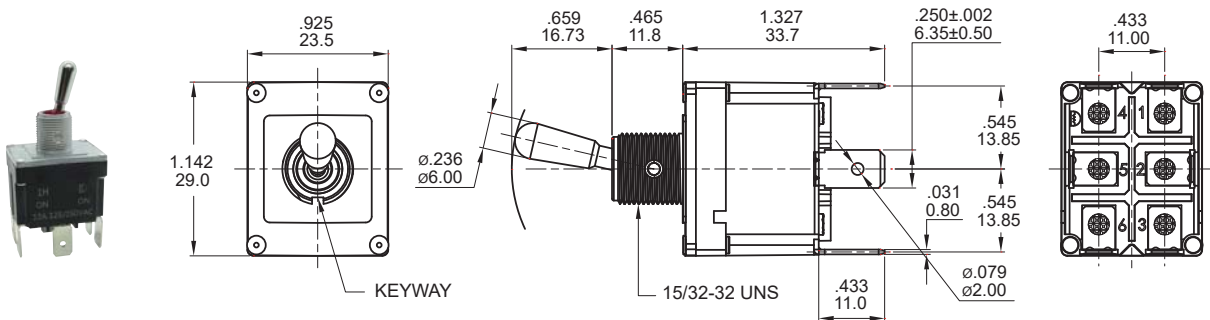
()=MOMENTARY

▼ POLE OPTIONS



SPDT

Model name. 1HAS1T1B1M1N1S



DPDT

Model name. 1HAD1T1B1M2N1S



1H Series

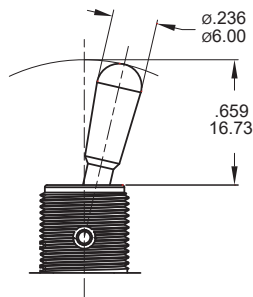
High Current Sealed Toggle Switch



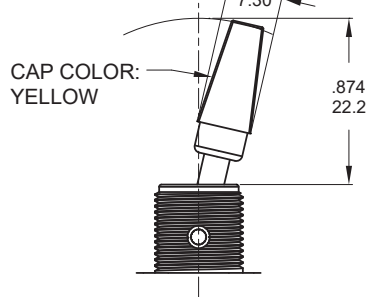
1H
Toggle Switches

▼ ACTUATOR & BUSHING OPTIONS

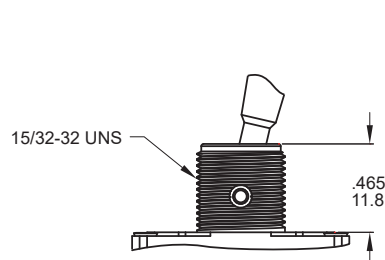
T1 STD



T25

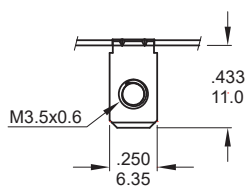


B1 STD



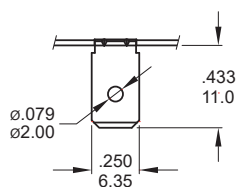
▼ TERMINAL OPTIONS & PANEL MOUNTING

M1 Screw locking



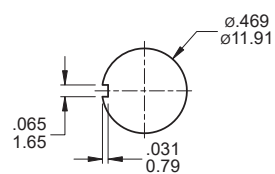
.031inch(0.80mm) THK.

M2 Quick connect

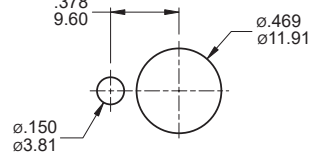


.031inch(0.80mm) THK.

15/32 IN BUSHING



Without locking ring (Keyway)



With standard locking ring.

▼ HARDWARE

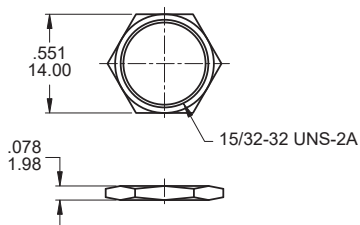
EXAMPLE: -
 Model name. 5 Standard hardware

* Standard : 2 nut, 1 locking ring, 1 lockwasher

* For further information please consult sales representative.

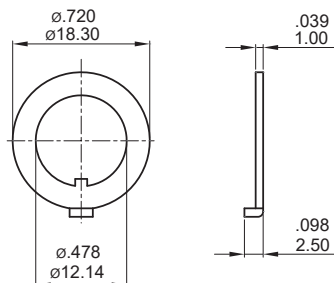
15/32 NUT (Std.)

Model name. MNU1M07



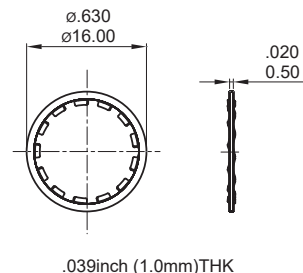
LOCKING RING (Std.)

Model name. NV-MNU-1M08-ZB



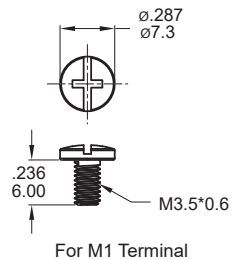
LOCKWASHER (Std.)

Model name. MNU-1M74



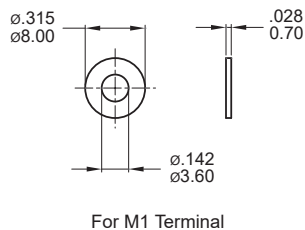
M3.5 SCREW (Std.)

Model name. MNU-1H02



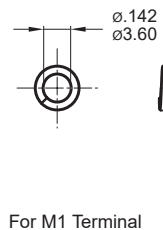
WASHER (Std.)

Model name. MNU-1H01



SPRING WASHER (Std.)

Model name. MNU-1H05



▼ SOLDERING PROCESS

MANUAL SOLDERING: Use 30 watts soldering iron and controlled the temperature at 350°.

Duration of solder immersion: Max. 5 sec.

WAVE SOLDERING: Recommend soldering temperature: 260 ± 5°C

Duration of solder immersion: Max. 5 sec. (PCB thickness is 1.6mm)

Mouser Electronics

Authorized Distributor

Click to View Pricing, Inventory, Delivery & Lifecycle Information:

Dailywell:

[1HAD1T1B1M1N1S](#) [1HAD2T1B1M1N1S](#) [1HAD3T1B1M1N1S](#) [1HAD4T1B1M1N1S](#) [1HAS1T1B1M1N1S](#)
[1HAS2T1B1M1N1S](#) [1HAS3T1B1M1N1S](#) [1HAS4T1B1M1N1S](#)