



SPECIFICATIONS

RATING: 2A 24VDC

ELECTRICAL LIFE: Min. 10,000 cycles.

MECHANICAL LIFE: 1,000,000 cycles.

INSULATION RESISTANC: 100 MΩ Min. at 500VDC.

DIELECTRIC STRENGTH: 500Vrms @ sea level. (initial value)

CONTACT RESISTANC: 100 mΩ Max. @ 1A/12VDC (initial value)

Note: When the switches with the wire assembly, we only test the electric conduction and will not test the contact resistance on the wire.

OPERATING TEMPERATURE RANGE: -20°C ~ 65°C

TRAVEL: 1.5(.059inch)±0.3 mm

OPERATION PRESSUR: 7N±2N.

INGRESS PROTECTION: IP67(In house test)

TORQUE: 0.5 to 1 Nm max.

Materials

CASE & BUSHING: Nylon 6/6

CAP: Polyurethane

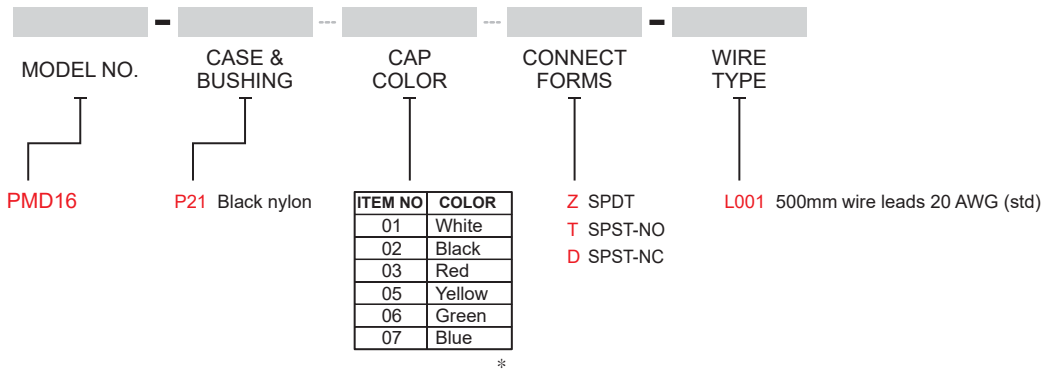
BUTTON: Stainless steel

ACTUATOR: POM

NUT: SPCC(Nickel Plated)

O-RING: Silicone(Translucent)

HOW TO ORDER



* For other colors information please consult sales representative.

EXAMPLE:
PMD16-P21□□-L001 (STD)
└─ Connect forms
└─ Cap Color



▼ SWITCH FUNCTION

NO. POLES	MODEL NO.	SWITCH FUNCTION		CONNECTED TERMINALS / SCHEMATIC					
		POS.1	POS.2	POS.1			POS.2		
				OPEN			COLSE		
SP	PMD16	OFF	(ON)	 Com No Nc	 Com No	 Com Nc	 Com No Nc	 Com No	 Com Nc

() =MOMENTARY

▼ POLE OPTIONS

SPDT

Wires: UL 3385,20 AWG
Black wire - Com
Blue wire - No
Green wire - Nc

Model name. PMD16-P2105Z-L001

SPST-NO

Wires: UL 3385,20 AWG
Black wire - Com
Black wire - No

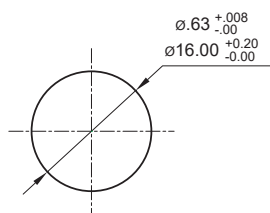
Model name. PMD16-P2107T-L001

SPST-NC

Wires: UL 3385,20 AWG
Black wire - Com
Black wire - Nc

Model name. PMD16-P2103D-L001

▼ PANEL MOUNTING & HARDWARE



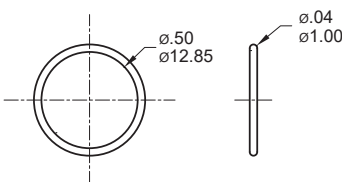
Panel thickness: .276inch(7mm) max.

* Standard hardware : 1 nut, 1 O-ring

* For further information please consult sales representative.

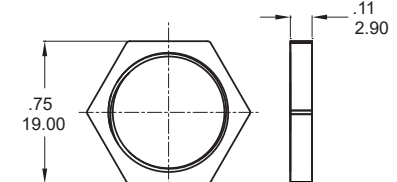
O-RING (Std.)

Model name. FCP-MP602



NUT (Std.)

Model name. MNU-MP601



Mouser Electronics

Authorized Distributor

Click to View Pricing, Inventory, Delivery & Lifecycle Information:

[Dailywell:](#)

[PMD16-P2102T-L001](#) [PMD16-P2105D-L001](#) [PMD16-P2106Z-L001](#) [PMD16-P2107T-L001](#) [PMD16-P2103D-L001](#)
[PMD16-P2106D-L001](#)