

DIMENSIONS IN INCHES (MILLIMETERS)
DO NOT SCALE DRAWING

Dwg. No.

CWR-170-XX-0203

NOTES:

1. Dimensions are in inches; dimensions in () are in millimeters.
2. Metric equivalents given for general information only, and are based upon 1.00 inches = (25.4) millimeters.
3. Unless otherwise specified, tolerances are ± 0.005 (.13) for three place decimals, and ± 0.01 (.3) for two place decimals.

MATERIALS:

PLASTIC PARTS - UL94V-0 thermoplastic (blue, standard) flame retardant.

CONTACTS - Phosphor bronze.

CONTACT PLATING- .000100 Tin over .000050Ni.

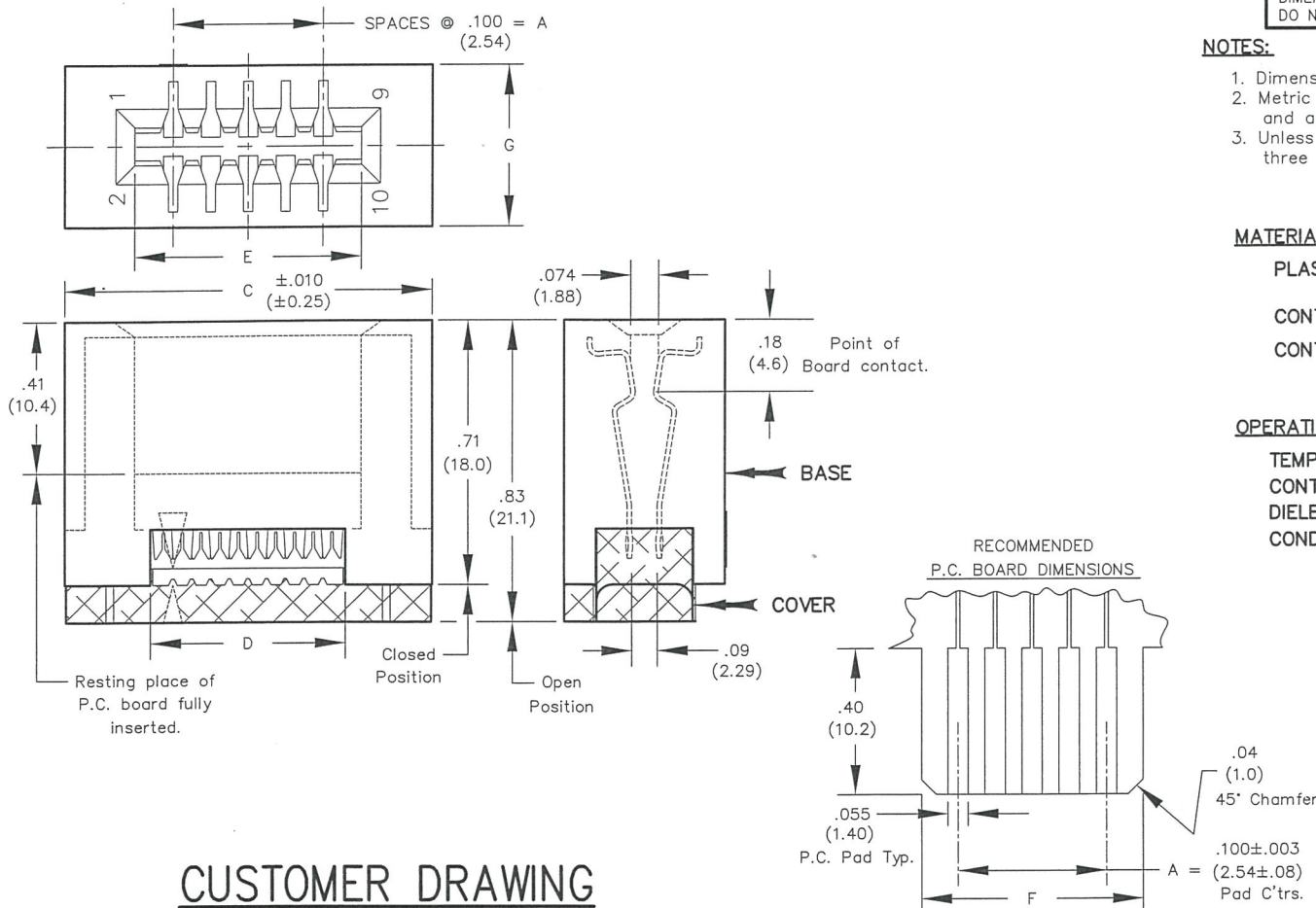
OPERATING STANDARDS:

TEMPERATURE RATING - 125° C

CONTACT RATING - 1 ampere.

DIELECTRIC STRENGTH - Over 500 V.D.C. at sea level.

CONDUCTORS ACCEPTED - 28-30 AWG solid or stranded.



CUSTOMER DRAWING

NO. CONTS.	CONNECTOR DIMENSIONS					
	A	C	D	E	F	G
10	.400 (10.16)	.976 (24.79)	.520 (13.21)	.604 (15.34)	.596 (15.14)	.43 (10.9)
20	.900 (22.86)	1.476 (37.49)	1.020 (25.91)	1.104 (28.04)	1.096 (27.84)	.43 (10.9)
26	1.200 (30.48)	1.776 (45.11)	1.320 (33.53)	1.404 (35.66)	1.396 (35.46)	.43 (10.9)
34	1.600 (40.64)	2.176 (55.27)	1.720 (43.69)	1.804 (45.82)	1.796 (45.62)	.43 (10.9)
40	1.900 (48.26)	2.476 (62.89)	2.020 (51.31)	2.104 (53.44)	2.096 (53.24)	.43 (10.9)
50	2.400 (60.96)	2.976 (75.59)	2.520 (64.01)	2.604 (66.14)	2.596 (65.94)	.44 (11.2)

FORM-B4
REVISIONS
0
RELEASED
DGW 7-27-2006
AUG 22 2006

ATTENTION
THIS DRAWING AND ITS ATTACHMENTS, IF ANY, ARE PROPRIETARY TO CW INDUSTRIES AND DESCRIBE DESIGNS THAT ARE CONFIDENTIAL AND MUST NOT BE DISCLOSED UNLESS AUTHORIZED, IN WRITING, BY AN OFFICER OF CW INDUSTRIES.....

CW INDUSTRIES
Southampton, Pa. 18966
TOLERANCES UNLESS OTHERWISE SPECIFIED
2 Place Decimal ± 0.010 METRIC
3 Place Decimal ± 0.005 1 Place Dec. ± 0.25 mm
Angles $\pm 1^\circ$ 2 Place Dec. ± 0.13 mm
Made for: CW IND.
Drawn by: DGW 7-27-2006
Checked by: G. Gold 8-22-06
Approval: [Signature] 8-23-06

Title: CARD EDGE CONNECTOR
for .050 ctrs. rnd. cond. cable
Division: CONNECTOR
Dwg. No. CWR-170-XX-0203

MASTER

Mouser Electronics

Authorized Distributor

Click to View Pricing, Inventory, Delivery & Lifecycle Information:

[CW Industries:](#)

[CWR-170-20-0203](#)