

G80F1C-P04QF00-0000

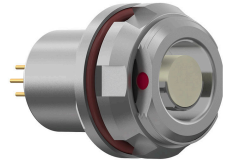
series_f

type_g8



General information

Part number	G80F1C-P04QF00-0000
Termination	pcb
Size	0
Locking principle	break , push
Coding	1_halfshell



Illustrations may differ from original product. Dimensions, unless otherwise specified, in mm.

CODING: 1

POSITIONS: 4 positions

PANEL CUT OUT:

DIMENSIONS:

PCB-LAYOUT:

Borehole 0.6 mm

The pin layout corresponds to the view on the termination area

Contact insert description

Number of contacts	4
Contact type	sockets
Contact diameter	07mm
Insulator material	peek
Termination	pcb
Termination diameter	05mm

reverse_gender_on_request

Technical information

Max. creepage and air clearance distance	11 mm	07 mm
Nominal current single contact	06_a	iec_60512_5_2
Nominal current insert	6 A	vde_0298_4
Test voltage	09_kv_ac	sae_13441

safety_text

Mechanical and environmental data

Degree of protection*	ip68
Operating temperature	40_120_c
Mating cycles	5000

mated_unmated

Material and surface treatments

Housing	m_chrome
Contact	cu_alloy_gold

safety_text_2
ul_text
illustrative_text

Mouser Electronics

Authorized Distributor

Click to View Pricing, Inventory, Delivery & Lifecycle Information:

[ODU:](#)

[G80F1C-P04QF00-0000](#)