

Series A38 / B38

Single Row Terminal Blocks

SPECIFICATIONS

Rating: A38: 30A, 600V

B38: 50A, 300V

Center Spacing: 0.437" (11.10mm)

Wire Range: A38: #10-22 AWG Cu; B38: #8-16 AWG

Screw Size: #8-32 zinc-plated steel

Torque Rating: A38: 9 lb-in; B38: 15 lb-in for #8, 9 lb-in for #6

Base: A38 Only: Standoffs standard for easy flux washing

Distance Between Barriers: 0.378" (9.60mm)

Recommended PCB Hole Diameter (A38): 0.076" (1.93mm)

Operating Temperature: 221°F (105°C)

Molded Material: Black, UL Rated 94V0 Thermoplastic

Breakdown Voltage: 5000V

Agency Information: UL File E62622, CSA File 47235;

CE Certified



A382208



B384904

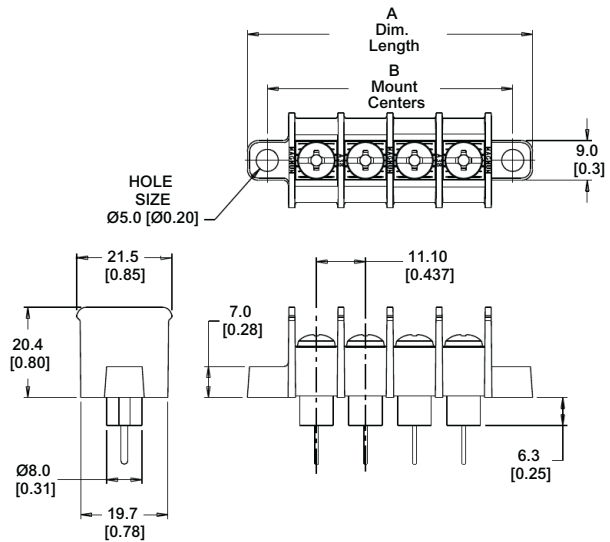
TABLE A

Poles	MOUNTING ENDS ONLY		BARRIER ENDS ONLY
	B Mount Ctrs.	"A" Dim. Length	"A" Dim. Length
02	1.31	1.67	0.93
03	1.75	2.10	1.37
04	2.19	2.54	1.81
05	2.62	2.98	2.25
06	3.06	3.41	2.68
07	3.50	3.85	3.12
08	3.93	4.29	3.56
09	4.37	4.72	3.99
10	4.81	5.16	4.43
11	5.24	5.60	4.87
12	5.68	6.04	5.30
13	6.12	6.47	5.74
14	6.56	6.91	6.18
15	6.99	7.35	6.61
16	7.43	7.78	7.05

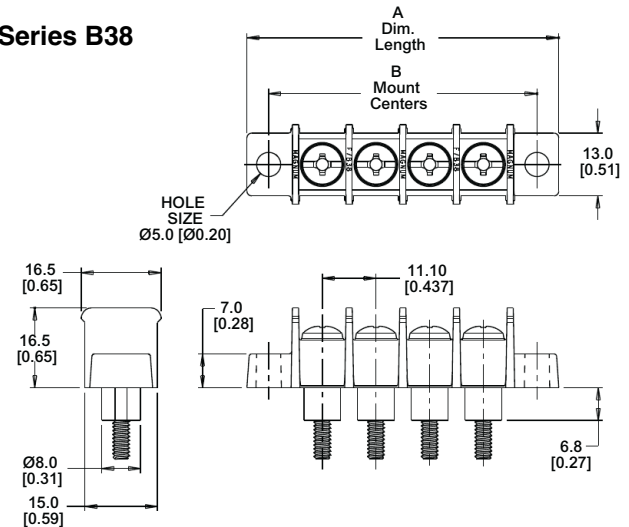
* Dimensions in inches. To convert to millimeters, multiply by 25.4.

Dimensions - mm (in)

Series A38



Series B38



Terminal Blocks:
Single Row

EuroMag Series

Edge Connectors,
One-Sided Boards

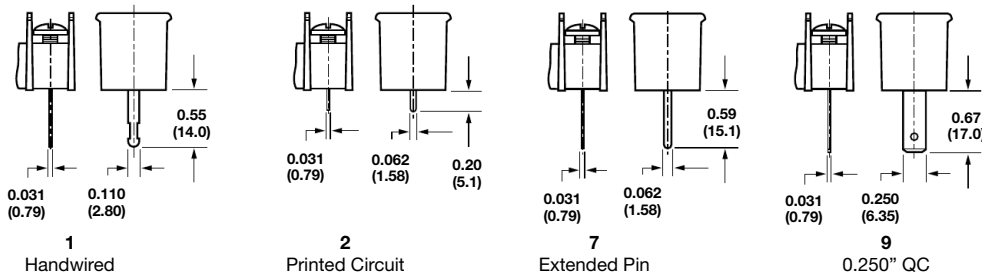
Compliance
References

Part Numbering System

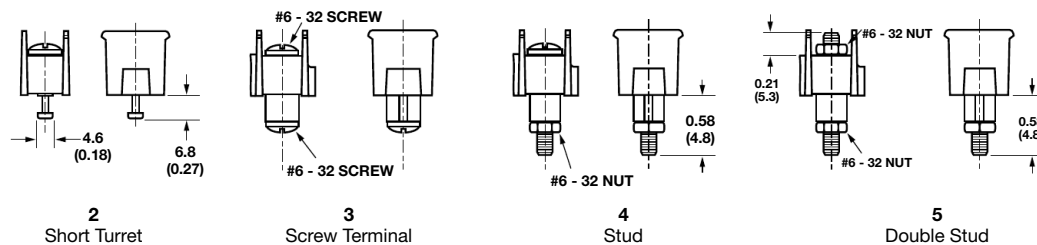
Series	Terminal Style	Base/End	# of Poles	Screw Options	Options
A3B					
	1 - hand wired* 2 - printed circuit 7 - extended wire wrap 9 - 0.250" QC*	1 - flat base, mount end 2 - flat base, barrier end 3 - insulator base** mount end 4 - insulator base** barrier end	02 to 16	Blank - standard screw (steel zinc-plated, philslot BHMS)† 04 - brass, nickel-plated, philslot BHMS† 07 - steel, SEMS zinc-plated philslot screw 94 - brass, nickel-plated slotted BHMS†	L1 to L6 marking options (pg 25) Covers - (pg 26)
		* N/A on barrier end base styles (2 and 4) **N/A on 2 terminal style.		†Binding Head Machine Screw	
B3B					
	2 - short turret 3 - screw terminal #6-32 screw top & bottom) 4 - stud (#8-32 screw top, #6-32 stud bottom) 5* - double stud (#6-32 stud top & bottom)	4 - insulator base, barrier ends 9 - insulator base mount ends	02 to 16	Blank - standard screw steel zinc-plated philslot BHMS)† 34** - #6-32 nickel-plated brass philslot BHMS†	L1 to L6 marking options (pg 25)
	*C360 Copper alloy (bright tin plate)			**Note: 34 screws only. Available with 3 terminal style. †Binding Head Machine Screw	

A38 Terminal Styles Wire ready screws standard

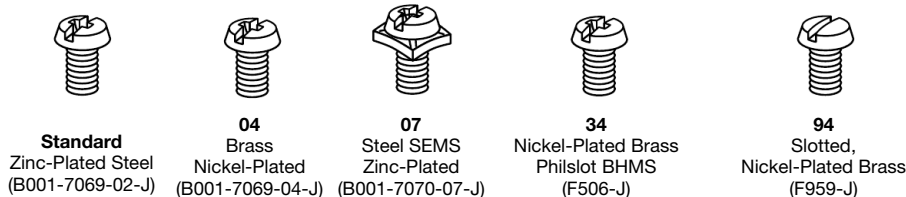
Inches (Millimeters)



B38 Terminal Styles



Screw Options (Bulk ordering part numbers are in parentheses)



Terminal Blocks: Single Row

EuroMag Series

Edge Connectors, One-Sided Boards

Compliance References

Mouser Electronics

Authorized Distributor

Click to View Pricing, Inventory, Delivery & Lifecycle Information:

Eaton:

[A38211204](#) [A38730804](#) [A382203](#) [A38130204](#) [A38730807](#) [A38131204](#) [A381303](#) [B383906](#) [A389303](#) [A389102](#)
[B385915](#) [A389304](#) [B383913](#) [A38131604](#) [A38220404](#) [B38190804](#) [B383916](#) [B381906](#) [B381903](#) [B38190204](#)
[A38120707CA](#) [A38930694](#) [A38710307](#) [A387308](#) [B384903](#) [A38130804](#) [B384906](#) [A389305](#) [B383406](#) [A38930807](#)
[A38110307](#) [A38720807](#) [B384402L5](#) [B38340334RC](#) [B38140894](#) [A382207](#) [B383416](#) [B385902](#) [B38190294](#)
[A38130407](#) [A38130307](#) [A38220607](#) [A38731004](#) [A38221107](#) [B383904](#) [B38391434](#) [A38221207](#) [A382104](#)
[A38111204](#) [B383912](#) [A38220307](#) [A38110804](#) [B38390234](#) [A382204](#) [A389103](#) [B38390632](#) [A389107](#) [B38100404](#)
[A381108](#) [A38130604](#) [B384902](#) [B38190304](#) [A389308](#) [B382007](#) [A38730604](#) [A38220204](#) [A38220604](#) [B384904](#)
[B383903](#) [B38190404](#) [A38721007](#) [B383402](#) [B384408](#) [A38220907](#) [A38710207](#) [B384908](#) [A389306](#) [A389104](#)
[B383905](#) [A38910207](#) [A38930204](#) [A381103](#) [A38211007](#) [B381403](#) [A38910604](#) [A38220804](#) [A38720607](#) [A38131404](#)
[B385904](#) [A38220507](#) [B383910](#) [A38710407](#) [A38930604](#) [B381904](#) [A38930404](#) [B38390334](#) [A38130704](#) [A389307](#)
[B38140600](#) [A38910807](#)