

RFPC-SMA33-FN: RP SMA Bulkhead Jack, With O-ring, Edge Mount Connector, IP68/69K, 6GHz

Material and Plating:

Insulator A: Teflon

Insulator B: Teflon

Body: Brass, Gold Plated

Pin: Phosphor Bronze, Gold Plated

Gasket A: Silicone rubber, Color: Red

Gasket B: Silicone rubber, Color: Red

O-Ring: Silicone rubber, Color: Red

Barrel: Brass, Gold Plated

Washer: Brass, Gold Plated

Nut: Brass, Gold Plated

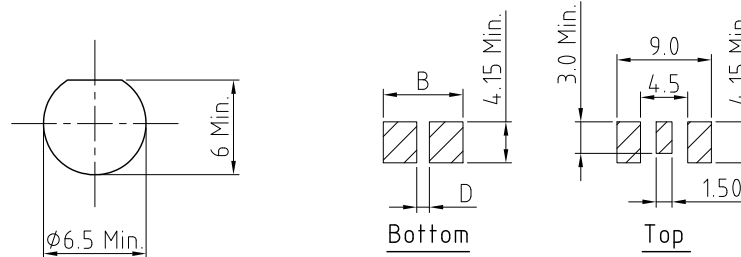
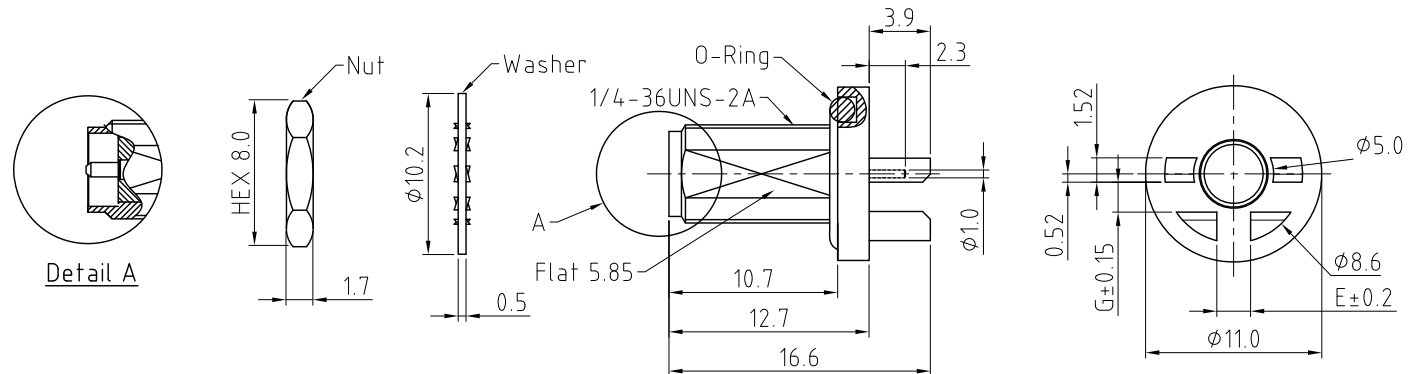
Environmental:

A. Rated to:

- i. IP6x – Dust tight – no particle ingress.
- ii. IPx8 Waterproof for 48 hours at 1 meter underwater.
- iii. IPx9K Water spray, 14–16L per minute, at 8,000 ~ 10,000 kPa, at 100–150mm distance for 30 seconds.

Notes:

1. Working Frequency Range: DC-6GHz.
2. Operating Temperature: -65°C to +165°C.
3. Impedance: 50 Ohm
4. VSWR: 1.5 Max.
5. Recommended PCB Thickness: 0.80mm or 1.6mm.
Other PCB thickness available on request



Dim B	Dim D	Dim E	Dim G	Recommended PCB thickness
8.4	3.7	4.0	0.95	0.80
7.6	1.2	1.55	1.86	1.60

Recommended Mounting Hole

Recommended Foot Print

Tolerance: ± 0.05

HOW TO ORDER

RFPC - SMA33 - FN - XXX - X

DIMENSION G OPTIONS:

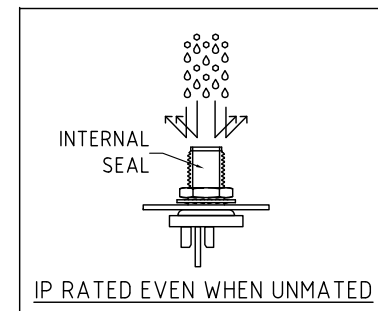
095 = 0.95MM, FOR 0.80MM PCB THICKNESS

186 = 1.86MM, FOR 1.60MM PCB THICKNESS

WASHER AND NUT OPTIONS:

BLANK = SEPARATELY PACKED (STANDARD)

A = ALL ASSEMBLED WITH CONNECTOR



Mouser Electronics

Authorized Distributor

Click to View Pricing, Inventory, Delivery & Lifecycle Information:

[GCT:](#)

[RFPC-SMA33-FN-095-A](#) [RFPC-SMA33-FN-186-A](#)