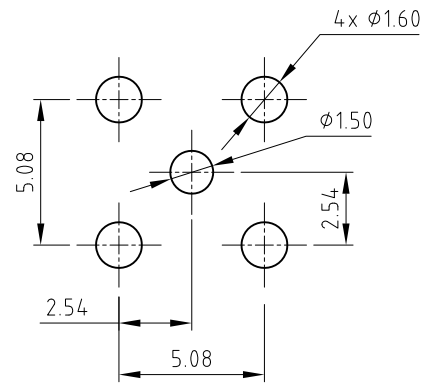
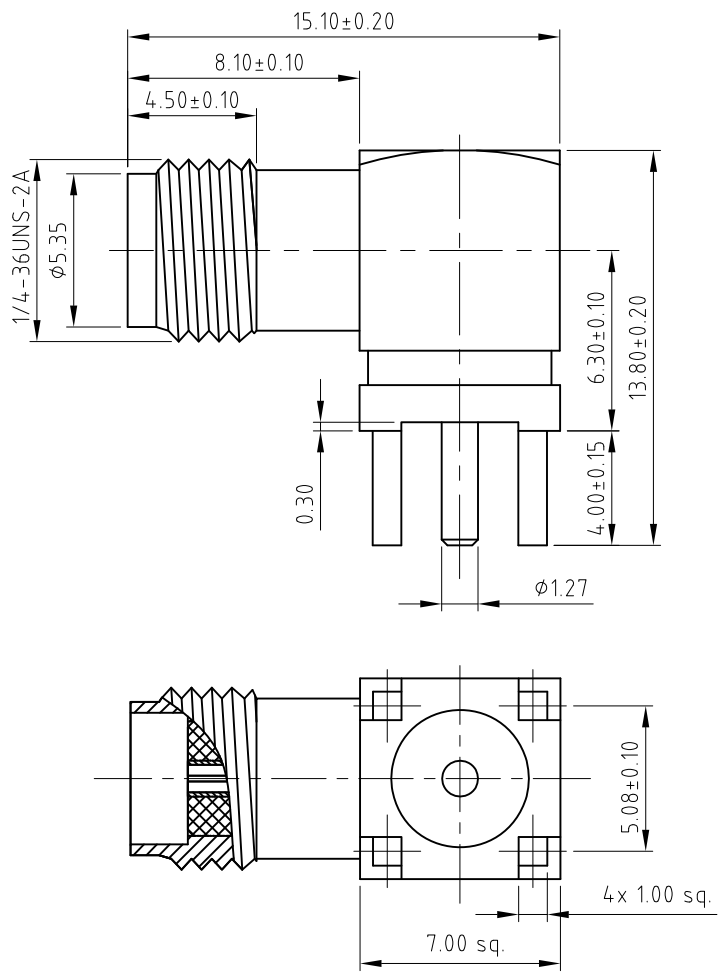
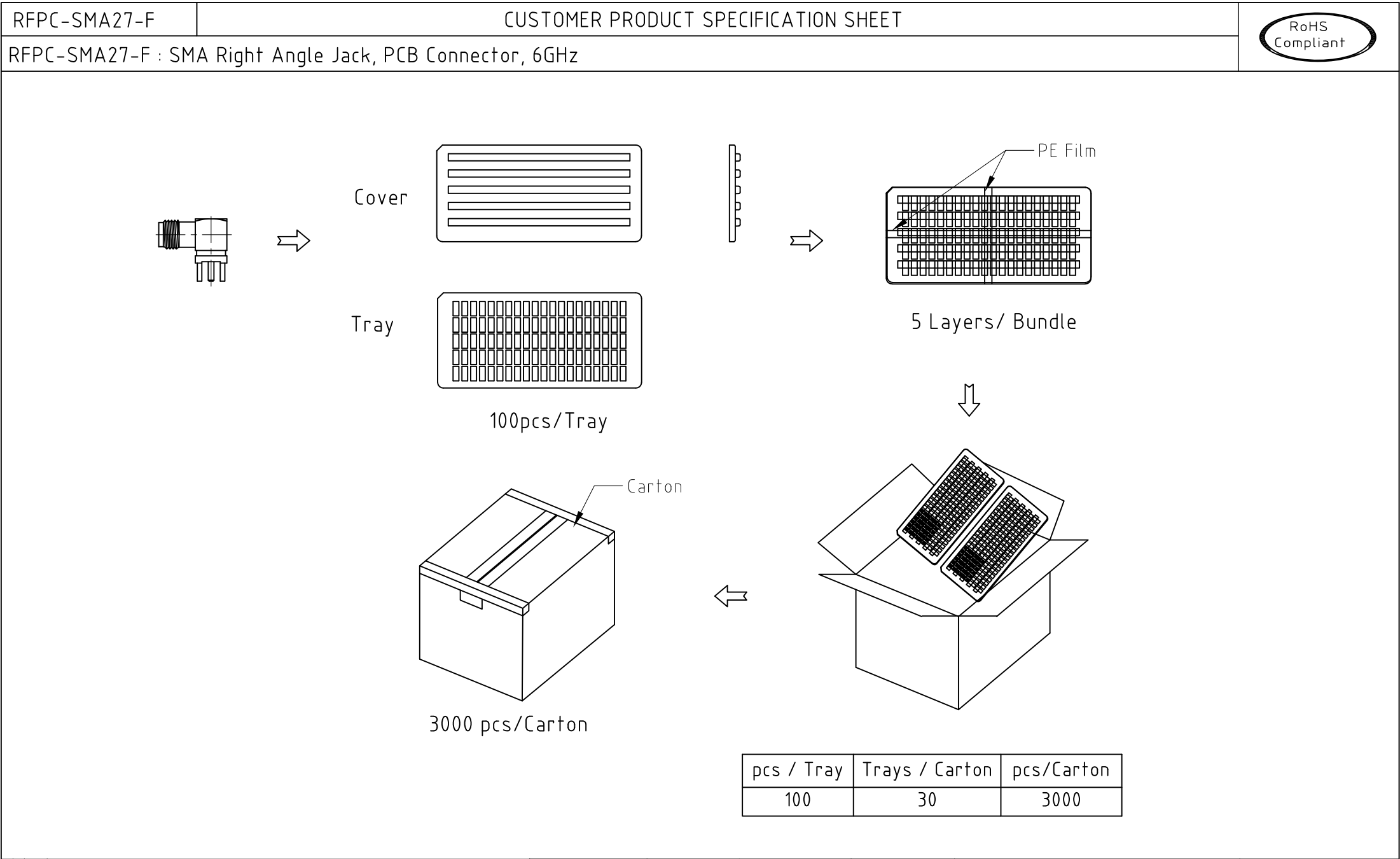


Material and Plating:
Insulator: PTFE
Pin: Brass, Gold
Body: Brass, Gold

Specification:
Operating Temperature: -55°C~+125°C
Working Frequency Range: DC~6GHz
Impedance: 50 Ohm.



Recommended PCB Layout
Tolerance:±0.05



Mouser Electronics

Authorized Distributor

Click to View Pricing, Inventory, Delivery & Lifecycle Information:

[GCT:](#)

[RFPC-SMA27-F](#)