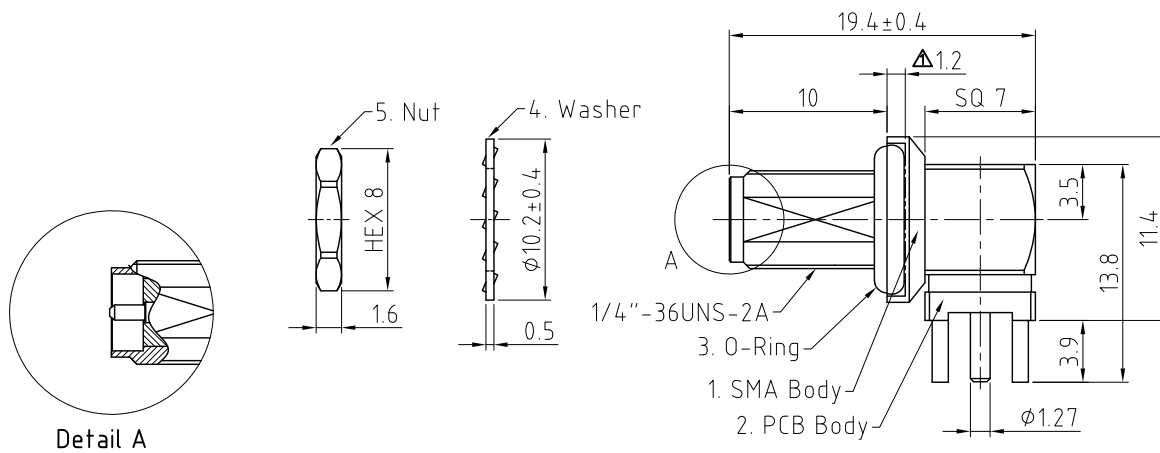


Material and Plating:

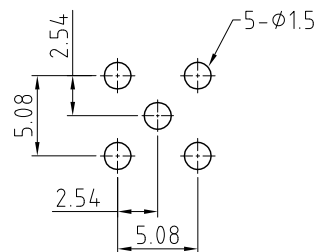
1. SMA Body: SUS303, Passivated
- Insulator A: Teflon
- Insulator B: Teflon
- Insulator C: Teflon
- Washer: Brass, Nickel Plated
- Gasket A: Silicone
- Gasket B: Silicone
- Pin A: Brass, Gold Plated
- Pin B: Brass, Gold Plated
2. PCB Body: Brass, Gold Plated
3. O-Ring: See P/N Options
4. Lock Washer: SUS303, Passivated.
5. Nut: SUS303, Passivated



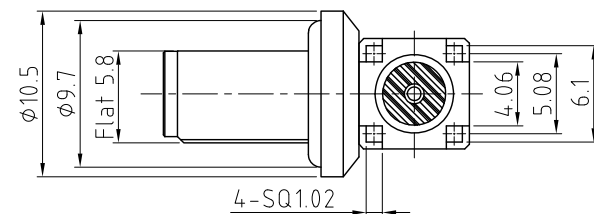
Environmental:

A. Tested to:

- i. IP6x – Dust tight – no particle ingress.
- ii. IPx8 Waterproof for 48 hour at 1 meter underwater.
- iii. IPx9K Water spray, 14-16L per minute, at 8,000 ~ 10,000 kPa, at 100-150mm distance for 30 seconds. underwater



## Recommended PCB Hole Layout



Notes:

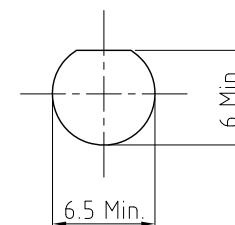
1. Working Frequency Range: DC-6GHz.
2. Operating Tempereature : -65°C to +165°C.
3. Please use the recommended torque forces for stainless connectors. This is published on Gradconn.com resources page.
4. Impedance: 50 Ohm.

## HOW TO ORDER

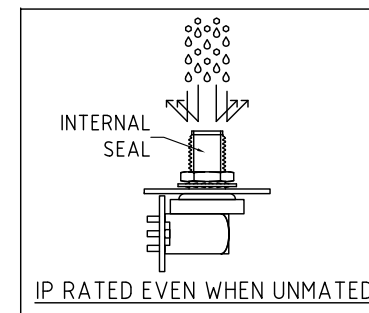
RFPC - SMA24 - FN - X - X




WASHER AND NUT OPTIONS:  
BLANK = SEPARATELY PACKED (STANDARD)  
A = ALL ASSEMBLED WITH CONNECTOR

O-RING MATERIAL OPTIONS:  
E = EPDM, COLOR: BLACK (STANDARD)  
S = SILICONE, COLOR: RED



Recommended Mounting Hole  
(Recommended Maximum Panel  
Thickness: 2.0mm)



REV. DATE & DRN 10 24/07/73 - NYW RELEASE 11 09/07/73 - NYW ADD PWS, UPDATE NOTE 1 12 06/07/73 - NYW REMOVED DIMENSION MARKING 13 08/07/73 - NYW ADD 305 MATERIAL 14 25/07/74 - NYW UPDATE P LATING TO 08/09K 15 31/07/74 - CC MODIFY P LATING VIEW	Scale: NTS	THIRD ANGLE	Unstated Tolerances: X ±0.20 .XX ±0.20 XX ±0.20 ANGLES ±2°	 IP Rated RF Products	 www.gradconn.com	Type: RFPC-SMA24-FN
	Drawn: CC					RFPC-SMA24-FN
	App'd: XXX	Title SMA PCB Connector				Drawing Number:
	Date: 31 MAR. '24	Revision: 1.5	Unit: mm			Sheet 1 of 1
						Drawing © E and O E

# Mouser Electronics

Authorized Distributor

Click to View Pricing, Inventory, Delivery & Lifecycle Information:

[GCT:](#)

[RFPC-SMA24-FN-A-E](#)