





Material and Plating:

1. SMA Body: SUS303, Passivated 
Insulator A: Teflon
Insulator B: Teflon
Washer: Brass, Nickel Plated 
Gasket A: Silicone
Gasket B: Silicone
Pin: Phosphor Bronze, Gold Plated
2. PCB Body: Brass, Gold Plated
Insulator C: Teflon
3. O-Ring: See P/N Options
4. Lock Washer: SUS303, Passivated 
5. Nut: SUS303, Passivated 

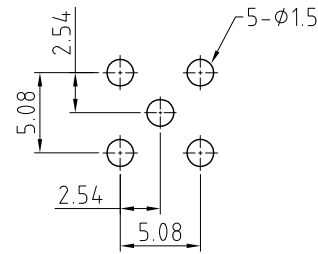
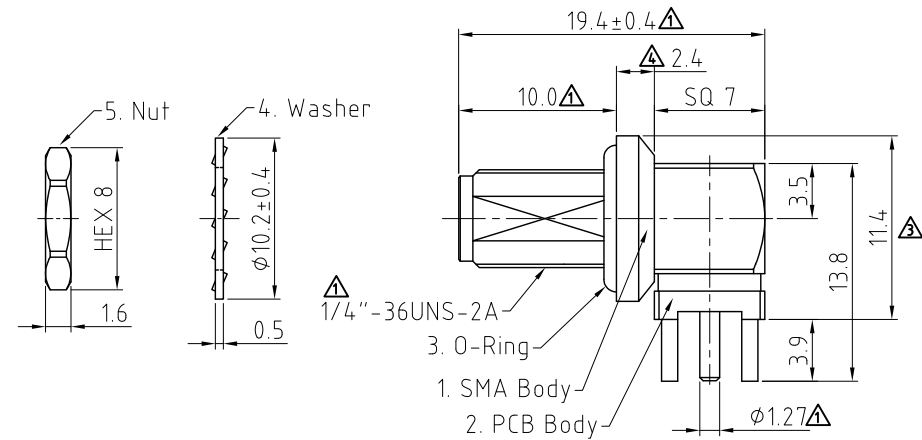
Environmental:

A. Tested to:

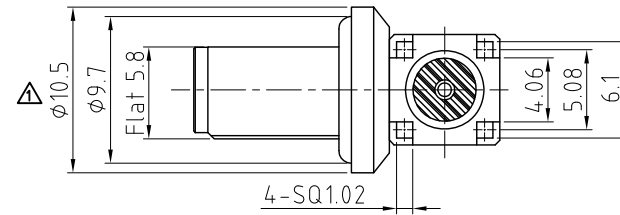
- i. IP6x – Dust tight – no particle ingress.
- ii. IPx8 Waterproof for 48 hour at 1 meter underwater.
- iii. IPx9K Water spray, 14–16L per minute, at 8,000 ~ 10,000 kPa, at 100–150mm distance for 30 seconds. underwater

Notes:

1. Working Frequency Range: DC-6GHz.
2. Operating Temperature : -65°C to +165°C.
3. Please use the recommended torque forces for stainless connectors. This is published on Gradconn.com resources page.
4. Impedance: 50 Ohm.



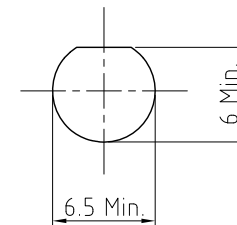
Recommended PCB Hole Layout



HOW TO ORDER
RFPC - SMA22 - FN - X - X

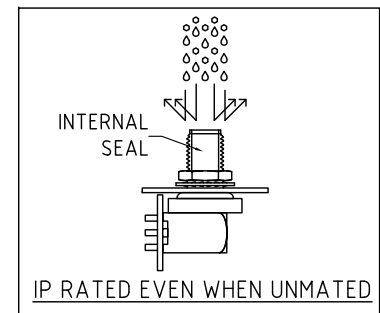
WASHER AND NUT OPTIONS:
 BLANK = SEPARATELY PACKED (STANDARD)
 A = ALL ASSEMBLED WITH CONNECTOR






O-RING MATERIAL OPTIONS:
E = EPDM, COLOR: BLACK
S = SILICONE, COLOR: RED



Recommended Mounting Hole

⚠ (Recommended Maximum Panel Thickness: 2.0mm)



REV. DATE & DRN	10.23/07/21 - NYM RELEASE	11.01/07/22 - NYM ANERO CLRING OPTION CODES	12.04/09/22 - NYM ANERO TREAD TO 10.0	13.06/01/22 - NYM ADD PANEL THICKNESS NOTE	14.07/07/22 - NYM ANERO ANERO PLATING MATERIAL	15.10/01/23 - NYM ADD NOTE 3	16.01/07/23 - NYM ANERO TPLD	17.01/07/23 - NYM ADD DIMENSION	18.03/07/23 - NYM MARK COMPONENT NUMBERS	19.04/07/23 - NYM ADD NOTE 4	20.07/07/23 - NYM ANERO P PLATING	21.01/07/23 - NYM ANERO P PLATING	22.03/03/24 - CC ADD SUS MATERIAL	23.03/03/24 - CC ADD P PLATING VIEW
Scale: NTS	THIRD ANGLE	Unstated Tolerances: .X ±0.20 XX ±0.20 .XXX ±0.20 ANGLES ±2°												
Drawn: CC														
App'd: XXX	Title SMA PCB Connector													
Date: 31 MAR. '24	Revision: 2.2	Unit: mm												
 														
IP Rated RF Products			www.gradconn.com											
 THIS DRAWING IS CONFIDENTIAL AND MUST NOT BE COPIED OR DISCLOSED WITHOUT WRITTEN CONSENT														
			Type: RFPC-SMA22-FN RFPC-SMA22-FN Drawing Number: Sheet 1 of 1 Drawing  E and O E											

Mouser Electronics

Authorized Distributor

Click to View Pricing, Inventory, Delivery & Lifecycle Information:

[GCT:](#)

[RFPC-SMA22-FN-A-E](#) [RFPC-SMA22-FN-A-S](#)