

Insulator A: Teflon
Insulator B: Teflon
Body: Brass, Gold Plated
Pin: Brass, Gold Plated
Gasket: Silicone, Color: Red
O-Ring: Silicone, Color: Red

Washer: Brass, Gold Plated

Nut: Brass, Gold Plated

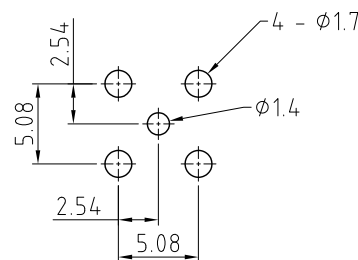
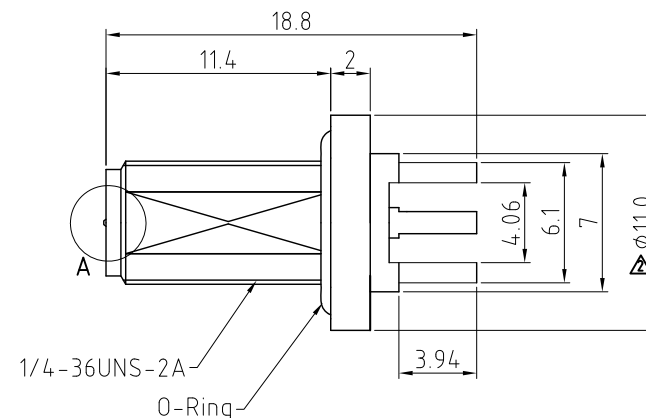
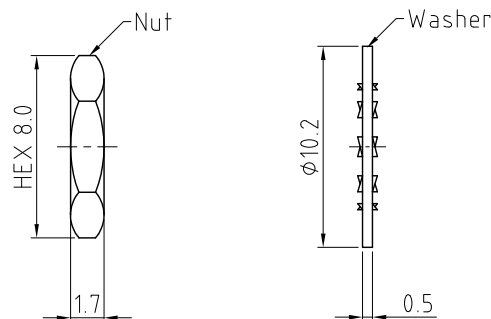
Environmental:

A. Tested to:

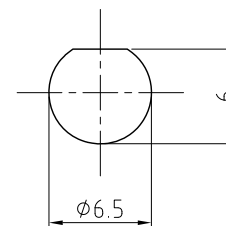
- i. IP6x – Dust tight – no particle ingress.
- ii. IPx7 Waterproof for 30 minutes up to 1 meter underwater.
- iii. IPx8 Waterproof for 48 hours at 1 meter underwater.

Notes:

1. Packaging Type: Tray.
2. Working Frequency Range: DC~3GHz.
3. Operating Temperature: -55°C~+155°C.
4. Impedance: 50 ohm.

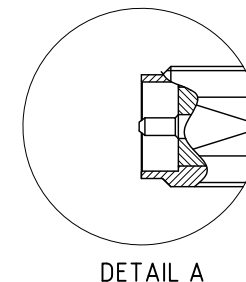


Recommended PCB Hole Layout



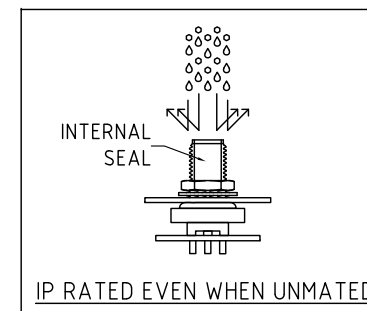
Recommended Mounting Hole




Applicable Panel Thickness:
Min. 0.7mm ~ Max. 3.2mm



HOW TO ORDER
RFPC - SMA17 - FN - X

WASHER AND NUT OPTIONS:
 BLANK = SEPARATELY PACKED (STANDARD)
 A = ALL ASSEMBLED WITH CONNECTOR



REV. DATE & DRN	10.30/07/18 - NYW RELEASE	Scale: NTS	THIRD ANGLE	Unstated Tolerances:	 	Type: RFPC-SMA17-FN
11.30/08/18 - NYW	12.30/09/18 - NYW	Drawn: CC		X ±0.2 XX ±0.2 XXX ±0.2 ANGLES N/A		RFPC-SMA17-FN
12.30/09/18 - NYW	12.27/12/18 - NYW	App'd: XXX	Title SMA PCB Connector			Drawing Number:
13.16/02/19 - NYW	14.27/05/19 - NYW	Date: 31 MAR. '24	Revision: 1.7	Unit: mm		Sheet 1 of 1
15.10/06/19 - NYW	16.02/07/19 - NYW					Drawing © E and O E
17.31/03/24 - CC	ADD OPERATING TEMP.					
	ADD OPERATING TEMP.					
	ADD OPERATING TEMP.					
	ADD OPERATING TEMP.					
	ADD OPERATING TEMP.					
	ADD OPERATING TEMP.					
	ADD OPERATING TEMP.					
	ADD OPERATING TEMP.					
	ADD OPERATING TEMP.					
	ADD OPERATING TEMP.					
	ADD OPERATING TEMP.					
	ADD OPERATING TEMP.					
	ADD OPERATING TEMP.					
	ADD OPERATING TEMP.					
	ADD OPERATING TEMP.					
	ADD OPERATING TEMP.					
	ADD OPERATING TEMP.					
	ADD OPERATING TEMP.					
	ADD OPERATING TEMP.					
	ADD OPERATING TEMP.					
	ADD OPERATING TEMP.					
	ADD OPERATING TEMP.					
	ADD OPERATING TEMP.					
	ADD OPERATING TEMP.					
	ADD OPERATING TEMP.					
	ADD OPERATING TEMP.					
	ADD OPERATING TEMP.					
	ADD OPERATING TEMP.					
	ADD OPERATING TEMP.					
	ADD OPERATING TEMP.					
	ADD OPERATING TEMP.					
	ADD OPERATING TEMP.					
	ADD OPERATING TEMP.					
	ADD OPERATING TEMP.					
	ADD OPERATING TEMP.					
	ADD OPERATING TEMP.					
	ADD OPERATING TEMP.					
	ADD OPERATING TEMP.					
	ADD OPERATING TEMP.					
	ADD OPERATING TEMP.					
	ADD OPERATING TEMP.					
	ADD OPERATING TEMP.					
	ADD OPERATING TEMP.					
	ADD OPERATING TEMP.					
	ADD OPERATING TEMP.					
	ADD OPERATING TEMP.					
	ADD OPERATING TEMP.					
	ADD OPERATING TEMP.					
	ADD OPERATING TEMP.					
	ADD OPERATING TEMP.					
	ADD OPERATING TEMP.					
	ADD OPERATING TEMP.					
	ADD OPERATING TEMP.					
	ADD OPERATING TEMP.					
	ADD OPERATING TEMP.					
	ADD OPERATING TEMP.					
	ADD OPERATING TEMP.					
	ADD OPERATING TEMP.					
	ADD OPERATING TEMP.					
	ADD OPERATING TEMP.					
	ADD OPERATING TEMP.					
	ADD OPERATING TEMP.					
	ADD OPERATING TEMP.					
	ADD OPERATING TEMP.					
	ADD OPERATING TEMP.					
	ADD OPERATING TEMP.					
	ADD OPERATING TEMP.					
	ADD OPERATING TEMP.					
	ADD OPERATING TEMP.					
	ADD OPERATING TEMP.					
	ADD OPERATING TEMP.					
	ADD OPERATING TEMP.					
	ADD OPERATING TEMP.					
	ADD OPERATING TEMP.					
	ADD OPERATING TEMP.					
	ADD OPERATING TEMP.					
	ADD OPERATING TEMP.					
	ADD OPERATING TEMP.					
	ADD OPERATING TEMP.					
	ADD OPERATING TEMP.					
	ADD OPERATING TEMP.					
	ADD OPERATING TEMP.					
	ADD OPERATING TEMP.					
	ADD OPERATING TEMP.					
	ADD OPERATING TEMP.					
	ADD OPERATING TEMP.					
	ADD OPERATING TEMP.					
	ADD OPERATING TEMP.					
	ADD OPERATING TEMP.					
	ADD OPERATING TEMP.					
	ADD OPERATING TEMP.					
	ADD OPERATING TEMP.					
	ADD OPERATING TEMP.					
	ADD OPERATING TEMP.					
	ADD OPERATING TEMP.					
	ADD OPERATING TEMP.					
	ADD OPERATING TEMP.					
	ADD OPERATING TEMP.					
	ADD OPERATING TEMP.					
	ADD OPERATING TEMP.					
	ADD OPERATING TEMP.					
	ADD OPERATING TEMP.					
	ADD OPERATING TEMP.					
	ADD OPERATING TEMP.					
	ADD OPERATING TEMP.					
	ADD OPERATING TEMP.					
	ADD OPERATING TEMP.					
	ADD OPERATING TEMP.					
	ADD OPERATING TEMP.					
	ADD OPERATING TEMP.					
	ADD OPERATING TEMP.					
	ADD OPERATING TEMP.					
	ADD OPERATING TEMP.					
	ADD OPERATING TEMP.					
	ADD OPERATING TEMP.					
	ADD OPERATING TEMP.					
	ADD OPERATING TEMP.					
	ADD OPERATING TEMP.					
	ADD OPERATING TEMP.					
	ADD OPERATING TEMP.					
	ADD OPERATING TEMP.					
	ADD OPERATING TEMP.					
	ADD OPERATING TEMP.					
	ADD OPERATING TEMP.					
	ADD OPERATING TEMP.					
	ADD OPERATING TEMP.					
	ADD OPERATING TEMP.					
	ADD OPERATING TEMP.					
	ADD OPERATING TEMP.					
	ADD OPERATING TEMP.					
	ADD OPERATING TEMP.					
	ADD OPERATING TEMP.					
	ADD OPERATING TEMP.					
	ADD OPERATING TEMP.					
	ADD OPERATING TEMP.					
	ADD OPERATING TEMP.					
	ADD OPERATING TEMP.					
	ADD OPERATING TEMP.					
	ADD OPERATING TEMP.					

Mouser Electronics

Authorized Distributor

Click to View Pricing, Inventory, Delivery & Lifecycle Information:

[Global Connector Technology \(GCT\):](#)

[RFPC-SMA17-FN](#) [RFPC-SMA17-FN-A](#)