

## RFPC-MMCX05-F : MMCX Right Angle Jack, Surface Mount Type

## Material and Plating:

Insulator: Teflon

Pin: Beryllium Copper, Gold

Body: Brass, Gold

## Specification:

Durability: 500 Mating Cycles Min.

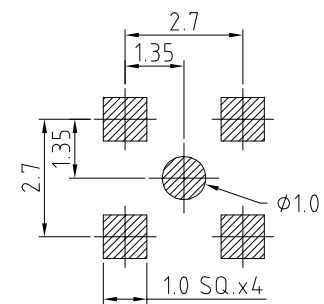
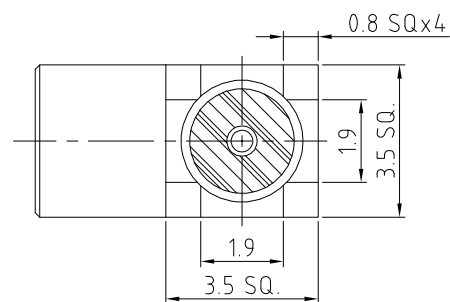
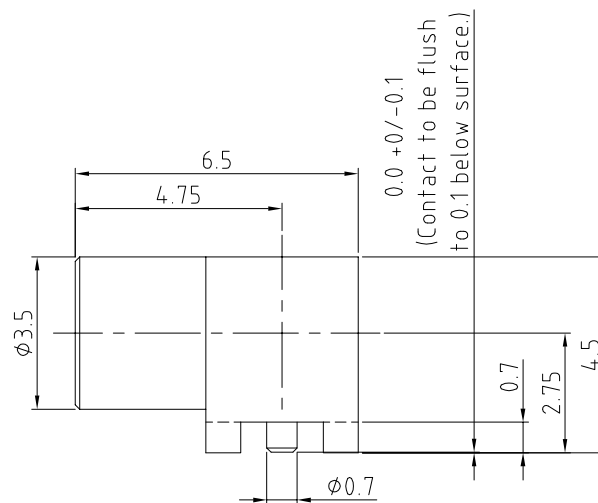
Operating Temperature: -40°C~+125°C

Working Frequency Range: DC~6GHz

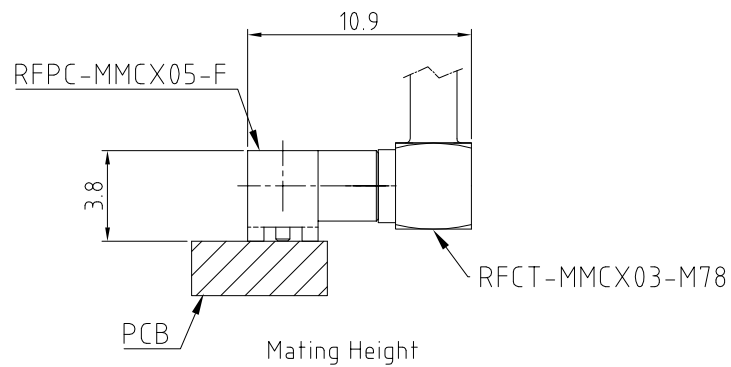
Impedance: 50 ohm.

## Notes:

1. The tape & reel packaging is available but not tooled,  
contact GradConn for more detail.



Recommended PCB SMT Layout



## HOW TO ORDER

R F P C - M M C X 0 5 - F - X

## PACKAGING OPTIONS:

T = TRAY

R = TAPE &amp; REEL (SEE NOTES 1.)

|   |
|---|
| REV. DATE & DRN                             |
| 10 21/05/19 - NYW RELEASE                   |
| 11 24/02/20 - NYW ADD MATING HEIGHT DIAGRAM |
| 12 27/07/20 - NYW AMEND OPERATING TEMP.     |
| 13 14/02/23 - NYW ADD IMPEDANCE             |

|                   |               |  |   |
|-------------------|---------------|--|---|
| Scale: NTS        | THIRD ANGLE   | Unstated<br>X<br>.XX<br>.XXX<br>ANGLES | Tolerances:<br>±0.2<br>±0.2<br>±0.2<br>±5 |
| Drawn: NYW        |               |  |   |
| App'd: XXX        | Title JACK    |  |   |
| Date: 14 FEB. '23 | Revision: 1.3 |  |   |

|                      |
|----------------------|
| Material<br>SEE NOTE |
| NOT TO SCALE         |
| Unit: mm             |



www.gradconn.com

© THIS DRAWING IS CONFIDENTIAL AND MUST NOT BE  
COPIED OR DISCLOSED WITHOUT WRITTEN CONSENT

|                     |
|---------------------|
| Type: RFPC-MMCX05-F |
| RFPC-MMCX05-F       |
| Drawing Number:     |
| Sheet 1 of 1        |
| Drawing © E and O E |

# Mouser Electronics

Authorized Distributor

Click to View Pricing, Inventory, Delivery & Lifecycle Information:

[GCT:](#)

[RFPC-MMCX05-F-T](#)