

Angle Position Sensors

AN8 Sensors

Programmable, non-contact magnetic position sensors capable of continuous rotation



Description

The AN8 Series sensors are non-contact, intrinsically linear angle position sensors. The sensors operate through the use of Hall Effect technology with magnetic fields generated by permanent magnets. They provide a linear change in voltage output (ratiometric to the input voltage) corresponding to an angular rotation of the input shaft.

Features

- Angular position sensor with high tolerance for misalignment
- Non-contact angular position sensing and full 360° rotation
- Custom programming available for: angle range, slope, PWM output, custom magnets – contact factory
- No mechanical interface means no parts to wear out or jam
- Available with Delphi connector or 12" (305 mm) wire leads
- RoHS compliant
- IP67
- Maximum air gap of 5.5 mm (0.22")*

Typical Applications

- Implement (fork lift, agricultural trailer hitch, etc.) position sensing
- Steer, throttle by wire
- Gear selection
- Zero-contact encoder alternative
- Replacement for smart bearings
- Outboard trim sensing

Environmental Specifications

| | |
|-----------------------|--|
| Vibration | 6g sinusoidal, 8 g RMS axial; 40Hz – 2 kHz all 3 axes |
| Operating Temperature | -40 °C to 125 °C (-40 °F to 257 °F) with Delphi connectors, -40 °C to 150 °C (-40 °F to 302 °F) with wire leads |
| Storage Temperature | -40 °C to 150 °C (-40 °F to 302 °F) |
| Ingress Protection | IP67 |

Electrical Specifications

| | |
|------------------------------|--|
| Input Voltage | 5.0 VDC \pm 10% |
| Output Voltage | 10% to 90% of input (see graph for voltage vs. rotation angle characteristics) |
| Input Current | 14 mA typ., 16 mA max. |
| Output Current | -8 mA to 8 mA |
| Output Accuracy | \pm 3.5% |
| Output Linearity | \pm 3.5% |
| Maximum Overvoltage | 16 VDC |
| Absolute Max. Output Current | \pm 30 mA |
| Output Type | Analog (PWM available) |

Mechanical Specifications

| | |
|---------------------------------|---|
| Housing Material | Glass Reinforced Plastic |
| Mechanical Travel | 0° to 360° (continuous) |
| Mating Connector | Delphi Metri-pak 150.2 12162185; Terminal 1214075 / 2047680 |
| Maximum Air Gap* | 5.5 mm (0.22") |
| *with AS500106 magnet carrier | |
| Maximum Center-To-Center Offset | 2 mm radial (magnet to center) |

www.switches-sensors.zf.com ZF Electronics Systems Pleasant Prairie, LLC ("ZF") acquired the rights to the CHERRY branded switches and sensors in 2008. Although ZF divested its interest in the CHERRY name in 2015, the switches and sensors remain unchanged and are now sold under the ZF brand.

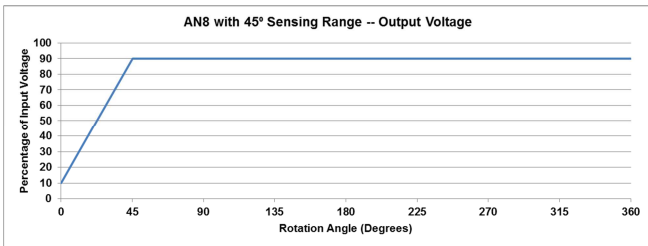
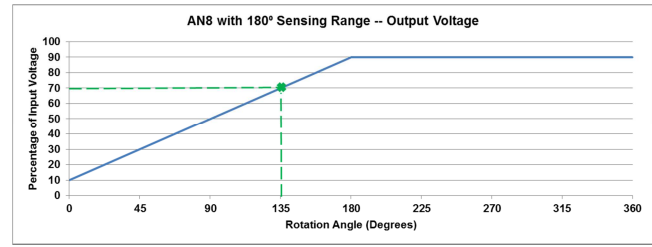
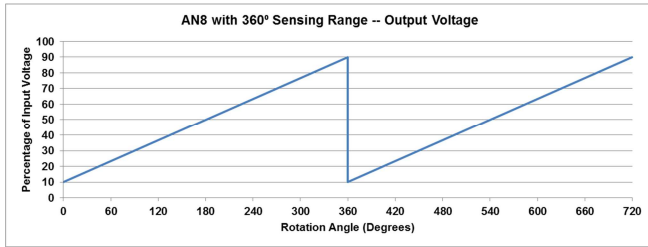


Products

| Part Number (Sensor) | Sensor (incl. AS500106 magnet) | Sensing Range | Wires | Connectors | Terminals |
|----------------------|--------------------------------|---------------|-----------------------|--------------------|-------------------|
| AN820001 | CU103601 | 180° | N/A | Packard Metri-pack | 1214075 / 2047680 |
| AN820002 | CU103602 | 360° | N/A | Packard Metri-pack | 1214075 / 2047680 |
| AN820003* | CU103603 | 45° | N/A | Packard Metri-pack | 1214075 / 2047680 |
| AN820031 | ----- | 180° | 18 AWG x 305 mm (12") | N/A | N/A |
| AN820032 | ----- | 360° | 18 AWG x 305 mm (12") | N/A | N/A |
| AN820033* | ----- | 45° | 18 AWG x 305 mm (12") | N/A | N/A |

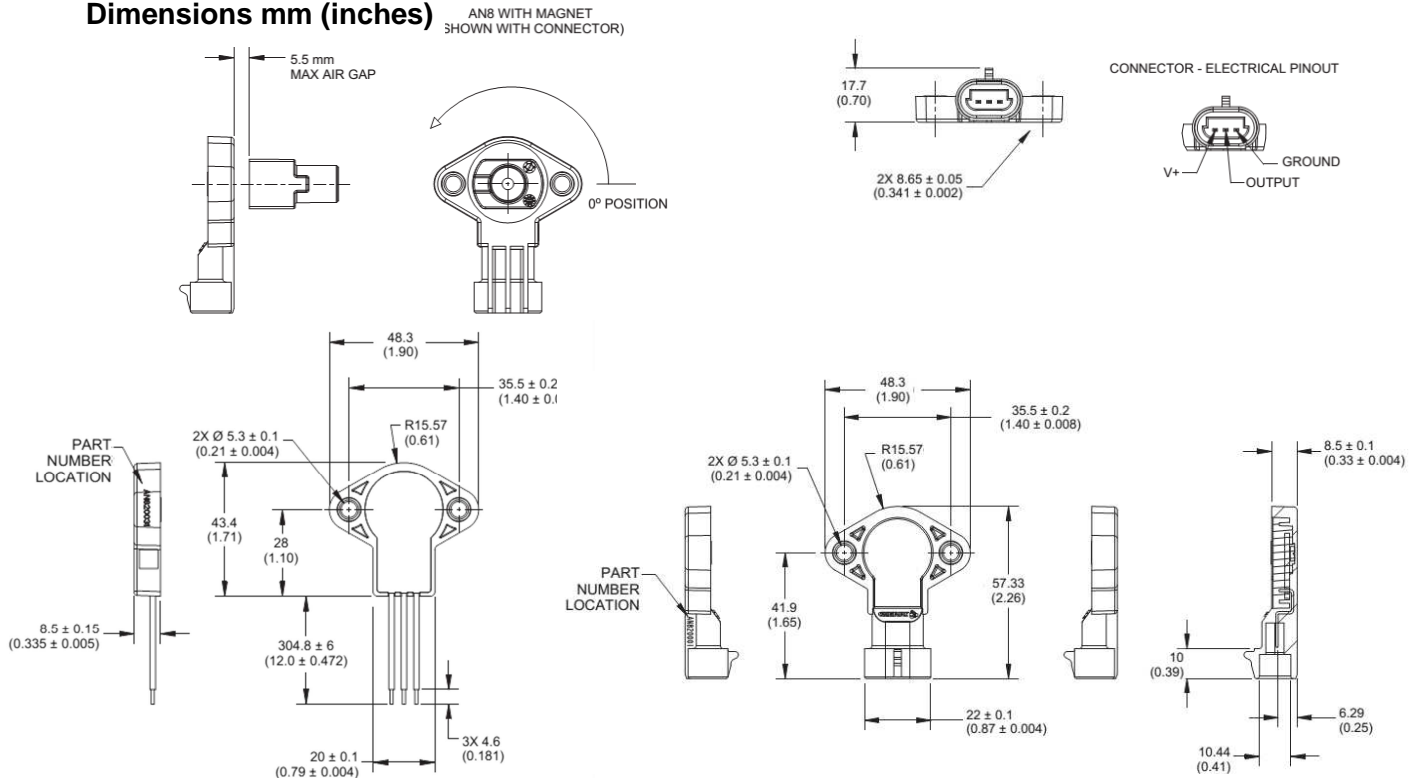
*Not commonly stocked

Sensor Output



These charts show the output voltage as a percentage of the input voltage for a given angle of rotation.
 Example: 180° sensing range, magnet rotated 135°, output voltage will be 70% of input voltage (see dashed lines in graph above).

Dimensions mm (inches)



www.switches-sensors.zf.com ZF Electronics Systems Pleasant Prairie, LLC ("ZF") acquired the rights to the CHERRY branded switches and sensors in 2008. Although ZF divested its interest in the CHERRY name in 2015, the switches and sensors remain unchanged and are now sold under the ZF brand.



Mouser Electronics

Authorized Distributor

Click to View Pricing, Inventory, Delivery & Lifecycle Information:

[ZF Electronics:](#)

[AN820002](#) [AN820001](#) [AN820031](#) [AN820033](#)