

# LUMOTAST 25, keylock switch, 1 removal position, 1 NO, Gold, Male quick connector / plug-in socket, 90°, latching, key removal position 0

**DISCONTINUED**


## fields of application

- Measurement-control-regulation
- Mechanical and system engineering
- Signalling systems

## special features

- Mounting hole diameter 16.2 mm
- Switching position: 1 x 90° latching
- Mounting depth behind the front panel only 30.7 mm with female quick connector
- Gold contacts for safe switching
- Reverse-polarity-secured terminal with 4-pole male quick connector and crimped ribbon cable
- Alternative: terminal with plug-in socket in PCB
- Water jet protection class IP 65 on front
- 1 NO gold contact (max. 35 V/100 mA)



## description

lock manufacturer Kaba

## technical data

### > general

|   |               |
|---|---------------|
| illuminated   | No            |
| Bezel color   | black         |
| Collar shape  | square        |
| Operating temperature, min.                                 | -25 °C        |
| Operating temperature, max.                                 | 70 °C         |
| Storage temperature, min.                                   | -40 °C        |
| Storage temperature, max.                                   | 80 °C         |
| Packaging   | Box           |
| Packaging unit  | 2 pcs.        |
| Operating life  | 50,000 Cycles |
| Degree of protection, front side, according to DIN EN 60529 | IP65          |
| RoHS compliant  | Yes           |
| REACH compliant   | Yes           |

### > mounting diameters

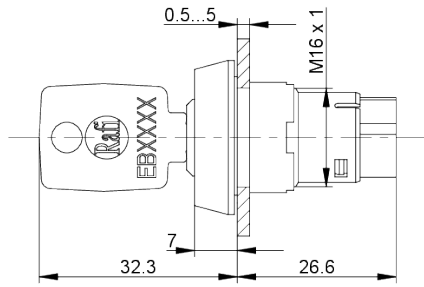
### direct links

- [RAFI eCatalog](#)

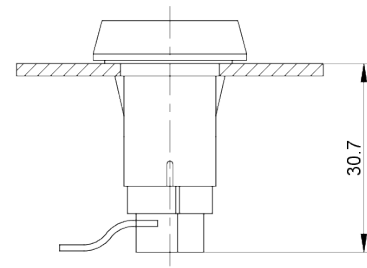
|                             |                                       |
|-----------------------------|---------------------------------------|
| Mounting hole               | 16.2 mm                               |
| Mounting depth              | 30.7 mm                               |
| Installation height         | 32.3 mm                               |
| Outside dimension, length   | 25 mm                                 |
| Outside dimension, width    | 25 mm                                 |
| <b>&gt; mechanical data</b> |                                       |
| Actuation function          | latching                              |
| Operating torque            | 1.5 Nm                                |
| Contact function            | 1 NO                                  |
| Contact system              | Snap-action contact                   |
| Contact material            | Gold                                  |
| Locking position            | 10000                                 |
| Number of locking positions | 10,000                                |
| Key removal position        | 0                                     |
| Rotating angle              | 90°                                   |
| Fixing                      | Threaded ring                         |
| Terminal on the rear        | Male quick connector / plug-in socket |
| <b>&gt; electrical data</b> |                                       |
| Rated voltage, min.         | 0.02 V                                |
| Rated voltage, max.         | 35 V                                  |
| Rated current, min.         | 0.0001 A                              |
| Rated current, max.         | 0.1 A                                 |

**drawings**

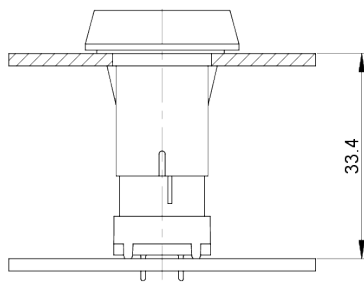
**Dimensioned drawing**



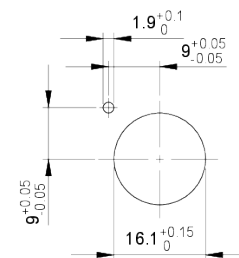
**System drawing**



**System drawing**



**Mounting hole drawing**



# Mouser Electronics

Authorized Distributor

Click to View Pricing, Inventory, Delivery & Lifecycle Information:

[RAFI:](#)

[1.15.156.301/0000](#)