

Panel mounting sockets - W 2 x 4.6d

1.72.401.021/0000



Mechanical design

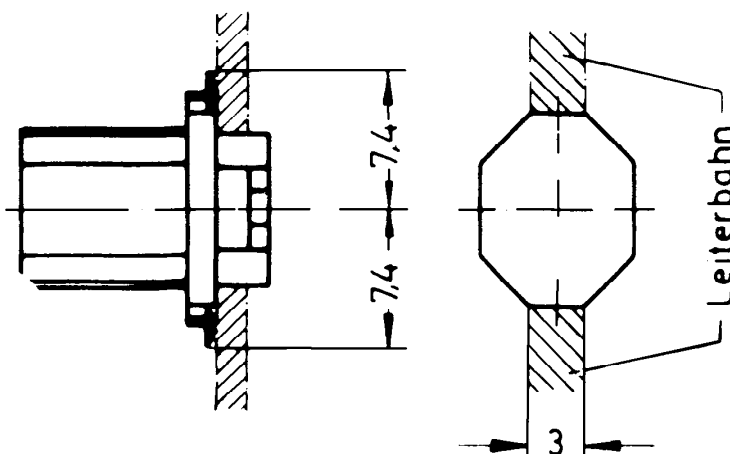
Mounting	90° turn
Terminals	2 spring contacts
Lamp socket	W 2 x 4.6d

Electrical characteristics

Limit values	35 V/1,5 W
--------------	------------

Other specifications

Weight	1 g
ROHS compliant	yes
REACH compliant	yes



Mouser Electronics

Authorized Distributor

Click to View Pricing, Inventory, Delivery & Lifecycle Information:

[RAFI:](#)

[1.72.401.021/0000](#)