

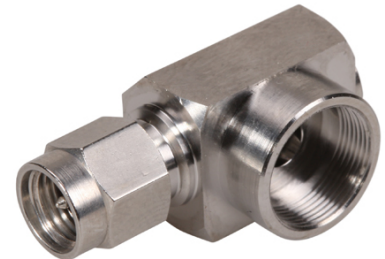
Coaxial Cable Connector 16_SMA-50-0-150/033_-

Description

Right angle cable plug

Interface standards

IEC 60169-15 / Connector for use with SPJ/CPJ Assembly



Technical Data

Electrical Data

Impedance	50 Ω		
Interface frequency max.	6 GHz		
Frequency range	DC to 1 GHz	1.7 to 2.7 GHz	3.8 to 6 GHz
Return loss	35 dB	32 dB	25 dB

Mechanical Data

Centre contact	plugged
Outer contact	clamped
Weight	0.014 kg

Environmental Data

Operating temperature	-65 °C to 165 °C
2011/65/EU (RoHS - including 2015/863 and 2017/2102)	compliant

Material Data

Piece Parts	Material	Surface Plating
Centre contact	Brass	Silver Plating
Outer contact	Brass	SUCOPLATE (R) Plating
Body	Brass	SUCOPLATE (R) Plating
Insulator	PTFE (Polytetrafluoroethylene)	
Coupling nut	Brass	SUCOPLATE (R) Plating
Gasket	VMQ (Silicone rubber)	

Related Documents

Outline drawing	DOU-00327011
Assembly instruction	DOC-0000775715

Ordering Information

Single package	16_SMA-50-0-150/033_-E
----------------	------------------------

Additional Information

Suitable cables	SUCOFORM_122_LA_CU_CMP, SUCOFORM_141_LA_CU_CMP, SUCOFORM_141_CU_CMP, SUCOFORM_222_LA_CU_CMP, SPJ/CPJ assemblies
-----------------	---

Remarks

Only in combination with SPJ/PCC assemblies Not valid for direct connection with the SUCOFORM_xxx(_LA)_CU_CMP cables

Coaxial Cable Connector 16_SMA-50-0-150/033_-

Mouser Electronics

Authorized Distributor

Click to View Pricing, Inventory, Delivery & Lifecycle Information:

[HUBER+SUHNER:](#)

[16_SMA-50-0-150/033_-E](#)