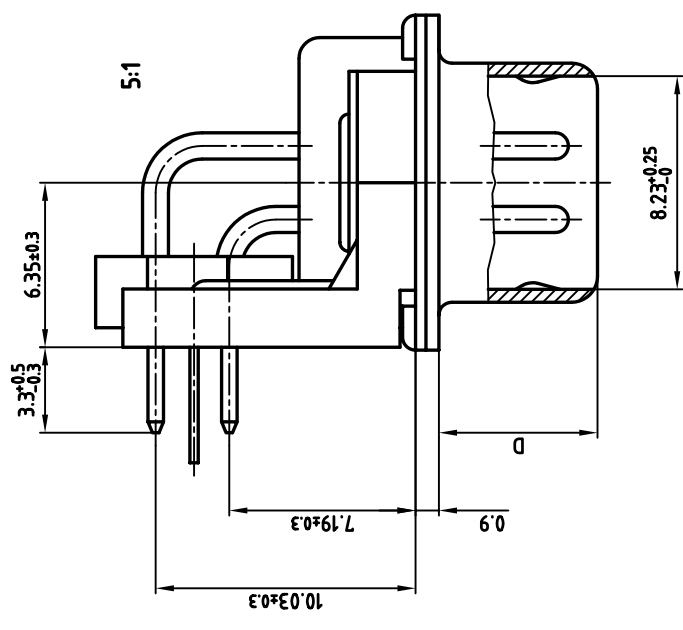


used for: D-SUB FILTER



NOTES:

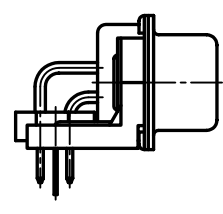
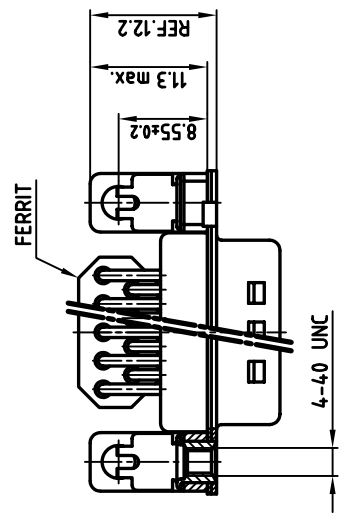
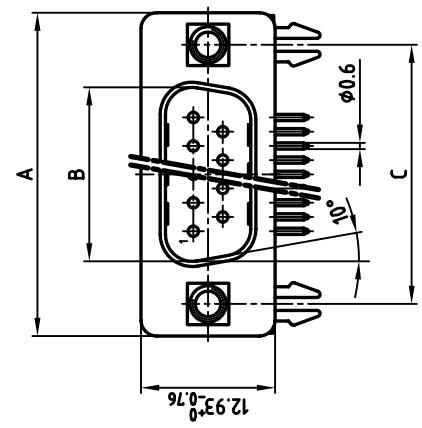
1. METALSHELLS: STEEL; min. 320µ" TIN
2. INSULATORS: PBT GF UL 94 V-0, BLACK
3. CONTACTS: COPPER ALLOY
4. PLATING: min. 8µ" HARD GOLD OVER min. 50µ" NICKEL
5. MOUNTING BRACKET: PBT GF UL 94 V-0, BLACK
6. THREADED INSERT: COPPER ALLOY; min. 200µ" TIN over 80µ" NICKEL
7. PCB-SNAP: COPPER ALLOY; min. 200µ" TIN over 80µ" NICKEL
PCB-HOLE: $\phi 3.1 \pm 0.1$; PCB THICKNESS 1.6mm
8. P.C.B. HOLE DRILLINGS ON DRAWING NO.: 16K111UA
9. CAPACITANCE: 1300pF $\pm 20\%$
10. MAXIMUM TORQUE VALUE FOR THREAD: 6" LBS



THIS DRAWING MAY NOT BE COPIED OR REPRODUCED IN ANY WAY, AND MAY NOT BE PASSED ON TO A THIRD PARTY WITHOUT WRITTEN PERMISSION.
OWNERSHIP AND COPYRIGHT OF CONEC GMBH
DO NOT ALTER CAD DRAWING BY HAND

tolerance		scale:	2:1 (5:1)
material:		material:	SEE NOTES
title:	D-SUB FILTER MALE 90° 0.318inch 9-37pos.		
2001	date	name	threaded insert, mounting bracket, clip, ferrit dwg no: 24K1A143A AutoCAD 2000 3 sh: 1/1
drawn	02.07.	Pareil	
appd.	02.07.	E. Mickenbecker	
norm	DIN 41652		
e-uid			

No. of pos.	A	B	C	D	Part NO.
9	31.19	16.79	25.00 ^{+0.12} _{-0.13}	6.12	241A29840X
15	39.52	25.12	33.30 ^{+0.15} _{-0.11}	6.12	
25	53.42	38.84	47.04 ^{+0.13}	5.99	
37	69.70	55.30	63.50 ^{+0.13}	5.99	



part no: SEE TABLE



rev.	description	date	name

Mouser Electronics

Authorized Distributor

Click to View Pricing, Inventory, Delivery & Lifecycle Information:

[CONEC:](#)

[241A29840X](#)