

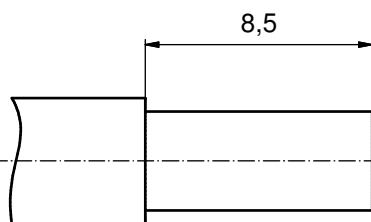
NOTES:

CRIMPING:
 USE CRIMP TOOL: 360X10409X
 WITH TOOL INSERT: 360X20029X
 SELECTOR SETTINGS: 5 FOR AWG 12
 4 FOR AWG 14

plating	part no.
GOLD FLASH over NICKEL	132A11029X
30µin HARD GOLD over min. 50µin NICKEL	132C11029X
50µin HARD GOLD over min. 50µin NICKEL	132J11029X

RoHS compliant

STRIPPING DIMENSIONS



pos	qty	description	material	plating
3	1	RETAINING RING	COPPER ALLOY	NICKEL PLATED
2	1	REAR SIDE	COPPER ALLOY	GOLD FLASH over NICKEL
1	1	MATING SIDE	COPPER ALLOY	see table

partlist		tolerance	dim. in mm	scale:	5:1		
THIS DRAWING MAY NOT BE COPIED OR REPRODUCED IN ANY WAY, AND MAY NOT BE PASSED ON TO A THIRD PARTY WITHOUT WRITTEN PERMISSION. OWNERSHIP AND COPYRIGHT OF CONEC GmbH		date	name	material:	see notes		
DO NOT ALTER CAD DRAWING BY HAND		drawn	26.07.06	Lehmenkühler	title:		
		appd.	26.07.06	Kühle	HIGH POWER CONTACT FEMALE		
		norm			CRIMP VERSION 20A		
4 x c	Ä5997	22.02.16	K.H.	d-old	13K11E8A/13K1A188A	dwg no:	DIN-A3
2 x b	Ä3554	19.01.11	K.H.			13K1A1836	sh: 1
a	Origin					part no:	see table
rev.	description	date	name				



Mouser Electronics

Authorized Distributor

Click to View Pricing, Inventory, Delivery & Lifecycle Information:

[CONEC:](#)

[132J11029X](#)