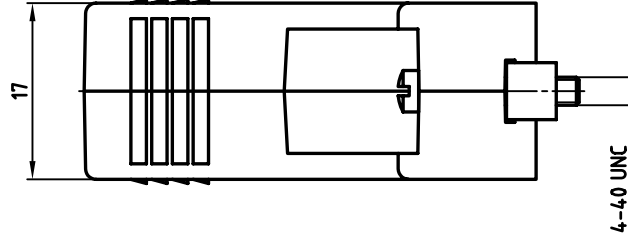
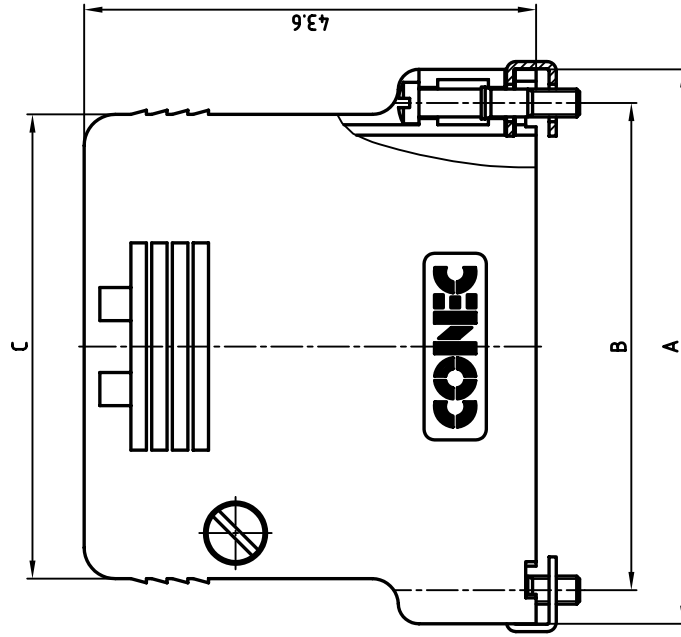
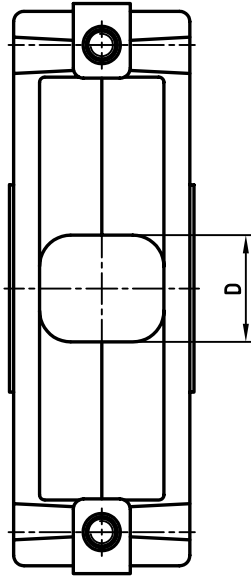


used for: D-SUB



**NOTES:**  
 MATERIAL: HOOD: POLYAMID 6.6 GF 25 UL 94 V-0; BLACK  
 SCREW: COPPER ALLOY; NICKEL PLATED  
 CLAMP: STEEL; NICKEL PLATED

NO. OF POS.	A	B	C	D	PART NO.
9	31.2	25.0	22.8	8.0	165X13179X
25	53.5	47.0	44.8	10.3	165X13199X
37	69.7	63.5	61.3	10.3	165X13209X

THIS DRAWING MAY NOT BE COPIED OR REPRODUCED IN ANY WAY, AND MAY NOT BE PASSED ON TO A THIRD PARTY WITHOUT WRITTEN PERMISSION.  
 OWNERSHIP AND COPYRIGHT OF CONEC GMBH DO NOT ALTER CAD DRAWING BY HAND



rev.	description	date	name
"b"	Ä 547	13.12.94	Bar.

1994	date	name
drawn	23.03.	Barcinski
appd.	23.03.	Mickenbacher
norm	DIN 41652	
e-old	16V110A	

tolerance:  $\pm 0.3$   
 scale:  $\frac{2:1}{1}$   
 material: SEE NOTES  
 title: TWO-PART HOOD  
 9, 25 and 37pos. FOR CABLE BINDING  
 FLAT VERSION  
 dwg no: AutoCADREL.13  
 DIN-A 3  
 sh: 1/1  
 part no: SEE TABLE



# Mouser Electronics

Authorized Distributor

Click to View Pricing, Inventory, Delivery & Lifecycle Information:

[CONEC:](#)

[165X13209X](#)