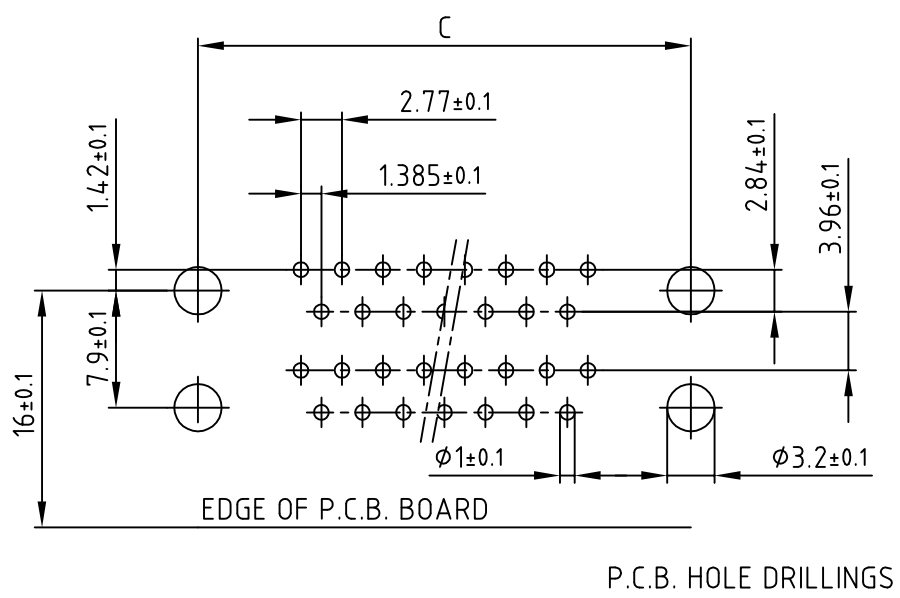
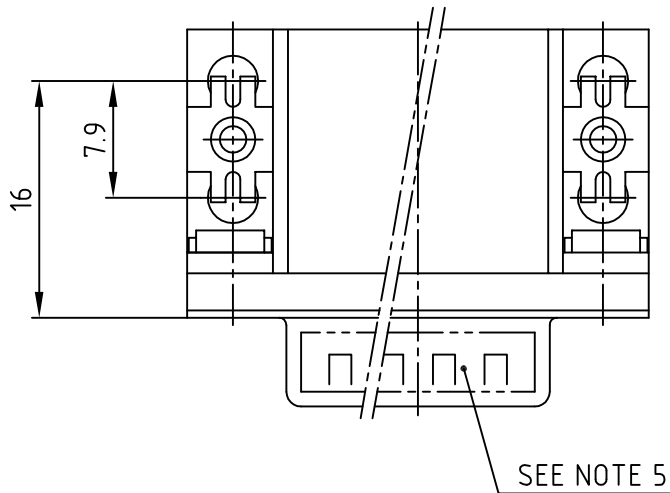
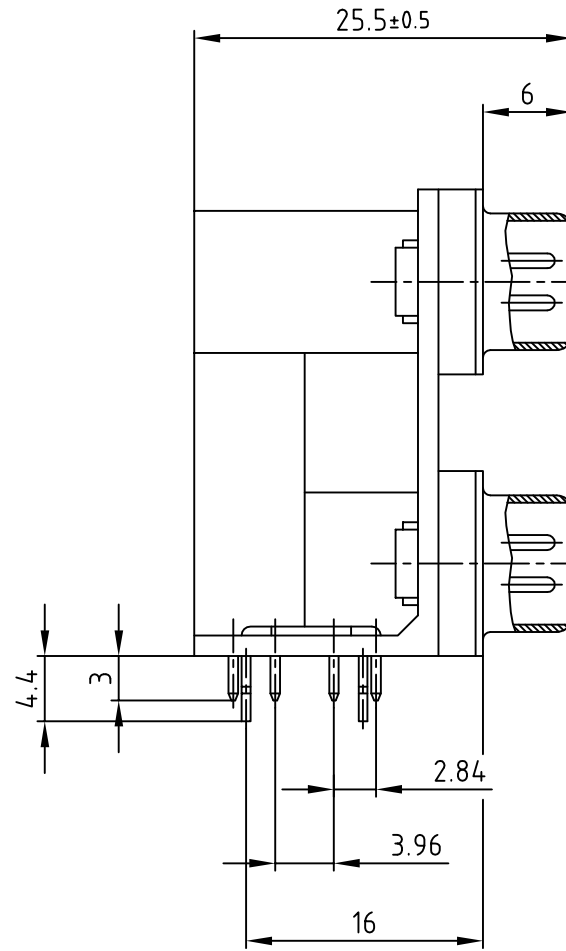
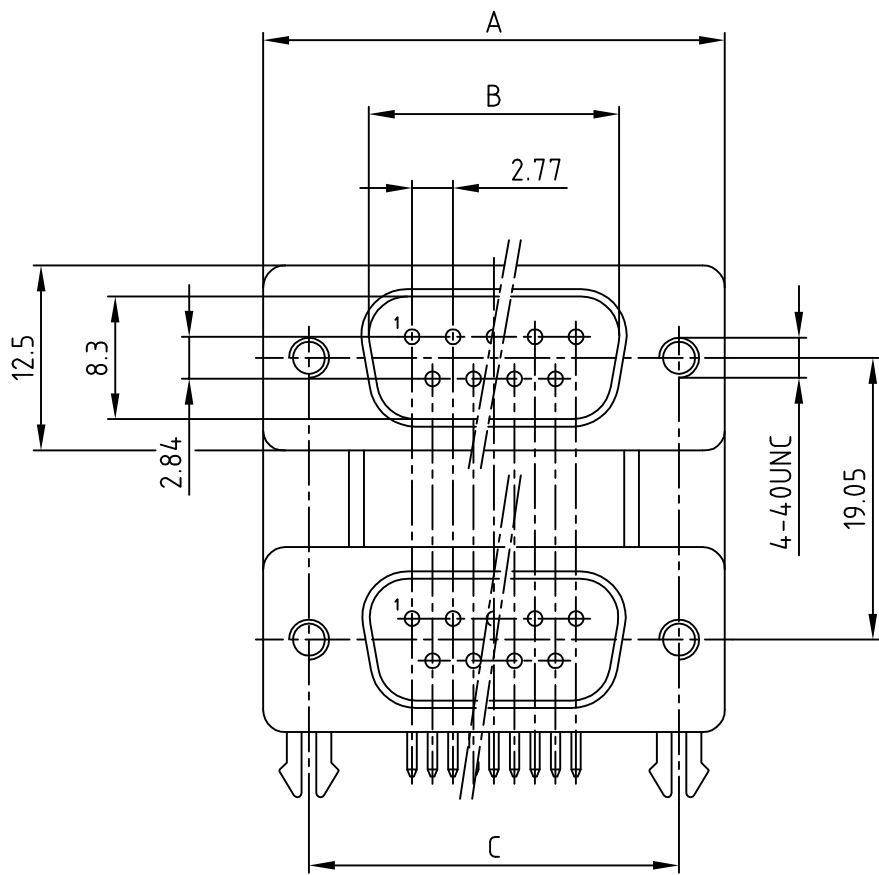


used for: D-SUB DUAL-PORT



No. of pos.	A	B	C	Part-NO.
2x 9	30.80	16.92	25.00	DLS1PP5AN23X
2x15	39.20	25.25	33.30	DLS2PP5AN23X
2x25	53.10	38.96	47.10	DLS3PP5AN23X
2x37	69.40	55.42	63.50	DLS4PP5AN23X

NOTES:

- METALSHELLS: STEEL; min. 320µ" TIN
- INSULATORS: PBT GF UL 94 V-0, BLACK
- CONTACTS: COPPER ALLOY
PLATING: 8µ" HARD GOLD OVER min. 50µ" NICKEL
- MAXIMUM TORQUE VALUE FOR THREAD: 6" LBS
- CONNECTOR IS PART MARKED: PART-NO. CONEC Y/WW
- = CRITICAL DIMENSION

Directive 2002/95/EC RoHS compliant

APPROVAL # FREIGABE # DEBLOCAGE # AUTOR/ZACION # APPROVAL	
CUSTOMER APPROVAL DATE:	
NAME:	TITLE:
COMPANY NAME:	
APPROVAL # FREIGABE # DEBLOCAGE # AUTOR/ZACION # APPROVAL	

THIS DRAWING MAY NOT BE COPIED OR REPRODUCED IN ANY WAY, AND MAY NOT BE PASSED ON TO A THIRD PARTY WITHOUT WRITTEN PERMISSION.
OWNERSHIP AND COPYRIGHT OF CONEC GmbH
DO NOT ALTER CAD DRAWING BY HAND

rev.	description	date	name

tolerance		scale:	2:1		
material:	dim. in mm	material:	SEE NOTES		
2003	date	name	title: D-SUB DUAL-PORT MALE / MALE 2x9pos. - 2x37pos. with 4-40 insert		
drawn	12.03.	Parei			
appd.	12.03.	Kühle			
norm					
d-old			dwg no:	AutoCAD 2000	DIN-A
			16K1A916	3	
			part no:	SEE TABLE	sh:1/1

Mouser Electronics

Authorized Distributor

Click to View Pricing, Inventory, Delivery & Lifecycle Information:

[CONEC:](#)

[DLS2PP5AN23X](#)