

6 5 4 3 2 1

D

C

B

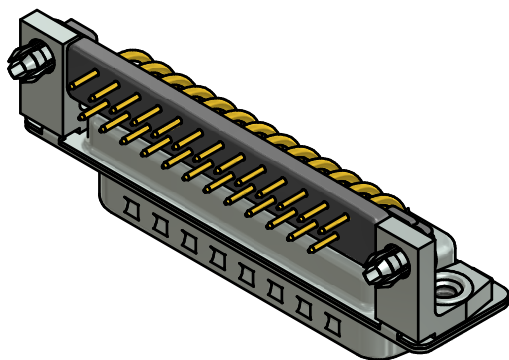
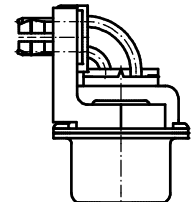
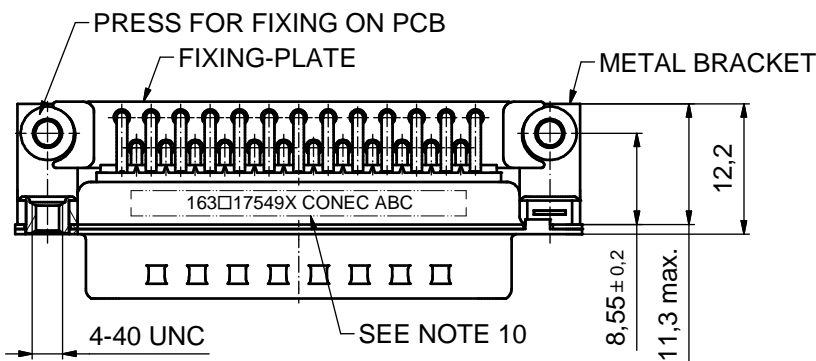
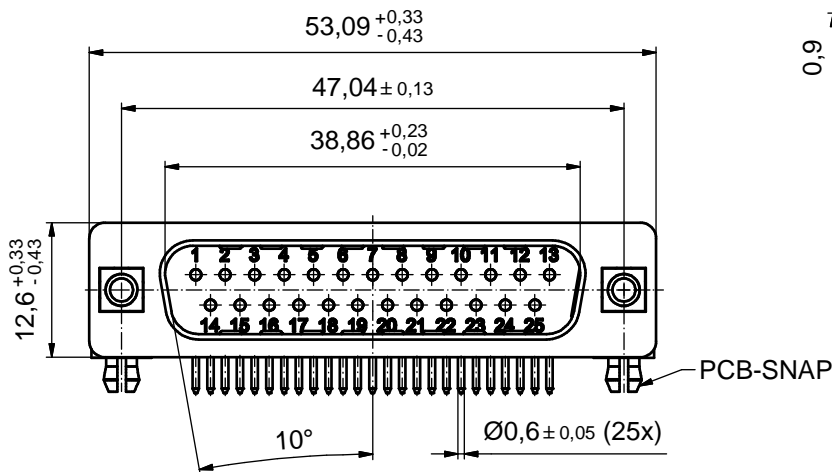
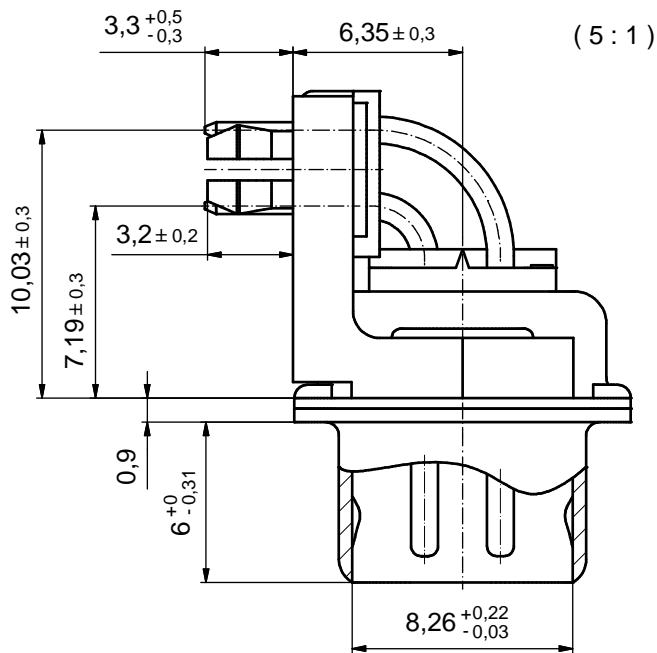
A

D

C

B

A



NOTES:

1. METALSHELLS: STEEL; min. 315µm TIN over 40-80µm NICKEL
2. INSULATORS: PBT GF UL 94 V-0, BLACK
3. SIGNAL CONTACTS: COPPER ALLOY; PLATING (SEE PART NO.):
 - (b) □ PLEASE ADD A for GOLD FLASH over NICKEL (PREFERRED TYPE)
 - PLEASE ADD B for 20µm HARD GOLD over min. 50µm NICKEL
 - PLEASE ADD C for 30µm HARD GOLD over min. 50µm NICKEL
 - PLEASE ADD J for 50µm HARD GOLD over min. 50µm NICKEL
4. METAL BRACKETS: ZINC DIE CAST; 300µm COPPER/40-120µm NICKEL/120-200µm TIN
5. THREADED INSERTS: COPPER ALLOY; min. 200µm TIN over 80µm NICKEL
6. PCB-SNAPS: COPPER ALLOY; min. 200µm TIN over 80µm NICKEL
PCB-HOLE: Ø3.1±0.1; PCB THICKNESS 1.6mm
7. FIXING-PLATE: PBT GF UL 94 V-0, BLACK
8. MAXIMUM TORQUE VALUE FOR THREAD: 6 in.LB
9. P.C.B. HOLE DRILLINGS ON SHEET 2
10. CONNECTOR IS PART MARKED: 163□17549X CONEC ABC (see note 3)

Directive 2002/95/EC RoHS compliant

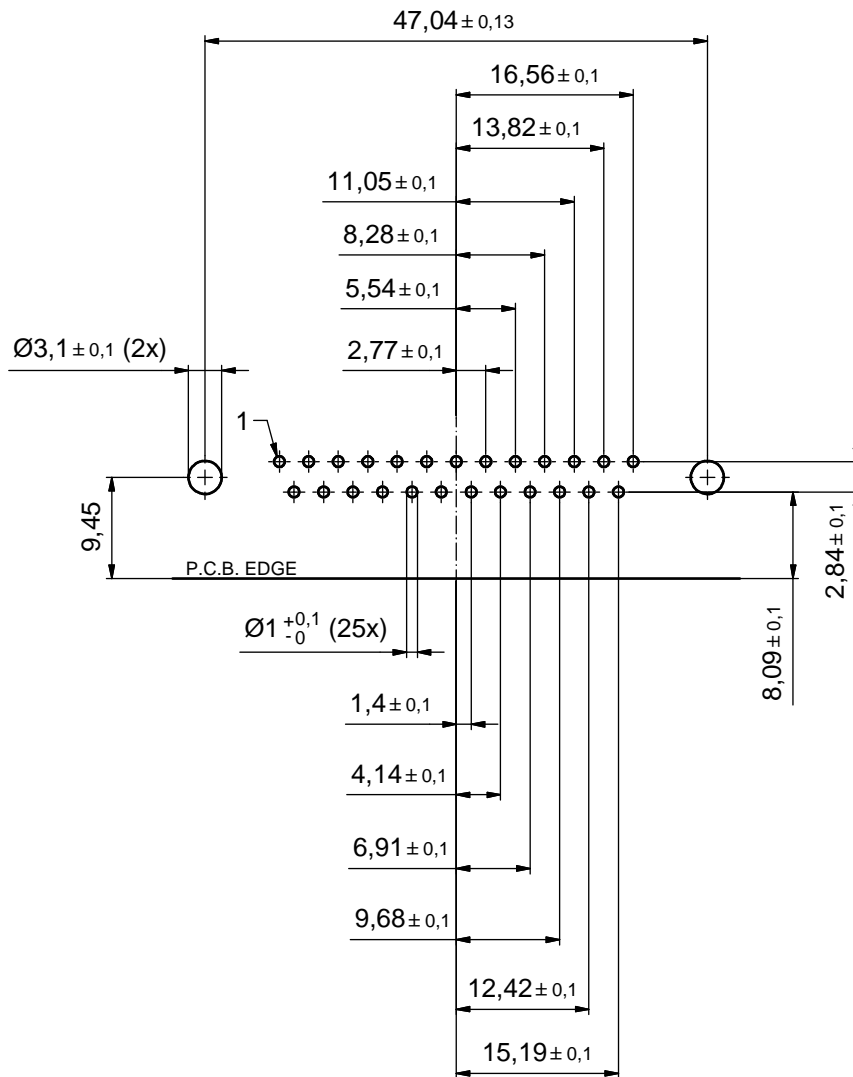
THIS DRAWING MAY NOT BE COPIED OR REPRODUCED IN ANY WAY, AND MAY NOT BE PASSED ON TO A THIRD PARTY WITHOUT WRITTEN PERMISSION. OWNERSHIP AND COPYRIGHT OF CONEC GmbH DO NOT ALTER CAD DRAWING BY HAND	tolerance		dim. in mm		scale: 2:1 (5:1)		
					material: SEE NOTES		
			date		title:		
			name		D-SUB MALE 90°		
			drawn 05.11.13 Henneboel		25pos. SOLDER PIN ANGLED 0.318inch threaded insert, metal bracket, fixing-plate, snap		
		appd. 05.11.13 Lehmenkühler		dwg no:			
		norm		16K1A022A/16K1A682/16K2A682			
		d-old		part no: (b) 16K1A3319			
3 x b		Ä4946		05.11.2013		K.H.	
a		Original					
rev.		description		date		name	
						(b) 163□17549X (see note 3)	
						DIN-A3 sh: 1/2	

6 5 4 3 2 1



P.C.B. HOLE DRILLINGS

(P.C.B. TOP SIDE)



THIS DRAWING MAY NOT BE COPIED OR REPRODUCED IN ANY WAY, AND MAY NOT BE PASSED ON TO A THIRD PARTY WITHOUT WRITTEN PERMISSION. OWNERSHIP AND COPYRIGHT OF CONEC GmbH DO NOT ALTER CAD DRAWING BY HAND				tolerance		scale: 2:1	
					dim. in mm	material: see sheet 1	
				date	name	title: P.C.B. HOLE DRILLINGS D-SUB MALE 90°25pos. solder pin angled threaded insert, metal bracket, fixing-plate, snap	
				drawn 05.11.13	Henneboel		
				appd. 05.11.13	Lehmenkühler		
				norm			
				d-old		dwg no:	
	a	Original		CONEC [®]		16K1A3319	DIN-A3
	rev.	description	date			name	part no: SEE SHEET 1

Mouser Electronics

Authorized Distributor

Click to View Pricing, Inventory, Delivery & Lifecycle Information:

[CONEC:](#)

[163C17549X](#)