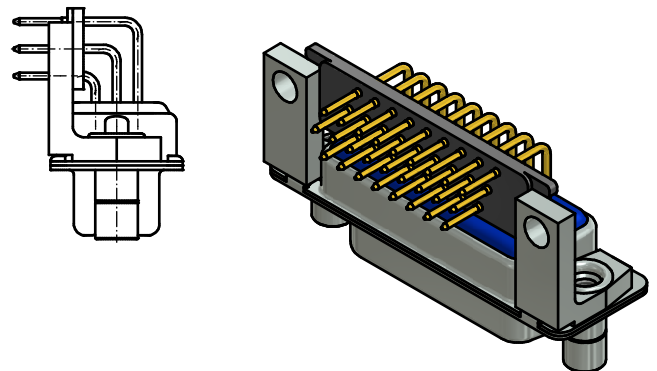
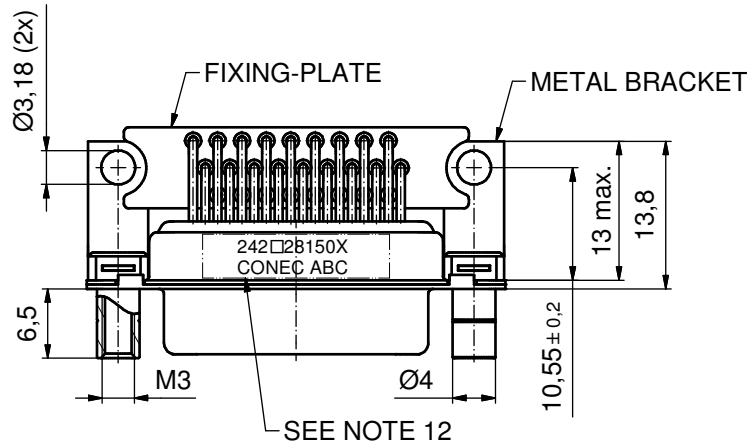
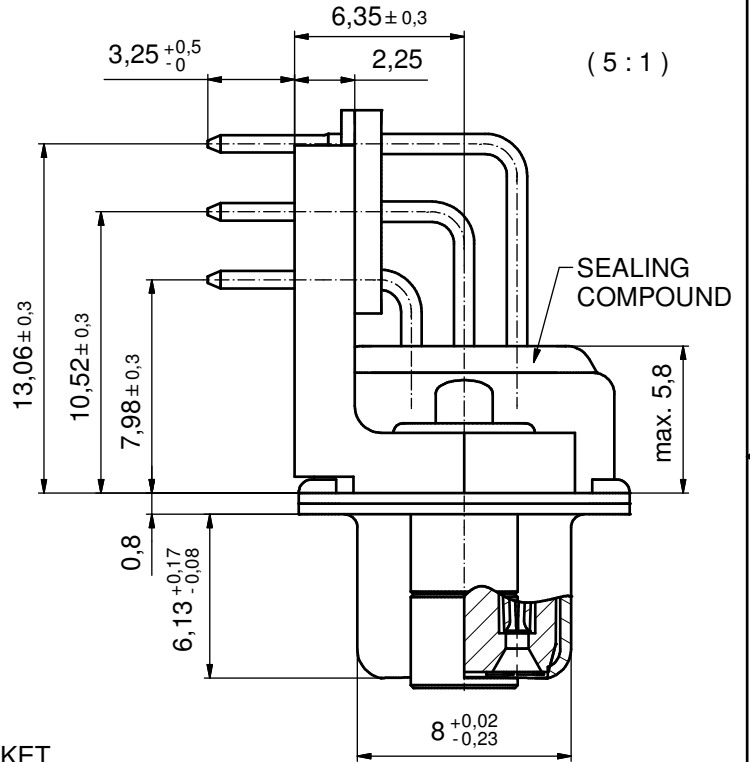
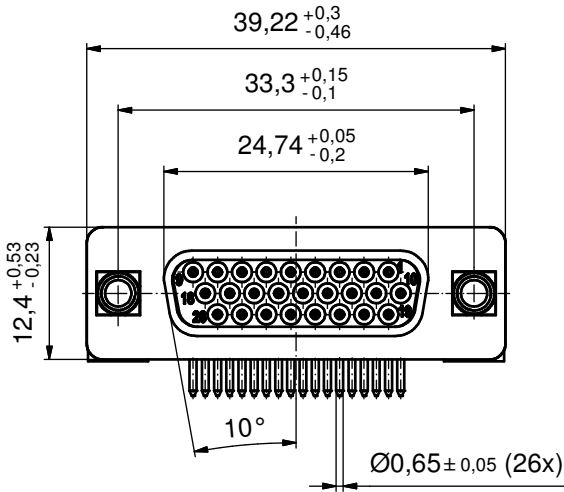
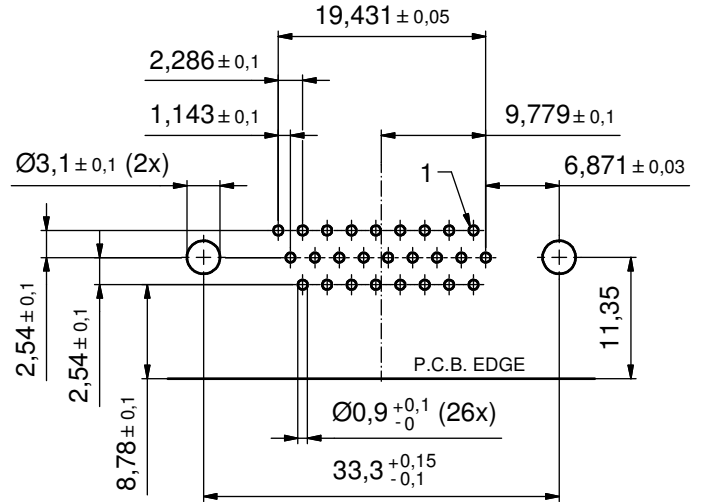


NOTES:

1. FOR WAVESOLDERING (SOLDER BATH TEMPERATURE 260°C FOR 5 SEC. AND SOLDER PREHEAT 100°C FOR 30 SEC.)
2. METALSHELLS: STEEL; min. 315µm TIN over 40-80µm NICKEL
3. SEALING COMPOUND: PUR; BLUE
4. INSULATORS: HIGH TEMPERATURE PLASTIC UL 94 V-0, BLACK
5. CONTACTS: COPPER ALLOY; PLATING (SEE PART NO.):
 - PLEASE ADD A for GOLD FLASH over NICKEL (PREFERRED TYPE)
 - PLEASE ADD B for 20µm HARD GOLD over min. 50µm NICKEL
 - PLEASE ADD C for 30µm HARD GOLD over min. 50µm NICKEL
6. METAL BRACKETS: ZINC DIE CAST;
 - 300µm COPPER/40-120µm NICKEL/120-200µm TIN
7. THREADED LOCKS: COPPER ALLOY; min. 200µm TIN over 80µm NICKEL
8. FIXING-PLATE: PBT GF UL 94 V-0, BLACK
9. CAPACITANCE: 180pF±20%
10. DIELECTRIC WITHSTANDING VOLTAGE: 300 VDC
11. MAXIMUM TORQUE VALUE FOR THREAD: 6 in.LB
12. CONNECTOR IS PART MARKED: 242□28150X CONEC ABC (see note 5)

P.C.B. HOLE DRILLINGS
(P.C.B. TOP SIDE)



Directive 2002/95/EC RoHS compliant

THIS DRAWING MAY NOT BE COPIED OR REPRODUCED IN ANY WAY, AND MAY NOT BE PASSED ON TO A THIRD PARTY WITHOUT WRITTEN PERMISSION. OWNERSHIP AND COPYRIGHT OF CONEC GmbH DO NOT ALTER CAD DRAWING BY HAND	tolerance		dim. in mm		scale:	2:1 (5:1)
					material:	SEE NOTES
	drawn	08.04.14	Henneboel		title:	
	appd.	09.04.14	Lehmenkühler			
	norm				D-SUB HD FILTER FEMALE 90° 26pos. 0.350inch. with threaded lock, metal bracket and fixing plate	
d-old						
a	Original			dwg no:	24K1A1513	DIN-A3
rev.	description	date	name	part no: 242□28150X		sh: 1

CONEC®

(see note 5)

Mouser Electronics

Authorized Distributor

Click to View Pricing, Inventory, Delivery & Lifecycle Information:

[CONEC:](#)

[242A28150X](#)