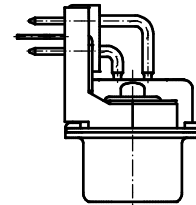
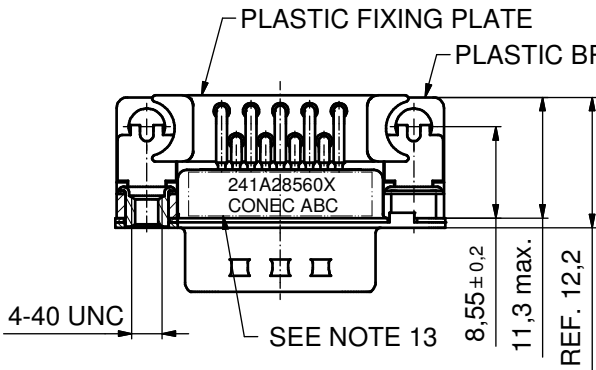
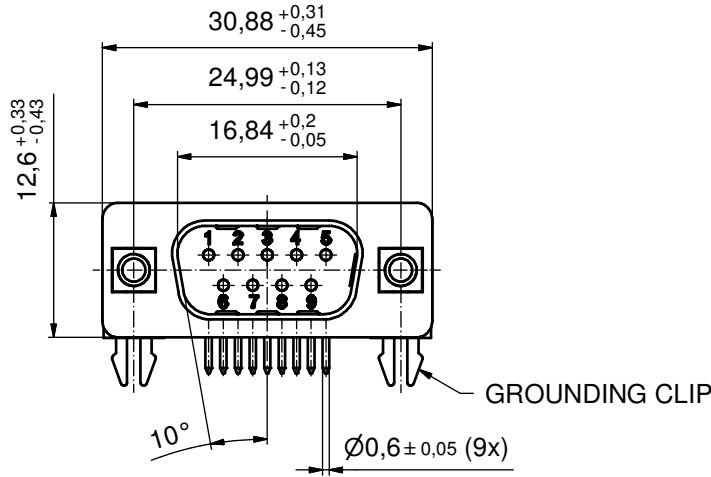
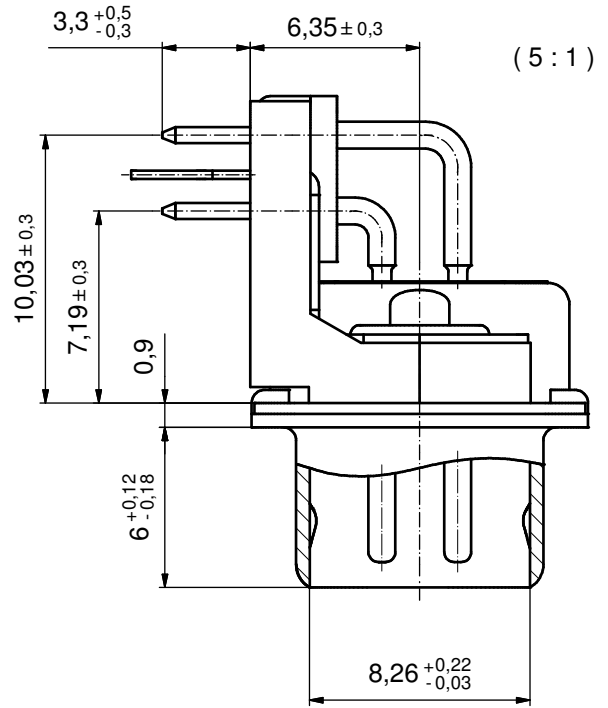


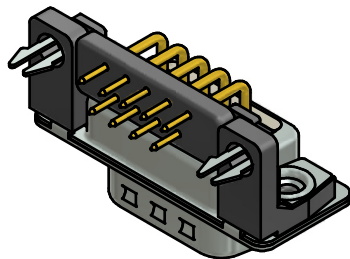
P.C.B. HOLE DRILLINGS (P.C.B. TOP SIDE)



NOTES:

1. RoHS COMPLIANT
2. FOR WAVESOLDERING (SOLDER BATH TEMPERATURE 260°C FOR 5 SEC. AND SOLDER PREHEAT 100°C FOR 30 SEC.)
3. METALSHELLS: STEEL; min. 315µin TIN over 40-80µin NICKEL
4. INSULATORS: HIGH TEMPERATURE PLASTIC UL 94 V-0, BLACK
5. CONTACTS: COPPER ALLOY  
PLATING: GOLD FLASH over NICKEL
6. MOUNTING BRACKET: HIGH TEMPERATURE PLASTIC UL 94 V-0; BLACK
7. FIXING PLATE: HIGH TEMPERATURE PLASTIC UL 94 V-0; BLACK
8. THREADED INSERTS: COPPER ALLOY; min. 200µin TIN over 80µin NICKEL
9. GROUNDING-CLIPS: COPPER ALLOY  
PCB-HOLE: ø3,1±0,1; PCB THICKNESS 1,6mm
10. CAPACITANCE: 1300pF±20%
11. DIELECTRIC WITHSTANDING VOLTAGE: 424 VDC
12. MAXIMUM TORQUE VALUE FOR THREAD: 6 in.LB
13. CONNECTOR IS PART MARKED: 241A28560X CONEC ABC

Directive 2002/95/EC  
 "RoHS"  
 Compliant



|   |        |
|---|--------|
| APPROVAL # FREIGABE # DEBLOCAGE # AUTORIZACION # APPROVAL |        |
| CUSTOMER APPROVAL DATE:                                   |        |
| NAME:   | TITLE: |
| COMPANY NAME:   |        |
| APPROVAL # FREIGABE # DEBLOCAGE # AUTORIZACION # APPROVAL |        |

|   |             |      |      |
|---|-------------|------|------|
| THIS DRAWING MAY NOT BE COPIED OR REPRODUCED IN ANY WAY, AND MAY NOT BE PASSED ON TO A THIRD PARTY WITHOUT WRITTEN PERMISSION. OWNERSHIP AND COPYRIGHT OF CONEC GmbH DO NOT ALTER CAD DRAWING BY HAND |             |      |      |
| rev.  | description | date | name |
| a   | Origin      |      |      |

|                |                    |
|----------------|--------------------|
| tolerance      | dim. in mm         |
| date           | name               |
| drawn          | 08.11.10 Henneboel |
| appd.          | 08.11.10 Fischer   |
| norm           |                    |
| d-old          |                    |
| <b>CONEC</b> ® |                    |

|           |   |        |
|-----------|---|--------|
| scale:    | 2:1 (5:1)   |        |
| material: | SEE NOTES   |        |
| title:    | D-SUB FILTER MALE 90°<br>9pos. SOLDER PIN ANGLED 0.318inch<br>threaded insert, mounting bracket, grounding clip |        |
| dwg no:   | Inventor 10   | DIN-A3 |
|           | 24K1A1278   | sh: 1  |
| part no:  | 241A28560X  |        |

# Mouser Electronics

Authorized Distributor

Click to View Pricing, Inventory, Delivery & Lifecycle Information:

[CONEC:](#)

[241A28560X](#)