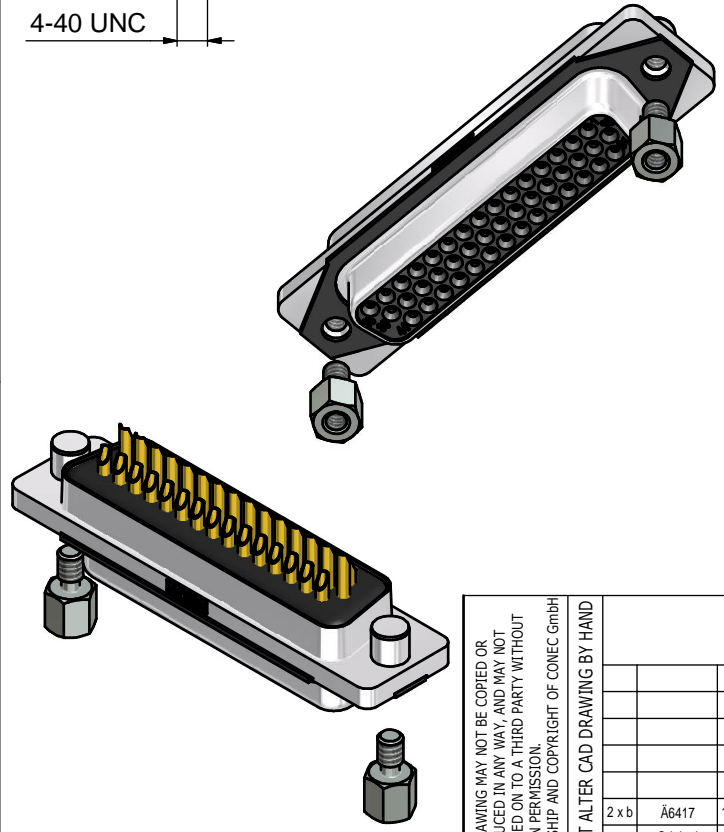
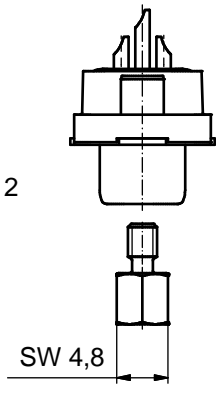
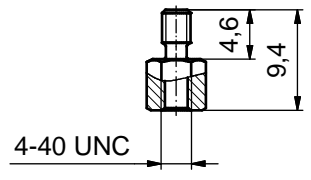
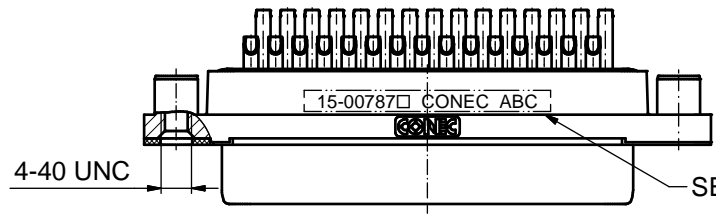
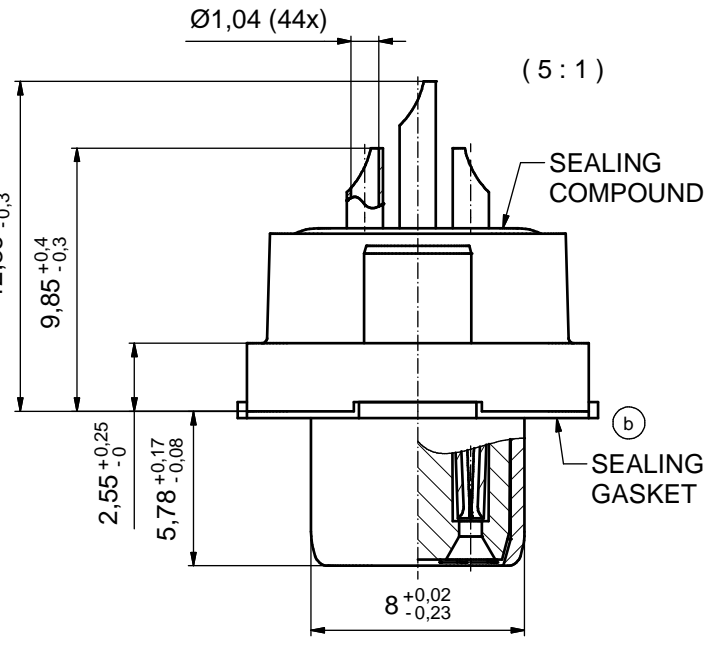
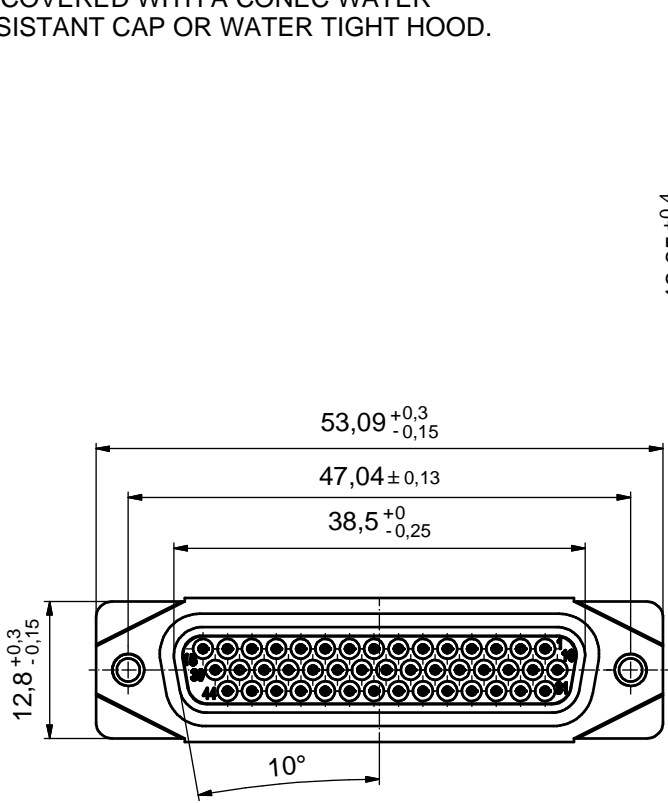


AT ALL TIMES WATER RESISTANT CONNECTORS NOT IN USE SHOULD BE COVERED WITH A CONEC WATER RESISTANT CAP OR WATER TIGHT HOOD.



- (b) NOTES:
1. RECOMMENDED SOLDER INSTRUCTION SEE SHEET 2
 2. IP RATING: IP 67
 3. SEALED TO WITHSTAND PRESSURE UP TO 1,45 PSI FOR 30 MINUTES AFTER SOLDERING
 4. METALSHIELD: ZINC DIE CAST; min. 50µm NICKEL PLATING over COPPER
 5. INSULATORS: PBT GF UL 94 V-0
 6. SEALING GASKET: SILICONE
 7. SEALING COMPOUND: EPOXY
 8. CONTACTS: COPPER ALLOY; PLATING (SEE PART-NO.):
 PLEASE ADD 1 for 30µm HARD GOLD over min. 50µm NICKEL
 PLEASE ADD 3 for GOLD FLASH over NICKEL
 SOLDER CUP ACCEPTS CABLE AWG 22
 9. HEXLOCKING SCREWS: STAINLESS STEEL
 10. RECOMMENDED PANEL CUT-OUT ON SHEET 2
 11. RECOMMENDED TORQUE FOR MOUNTING SCREW
 35Ncm (3.1 in.LB) / max. 67Ncm (6 in.LB)
 12. CONNECTOR IS PART MARKED: 15-00787 CONEC ABC (see note 8)

tolerance				dim. in mm		scale: 2:1 (5:1)	
						material: SEE NOTES	
date				name		title:	
						D-SUB FEMALE HD 44pos. SOLDER CUP with closed 4-40 UNC thread	
drawn 22.09.2015				Heinrich		dwg no:	
appd. 23.09.2015				Fischer			
norm				d-old		15K1A1676	
2 x b Ä6417 13.04.2017 Unkrüer				CONEC®		DIN-A3	
a Original						sh: 1	
rev. description date name						part no: 15-00787 (see note 8)	

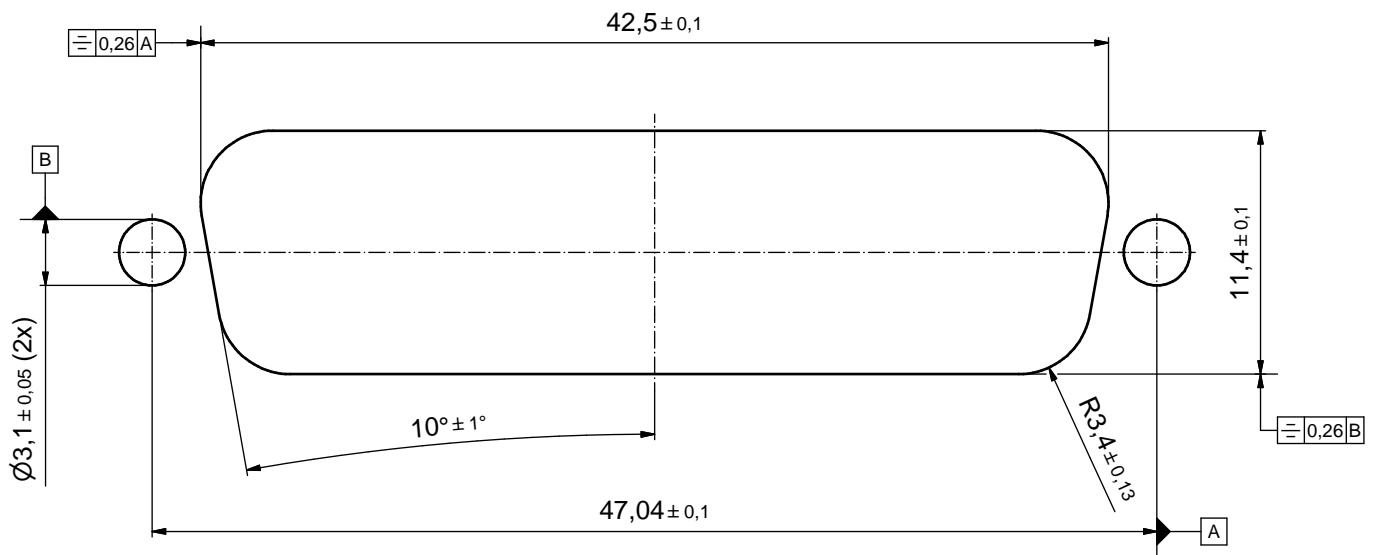
THIS DRAWING MAY NOT BE COPIED OR REPRODUCED IN ANY WAY, AND MAY NOT BE PASSED ON TO A THIRD PARTY WITHOUT WRITTEN PERMISSION. OWNERSHIP AND COPYRIGHT OF CONEC GmbH DO NOT ALTER CAD DRAWING BY HAND

RoHS compliant

Solder Instruction

1. Cable should be prepared for soldering. The cable/wires must be pretinned.
2. Insert cable/wire into solder cup.
3. Operate the soldering iron at 350°C, 50 Watt max. and use a pencil tip.
4. Apply some solder to the solder tip of the soldering iron.
5. Put tip to wire in solder cup.
6. After 1 second bring in solder.
7. Heat for 3 seconds longer. Do not heat contact more than 4 seconds in total.
8. Remove soldering iron.
9. Wait until solder gets rigid again.
10. Do not solder adjacent contacts consecutively, alternate position within the connector to minimize heat build up.

RECOMMENDED PANEL CUT-OUT



THIS DRAWING MAY NOT BE COPIED OR REPRODUCED IN ANY WAY, AND MAY NOT BE PASSED ON TO A THIRD PARTY WITHOUT WRITTEN PERMISSION. OWNERSHIP AND COPYRIGHT OF CONEC GmbH DO NOT ALTER CAD DRAWING BY HAND				tolerance		scale: 4:1
				date	name	material: SEE SHEET 1
				drawn	22.09.2015	Heinrich
				appd.	23.09.2015	Fischer
				norm		
				d-old		
rev.	description	date	name	CONEC [®]		title: RECOMMENDED PANEL CUT-OUT D-SUB FEMALE HD 44pos. SOLDER CUP with closed 4-40 UNC thread
a	Original					dwg no: 15K1A1676
						part no: SEE SHEET 1

Mouser Electronics

Authorized Distributor

Click to View Pricing, Inventory, Delivery & Lifecycle Information:

[CONEC:](#)

[15-007873](#)