

**Technical specification:**

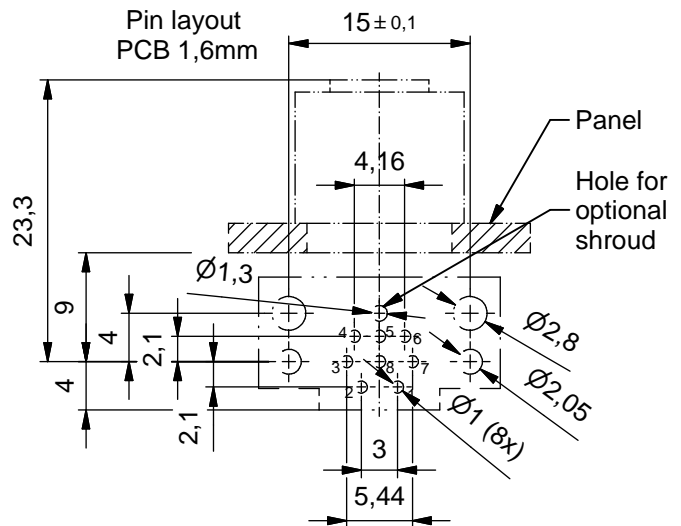
Rated voltage:	30 V
IEC 61076-2-101	
Current rating:	2 A at 40°C
IEC 61076-2-101	
Insulation resistance:	>=100 MΩ
IEC 60512	
Pollution degree:	3/2
IEC 60664-1	
Degree of protection:	IP 67, in mated condition
IEC 60529	
Temperature range:	-30°C ... +85°C
EN 60512-11-10	-40°C
EN 60512-11-4	-40°C ... +85°C
Mating cycles:	>=100
IEC 60512-9a	

**Materials:**

Contact:	CuZn, Ni b / Au 0,2 gal.
Contact carrier:	PA, UL 94 V-0
Sealing:	FPM
Socket housing:	CuZn, nickel plated
Shroud:	CuSn6 / Sn

**Installation specification:**

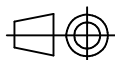
Recommended torque:	0,8-1 Nm
Conec installation tool:	Torque wrench: 36-000200 Insert across flats 15: 36-000320
Installation hole:	see fig.1 43K1A1791



Part no:	Description:	Pos	Note:
43-02638	SAL - 12 - FKW8	8	
43-02639	SAL - 12S - FKW8	8	with shroud

DO NOT ALTER CAD DRAWING BY HAND

RoHS & REACH compliant



dim. in mm

	date	name
drawn	06.08.15	Böckeler
appd.	06.08.15	Franz



title:	Female socket M12x1 angled, frontmounting, dip solder
dwg no:	43K1A3060
part no:	see table

general tolerance:	0 ± 0,50mm
	0,0 ± 0,25mm
	0,00 ± 0,10mm
*	± 1,5°

THIS DRAWING MAY NOT BE COPIED OR REPRODUCED IN ANY WAY, AND MAY NOT BE PASSED ON TO A THIRD PARTY WITHOUT WRITTEN PERMISSION. OWNERSHIP AND COPYRIGHT OF CONEC GmbH

# Mouser Electronics

Authorized Distributor

Click to View Pricing, Inventory, Delivery & Lifecycle Information:

[CONEC:](#)

[43-02638](#)