

Technical specification:

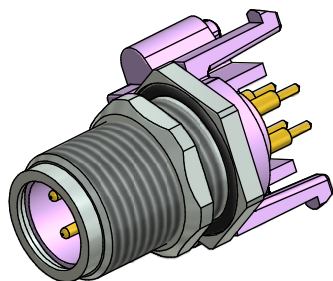
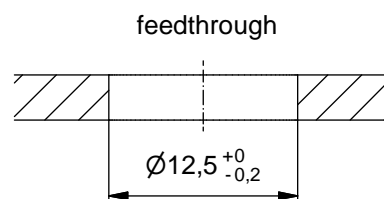
Rated voltage: IEC 61076-2-101	250 V
Current rating: IEC 61076-2-101	4 A at 40°C
Insulation resistance: IEC 60512	>=100 MΩ
Pollution degree: IEC 60664-1	3/2
Degree of protection: IEC 60529	IP 67, in mated condition
Temperature range: EN 60512-11-10 EN 60512-11-4	-30°C ... +85°C -40°C -40°C ... +85°C
Mating cycles: IEC 60512-9a	>=100

Materials:

Contact:	CuZn, Ni b / Au 0,2 gal.
Contact carrier:	PA 6.6, UL 94 V-0
Sealing:	FPM
Socket housing:	CuZn, nickel plated
Shroud:	spring steel, nickel plated

Installation specification:

recommended torque:	0,8-1 Nm
Conec installation tool:	Torque wrench: 36-000200 Insert across flats 14: 36-000370 Insert across flats 15: 36-000320



Part no:	Description:	Pos	Note:
43-01215	SAL - 12B - FSH4 - X10	4	with shroud

DO NOT ALTER CAD DRAWING BY HAND RoHS & REACH compliant	Index: c 21.08.13 MG Ä4884 Data sheet revised, width across flats of the counter nut changed, installation specification added
	general tolerance: 0 ± 0,50mm 0,0 ± 0,25mm 0,00 ± 0,10mm * ± 1,5°
	THIS DRAWING MAY NOT BE COPIED OR REPRODUCED IN ANY WAY, AND MAY NOT BE PASSED ON TO A THIRD PARTY WITHOUT WRITTEN PERMISSION. OWNERSHIP AND COPYRIGHT OF CONEC GmbH

dim. in mm	
drawn	date
09.10.07	Fromm
appd.	name
18.10.07	W. Schmidt
CONEC®	

title: Male Socket M12x1 axial, backmounting, Profibus DP, dip solder, X10
dwg no: 43K1A529
part no:

Mouser Electronics

Authorized Distributor

Click to View Pricing, Inventory, Delivery & Lifecycle Information:

[CONEC:](#)

[43-01215](#)