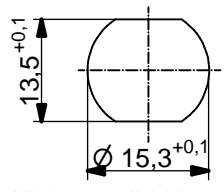
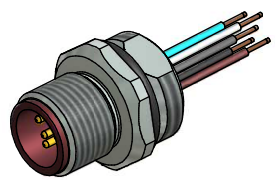


**Contact assignment:**

- 1 ■ brown
- 2 ■ white
- 3 ■ blue
- 4 ■ black
- 5 ■ grey



Minimum wall thickness 1,5mm,  
alternativ panel cut-out d=15,3

**Technical specification:**

|                                     |  |
|-------------------------------------|--|
| Rated voltage:<br>IEC 61076-2-101   | 60 V   |
| Current rating:<br>IEC 61076-2-101  | 4 A at 40°C  |
| Insulation resistance:<br>IEC 60512 | >=100 MΩ   |
| Pollution degree:<br>IEC 60664-1    | 3/2  |
| Degree of protection:<br>IEC 60529  | IP 67, in mated condition                              |
| Temperature range:<br>IEC 60664-1   | +100°C - 30.000h<br>+125°C - 8.000h<br>+150°C - 2.000h |
| Mating cycles:<br>IEC 60512-9a      | >=100  |

**Materials:**

|                  |                           |
|------------------|---------------------------|
| Contact:         | CuZn                      |
| Contact plating: | Nickel, gold plated       |
| Contact carrier: | PBT GF, UL 94             |
| Sealing:         | FPM                       |
| Socket housing:  | CuZn, nickel plated       |
| Grouting:        | Polyurethane-resin, UL 94 |

**Installation specification:**

|                          |   |
|--------------------------|---|
| recommended torque:      | 1-1,2 Nm  |
| Conec installation tool: | Torque wrench:<br>36-000200<br>Insert across flats 17:<br>36-000230 |

| Part no: | Description:                    | Pos | Length L: | Wire:                 |
|----------|---------------------------------|-----|-----------|-----------------------|
| 43-01086 | SAL - HT - 12 - FS5.1 - 0,5 - 9 | 5   | 0,5m      | Copolymer, UL, AWG 24 |
| 43-xxxxx | SAL - HT - 12 - FS5.1 - ... - 9 | 5   | x         |                       |

DO NOT ALTER CAD DRAWING BY HAND  
Directive 2002/95/EC RoHS compliant

Index: b 02.09.10 fro Ä3696  
specification of wires changed, data sheet revised

tolerance of wire: L ≤ 0,5m: L + 20mm  
L > 0,5m: L + 4%

THIS DRAWING MAY NOT BE COPIED OR REPRODUCED IN ANY WAY, AND MAY NOT BE PASSED ON TO A THIRD PARTY WITHOUT WRITTEN PERMISSION.  
OWNERSHIP AND COPYRIGHT OF CONEC GmbH

dim. in mm

|       | date     | name    |
|-------|----------|---------|
| drawn | 01.03.07 | Fromm   |
| appd. | 01.03.07 | Mankopf |

**CONEC**®

title:  
**Male socket M12x1 with wires, frontmounting, HT, PG9**

dwg no:  
**43K1A330**

part no:

# Mouser Electronics

Authorized Distributor

Click to View Pricing, Inventory, Delivery & Lifecycle Information:

[CONEC:](#)

[43-01086](#)