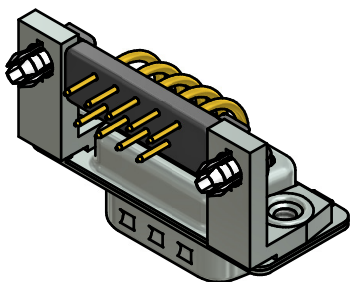


SEE NOTE 9



NOTES:

- METALSHELLS: STEEL; min. $315\mu\text{m}$ TIN over $40-80\mu\text{m}$ NICKEL
- INSULATORS: PBT GF UL 94 V-0, BLACK
- CONTACTS: COPPER ALLOY; PLATING (SEE PART NO.):
 - (b) □ PLEASE ADD A for GOLD FLASH over NICKEL (PREFERRED TYPE)
 - PLEASE ADD B for $20\mu\text{m}$ HARD GOLD over min. $50\mu\text{m}$ NICKEL
 - PLEASE ADD C for $30\mu\text{m}$ HARD GOLD over min. $50\mu\text{m}$ NICKEL
 - PLEASE ADD J for $50\mu\text{m}$ HARD GOLD over min. $50\mu\text{m}$ NICKEL
- METAL BRACKETS: ZINC DIE CAST; $300\mu\text{m}$ COPPER/ $40-120\mu\text{m}$ NICKEL/ $120-200\mu\text{m}$ TIN
- THREADED INSERTS: COPPER ALLOY; min. $200\mu\text{m}$ TIN over $80\mu\text{m}$ NICKEL
- PCB-SNAPS: COPPER ALLOY; min. $200\mu\text{m}$ TIN over $80\mu\text{m}$ NICKEL
PCB-HOLE: $\varnothing 3,1 \pm 0,1$; PCB THICKNESS 1.6mm
- FIXING-PLATE: PBT GF UL 94 V-0, BLACK
- MAXIMUM TORQUE VALUE FOR THREAD: 6 in.LB
- CONNECTOR IS PART MARKED: 163□16359X CONEC ABC (see note 3)

RoHS compliant

THIS DRAWING MAY NOT BE COPIED OR REPRODUCED IN ANY WAY, AND MAY NOT BE PASSED ON TO A THIRD PARTY WITHOUT WRITTEN PERMISSION. OWNERSHIP AND COPYRIGHT OF CONEC GmbH DO NOT ALTER CAD DRAWING BY HAND	tolerance		dim. in mm		scale: 2:1 (5:1)
					material: SEE NOTES
	date	name		title:	
	drawn 13.04.06	Lehmenkühler		D-SUB MALE 90° 9pos. SOLDER PIN ANGLED 0.370inch. threaded insert, metal bracket, fixing-plate, snap	
	appd. 18.04.06	Mickenbecker			
norm	d-old 16K2A1804/16K3A1804		dwg no:		
3 x b	A5574	17.03.2015	K.H.	16K1A1804 part no: (b) 163□16359X (see note 3)	
rev.	description	date	name		

DIN-A3
sh: 1

Mouser Electronics

Authorized Distributor

Click to View Pricing, Inventory, Delivery & Lifecycle Information:

[CONEC:](#)

[163A16359X](#)