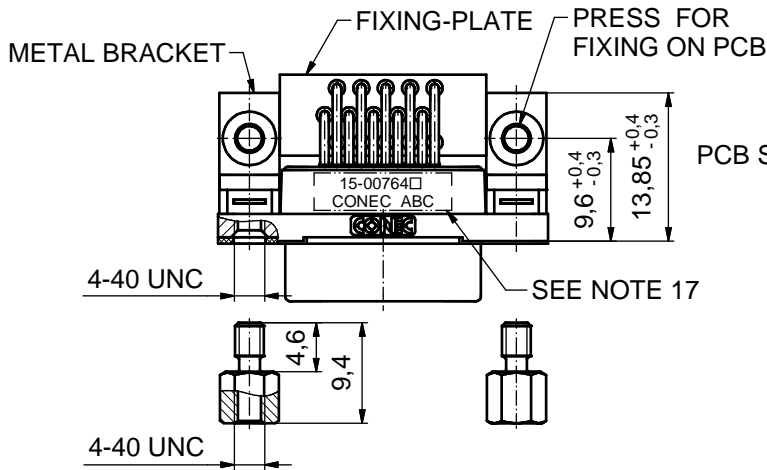
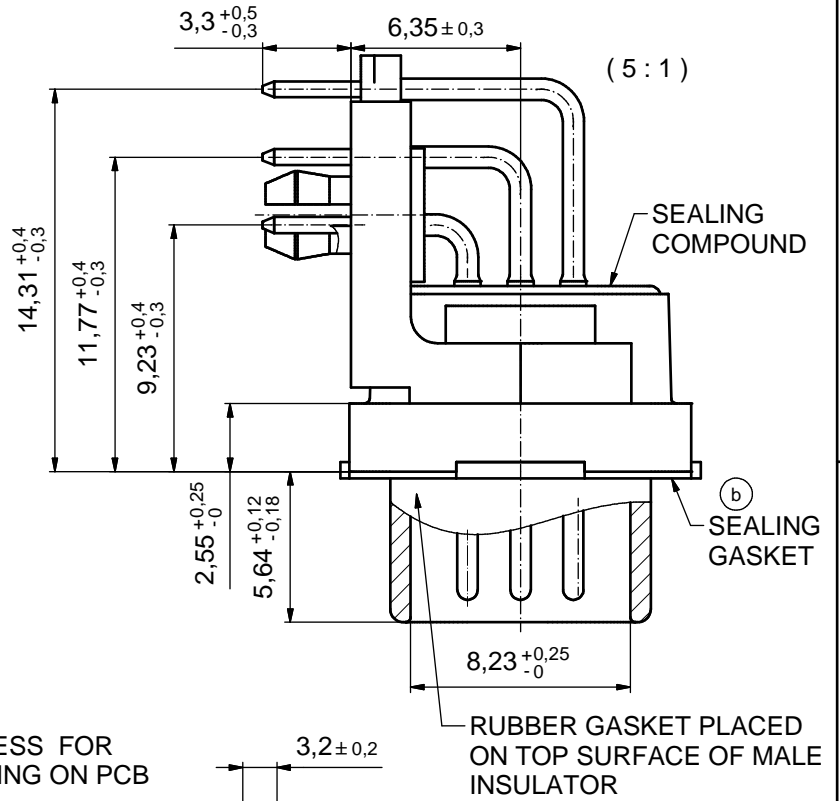
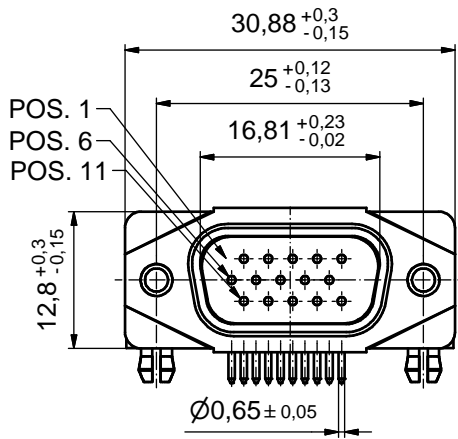
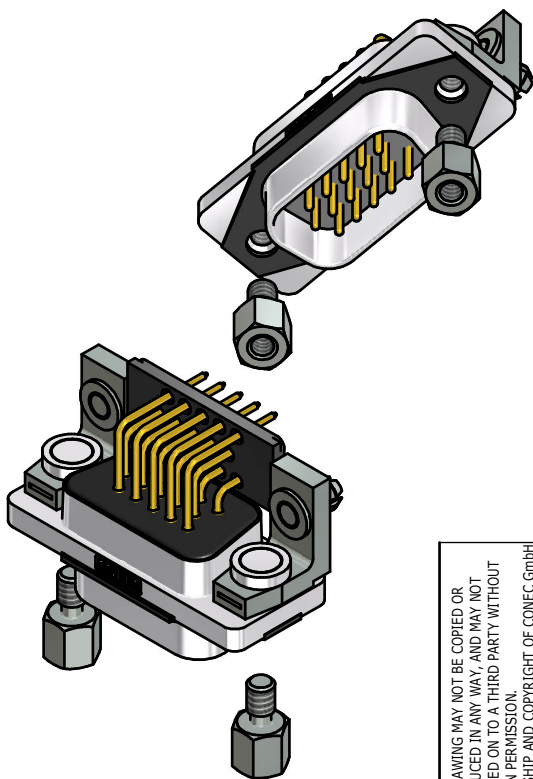


AT ALL TIMES WATER RESISTANT CONNECTORS NOT IN USE SHOULD BE COVERED WITH A CONEC WATER RESISTANT CAP OR WATER TIGHT HOOD.



(b) NOTES:

1. FOR WAVESOLDERING (SOLDER BATH TEMPERATURE 265°C FOR 8 SEC. AND SOLDER PREHEAT 150°C FOR 180 SEC.)
2. IP RATING: IP 67
3. SEALED TO WITHSTAND PRESSURE UP TO 1,45 PSI FOR 30 MINUTES AFTER HIGH TEMPERATURE EXPOSURE
4. METAL SHELL: ZINC DIE CAST; min. 50µm NICKEL PLATING over COPPER
5. INSULATORS: PBT GF UL 94 V-0
6. SEALING GASKET: SILICONE
7. RUBBER GASKET: TPE
8. SEALING COMPOUND: EPOXY
9. CONTACTS: COPPER ALLOY PLATING (SEE PART NO.):
 - PLEASE ADD 1 for 30µm HARD GOLD over min. 50µm NICKEL
 - PLEASE ADD 3 for GOLD FLASH over NICKEL
10. METAL BRACKETS: ZINC DIE CAST; 300µm COPPER/40-120µm NICKEL/120-200µm TIN
11. WASHERS: COPPER ALLOY; 80µm NICKEL
12. HEXLOCKING SCREWS: STAINLESS STEEL
13. PCB-SNAPS: COPPER ALLOY; min. 200µm TIN over 80µm NICKEL
PCB-HOLE: $\varnothing 3,1 \pm 0,1$ mm; PCB THICKNESS 1,6mm
14. FIXING-PLATE: PBT GF UL 94 V-0; BLACK
15. P.C.B. HOLE DRILLINGS and RECOMMENDED PANEL CUT-OUT ON SHEET 2
16. RECOMMENDED TORQUE FOR MOUNTING SCREW 35Ncm (3.1 in.LB) / max. 67Ncm (6 in.LB)
17. CONNECTOR IS PART MARKED: 15-00764 CONEC ABC (see note 9)



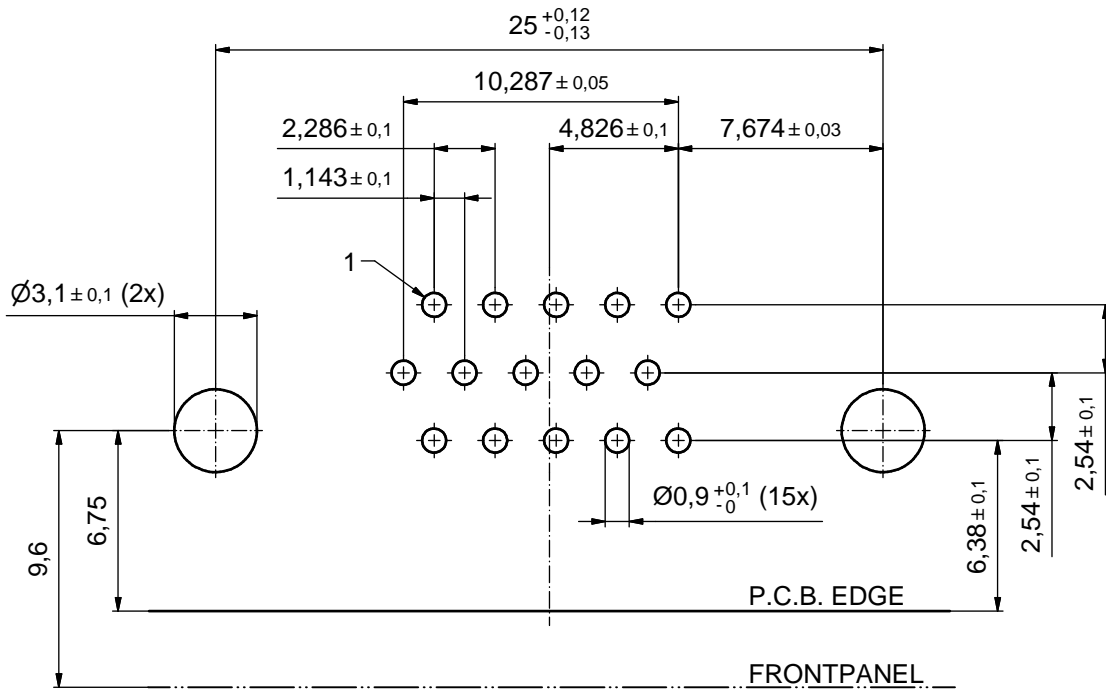
RoHS compliant

| | | | | | | | | | |
|--|--|----------------------------------|--|------------------|--|------------|---------------------|---|--|
| THIS DRAWING MAY NOT BE COPIED OR REPRODUCED IN ANY WAY, AND MAY NOT BE PASSED ON TO A THIRD PARTY WITHOUT WRITTEN PERMISSION. OWNERSHIP AND COPYRIGHT OF CONEC GmbH | | DO NOT ALTER CAD DRAWING BY HAND | | tolerance | | dim. in mm | scale: 2:1 (5:1) | | |
| | | | | | | | material: SEE NOTES | | |
| | | | | date | | name | | title: | |
| | | | | drawn 12.01.2016 | | Heinrich | | D-SUB MALE 90° HD 15pos. SOLDER PIN ANGLED with closed 4-40 UNC thread, metal bracket, fixing-plate, snap | |
| | | | | appd. 13.01.2016 | | Fischer | | | |
| | | | | norm | | | | | |
| | | | | d-old | | | | dwg no: | |
| 2 x b | | Ä6417 | | 06.04.2017 | | Unkrüer | | 15K1A1689 | |
| a | | Original | | | | | | DIN-A3 | |
| rev. | | description | | date | | name | | sh: 1 | |
| | | | | | | | | part no: 15-00764 (see note 9) | |

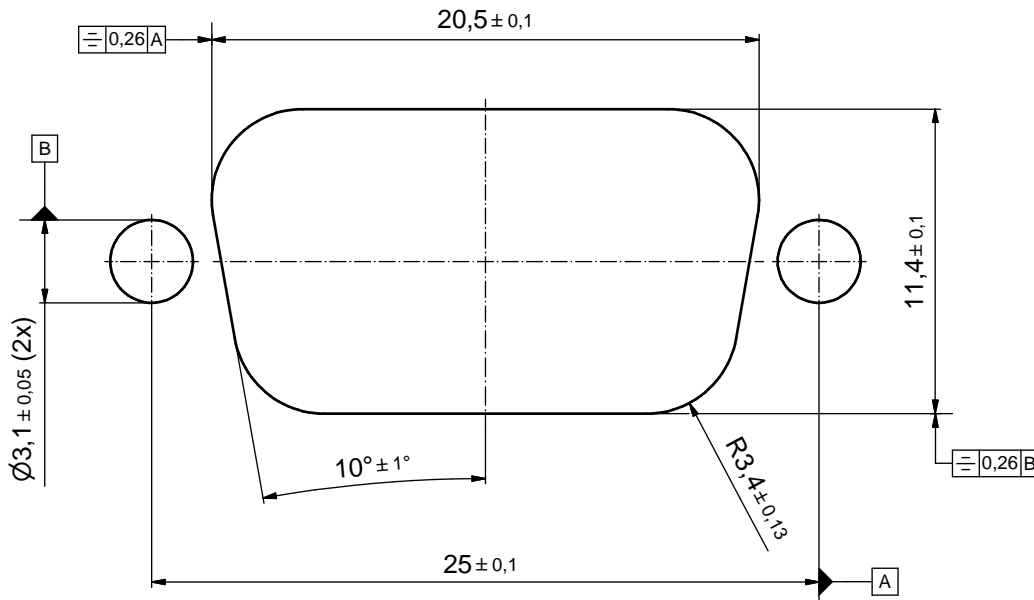


P.C.B. HOLE DRILLINGS

(P.C.B. TOP SIDE)



RECOMMENDED PANEL CUT-OUT



| | | | | | | |
|--|-------------|------|------|---------------------------|------------|--|
| THIS DRAWING MAY NOT BE COPIED OR REPRODUCED IN ANY WAY, AND MAY NOT BE PASSED ON TO A THIRD PARTY WITHOUT WRITTEN PERMISSION. OWNERSHIP AND COPYRIGHT OF CONEC GmbH DO NOT ALTER CAD DRAWING BY HAND | | | | tolerance | | scale: 5:1 |
| | | | | | dim. in mm | material: SEE SHEET 1 |
| | | | | date | name | title: P.C.B. HOLE DRILLINGS RECOMMENDED PANEL CUT-OUT D-SUB Male 90° HD 15pos. Solder pin angled |
| | | | | drawn 12.01.2016 | Heinrich | |
| | | | | appd. 13.01.2016 | Fischer | |
| | | | | norm | | dwg no: |
| | | | | d-old | | DIN-A3 |
| rev. | description | date | name | CONEC [®] | | sh: 2 |
| a | Original | | | 15K1A1689 | | |
| part no: SEE SHEET 1 | | | | | | |

Mouser Electronics

Authorized Distributor

Click to View Pricing, Inventory, Delivery & Lifecycle Information:

[CONEC:](#)

[15-007643](#)