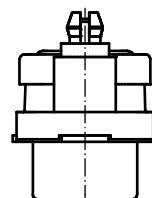
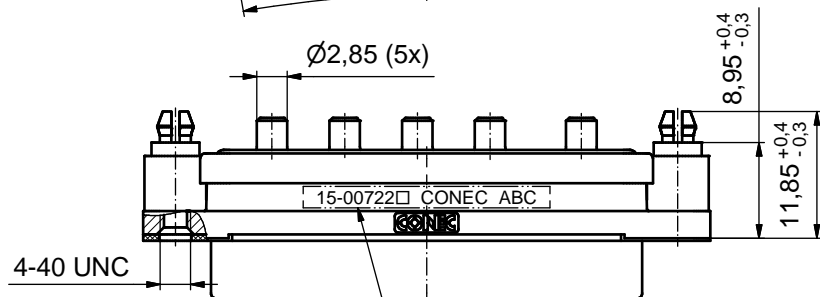
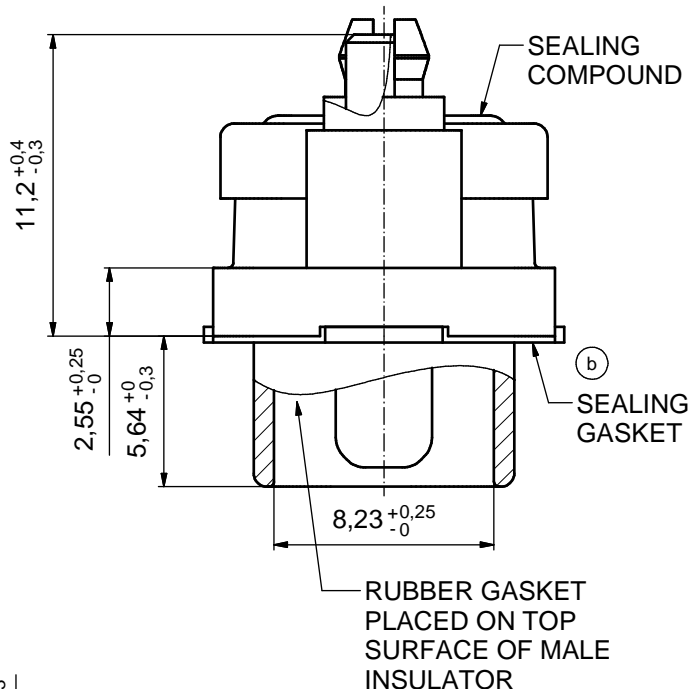
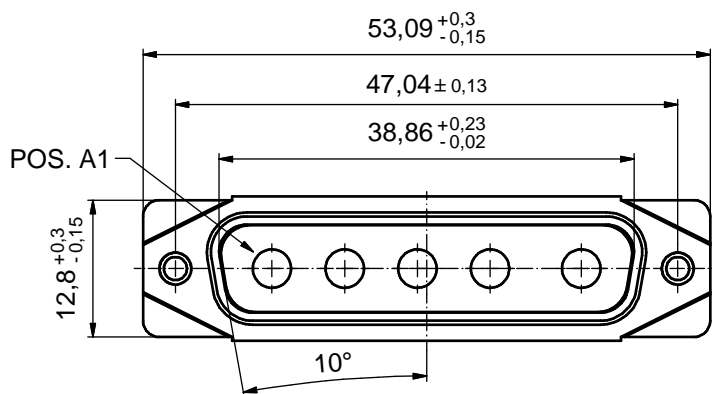


AT ALL TIMES WATER RESISTANT CONNECTORS NOT IN USE SHOULD BE COVERED WITH A CONEC WATER RESISTANT CAP OR WATER TIGHT HOOD.

(5:1)

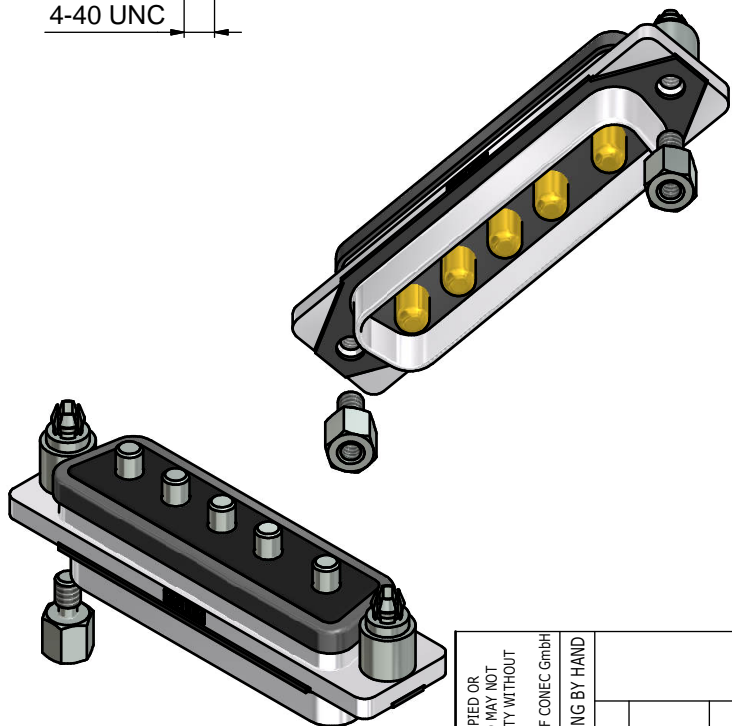


SEE NOTE 15

(b)

NOTES:

1. FOR WAVESOLDERING (SOLDER BATH TEMPERATURE 265°C FOR 8 SEC. AND SOLDER PREHEAT 150°C FOR 180 SEC.)
2. IP RATING: IP 67
3. SEALED TO WITHSTAND PRESSURE UP TO 1,45 PSI FOR 30 MINUTES AFTER SOLDERING
4. METAL SHELL: ZINC DIE CAST; min. 50µm NICKEL PLATING over COPPER
5. INSULATOR: PBT GF UL 94 V-0
6. EXTENSION: HIGH TEMPERATURE PLASTIC UL 94-V0
7. SEALING GASKET: SILICONE
8. SEALING COMPOUND: EPOXY
9. RUBBER GASKET: TPE
10. HIGH POWER CONTACTS 20A: COPPER ALLOY PLATING, MATING SIDE (SEE PART NO.):
 PLEASE ADD 1 for 30µm HARD GOLD over min. 50µm NICKEL
 PLEASE ADD 3 for GOLD FLASH over NICKEL PLATING, TERMINATION SIDE: 160-240µm TIN over min. 80µm NICKEL
11. REAR SPACER CLIPS: COPPER ALLOY; min. 200µm TIN over 80µm NICKEL PCB-HOLE: $\varnothing 3.1 \pm 0.1$; PCB-THICKNESS 1.6mm
12. HEXLOCKING SCREWS: STAINLESS STEEL
13. P.C.B. HOLE DRILLINGS and RECOMMENDED PANEL CUT-OUT ON SHEET 2
14. RECOMMENDED TORQUE FOR MOUNTING SCREW 35Ncm (3.1 in.LB) / max. 67Ncm (6 in.LB)
15. CONNECTOR IS PART MARKED: 15-00722 CONEC ABC (see note 10)



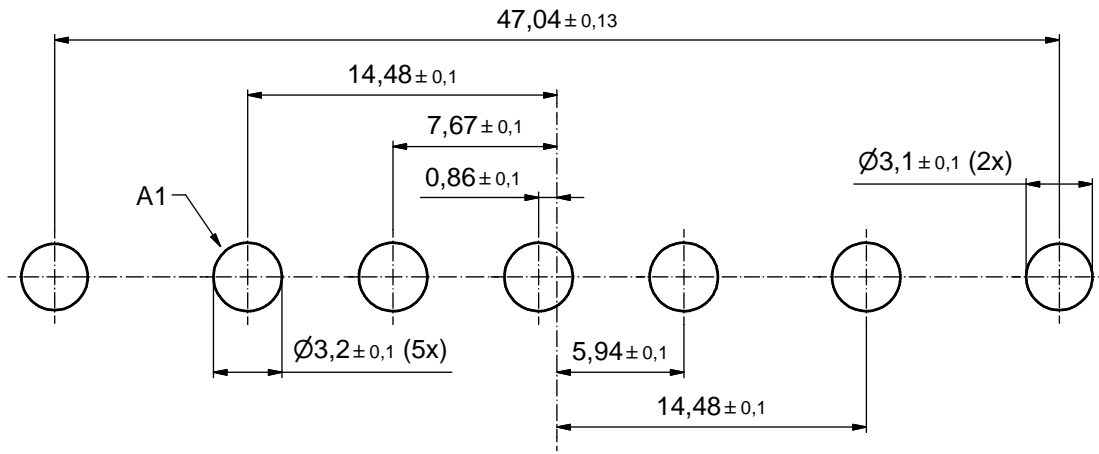
RoHS compliant

THIS DRAWING MAY NOT BE COPIED OR REPRODUCED IN ANY WAY, AND MAY NOT BE PASSED ON TO A THIRD PARTY WITHOUT WRITTEN PERMISSION. OWNERSHIP AND COPYRIGHT OF CONEC GmbH DO NOT ALTER CAD DRAWING BY HAND				tolerance		scale: 2:1 (5:1)		
				dim. in mm		material: SEE NOTES		
2 x b a				date	name	title: D-SUB COMBINATION MALE 5W5P SOLDER PIN STRAIGHT with closed 4-40 UNC thread and rear spacer clip		
				drawn	17.09.15			Lehmenkühler
				appd.	21.09.15			Fischer
				norm				
rev. description				date	name	dwg no:	DIN-A3	
						15K1A1694	sh: 1	
						part no: 15-00722 (see note 10)		

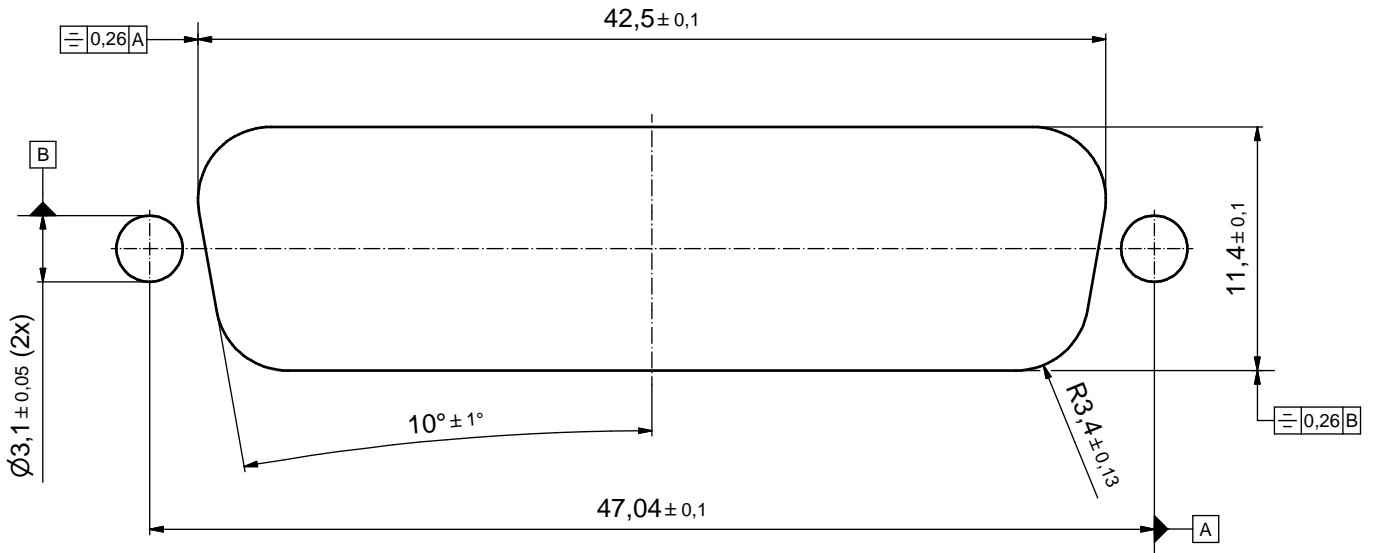


P.C.B. HOLE DRILLINGS

(P.C.B. TOP SIDE)



RECOMMENDED PANEL CUT-OUT



THIS DRAWING MAY NOT BE COPIED OR REPRODUCED IN ANY WAY, AND MAY NOT BE PASSED ON TO A THIRD PARTY WITHOUT WRITTEN PERMISSION. OWNERSHIP AND COPYRIGHT OF CONEC GmbH DO NOT ALTER CAD DRAWING BY HAND				tolerance		scale: 4:1
				date	name	material: SEE SHEET 1
				drawn	17.09.15	Lehmenkühler
				appd.	21.09.15	Fischer
				norm		
			d-old			
			rev.	a	Original	title: P.C.B. HOLE DRILLINGS RECOMMENDED PANEL CUT-OUT D-SUB COMBINATION MALE 5W5P SOLDER PIN
			description			dwg no: 15K1A1694
			date			DIN-A3
			name			sh: 2
			CONEC [®]			part no: SEE SHEET 1

Mouser Electronics

Authorized Distributor

Click to View Pricing, Inventory, Delivery & Lifecycle Information:

[CONEC:](#)

[15-007223](#)