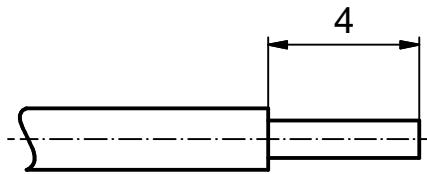


Directive 2002/95/EC
„RoHS“
Compliant

STRIPPING DIMENSION



NOTES:

1. MATERIAL: COPPER ALLOY
 2. PLATING: SEE TABLE
 3. CRIMPING: USE CRIMP TOOL 360X10329X WITH TOOL INSERT 360X20039X
- ⓑ SELECTOR SETTINGS: 7 FOR AWG 24
6 FOR AWG 26
5 FOR AWG 28

ⓑ	Plating	Part-No.
	min. 8µm HARD GOLD over min. 50µm NICKEL	131A15029X
	min. 30µm HARD GOLD over min. 50µm NICKEL	131C15029X
	min. 50µm HARD GOLD over min. 50µm NICKEL	131J15029X

THIS DRAWING MAY NOT BE COPIED OR REPRODUCED IN ANY WAY, AND MAY NOT BE PASSED ON TO A THIRD PARTY WITHOUT WRITTEN PERMISSION. OWNERSHIP AND COPYRIGHT OF CONEC GmbH

DO NOT ALTER CAD DRAWING BY HAND

				tolerance		scale:	5.1		
				date	name	material:	SEE NOTES		
				drawn	29.04.08	Petker	title: SIGNAL CRIMP CONTACT MALE CONTACT ⓑ Wire Size 24-28		
				appd.	30.04.08	Mickenbecker			
				norm					
				d-old					
3 x b	Ä 3706	03.08.10	Lehm.				dwg no:	Inventor 10	DIN-A4
a	Origin						part no:	16K1A2290	sh: 1
rev.	description	date	name				part no:	SEE TABLE	

Mouser Electronics

Authorized Distributor

Click to View Pricing, Inventory, Delivery & Lifecycle Information:

[CONEC:](#)

[131C15029X](#)