

# AirLink® XR90 5G

## Highest Performance Multi-Network 5G/ Wi-Fi 6 Router

The supercharged AirLink XR90 is purpose-built for public safety and transit with available dual-5G cellular radios and dual independent 4x4 MU MIMO Wi-Fi 6 antennas. It is the highest performing, most flexible router in the Semtech (formerly Sierra Wireless) portfolio. It supports complete device-to-cloud security, reduces your total cost of ownership with ALMS Out-of-Band management, and with the cartridge-based design, enables long-term expandability and upgradability.



Single/Dual Serial	Single or Dual 5G
GNSS with Dead Reckoning	Dual 4x4 MU-MIMO Wi-Fi 6
IP64 Rated	Single 5G: 4x Ethernet (3x1 Gbps + 1x5 Gbps)
AirLink OS with AirLink Premium	Dual 5G: 5x Ethernet (4x1 Gbps + 1x5 Gbps)



## AirLink® XR90 – Router Specifications

### KEY FEATURES

<b>Cellular Radios</b>	Single & Dual 5G LPWA for ALMS Out of Band Management
<b>Wi-Fi</b>	Dual 4x4 MU MIMO Wi-Fi 6
<b>Ethernet</b>	Single 5G: 3x Gigabit, 1x 5 Gigabit Ethernet Port Dual 5G: 4x Gigabit, 1x 5 Gigabit Ethernet Port
<b>Serial</b>	Single/Dual RS-232 (DB9) with optional cables
<b>GNSS</b>	48 Channel GNSS with Dead Reckoning
<b>CAN</b>	CAN bus/OBD-II (J1979)/J1939)
<b>I/O</b>	5 GPIO
<b>USB</b>	USB 3.1 USB-C
<b>Bluetooth</b>	Selectable Bluetooth 4.x Classic or Bluetooth LE (Future)
<b>IP Rating</b>	Sealed Aluminum Housing (IP64 Rated)
<b>Services</b>	AirLink Premium
<b>Operating System</b>	AirLink OS
<b>Management System</b>	ALMS

Region	North America	EMEA & APAC
<b>CELLULAR</b>		
<b>Variant</b>	North America	EMEA, APAC
<b>Technology</b>	Single/Dual 5G	Single/Dual 5G
<b>Peak Downlink (Theoretical)</b>	4.14 Gbps	4.14 Gbps
<b>Peak Uplink (Theoretical)</b>	660 Mbps	660 Mbps
<b>LTE Category</b>	5G	5G
<b>Region</b>	NAM	EMEA, APAC
<b>Radio</b>	EM9190	EM9190
<b>MIMO</b>	Single/Dual 4x4	Single/Dual 4x4
<b>RF Connectors</b>	FAKRA	FAKRA
<b>SIM</b>	Dual SIM (Mini-2FF)	Dual SIM (Mini-2FF)

## FREQUENCY BANDS

	1	2	3	4	5	6	7	8	9	10	12	13	14	17	18	19	20	25	26
<b>5G (SA &amp; NSA)</b>	n1	n2	n3	–	n5	–	n7*	n8*	–	–	n12	–	–	–	–	–	n20	n25	–
<b>4G LTE</b>	B1	B2	B3	B4	B5	–	B7	B8	–	–	B12	B13	B14	B17	B18	B19	B20	B25	B26
<b>3G (HSPA+)</b>	B1	B2	–	B4	B5	B6	–	B8	B9	–	–	–	–	–	–	B19	–	–	–
<b>LPWA</b>	B1	B2	B3	B4	B5	–	–	B8	B9	B10	B12	B13	–	B17	B18	B19	B20	B25	B26

## FREQUENCY BANDS

	27	28	29	30	32	34	38	39	40	41	42	43	46	48	66	71	77	78	79
<b>5G (SA &amp; NSA)</b>	–	n28	–	–	–	–	n38	–	n40	n41	–	–	–	n48	n66	n71	n77	n78	n79
<b>4G LTE</b>	–	B28	B29	B30	B32	B34	B38	B39	B40	B41	B42	B43	B46	B48	B66	B71	–	–	–
<b>3G (HSPA+)</b>	–	–	–	–	–	–	–	–	–	–	–	–	–	–	–	–	–	–	–
<b>LPWA</b>	B27	B28	–	–	–	–	–	–	–	–	–	–	–	–	B66	–	–	–	–

\*Full-band models only (SKUs ending by 'FB')

\*\*Downlink only

## WIRELESS CERTIFICATION

<b>Regulatory</b>	FCC, IC/ISED, PTCRB	GCF, CE, RED, RCM, ESN
<b>Carrier</b>	AT&T, FirstNet® 4G, T-Mobile, Verizon, Rogers, Telus, Bell, CBRS, C-Band	BT
<b>Public Safety</b>	FirstNet® 4G	ESN
<b>Part Numbers</b>	1104785 Single 5G 1104786 Dual 5G 1104757 XP 5G Cartridge (Optional)	1104722 Single 5G 1104723 Dual 5G 1104757 XP 5G Cartridge (Optional)

**WI-FI**

<b>Wi-Fi Standard</b>	Wi-Fi 6 802.11ax
<b>Access Point</b>	Dual
<b>Client (Depot/WAN)</b>	Yes
<b>Client &amp; AP</b>	Yes
<b>Peak Throughput (Theoretical)</b>	2400 Mbps
<b>MIMO</b>	Dual 4x4
<b>Security</b>	WPA2/3 Enterprise
<b>Clients</b>	Up to 256
<b>SSID</b>	4 per radio
<b>Output Power</b>	23.3 dBm per chain
<b>Frequency</b>	2.4/5 GHz
<b>RF Connectors</b>	FAKRA (Beige)

**ENVIRONMENTAL**

<b>Operating Temperature</b>	-30°C to +70°C / -22°F to +158°F
<b>Storage Temperature</b>	-40°C to +85°C / -40°F to +185°F
<b>Humidity</b>	95% RH @ 60°C
<b>Military Specification</b>	MIL-STD-810G (Shock, Vibration, Thermal Shock, Humidity)
<b>IP Rating</b>	IP64

**INDUSTRY CERTIFICATIONS**

<b>Safety</b>	IECEE Certification Bodies Scheme (CB Scheme), UL 60950
<b>Vehicle Usage</b>	E-Mark (72/245/EEC, 2009/19/EC), ISO7637- 2, SAE J1455 (Shock & Vibration, Electrical)
<b>Environmental Directives</b>	RoHS2, REACH, WEEE, Prop 65
<b>Hazardous Environments</b>	Class 1 Div 2 – Ambient temperatures of -30°C to +60°C IECEX & ATEX
<b>Rail Usage</b>	EN50155/EN45545 (Rolling Stock)

**POWER**

<b>Input Voltage</b>	7 to 36 VDC
<b>Power Consumption</b>	Dual 5G Peak: 68W (5.7A @12V) Standby 55mW: (4.5mA@12V)
<b>Power Modes</b>	Built-in protection against voltage transients including 5 VDC engine cranking and +200 VDC load dump Ignition Sense with time delay shutdown

**SECURITY**

<b>AAA</b>	802.1x /Radius authentication with Wi-Fi
<b>Firewall</b>	Stateful firewall with port forwarding, DMZ
<b>WLAN Encryption</b>	WPA2/WPA3 Personal/Enterprise
<b>Firmware Update</b>	Secure Firmware Update

**NETWORK AND ROUTING**

<b>Throughput</b>	1150 Mbps Firewall TCP throughput
<b>Features</b>	Cognitive Wireless IPv4 and IPv6 Routing Network Address Translation (NAT) Port Forwarding DHCP Server IP Passthrough LAN Segmentation IPv4 Passthrough and IPv6 Prefix Extension WAN/LAN Connection Policy Management Policy-Based Routing Configurable MTU size Static Routing WAN Ethernet
<b>QoS</b>	Application/Traffic Priority Queuing
<b>WAN Monitors</b>	Connection Failure Recovery

**LAN (ETHERNET/USB)**

	USB to Ethernet
--	-----------------

**VPN**

<b>Throughput</b>	350 Mbps IPSec VPN TCP throughput
<b>Features</b>	Integrated with ACM VPN Server IPsec protocol with IKEv1/IKEv2 FIPS 140-2 Level 1 compliant
<b>Encryption</b>	AES128/AES192/AES256
<b>Hashing</b>	SHA256/SHA384/SHA512
<b>Key Exchange</b>	DHGroup14/15/16/17/18/19/20/21
	LAN to LAN and Host to LAN Up to 10 concurrent tunnels per link MOBIKE protocol IP compression Full/Split Tunnel Dead Peer Detection (DPD)

**ROUTER MANAGEMENT INTERFACES**

	ALMS Local web user interface REST API (Beta)
--	---

**EDGE COMPUTING**

	Support for Edge Compute Containerized Applications (Beta)
<b>RAM<sup>1,2</sup></b>	200 MB
<b>Storage (Flash)<sup>1</sup></b>	750 MB
<b>CPU</b>	Quad Core ARMv8 64 bit

<sup>1</sup> Approximation available to containers (not device total)<sup>2</sup> Depends on other enabled features**AIRLINK SERVICES**

<b>Services</b>	AirLink Premium
<b>Support</b>	24/7 technical support and advance hardware replacement*
<b>Warranty</b>	1 year standard warranty** with up to 5 years extended warranty with current AirLink Premium subscription
<b>Device Management</b>	ALMS with Advanced Mobility Reporting*
<b>Software Updates</b>	Unrestricted critical firmware updates through at least December 31st, 2029

\*With current AirLink Premium subscription

\*\*Full warranty terms are available at [www.sierrawireless.com/end-user-warranty](http://www.sierrawireless.com/end-user-warranty)**RELIABILITY**

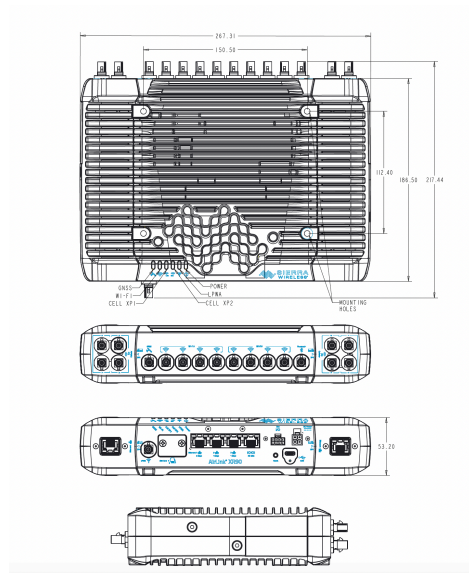
<b>MTBF</b>	Single 5G: 19.0 years Using Telcordia SR-332 Issue 3 Method 1
-------------	--

**ACCESSORIES**

<b>In The Box</b>	XR90, DC Power cable, LPWA Antenna, Quick Start Guide, AirLink Premium Leaflet
<b>Other Accessories (sold separately)</b>	6001004 XR80/90/MP/LX I/O Cable 6001192 XR80/90/MP70 J1939 Y Cable 6001204 XR80/90/MP70 OBD-II Y Cable 6001350 XR80/90 Mounting Bracket 6001372 XR80/90 AC Adaptor, 24 VDC 6001406 XR80/90 DC Power Cable 6001409 XR80/90 RJ45 to Dual DB9 6001410 XR80/90 RJ45 to Single DB9 6001433 XR80/90 DIN Rail Mounting Bracket 6001440 XR80/90 FAKRA Replacement Kit (8 Pieces) 6001456 XR80/90 to MG90 Mounting Bracket 1104757 XR80/90 XP-5G XR-Cartridge Global & NAM For Antenna options visit: <a href="#">here</a>

**DIMENSIONS**

<b>Size</b>	Base: 220mm x 170mm x 53mm / 8.7 x 6.7 x 2.1 in Single XP: 220mm x 220mm x 53mm / 8.7 x 8.7 x 2.1 in Dual XP: 268mm x 220mm x 53mm / 10.5 x 8.7 x 2.1 in
<b>Weight</b>	Base: 2.06 Kg / 4.54 lb Single XP: 2.64 Kg / 5.82 lb Dual XP: 3.22 Kg / 7.09 lb



AirLink XR90 Dual 5G

*\*For carrier specific band support please refer to the hardware user guide.*

# Mouser Electronics

Authorized Distributor

Click to View Pricing, Inventory, Delivery & Lifecycle Information:

[Semtech:](#)

[1104723](#) [1104786](#) [1104722](#) [1104785](#)