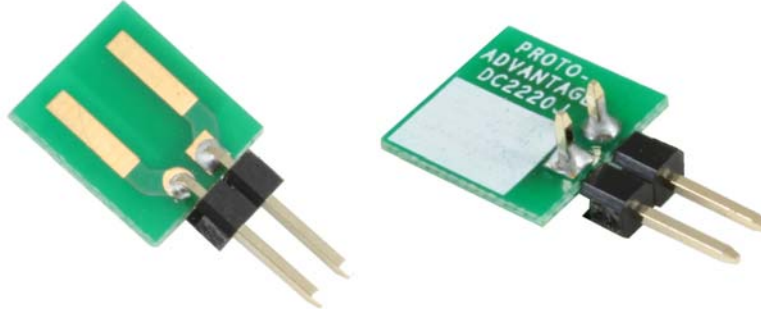


DC2220J-10X *Proto Advantage*

Datasheet revision 1.0

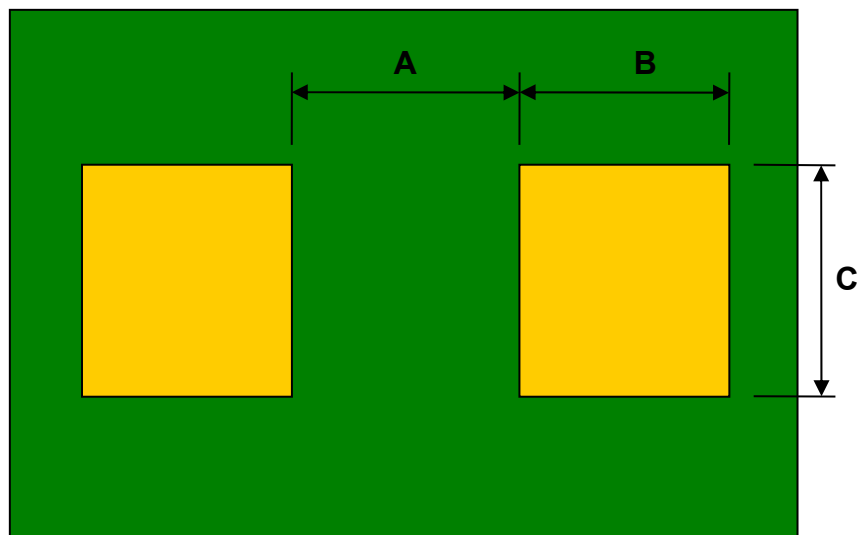
www.Proto-Advantage.com

10 pack: Discrete to TH Adapters – SM/TH/J pins



DIMENSIONS						
Part Numbers	mm			inches		
	A	B	C	A	B	C
DC0402S / DC0402T / DC0402J	0.25	0.65	0.65	0.010	0.026	0.026
DC0603S / DC0603T / DC0603J	0.70	0.90	1.00	0.028	0.035	0.039
DC0805S / DC0805T / DC0805J	1.05	0.95	1.40	0.041	0.037	0.055
DC1206S / DC1206T / DC1206J	2.05	1.05	1.80	0.081	0.041	0.071
DC1210S / DC1210T / DC1210J	1.90	1.10	2.70	0.075	0.043	0.106
DC1411S / DC1411T / DC1411J	1.10	1.80	2.25	0.043	0.071	0.089
DC1813S / DC1813T / DC1813J	2.70	1.40	3.40	0.106	0.055	0.134
DC2010S / DC2010T / DC2010J	3.45	1.25	2.70	0.136	0.049	0.106
DC2220S / DC2220T / DC2220J	3.75	1.55	5.40	0.148	0.061	0.213
DC2413S / DC2413T / DC2413J	2.60	2.25	2.30	0.102	0.089	0.091
DC2512S / DC2512T / DC2512J	4.85	1.25	3.40	0.191	0.049	0.134
DC2917S / DC2917T / DC2917J	4.15	2.05	4.60	0.163	0.081	0.181
DC2924S / DC2924T / DC2924J	3.85	2.35	4.15	0.152	0.093	0.163

Top View (SMD Footprint)



(Representative drawing only - not to scale)

Mouser Electronics

Authorized Distributor

Click to View Pricing, Inventory, Delivery & Lifecycle Information:

[Chip Quik:](#)
[DC2220J-10X](#)