

## CQ-ESD-MAT and Accessories

### Product Highlights

Chip Quik ESD Mats are 0.079" (2mm) thick and come in sizes of 1x1 feet, 1x2 feet, 2x3 feet, 2x4 feet, as well as 50-foot-long rolls in widths of 2, 2.5, 3 and 4 feet. High Temperature Resistant, designed for use with soldering irons and hot air soldering/desoldering equipment.

**RoHS 3 and REACH compliant**

### Specifications

Thickness: 0.079" (2mm)

Resistance (Surface to Ground):  $1 \times 10^6$  to  $1 \times 10^9$  ohms

Resistance (Surface to Surface):  $1 \times 10^6$  to  $1 \times 10^9$  ohms

Temperature Resistance: -25°C up to 450°C (Contact with soldering materials for short durations up to 200-300°C usually will not cause discoloration. Slight discoloration may occur if high heat is applied for long durations.)



### Orderable Part Numbers

Part Number	Color	Size (Tolerance)	Thickness	Resistance
CQ-ESD-MAT-1x1	Light Blue	1' x 1' (-0/+2%)	0.079"	$10^6$ to $10^9$ ohm
CQ-ESD-MAT-1x2	Light Blue	1' x 2' (-0/+2%)	0.079"	$10^6$ to $10^9$ ohm
CQ-ESD-MAT-2x3	Light Blue	2' x 3' (-0/+2%)	0.079"	$10^6$ to $10^9$ ohm
CQ-ESD-MAT-2x4	Light Blue	2' x 4' (-0/+2%)	0.079"	$10^6$ to $10^9$ ohm
CQ-ESD-MAT-2x50	Light Blue	2' x 50' (-0/+2%)	0.079"	$10^6$ to $10^9$ ohm
CQ-ESD-MAT-2.5x50	Light Blue	2.5' x 50' (-0/+2%)	0.079"	$10^6$ to $10^9$ ohm
CQ-ESD-MAT-3x50	Light Blue	3' x 50' (-0/+2%)	0.079"	$10^6$ to $10^9$ ohm
CQ-ESD-MAT-4x50	Light Blue	4' x 50' (-0/+2%)	0.079"	$10^6$ to $10^9$ ohm
CQ-ESD-WRIST-1	Light Blue	3'-6' stretch		1M ohm
CQ-GROUND-CORD-1	Black	6'		1M ohm
CQ-ESD-BUTTON-1	Metal			
CQ-ESD-CRIMPER-1	Green/Red			

### What's Included

- 1x1 foot, 1x2 foot, 2x3 foot and 2x4 foot ESD Mats each come with two grounding buttons pre-installed, as well as one wrist strap and one grounding cord.
- 50-foot rolls do not include grounding buttons, wrist straps or grounding cords, but those parts can be ordered separately.

### Grounding

Lay the ESD Mat in position on your work surface (Light Blue side up, black side down). Snap the black ground cord to a grounding button on the ESD Mat. Connect the other end of the ground cord to a common ground point, such as the center screw of a standard AC electrical outlet, using the ring terminal located on the end of the ground cord. Testing is recommended to make sure the screw is properly grounded.

### Product Photos



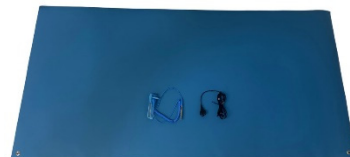
CQ-ESD-MAT-1x1



CQ-ESD-MAT-1x2



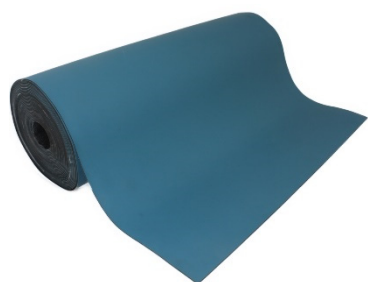
CQ-ESD-MAT-2x3



CQ-ESD-MAT-2x4

Continued on Next Page →

**Product Photos Continued**



CQ-ESD-MAT-2x50



CQ-ESD-MAT-2.5x50



CQ-ESD-MAT-3x50



CQ-ESD-MAT-4x50



CQ-ESD-WRIST-1



CQ-GROUND-CORD-1



CQ-ESD-BUTTON-1



CQ-ESD-CRIMPER-1

# Mouser Electronics

Authorized Distributor

Click to View Pricing, Inventory, Delivery & Lifecycle Information:

[Chip Quik:](#)

[CQ-ESD-MAT-4x50](#)