

ISL78692EVAL1Z

Evaluation Board User Guide

UG001  
Rev 0.00  
September 10, 2014

**Description**

The ISL78692EVAL1Z is a complete platform for the evaluation on all datasheet specifications and functionalities. The onboard 8-bit DIP switch facilitates battery charge current programming, setting EN input, temperature monitoring status, and so on. The four jumpers can set up input source selection, USB mode selection, and can be used to make other necessary connections.

The ISL78692EVAL1Z board is intended to provide an evaluation platform for the 3mmx3mm DFN ISL78692 package, single-cell Li-ion battery charger.

The device along with key components constitute a complete charger solution, demonstrating the space saving advantage of the ISL78692 in limited space applications.

LEDs connected to STATUS and FAULT pins will indicate the normal charging status or fault condition.

Onboard jumpers and a DIP switch allow the different operating conditions for the charger.

**Specifications**

- Ambient temperature range, -40°C to +85°C
- Supply voltage,  $V_{IN}$  = 4.3V to 5.5V
- Output voltage,  $V_{BAT}$  = 4.1V
- Trickle charge voltage, 2.8V
- Recharge threshold voltage, 3.9V
- Constant charge current, 0.5A

**Key Features**

- Complete charger for single-cell Li-ion batteries
- Integrated pass element and current sensor
- No external blocking diode required
- 1% voltage accuracy
- Programmable current limit up to 0.5A
- NTC thermistor interface for battery temperature monitor, 8-bit DIP switch for conveniently setting up charging current, battery thermal status, EN input, and so on.
- Different jumpers for input source selection, USB mode selection, and the convenience of current measurement.
- Test points provided for STATUS, FAULT, TIME, EN, V2P8 and TEMP functional pins to allow for monitoring the device pins.
- Board size 3.5" x 2.5" for the convenience of evaluation
- Eight thermal vias in the thermal pad
- RoHS compliant

**References**

- [ISL78692](#) datasheet

**Ordering Information**

| PART #         | DESCRIPTION                                   |
|----------------|---|
| ISL78692EVAL1Z | Evaluation Board for the 3x3 DFN Package Part |

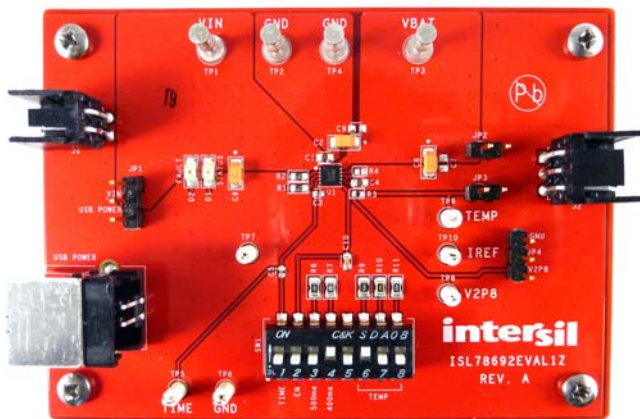


FIGURE 1. TOP VIEW



FIGURE 2. BOTTOM VIEW

## What Is Inside

The Evaluation Kit contains:

- ISL78692EVAL1Z board
- The ISL78692 Datasheet
- This ISL78692EVAL1Z User Guide

## What Is Needed

The following instruments will be needed to perform testing:

- Power supplies:
  - PS1: DC 20V/5A,
  - PS2: DC (sinks current) 20V/5A, such as Agilent 6654A
- Electronic load: 20V/5A
- Multimeters
- Function generator
- Oscilloscope
- Cables and wires

## Quick Setup Guide

Step 1: Switch on bit 4 and bit 7 of the DIP-switch. Leave all other bits off, see [Figure 3](#).

---

**DO NOT APPLY POWER UNTIL STEP 6**

---

Step 2: Connect 5V to VIN.

Step 3: Connect 3.7V to VBAT.

Step 4: Connect 1.2A electronic load to VBAT.

Step 5: Verify that no shunts are connected across all jumpers.

Step 6: Turn on Power Supplies and electronic load.

Step 7: Green LED should be on, indicating normal charging operation.

Step 8: If current meter is in series with VIN, it shall read 400mA as the charging current.

### DIP Switch Settings

A 9-bit DIP switch is provided to set up voltage, current reference, end-of-charge (EOC) current, and so on. The functionality of the bits are described in [Table 2](#).

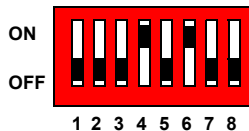


FIGURE 3. INITIAL DIP SWITCH SETTINGS

TABLE 1. JUMPER SETTINGS

| JUMPER | POSITION         | FUNCTION   |
|--------|------------------|--|
| JP1    | USB TO VIN       | USB connection   |
|        | WALL CUBE TO VIN | Wall adapter connection  |
| JP2    | Installed        | Connect VBAT pin to battery<br>Current meter can replace shunt |
| JP3    | Not installed    | Default  |
|        | Installed        | Battery attached to Thermistor at J2                           |
| JP4    | IREF and V2P8    | USB 500mA  |
|        | IREF and GND     | USB 100mA  |

TABLE 2. DIP SWITCH PIN DESCRIPTIONS

| BIT | DESCRIPTION            | ON                 | OFF                | REMARK                            |
|-----|------------------------|--------------------|--------------------|-----------------------------------|
| 1   | Adjustable TIMEOUT     | 5 hours<br>50 mins | 3 hours<br>30 mins |                                   |
| 2   | Charger enable/disable | Charger disabled   | Charger enabled    |                                   |
| 3   | IREF setting 1         | Add 0.5A           |                    |                                   |
| 4   | IREF setting 2         | Add 0.4A           |                    |                                   |
| 5   |                        |                    |                    | Not connected                     |
| 6   | TEMP normal            | Normal             |                    | All off simulates battery removal |
| 7   | TEMP high              | Too hot            |                    |                                   |
| 8   | TEMP low               | Too cold           |                    |                                   |

### Initial Board Jumper Positioning (Refer to “Schematic” on page 4)

**JP1** - Selects the VIN pin connection to a wall adapter, or to USB connector. If J1 connector is being used, a shunt must be installed across JP1-1, 2 or if J3 (USB) connector is being used a shunt must be installed across JP1-2, 3. J1, J3 and JP1 can be ignored if power supply is connected directly to VIN test point, which is directly connected to the VIN pin of the IC. A current meter can replace the shunt mentioned above, so as to measure the input current.

**JP2** - Connects the VBAT pin to the battery. If the J2 connector is being used, a shunt must be installed across JP2. A current meter can also replace the shunt to measure the VBAT current.

**JP3** - Connects the TEMP pin to the battery. Usually no shunt is needed for JP3, as the evaluation board can simulate various battery thermal conditions. Only when a battery attached with a thermistor is applied on J2 does it become necessary to install a shunt across JP3, and at the same time, bits 6, 7, 8 on the DIP switch all need to be turned off.

**JP4** - Selects USB modes: a shunt across IREF and V2P8 will set USB 500mA mode, a shunt across IREF and GND will set USB 100mA mode. When the charge current is programmed by the resistors connected to IREF pin, no shunt should be installed on JP4.

## PCB Layout Recommendations

The ISL78692 internal thermal foldback function limits the charge current when the internal temperature reaches approximately +100°C. In order to maximize the current capability, it is very important that the exposed pad under the package is properly soldered to the board and is connected to other layers through thermal vias. More thermal vias and more

copper attached to the exposed pad usually result in better thermal performance. On the other hand, the number of vias is limited by the size of the pad. The 3x3 DFN package allows 9 vias be placed in three rows. Since the pins on the 3x3 DFN package are on only two sides, as much top layer copper as possible should be connected to the exposed pad to minimize the thermal impedance. Refer to [“PCB Layout”](#) starting on [page 6](#).

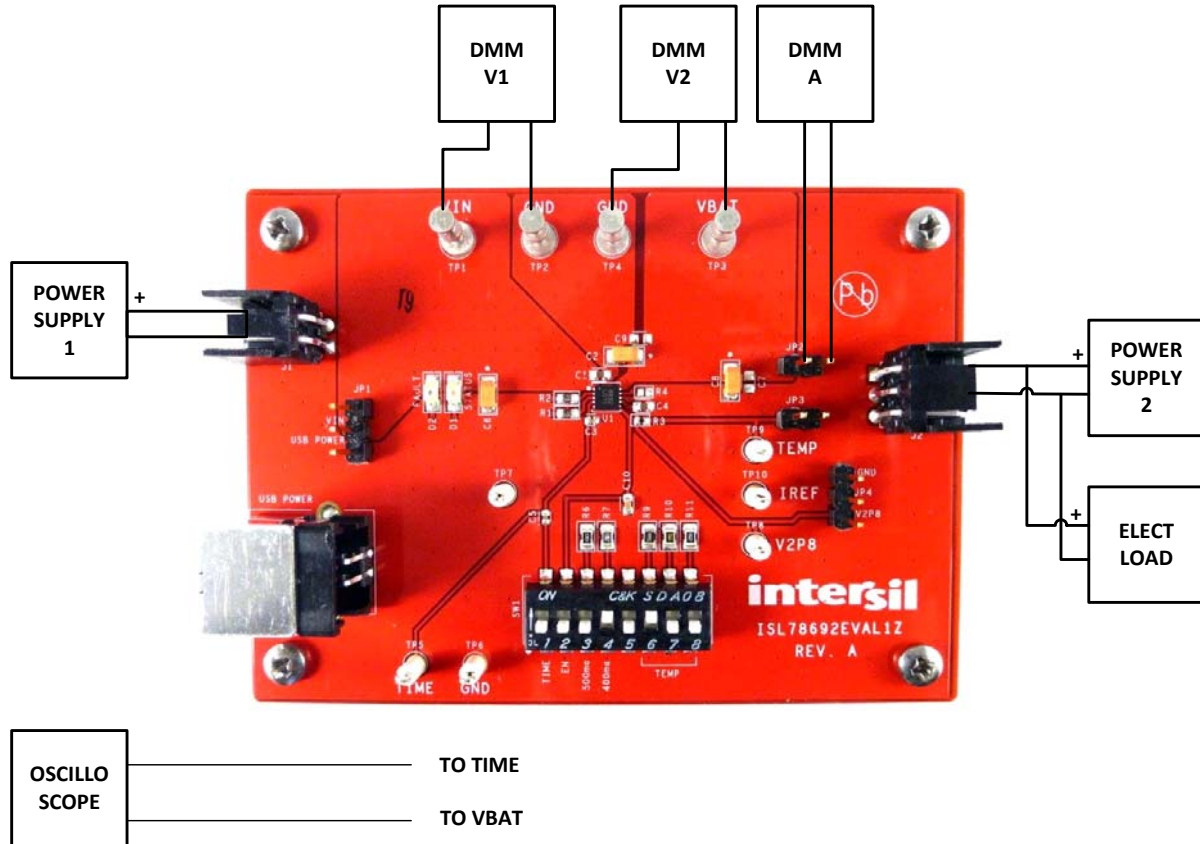
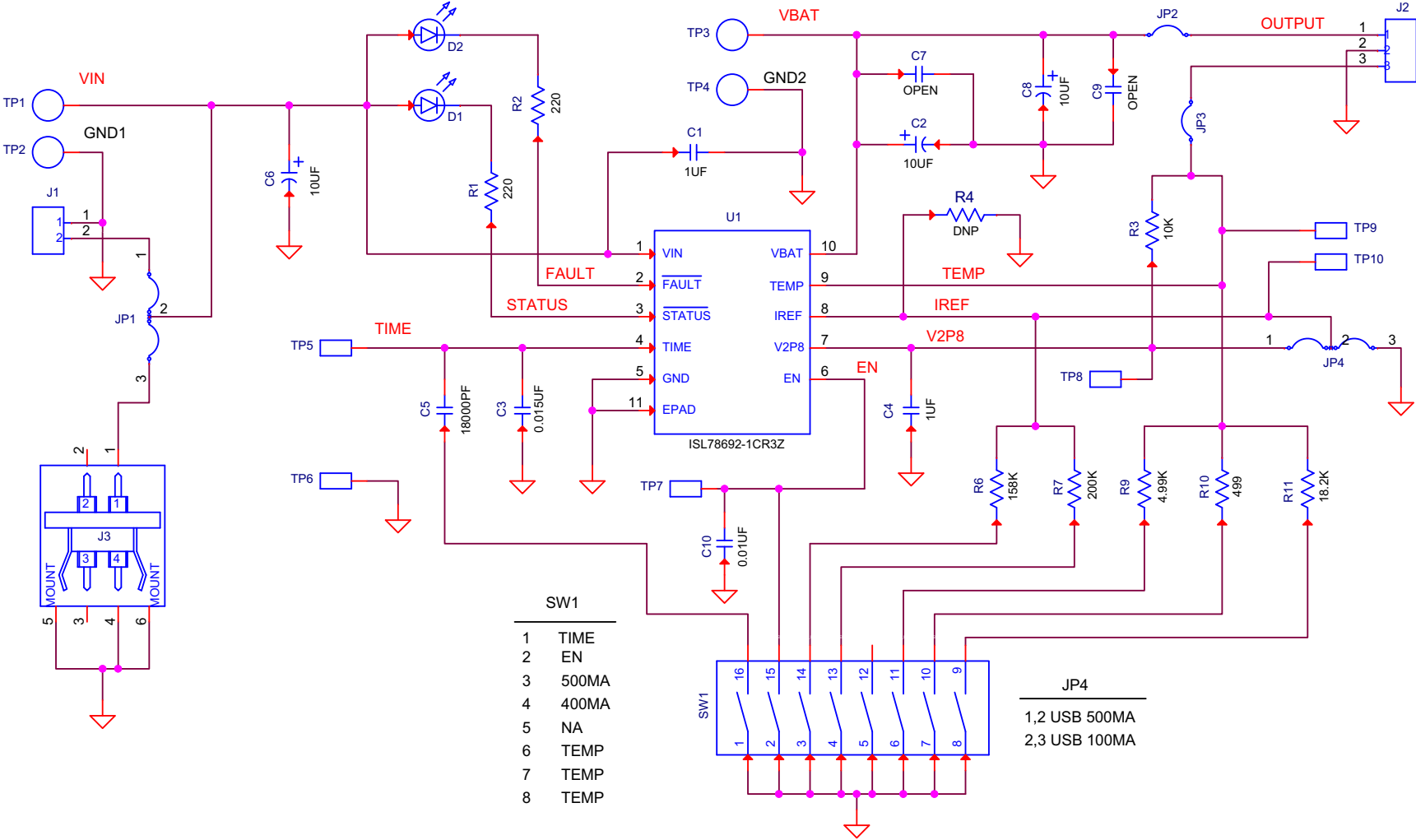


FIGURE 4. CONNECTION OF INSTRUMENTS

**Schematic**



**SW1**

|   |       |
|---|-------|
| 1 | TIME  |
| 2 | EN    |
| 3 | 500MA |
| 4 | 400MA |
| 5 | NA    |
| 6 | TEMP  |
| 7 | TEMP  |
| 8 | TEMP  |

**JP4**

|     |           |
|-----|-----------|
| 1,2 | USB 500MA |
| 2,3 | USB 100MA |

## Bill of Materials

| QTY | UNITS | REFERENCE DESIGNATOR | DESCRIPTION  | MANUFACTURER   | MANUFACTURER PART NUMBER |
|-----|-------|----------------------|--|----------------|--------------------------|
| 1   | ea    |                      | PWB-PCB, ISL78692EVAL1Z, REVA, ROHS                      |                | ISL78692EVAL1ZREVAPCB    |
| 2   | ea    | C1, C4               | CAP, SMD, 0603, 1.0µF, 16V, 10%, X7R, ROHS               | TDK            | C1608X7R1C105K           |
| 1   | ea    | C3                   | CAP, SMD, 0402, 0.015µF, 16V, 10%, X7R, ROHS             | PANASONIC      | ECJ-0EB1C153K            |
| 1   | ea    | C5                   | CAP, SMD, 0402, 0.018µF, 16V, 10%, X7R, ROHS             | MURATA         | GRM155R71C183KA01D       |
| 1   | ea    | C10                  | CAP, SMD, 0603, .01µF, 16V, 10%, X7R, ROHS               | VENKEL         | C0603X7R160-103KNE       |
| 0   | ea    | C7, C9               | CAP, SMD, 0603, DNP-PLACE HOLDER, ROHS                   |                |                          |
| 3   | ea    | C2, C6, C8           | CAP-TANT, LOW ESR, SMD, A, 10µF, 16V, 20%, 200mΩ, ROHS   | AVX            | TCJA106M016R0200         |
| 4   | ea    | TP1-TP4              | CONN-TURRET, TERMINAL POST, TH, ROHS                     | KEYSTONE       | 1514-2                   |
| 1   | ea    | J1                   | CONN-HEADER, 2P, SHROUDED, 2.54mm, RT.ANGLE, ROHS        | AMP/TYCO       | 2-644803-2               |
| 1   | ea    | J2                   | CONN-HEADER, 3P,SHROUDED, 2.54mm, RT.ANGLE, ROHS         | AMP/TYCO       | 2-644803-3               |
| 1   | ea    | J3                   | CONN-TYPE B RECEPTACLE, TH,4 POS, RT.ANGLE, ROHS         | AMP/TYCO       | 292304-1                 |
| 6   | ea    | TP5-TP10             | CONN-MINI TEST POINT, VERTICAL, WHITE, ROHS              | KEYSTONE       | 5002                     |
| 2   | ea    | JP1, JP4             | CONN-HEADER, 1x3, BREAKAWY 1X36, 2.54mm, ROHS            | BERG/FCI       | 68000-236HLF             |
| 2   | ea    | JP2, JP3             | CONN-HEADER, 1X2, RETENTIVE, 2.54mm, 0.230X 0.120, ROHS" | BERG/FCI       | 69190-202HLF             |
| 1   | ea    | D2                   | LED, SMD, 1206, RED, 30mA, 60mW, 17mcd, ROHS             | DIALIGHT       | 597-3111-407F            |
| 1   | ea    | D1                   | LED, SMD, 1206 ,GREEN, 75mW, 3mcd, Pb-Free               | DIALIGHT       | 597-3311-407F            |
| 1   | ea    | U1                   | IC-4.1V LI-ION/LI POLYMER CHARGER, 10LD DFN 3X3, ROHS    | INTERSIL       | ISL78692-1CR3Z           |
| 1   | ea    | R3                   | RES, SMD, 0402, 10k, 1/16W, 1%, TF, ROHS                 | PANASONIC      | ERJ-2RKF1002X            |
| 0   | ea    | R4                   | RES, SMD, 0402, DNP, DNP, DNP, TF, ROHS                  |                |                          |
| 2   | ea    | R1, R2               | RES, SMD, 0603, 220Ω, 1/10W, 1%, TF, ROHS                | YAGEO          | 9C06031A2200FKHFT        |
| 1   | ea    | R6                   | RES, SMD, 0805, 158k, 1/8W, 1%, TF, ROHS                 | YAGEO          | RC0805FR-07158KL         |
| 1   | ea    | R11                  | RES, SMD, 0805, 18.2k, 1/10W, 1%, TF, ROHS               | PANASONIC      | ERJ-6ENF1822V            |
| 1   | ea    | R7                   | RES, SMD, 0805, 200k, 1/8W, 1%, TF, ROHS                 | VENKEL         | CR0805-8W-2003FT         |
| 1   | ea    | R10                  | RES, SMD, 0805, 499Ω, 1/8W, 1%, TF, ROHS                 | YAGEO          | RC0805FR-07499RL         |
| 1   | ea    | R9                   | RES, SMD, 0805, 4.99k, 1/8W, 1%, TF, ROHS                | PANASONIC      | ERJ-6ENF4991V            |
| 1   | ea    | SW1                  | SWITCH-DIP, SMD, 8POS, TOP SLIDE, SPST, 24V, ROHS        | C&K COMPONENTS | SDA08H1SBD               |
| 4   | ea    | Four corners         | SCREW, 4-40X1/4in, PAN, SS, PHILLIPS                     |                |                          |
| 4   | ea    | Four corners         | STANDOFF, 4-40X3/4in, F/F, HEX, ALUMINUM, ROHS           | KEYSTONE       | 2204 (.250 OD)           |

# PCB Layout

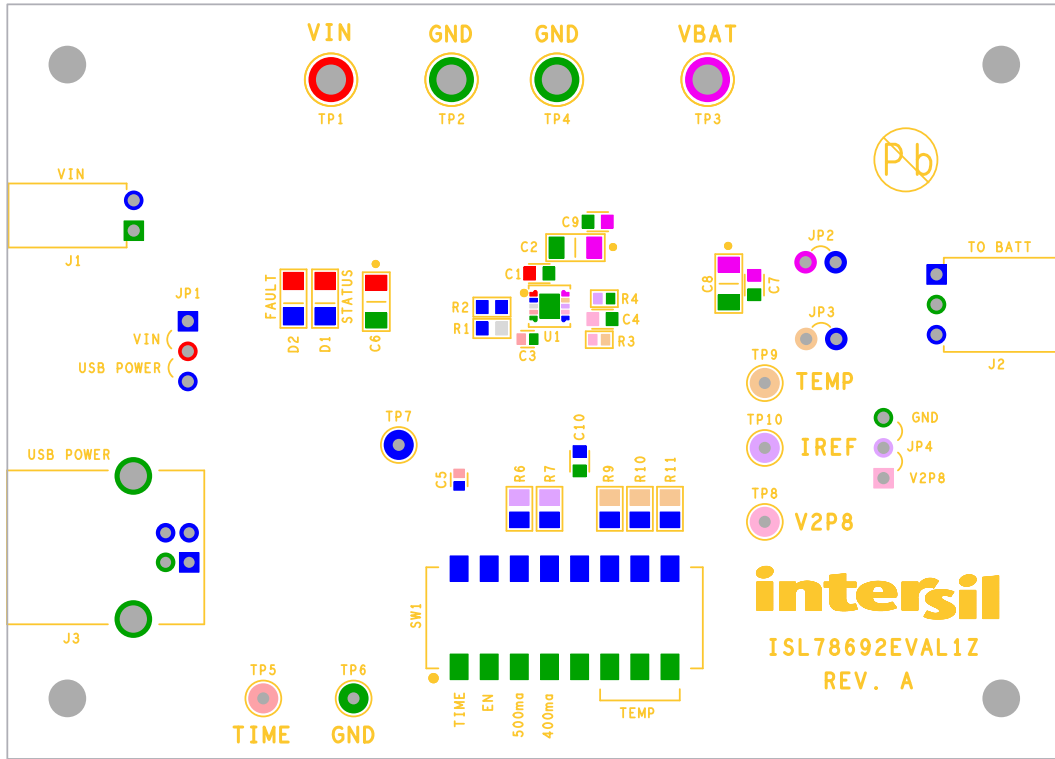


FIGURE 5. SILK LAYER TOP

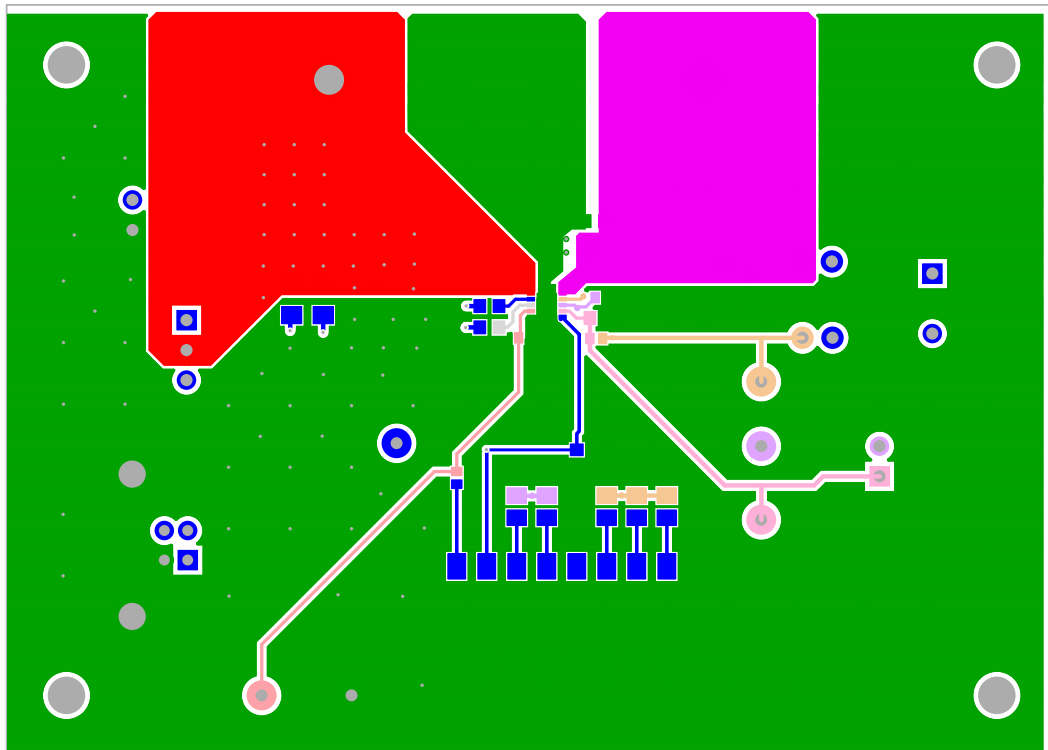


FIGURE 6. TOP LAYER COMPONENT SIDE

# PCB Layout (Continued)

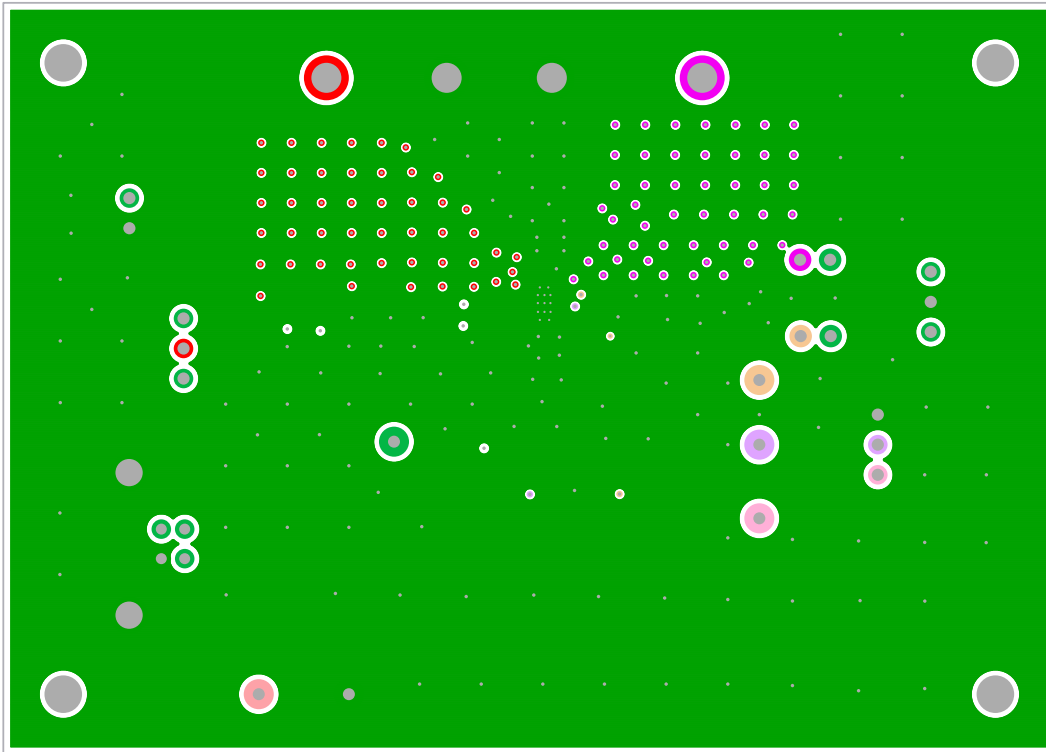


FIGURE 7. INTERNAL (LAYER 2)

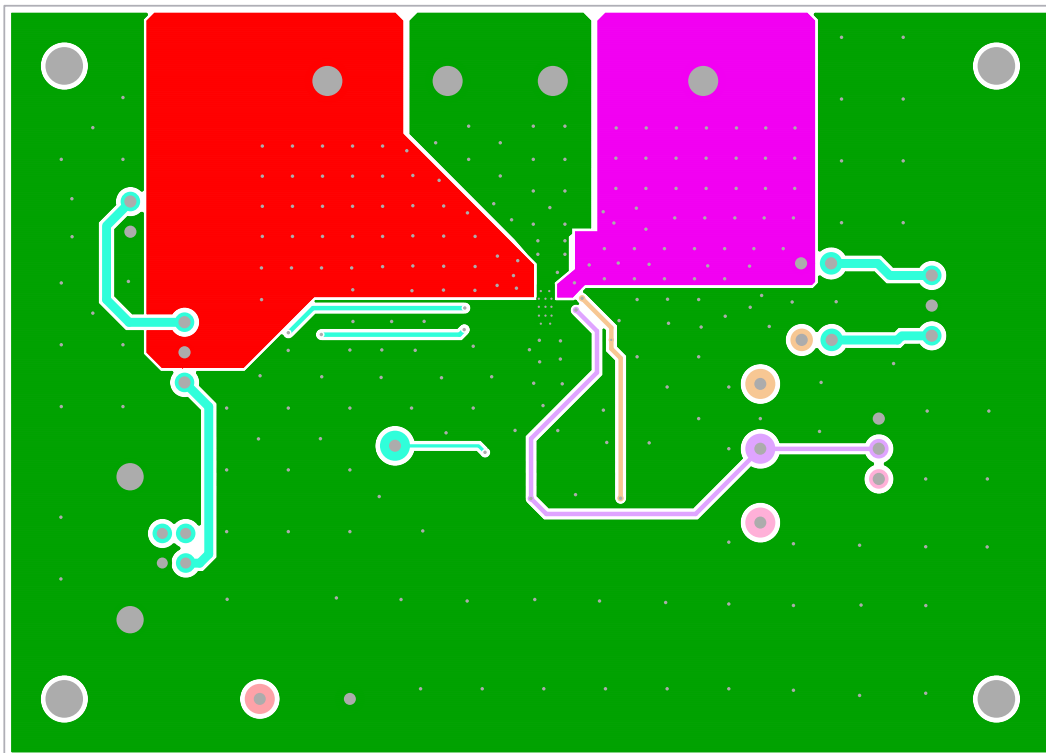


FIGURE 8. INTERNAL (LAYER 3)

# PCB Layout (Continued)

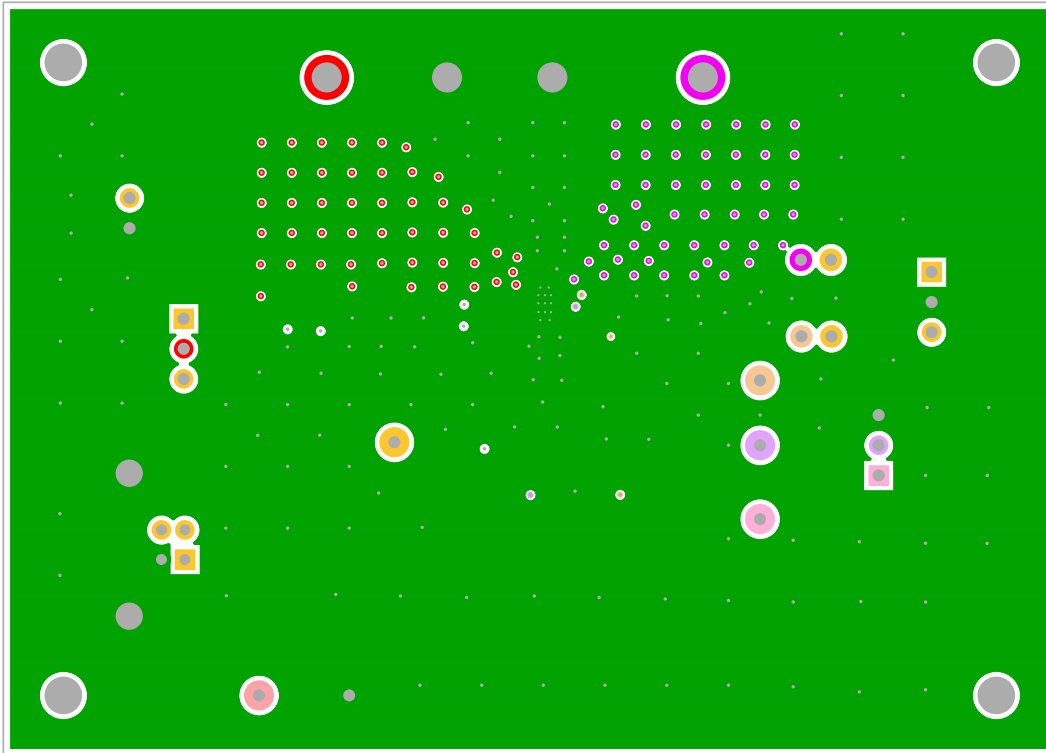


FIGURE 9. BOTTOM LAYER SOLDER SIDE

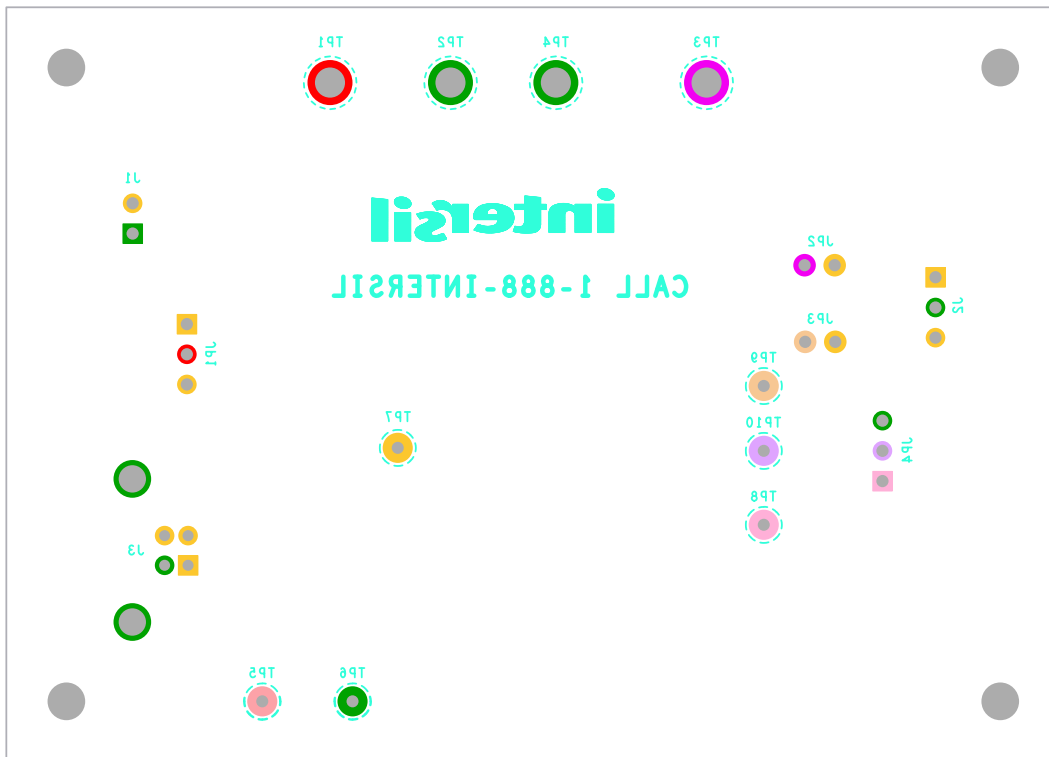
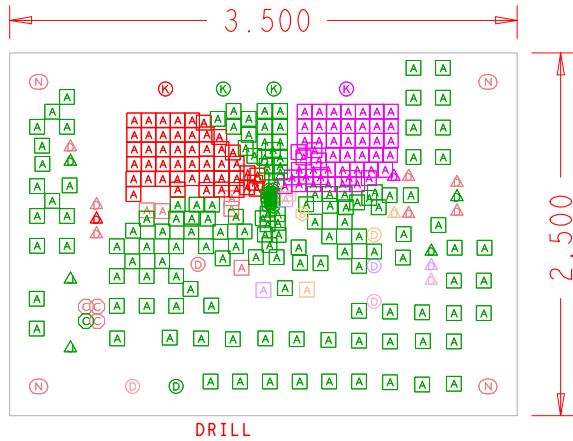
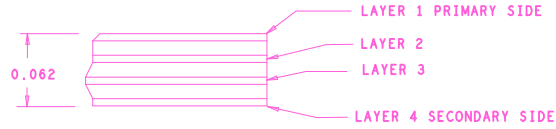


FIGURE 10. SILKSCREEN BOTTOM



# PCB Layout (Continued)



| DRILL CHART: TOP to BOTTOM |       |            |     |
|----------------------------|-------|------------|-----|
| ALL UNITS ARE IN MILS      |       |            |     |
| FIGURE                     | SIZE  | PLATED     | QTY |
| ⊗                          | 8.0   | PLATED     | 14  |
| ⊠                          | 12.0  | PLATED     | 242 |
| ⊙                          | 37.0  | PLATED     | 4   |
| ⊚                          | 40.0  | PLATED     | 6   |
| △                          | 41.0  | PLATED     | 15  |
| △                          | 91.0  | PLATED     | 2   |
| ⊗                          | 100.0 | PLATED     | 4   |
| ⊕                          | 125.0 | NON-PLATED | 4   |

- NOTES:
1. THIS BOARD IS RoHS COMPLIANT.
  2. PRINTED WIRING BOARD DESIGN AND ACCEPTANCE CRITERIA SHALL BE IAW WITH THE REQUIREMENTS OF IPC-D-275 AND IPC-A-600.
  3. MATERIAL: FR4 (RoHS COMPLIANT), 1 OZ COPPER.
  4. APPLY SOLDER MASK, BOTH SIDES OVER BARE COPPER IAW IPC-SM-840, CLASS 2 (LPI) (INTERSIL RED MASK).
  5. ALL PATTERNS ARE VIEWED FROM THE PRIMARY SIDE LOOKING THROUGH THE BOARD.
  6. UNLESS OTHERWISE SPECIFIED ALL HOLE DIAMETERS ARE AFTER PLATING.
  7. APPLY SILKSCREEN USING WHITE NON-CONDUCTIVE EPOXY BASED INK.
  8. PWB MUST BE 100% ELECTRICALLY TESTED FOR SHORTS AND CONTINUITY. USE NETLIST PROVIDED ISL78691EVALIZA\_IPC356.IPC IAW IPC-D-356.
  9. MARK DATE CODE AND MANUFACTURES IDENTIFICATION ON SOLDER SIDE PER IPC-6011 AND IPC-6012.
  10. TOLERANCE ON ALL DRILL HOLES SHALL BE IAW IPC-D-2221 & 2222 UNLESS OTHERWISE SPECIFIED.

FIGURE 11A. PCB AND DRILL SPECIFICATIONS

# Typical Performance Curves

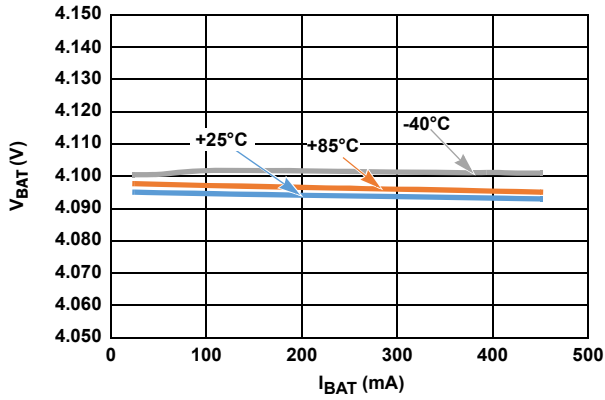


FIGURE 12. VOLTAGE REGULATION vs CHARGE CURRENT

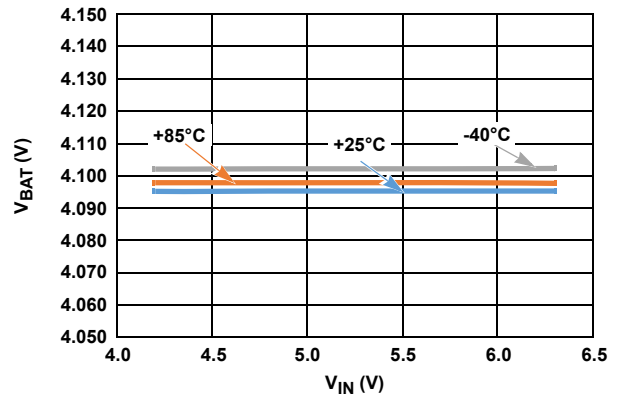


FIGURE 13. NO LOAD VOLTAGE vs TEMPERATURE

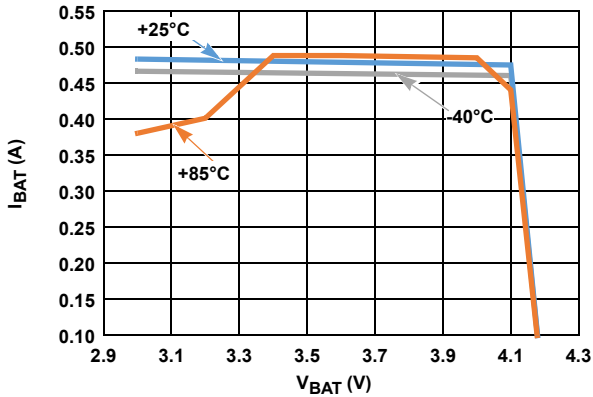


FIGURE 14. CHARGE CURRENT vs OUTPUT VOLTAGE,  $R_{IREF} = 158k$

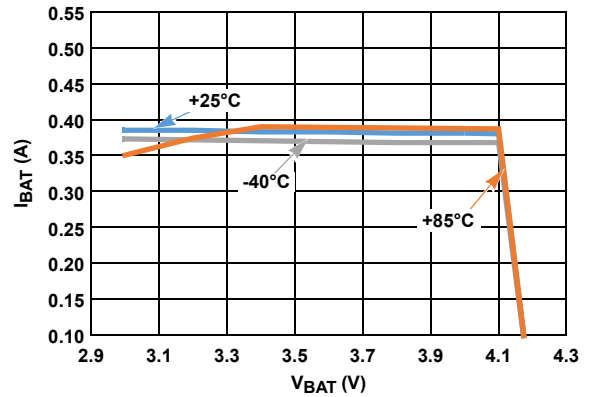


FIGURE 15. CHARGE CURRENT vs OUTPUT VOLTAGE,  $R_{IREF} = 200k$

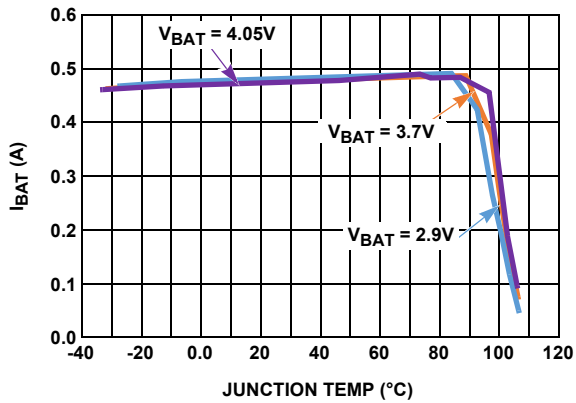


FIGURE 16. CHARGE CURRENT vs JUNCTION TEMPERATURE,  $R_{IREF} = 158k$

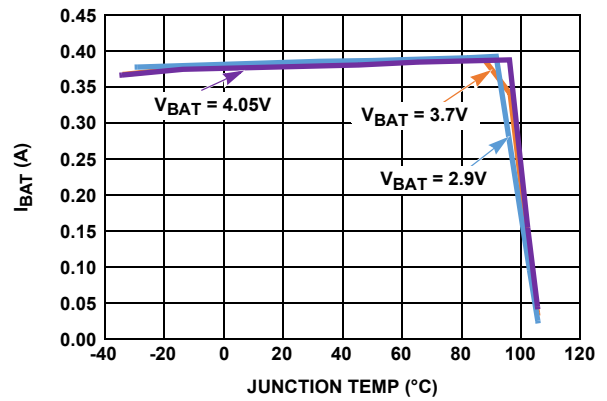


FIGURE 17. CHARGE CURRENT vs JUNCTION TEMPERATURE,  $R_{IREF} = 200k$

## Typical Performance Curves

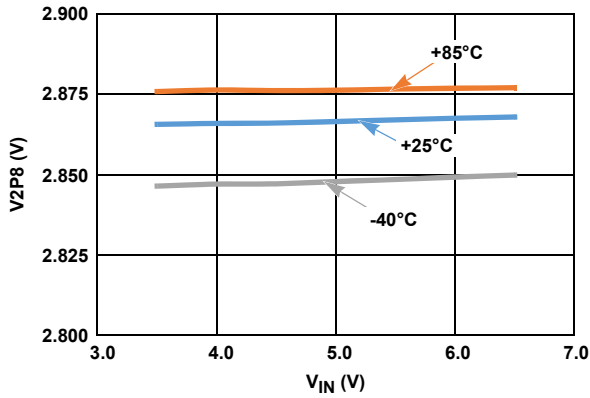


FIGURE 18. V2P8 OUTPUT vs INPUT VOLTAGE AT NO LOAD

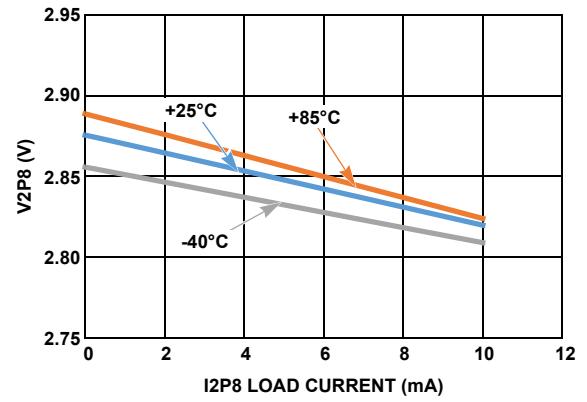


FIGURE 19. V2P8 OUTPUT vs LOAD CURRENT

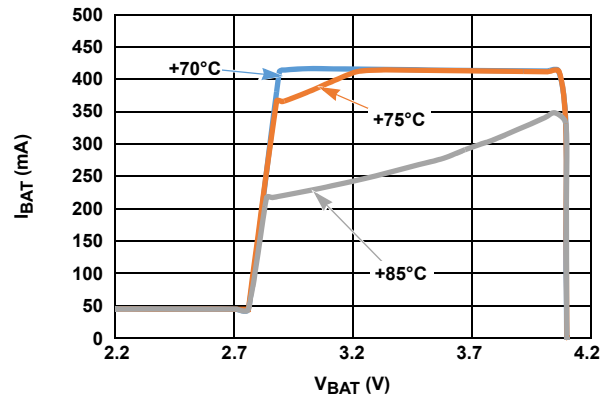


FIGURE 20. V<sub>BAT</sub> vs I<sub>BAT</sub> vs AMBIENT TEMPERATURE, R<sub>IREF</sub> = 200k, V<sub>IN</sub> = 5.5V, AIR FLOW = 0 LFM, MEASURED ON THE ISL78692EVAL1Z BOARD

## Notice

1. Descriptions of circuits, software and other related information in this document are provided only to illustrate the operation of semiconductor products and application examples. You are fully responsible for the incorporation or any other use of the circuits, software, and information in the design of your product or system. Renesas Electronics disclaims any and all liability for any losses and damages incurred by you or third parties arising from the use of these circuits, software, or information.
  2. Renesas Electronics hereby expressly disclaims any warranties against and liability for infringement or any other claims involving patents, copyrights, or other intellectual property rights of third parties, by or arising from the use of Renesas Electronics products or technical information described in this document, including but not limited to, the product data, drawings, charts, programs, algorithms, and application examples.
  3. No license, express, implied or otherwise, is granted hereby under any patents, copyrights or other intellectual property rights of Renesas Electronics or others.
  4. You shall not alter, modify, copy, or reverse engineer any Renesas Electronics product, whether in whole or in part. Renesas Electronics disclaims any and all liability for any losses or damages incurred by you or third parties arising from such alteration, modification, copying or reverse engineering.
  5. Renesas Electronics products are classified according to the following two quality grades: "Standard" and "High Quality". The intended applications for each Renesas Electronics product depends on the product's quality grade, as indicated below.  
"Standard": Computers; office equipment; communications equipment; test and measurement equipment; audio and visual equipment; home electronic appliances; machine tools; personal electronic equipment; industrial robots; etc.  
"High Quality": Transportation equipment (automobiles, trains, ships, etc.); traffic control (traffic lights); large-scale communication equipment; key financial terminal systems; safety control equipment; etc.  
Unless expressly designated as a high reliability product or a product for harsh environments in a Renesas Electronics data sheet or other Renesas Electronics document, Renesas Electronics products are not intended or authorized for use in products or systems that may pose a direct threat to human life or bodily injury (artificial life support devices or systems; surgical implantations; etc.), or may cause serious property damage (space system; undersea repeaters; nuclear power control systems; aircraft control systems; key plant systems; military equipment; etc.). Renesas Electronics disclaims any and all liability for any damages or losses incurred by you or any third parties arising from the use of any Renesas Electronics product that is inconsistent with any Renesas Electronics data sheet, user's manual or other Renesas Electronics document.
  6. When using Renesas Electronics products, refer to the latest product information (data sheets, user's manuals, application notes, "General Notes for Handling and Using Semiconductor Devices" in the reliability handbook, etc.), and ensure that usage conditions are within the ranges specified by Renesas Electronics with respect to maximum ratings, operating power supply voltage range, heat dissipation characteristics, installation, etc. Renesas Electronics disclaims any and all liability for any malfunctions, failure or accident arising out of the use of Renesas Electronics products outside of such specified ranges.
  7. Although Renesas Electronics endeavors to improve the quality and reliability of Renesas Electronics products, semiconductor products have specific characteristics, such as the occurrence of failure at a certain rate and malfunctions under certain use conditions. Unless designated as a high reliability product or a product for harsh environments in a Renesas Electronics data sheet or other Renesas Electronics document, Renesas Electronics products are not subject to radiation resistance design. You are responsible for implementing safety measures to guard against the possibility of bodily injury, injury or damage caused by fire, and/or danger to the public in the event of a failure or malfunction of Renesas Electronics products, such as safety design for hardware and software, including but not limited to redundancy, fire control and malfunction prevention, appropriate treatment for aging degradation or any other appropriate measures. Because the evaluation of microcomputer software alone is very difficult and impractical, you are responsible for evaluating the safety of the final products or systems manufactured by you.
  8. Please contact a Renesas Electronics sales office for details as to environmental matters such as the environmental compatibility of each Renesas Electronics product. You are responsible for carefully and sufficiently investigating applicable laws and regulations that regulate the inclusion or use of controlled substances, including without limitation, the EU RoHS Directive, and using Renesas Electronics products in compliance with all these applicable laws and regulations. Renesas Electronics disclaims any and all liability for damages or losses occurring as a result of your noncompliance with applicable laws and regulations.
  9. Renesas Electronics products and technologies shall not be used for or incorporated into any products or systems whose manufacture, use, or sale is prohibited under any applicable domestic or foreign laws or regulations. You shall comply with any applicable export control laws and regulations promulgated and administered by the governments of any countries asserting jurisdiction over the parties or transactions.
  10. It is the responsibility of the buyer or distributor of Renesas Electronics products, or any other party who distributes, disposes of, or otherwise sells or transfers the product to a third party, to notify such third party in advance of the contents and conditions set forth in this document.
  11. This document shall not be reprinted, reproduced or duplicated in any form, in whole or in part, without prior written consent of Renesas Electronics.
  12. Please contact a Renesas Electronics sales office if you have any questions regarding the information contained in this document or Renesas Electronics products.
- (Note 1) "Renesas Electronics" as used in this document means Renesas Electronics Corporation and also includes its directly or indirectly controlled subsidiaries.  
(Note 2) "Renesas Electronics product(s)" means any product developed or manufactured by or for Renesas Electronics.

(Rev.4.0-1 November 2017)



### SALES OFFICES

Renesas Electronics Corporation

<http://www.renesas.com>

Refer to "<http://www.renesas.com/>" for the latest and detailed information.

**Renesas Electronics America Inc.**  
1001 Murphy Ranch Road, Milpitas, CA 95035, U.S.A.  
Tel: +1-408-432-8888, Fax: +1-408-434-5351

**Renesas Electronics Canada Limited**  
9251 Yonge Street, Suite 8309 Richmond Hill, Ontario Canada L4C 9T3  
Tel: +1-905-237-2004

**Renesas Electronics Europe Limited**  
Dukes Meadow, Millboard Road, Bourne End, Buckinghamshire, SL8 5FH, U.K  
Tel: +44-1628-651-700, Fax: +44-1628-651-804

**Renesas Electronics Europe GmbH**  
Arcadiastrasse 10, 40472 Düsseldorf, Germany  
Tel: +49-211-6503-0, Fax: +49-211-6503-1327

**Renesas Electronics (China) Co., Ltd.**  
Room 1709 Quantum Plaza, No.27 ZhichunLu, Haidian District, Beijing, 100191 P. R. China  
Tel: +86-10-8235-1155, Fax: +86-10-8235-7679

**Renesas Electronics (Shanghai) Co., Ltd.**  
Unit 301, Tower A, Central Towers, 555 Langao Road, Putuo District, Shanghai, 200333 P. R. China  
Tel: +86-21-2226-0888, Fax: +86-21-2226-0999

**Renesas Electronics Hong Kong Limited**  
Unit 1601-1611, 16/F., Tower 2, Grand Century Place, 193 Prince Edward Road West, Mongkok, Kowloon, Hong Kong  
Tel: +852-2265-6688, Fax: +852-2886-9022

**Renesas Electronics Taiwan Co., Ltd.**  
13F, No. 363, Fu Shing North Road, Taipei 10543, Taiwan  
Tel: +886-2-8175-9600, Fax: +886-2-8175-9670

**Renesas Electronics Singapore Pte. Ltd.**  
80 Bendemeer Road, Unit #06-02 Hyflux Innovation Centre, Singapore 339949  
Tel: +65-6213-0200, Fax: +65-6213-0300

**Renesas Electronics Malaysia Sdn.Bhd.**  
Unit 1207, Block B, Menara Amcorp, Amcorp Trade Centre, No. 18, Jln Persiaran Barat, 46050 Petaling Jaya, Selangor Darul Ehsan, Malaysia  
Tel: +60-3-7955-9390, Fax: +60-3-7955-9510

**Renesas Electronics India Pvt. Ltd.**  
No.777C, 100 Feet Road, HAL 2nd Stage, Indiranagar, Bangalore 560 038, India  
Tel: +91-80-67208700, Fax: +91-80-67208777

**Renesas Electronics Korea Co., Ltd.**  
17F, KAMCO Yangjae Tower, 262, Gangnam-daero, Gangnam-gu, Seoul, 06265 Korea  
Tel: +82-2-558-3737, Fax: +82-2-558-5338

# Mouser Electronics

Authorized Distributor

Click to View Pricing, Inventory, Delivery & Lifecycle Information:

[Renesas Electronics:](#)

[ISL78692EVAL1Z](#)