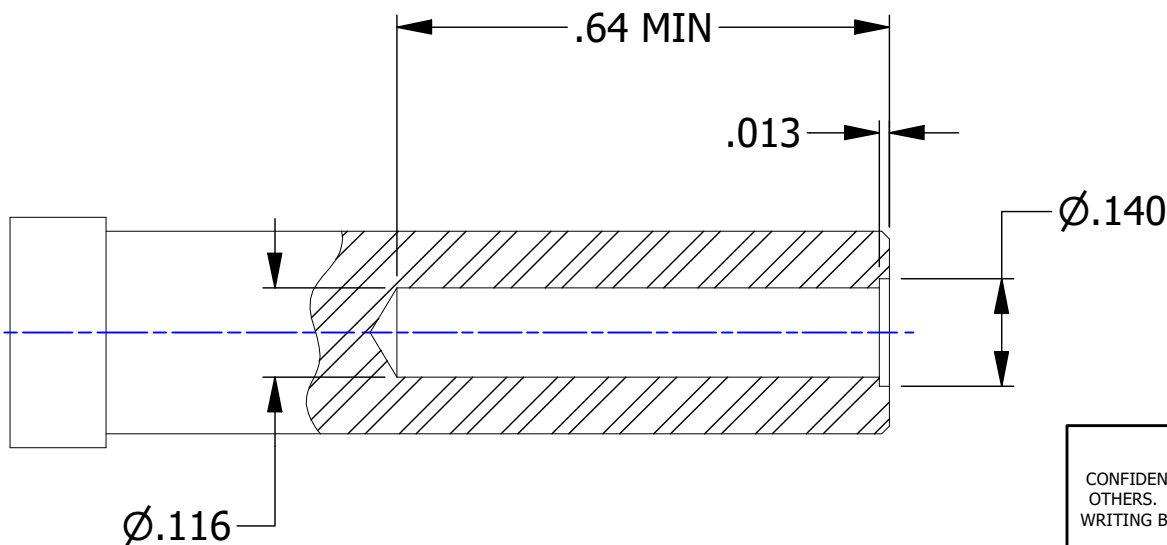
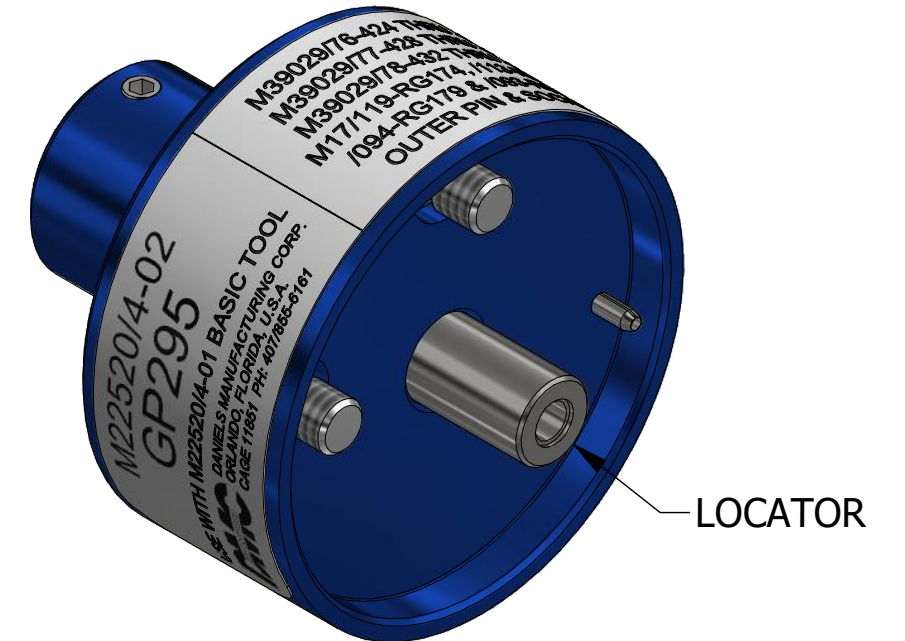
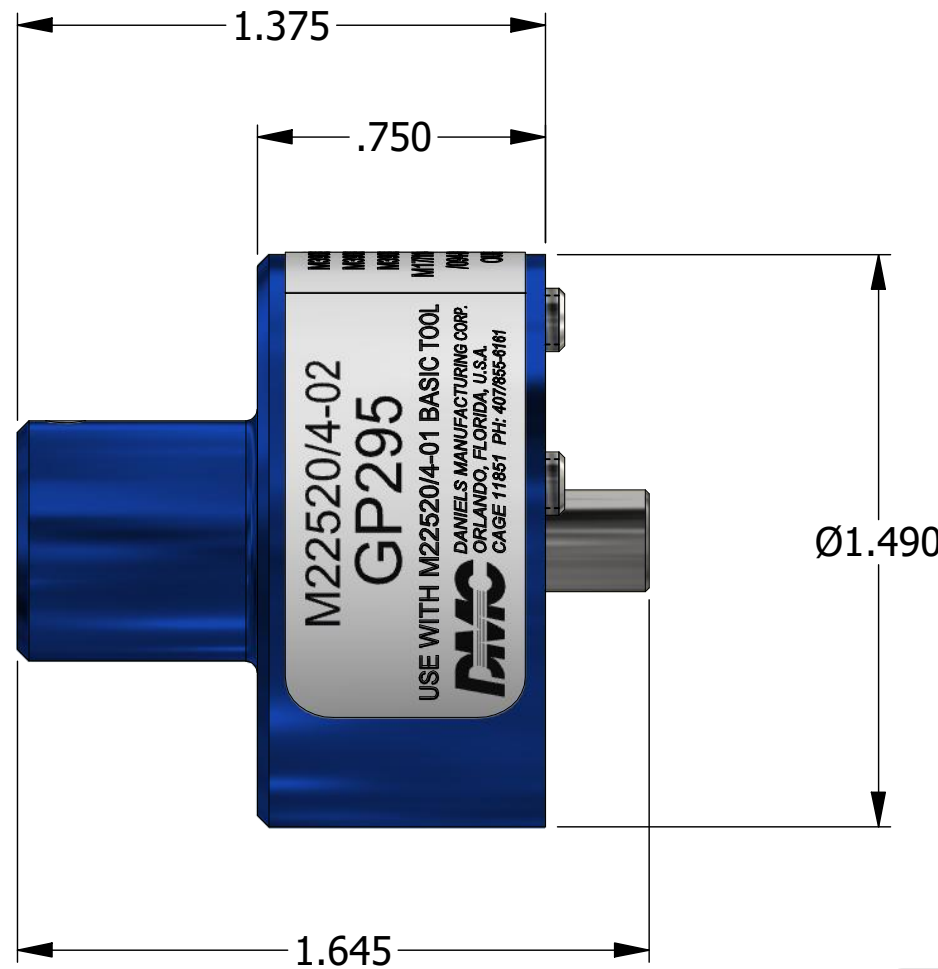


**UNCONTROLLED DOCUMENT
WILL NOT BE UPDATED**

DIMENSIONS IN INCHES - UNLESS OTHERWISE SPECIFIED

REVISIONS

REV	ECO NO.	DESCRIPTION	BY	DATE	APP'D BY	DATE
1		ORIGINAL RELEASE	AAM	9/14/2001	RRR	9/14/2001
2	25000	DATAPLATE UPDATED	TonyD	11/20/2020		



**M22520/4-02
GP295**

USE WITH M22520/4-01 BASIC TOOL

DMC DANIELS MANUFACTURING CORP.
ORLANDO, FLORIDA, U.S.A.
CAGE 11851 PH: 407/855-6161

M39029/76-424 THRU -427
M39029/77-428 THRU -431
M39029/78-432 THRU -435
M17/119-RG174, /113-RG316,
/094-RG179 & /093-RG178
OUTER PIN & SOCKET

DATAPLATE

MATERIAL	ITEM	PART NO.	QTY.	DESCRIPTION / REMARKS
N/A	DRN. A. MOO-YOUNG CHK'D.	DATE 9/14/2001 DATE		DMC DANIELS MANUFACTURING CORP. ORLANDO, FLORIDA CAGE 11851
RESTRICTED & CONFIDENTIAL CONFIDENTIAL PROPERTY OF DANIELS MANUFACTURING CORP. NOT TO BE DISCLOSED TO OTHERS. REPRODUCTION OR USED FOR ANY OTHER PURPOSE EXCEPT AS AUTHORIZED IN WRITING BY DANIELS MANUFACTURING. MUST BE RETURNED TO DANIELS MANUFACTURING CORP. ON COMPLETION OF ORDER OR PURPOSES FOR WHICH LENT.	HEAT TREAT	N/A		NOTE: THIS DRAWING IS AN OUTLINE DRAWING OF THE RESPECTIVE DMC PART NUMBER INDICATED. ACTUAL DMC PART NUMBER IS CAD PART NUMBER WITHOUT THE "-ENV" SUFFIX
CREATED FROM AN INVENTOR MODEL. CHANGES MUST BE REFLECTED IN THE 3D PART	FINISH	N/A		TITLE SINGLE POSITION HEAD (M22520/4-02) ENVELOPE DRAWING WHERE USED: GS100-1 & GS100
DO NOT SCALE DRAWING			SIZE B	SCALE 2 : 1
			CAD P/N GP295-ENV	SHEET 1 OF 1
			DWG. NO. GP295	REV. 2

Mouser Electronics

Authorized Distributor

Click to View Pricing, Inventory, Delivery & Lifecycle Information:

[Daniels Manufacturing:](#)

[GP295](#)