

2N5883 2N5884 PNP  
2N5885 2N5886 NPN

**COMPLEMENTARY SILICON  
POWER TRANSISTORS**



**TO-3 CASE**



www.centrasemi.com

**DESCRIPTION:**

The CENTRAL SEMICONDUCTOR 2N5883, 2N5885 series types are complementary silicon epitaxial base transistors designed for power amplifier and switching applications.

**MARKING: FULL PART NUMBER**

**MAXIMUM RATINGS:** ( $T_C=25^\circ\text{C}$ )

Collector-Base Voltage  
Collector-Emitter Voltage  
Emitter-Base Voltage  
Continuous Collector Current  
Peak Collector Current  
Continuous Base Current  
Power Dissipation  
Operating and Storage Junction Temperature  
Thermal Resistance

SYMBOL	2N5883	2N5884	UNITS
	2N5885	2N5886	
$V_{CBO}$	60	80	V
$V_{CEO}$	60	80	V
$V_{EBO}$		5.0	V
$I_C$		25	A
$I_{CM}$		50	A
$I_B$		7.5	A
$P_D$		200	W
$T_J, T_{stg}$		-65 to +200	$^\circ\text{C}$
$\theta_{JC}$		0.875	$^\circ\text{C/W}$

**ELECTRICAL CHARACTERISTICS:** ( $T_C=25^\circ\text{C}$  unless otherwise noted)

SYMBOL	TEST CONDITIONS	MIN	MAX	UNITS
$I_{CBO}$	$V_{CB}=\text{Rated } V_{CBO}$		1.0	mA
$I_{CEO}$	$V_{CE}=\frac{1}{2}\text{Rated } V_{CEO}$		2.0	mA
$I_{CEX}$	$V_{CE}=\text{Rated } V_{CEO}, V_{BE}=1.5\text{V}$		1.0	mA
$I_{CEX}$	$V_{CE}=\text{Rated } V_{CEO}, V_{BE}=1.5\text{V}, T_C=150^\circ\text{C}$		10	mA
$I_{EBO}$	$V_{EB}=5.0\text{V}$		1.0	mA
$BV_{CEO}$	$I_C=200\text{mA}$ (2N5883, 2N5885)	60		V
$BV_{CEO}$	$I_C=200\text{mA}$ (2N5884, 2N5886)	80		V
$V_{CE(SAT)}$	$I_C=15\text{A}, I_B=1.5\text{A}$		1.0	V
$V_{CE(SAT)}$	$I_C=25\text{A}, I_B=6.25\text{A}$		4.0	V
$V_{BE(SAT)}$	$I_C=25\text{A}, I_B=6.25\text{A}$		2.5	V
$V_{BE(ON)}$	$V_{CE}=4.0\text{V}, I_C=10\text{A}$		1.5	V
$h_{FE}$	$V_{CE}=4.0\text{V}, I_C=3.0\text{A}$	35		
$h_{FE}$	$V_{CE}=4.0\text{V}, I_C=10\text{A}$	20	100	
$h_{FE}$	$V_{CE}=4.0\text{V}, I_C=25\text{A}$	4.0		
$f_T$	$V_{CE}=10\text{V}, I_C=1.0\text{A}, f=1.0\text{MHz}$	4.0		MHz
$C_{ob}$	$V_{CB}=10\text{V}, I_E=0, f=1.0\text{MHz}$ (2N5883, 2N5885)		1000	pF
$C_{ob}$	$V_{CB}=10\text{V}, I_E=0, f=1.0\text{MHz}$ (2N5884, 2N5886)		500	pF
$h_{fe}$	$V_{CE}=4.0\text{V}, I_C=3.0\text{A}, f=1.0\text{kHz}$	20		
$t_r$	$V_{CC}=30\text{V}, I_C=10\text{A}, I_{B1}=I_{B2}=1.0\text{A}$		0.7	$\mu\text{s}$
$t_s$	$V_{CC}=30\text{V}, I_C=10\text{A}, I_{B1}=I_{B2}=1.0\text{A}$		1.0	$\mu\text{s}$
$t_f$	$V_{CC}=30\text{V}, I_C=10\text{A}, I_{B1}=I_{B2}=1.0\text{A}$		0.8	$\mu\text{s}$

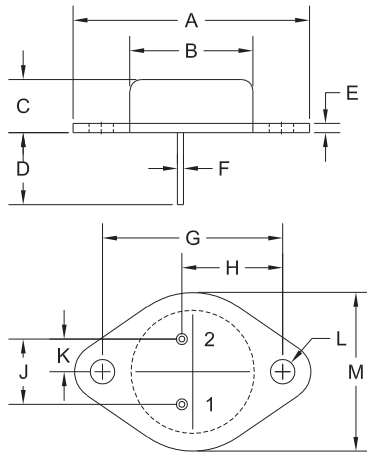
R1 (4-December 2012)

2N5883 2N5884 PNP  
 2N5885 2N5886 NPN

COMPLEMENTARY SILICON  
 POWER TRANSISTORS



TO-3 CASE - MECHANICAL OUTLINE



DIMENSIONS				
SYMBOL	INCHES		MILLIMETERS	
	MIN	MAX	MIN	MAX
A	1.516	1.573	38.50	39.96
B (DIA)	0.748	0.875	19.00	22.23
C	0.250	0.450	6.35	11.43
D	0.433	0.516	11.00	13.10
E	0.054	0.065	1.38	1.65
F	0.035	0.045	0.90	1.15
G	1.177	1.197	29.90	30.40
H	0.650	0.681	16.50	17.30
J	0.420	0.440	10.67	11.18
K	0.205	0.225	5.21	5.72
L (DIA)	0.151	0.172	3.84	4.36
M	0.984	1.050	25.00	26.67

TO-3 (REV: R2)

R2

**LEAD CODE:**

- 1) Base
- 2) Emitter
- Case) Collector

**MARKING:**

**FULL PART NUMBER**

R1 (4-December 2012)

## OUTSTANDING SUPPORT AND SUPERIOR SERVICES



---

### PRODUCT SUPPORT

Central's operations team provides the highest level of support to insure product is delivered on-time.

- Supply management (Customer portals)
- Inventory bonding
- Consolidated shipping options
- Custom bar coding for shipments
- Custom product packing

---

### DESIGNER SUPPORT/SERVICES

Central's applications engineering team is ready to discuss your design challenges. Just ask.

- Free quick ship samples (2<sup>nd</sup> day air)
- Online technical data and parametric search
- SPICE models
- Custom electrical curves
- Environmental regulation compliance
- Customer specific screening
- Up-screening capabilities
- Special wafer diffusions
- PbSn plating options
- Package details
- Application notes
- Application and design sample kits
- Custom product and package development

---

### REQUESTING PRODUCT PLATING

1. If requesting Tin/Lead plated devices, add the suffix " TIN/LEAD" to the part number when ordering (example: 2N2222A TIN/LEAD).
2. If requesting Lead (Pb) Free plated devices, add the suffix " PBFREE" to the part number when ordering (example: 2N2222A PBFREE).

---

### CONTACT US

#### Corporate Headquarters & Customer Support Team

Central Semiconductor Corp.  
145 Adams Avenue  
Hauppauge, NY 11788 USA  
Main Tel: (631) 435-1110  
Main Fax: (631) 435-1824  
Support Team Fax: (631) 435-3388  
[www.centrasemi.com](http://www.centrasemi.com)

**Worldwide Field Representatives:**  
[www.centrasemi.com/wwreps](http://www.centrasemi.com/wwreps)

**Worldwide Distributors:**  
[www.centrasemi.com/wwdistributors](http://www.centrasemi.com/wwdistributors)

---

For the latest version of Central Semiconductor's **LIMITATIONS AND DAMAGES DISCLAIMER**, which is part of Central's Standard Terms and Conditions of sale, visit: [www.centrasemi.com/terms](http://www.centrasemi.com/terms)

# Mouser Electronics

Authorized Distributor

Click to View Pricing, Inventory, Delivery & Lifecycle Information:

[Central Semiconductor:](#)

[2N5885 TIN/LEAD](#) [2N5884 TIN/LEAD](#)