

Specification Sheet

Part Number: SCMMINSERT-FW

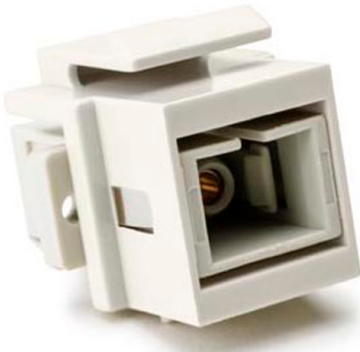
All single mode, single mode angled and multimode 10 Gb inserts feature durable zirconia ceramic ferrules, which allow for frequent, repeated insertion.

All standard multimode inserts feature phosphor bronze ferrules, which provide an affordable insert option.

Color coded for easy fiber selection.

Meet ANSI/TIA/EIA 568-C standards.

Meet ANSI/TIA/EIA 604 (FOCIS) connector interface requirements.



SC Multimode Fiber Insert, Beige, Office White, 1/pkg

Article Number	904-00749
Type	SCMMINSERT-FW
Color	Office White (OEWH) Beige (BGE)
Quantity Per	box
Product Description	Fiber inserts provide the final connection when using fiber as a digital loop carrier, or fiber-to-the-x solution. HellermannTyton offers a variety of fiber inserts with industry standard LC, SC, ST and MTRJ connections that can be used with HellermannTyton standard flush wall plates.

Short Description	SC Multimode Fiber Insert, Beige, Office White, 1/pkg
Global Part Name	SCMMINSERT-FW-PL-BGE/WH
Technical Description	SC Multimode Fiber Insert, Beige, Office White
Material	Plastic (PL)
Material Shortcut	PL
Package Quantity (Imperial)	1
Package Quantity (Metric)	1
Customs Number	8536700000

Mouser Electronics

Authorized Distributor

Click to View Pricing, Inventory, Delivery & Lifecycle Information:

[HellermannTyton:](#)

[SCMMINSERT-FW](#)