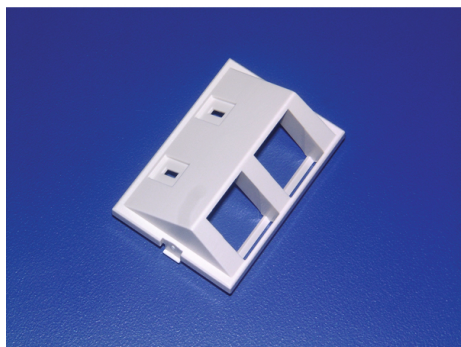


Specification Sheet

Part Number: FPMIAD15-FW



Faceplate inserts can be loaded and unloaded from the front
Single gang faceplate will accept 3U of inserts

Dual gang faceplate will accept 6U of inserts

Modular Faceplate Angled Dual Insert With Icons, ABS, Office White, 2/pkg

Article Number 854-35364

Type FPMIAD15

Color Office White (OEWH)

Quantity Per bag

Product Description HellermannTyton's line of modular faceplates provides a great amount of flexibility. Offered in single gang or dual gang styles, these faceplates can be used with flush or angled modules. Up to four angled ports can be installed in a single gang faceplate, providing an efficient solution for high capacity applications.

Short Description Modular Faceplate Angled Dual Insert With Icons, ABS, Office White, 2/pkg

Global Part Name	FPMIAD15
Technical Description	Modular Faceplate Angled Dual Insert With Icons, Office White
Variant	Modular
Material	Acrylonitrile Butadiene Styrene (ABS)
Material Shortcut	ABS
UL Listed (US and Canada)	Yes
UL Listed (US)	Yes
Package Quantity (Imperial)	2
Package Quantity (Metric)	2
Customs Number	3925900000

Mouser Electronics

Authorized Distributor

Click to View Pricing, Inventory, Delivery & Lifecycle Information:

[HellermannTyton:](#)

[FPMIAD15-FW](#)